



10851 Towerbridge Road
 Littleton, CO 80130
 COMMUNITY: Highlands Ranch

MLS # 5176457
 PRICE \$579,000



Single Family



2592 SQFT



3 Beds



3/1 Baths



2 Car



0.09 Acre

PROPERTY DETAILS

THIS EXCEPTIONAL 2 STORY HOME IS IN THE HEARTH AND MISSING NOTHING! IT HAS A VERY OPEN AND FUNCTIONAL FLOOR PLAN. ON THE MAIN LEVEL THERES THE LIVING ROOM A DEN/MUSIC/OFFICE ROOM ALONG WITH THE KITCHEN AND DINING ROOM/SPACE WITH FIREPLACE AND A SLIDER TO THE LARGE BACK DECK. UPSTAIRS THERES THE MASTER BEDROOM COMPLETE WITH A 5 PIECE MASTER BATH AND LARGE WALK IN CLOSET. ALSO UPSTAIRS IS THE TWO LARGE BEDROOMS A FULL BATH AND A COMPUTER NOOK. THE BASEMENT IS PARTIALLY FINISHED WITH A MEDIA ROOM, BAR, LAUNDRY ROOM AND A HALF BATH. THERES LOTS OF WINDOWS AROUND THIS HOME THAT ALLOWS FOR GREAT NATURAL LIGHT. THE LOCATION PROVIDES GREAT ACCESS TO THE REC CENTER, SCHOOLS AND HAS EASY ACCESS TO SHOPPING, DINING AND PARK MEADOWS. DONT MISS OUT!



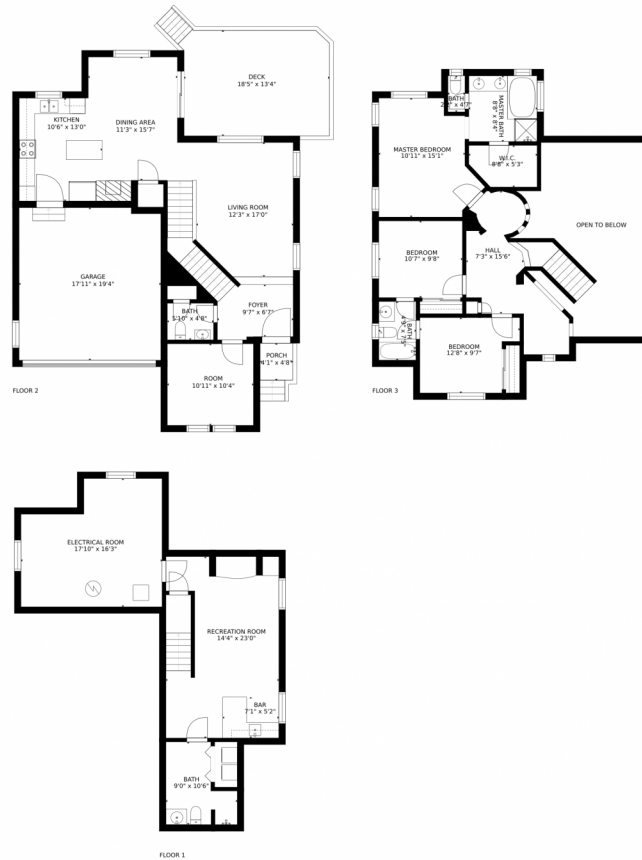
Ted Peterson Care Real Estate
 303-668-5533
 ted@tedarla.com



Scan code
 for more
 property
 details



10851 Towerbridge Road, Littleton, CO 80130 – All Levels



GROSS INTERNAL AREA
FLOOR 1: 684 sq. ft. FLOOR 2: 827 sq. ft
FLOOR 3: 804 sq. ft. EXCLUDED AREAS:
DECK: 245 sq. ft. PORCH: 19 sq. ft
GARAGE: 346 sq. ft
TOTAL: 2316 sq. ft
SIZES AND DIMENSIONS ARE APPROXIMATE, ACTUAL MAY VARY.

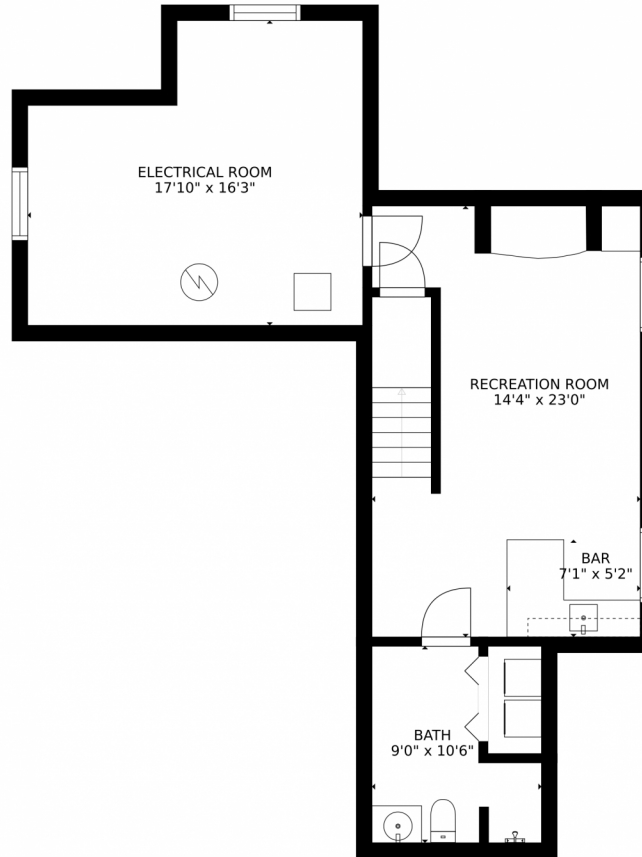
Disclaimer: Sizes and Dimensions are Approximate, Actual May Vary.



Ted Peterson Care Real Estate
303-668-5533
ted@tedarla.com



10851 Towerbridge Road, Littleton, CO 80130 – Lower Level



GROSS INTERNAL AREA
FLOOR 1: 684 sq. ft. FLOOR 2: 827 sq. ft.
FLOOR 3: 804 sq. ft. EXCLUDED AREAS:
DECK: 245 sq. ft. PORCH: 19 sq. ft.
GARAGE: 346 sq. ft.
TOTAL: 2316 sq. ft.
SIZES AND DIMENSIONS ARE APPROXIMATE, ACTUAL MAY VARY.

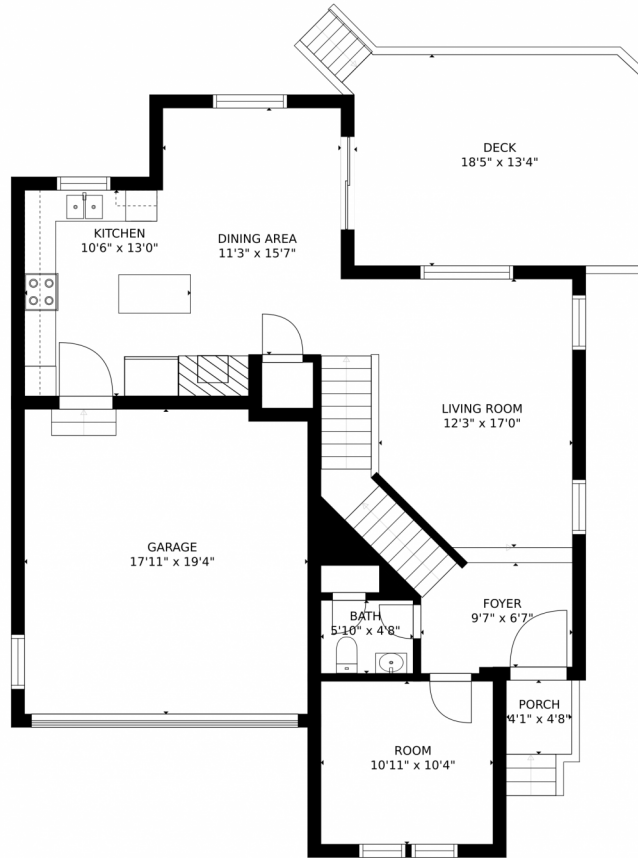
Disclaimer: Sizes and Dimensions are Approximate, Actual May Vary.



Ted Peterson Care Real Estate
303-668-5533
ted@tedarla.com



10851 Towerbridge Road, Littleton, CO 80130 – Main Level



GROSS INTERNAL AREA
FLOOR 1: 684 sq. ft. FLOOR 2: 827 sq. ft.
FLOOR 3: 804 sq. ft. EXCLUDED AREAS:
DECK: 245 sq. ft. PORCH: 19 sq. ft.
GARAGE: 346 sq. ft.
TOTAL: 2316 sq. ft.
SIZES AND DIMENSIONS ARE APPROXIMATE, ACTUAL MAY VARY.

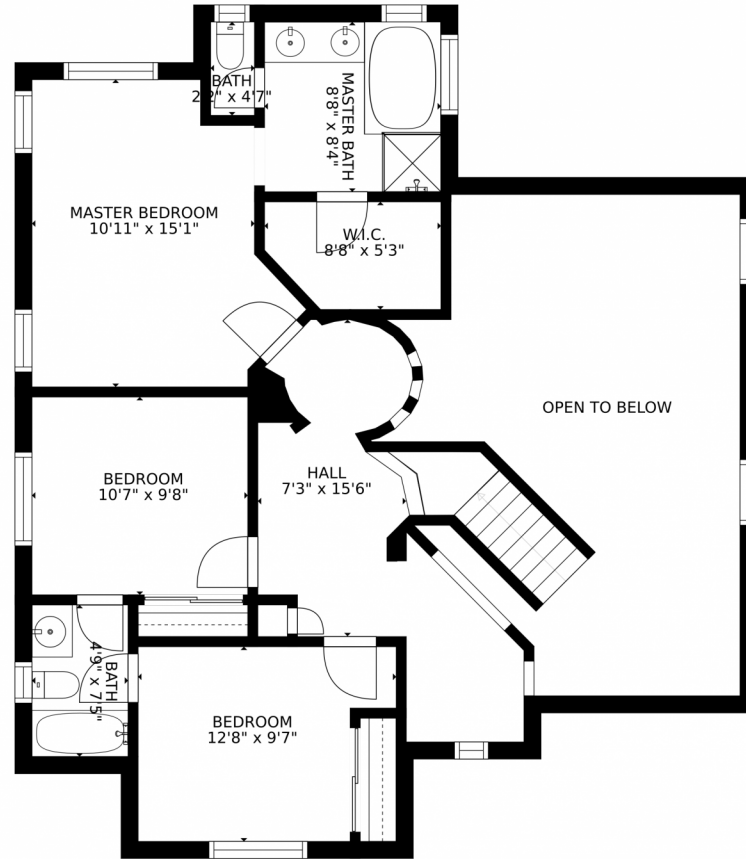
Disclaimer: Sizes and Dimensions are Approximate, Actual May Vary.



Ted Peterson Care Real Estate
303-668-5533
ted@tedarla.com



10851 Towerbridge Road, Littleton, CO 80130 – 2nd Level



GROSS INTERNAL AREA
FLOOR 1: 684 sq. ft. FLOOR 2: 827 sq. ft.
FLOOR 3: 804 sq. ft. EXCLUDED AREAS:
DECK: 245 sq. ft. PORCH: 19 sq. ft.
GARAGE: 346 sq. ft.
TOTAL: 2316 sq. ft.
SIZES AND DIMENSIONS ARE APPROXIMATE, ACTUAL MAY VARY.

Disclaimer: Sizes and Dimensions are Approximate, Actual May Vary.



Ted Peterson Care Real Estate
303-668-5533
ted@tedarla.com

