



Single Family



4570 SQFT



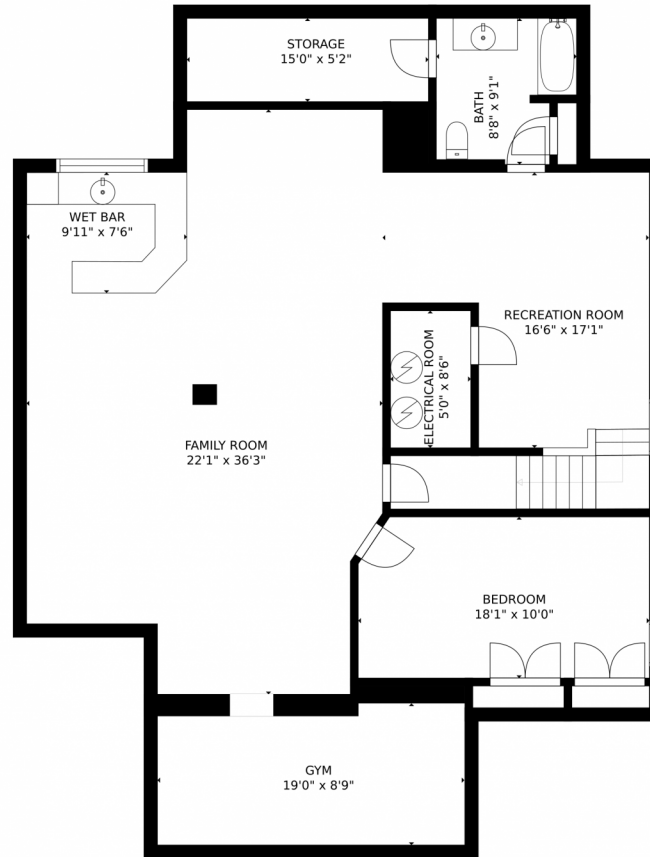
Anne Kremer
303-229-2034
anne@newagere.com



Scan code
for more
property
details



1575 South Jackson Street, Denver, CO 80210 – Lower Level



GROSS INTERNAL AREA
FLOOR 1: 1632 sq. ft. FLOOR 2: 1296 sq. ft.
FLOOR 3: 1287 sq. ft. EXCLUDED AREAS:
PATIO: 205 sq. ft. PORCH: 294 sq. ft.
GARAGE: 499 sq. ft.
TOTAL: 4215 sq. ft.
SIZES AND DIMENSIONS ARE APPROXIMATE, ACTUAL MAY VARY.

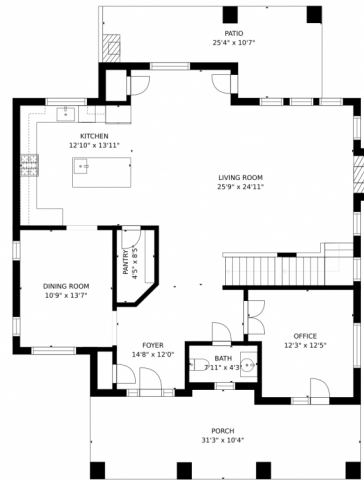
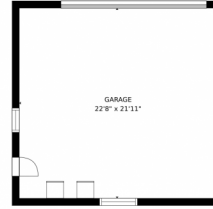
Disclaimer: Sizes and Dimensions are Approximate, Actual May Vary.



Anne Kremer
303-229-2034
anne@newagere.com



1575 South Jackson Street, Denver, CO 80210 – Main Floor



GROSS INTERNAL AREA
FLOOR 1: 1632 sq. ft, FLOOR 2: 1296 sq. ft
FLOOR 3: 1287 sq. ft, EXCLUDED AREAS:
PATIO: 205 sq. ft, PORCH: 294 sq. ft
GARAGE: 499 sq. ft
TOTAL: 4215 sq. ft
SIZES AND DIMENSIONS ARE APPROXIMATE, ACTUAL MAY VARY.

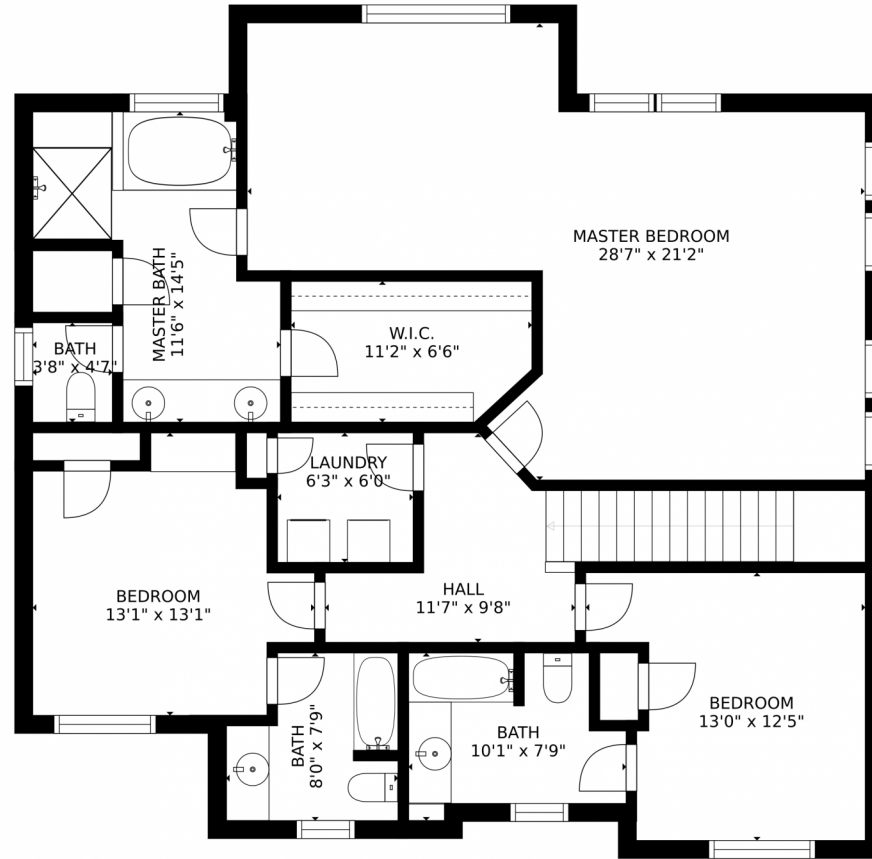
Disclaimer: Sizes and Dimensions are Approximate, Actual May Vary.



Anne Kremer
303-229-2034
anne@newagere.com



1575 South Jackson Street, Denver, CO 80210 – 2nd Floor



GROSS INTERNAL AREA
FLOOR 1: 1632 sq. ft. FLOOR 2: 1296 sq. ft.
FLOOR 3: 1287 sq. ft. EXCLUDED AREAS:
PATIO: 205 sq. ft. PORCH: 294 sq. ft.
GARAGE: 499 sq. ft.
TOTAL: 4215 sq. ft.
SIZES AND DIMENSIONS ARE APPROXIMATE, ACTUAL MAY VARY.

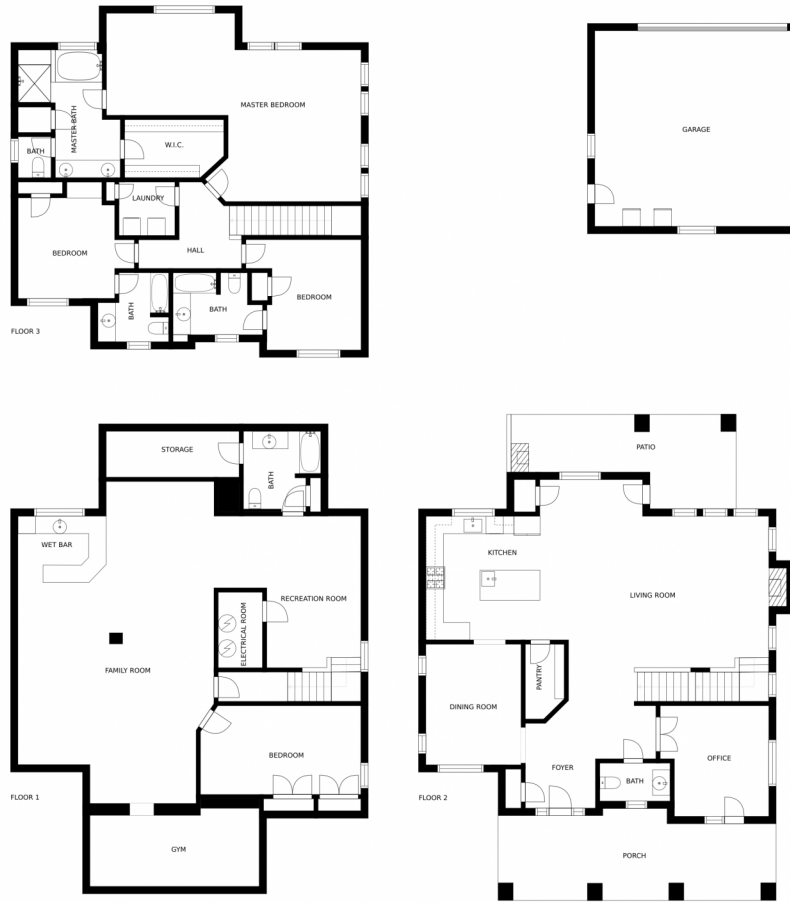
Disclaimer: Sizes and Dimensions are Approximate, Actual May Vary.



Anne Kremer
303-229-2034
anne@newagere.com



1575 South Jackson Street, Denver, CO 80210 – All Floors



SIZES AND DIMENSIONS ARE APPROXIMATE, ACTUAL MAY VARY.

Disclaimer: Sizes and Dimensions are Approximate, Actual May Vary.



Anne Kremer
303-229-2034
anne@newagere.com



Scan code
for more
property
details