



13591 Jita Lane
 Pine, CO 80470
 COMMUNITY: Pine Junction

MLS # 6595597
 PRICE
 \$2,500,000



Single Family



6500 SQFT



9 Beds



7/1 Baths



2 Car



0 Acre



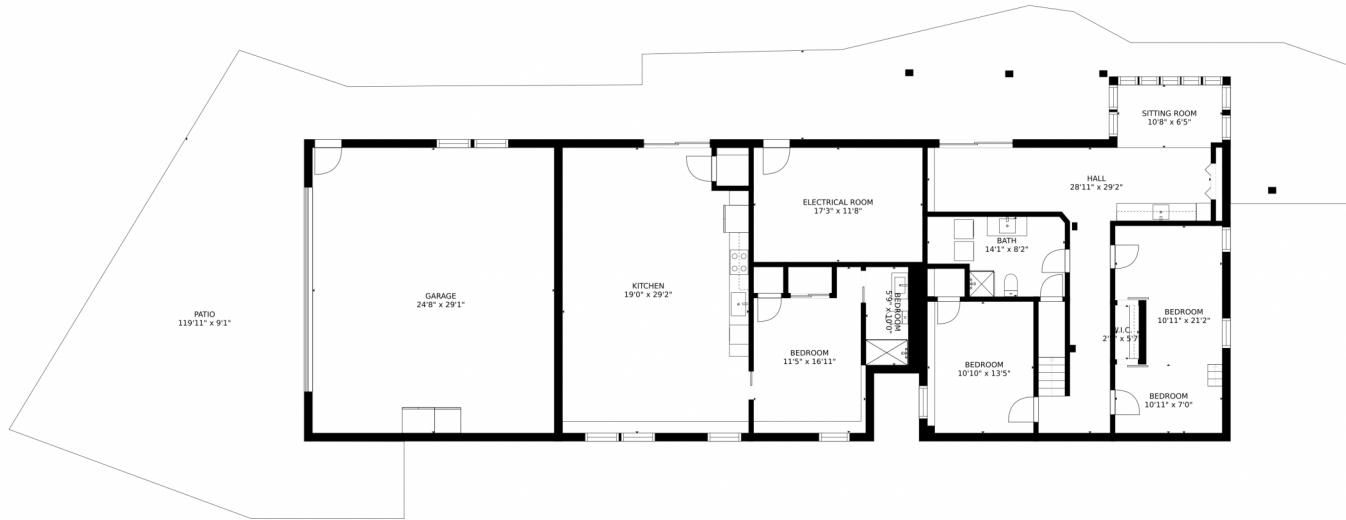
Matthew Lutz
 720-448-3822
 matthew.f.lutz@gmail.com



Scan code
 for more
 property
 details



13591 Jita Lane, Pine, CO 80470 – Lower Level



GROSS INTERNAL AREA
FLOOR 1: 1986 sq. ft. FLOOR 2: 2394 sq. ft.
FLOOR 3: 1416 sq. ft. EXCLUDED AREAS:
PATIO: 1896 sq. ft. GARAGE: 719 sq. ft.
BALCONY: 204 sq. ft. DECK: 348 sq. ft.
PORCH: 578 sq. ft.
TOTAL: 5797 sq. ft.
SIZES AND DIMENSIONS ARE APPROXIMATE, ACTUAL MAY VARY.

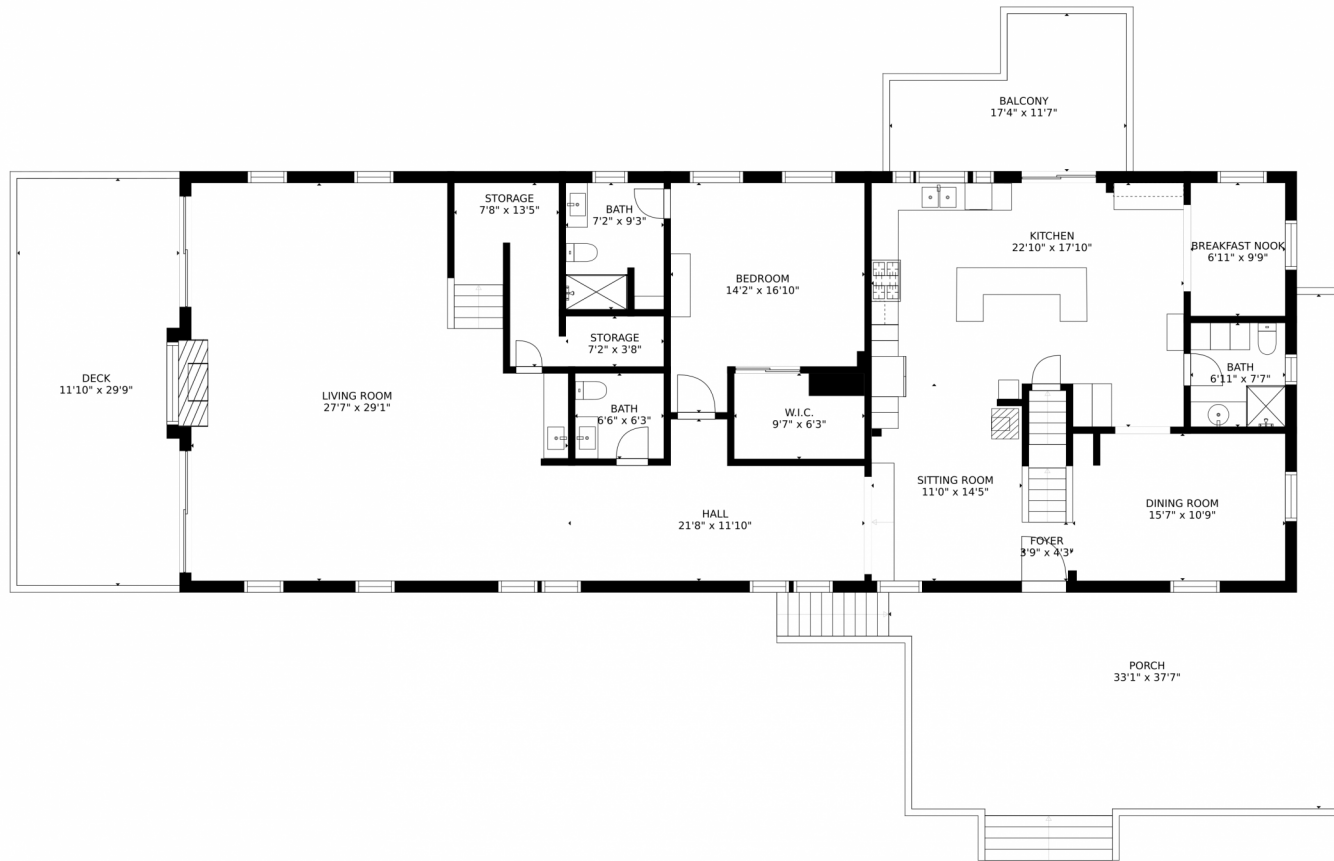
Disclaimer: Sizes and Dimensions are Approximate, Actual May Vary.



Matthew Lutz
720-448-3822
matthew.f.lutz@gmail.com



13591 Jita Lane, Pine, CO 80470 – Main Level



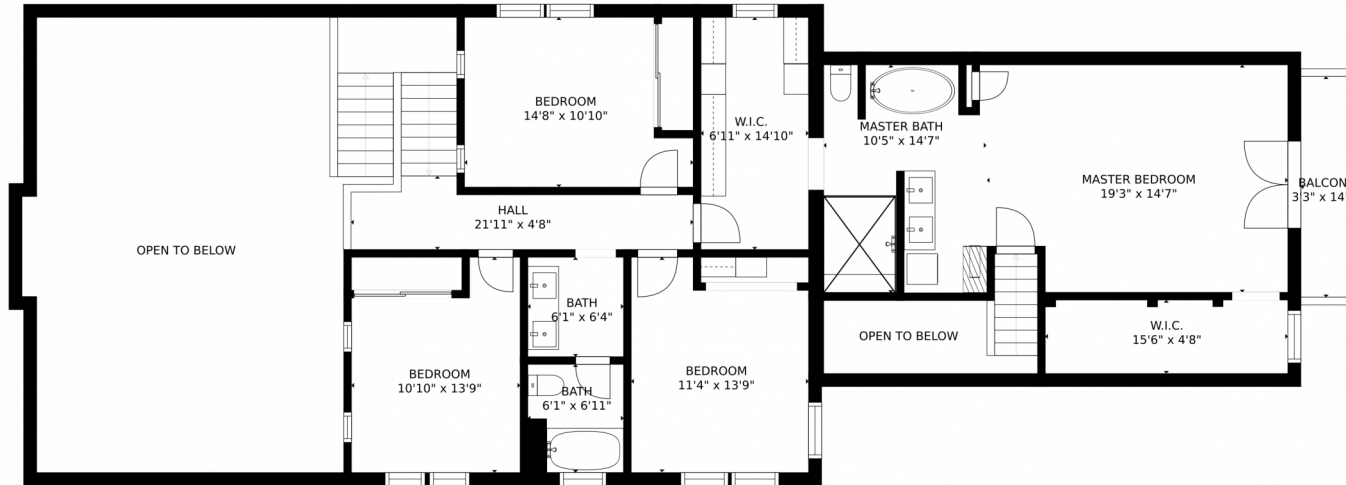
GROSS INTERNAL AREA
FLOOR 1: 1986 sq. ft. FLOOR 2: 2394 sq. ft.
FLOOR 3: 1416 sq. ft. EXCLUDED AREAS:
PATIO: 1896 sq. ft. GARAGE: 719 sq. ft.
BALCONY: 204 sq. ft. DECK: 348 sq. ft.
PORCH: 578 sq. ft.
TOTAL: 5797 sq. ft.
SIZES AND DIMENSIONS ARE APPROXIMATE, ACTUAL MAY VARY.

Disclaimer: Sizes and Dimensions are Approximate, Actual May Vary.



Matthew Lutz
720-448-3822
matthew.f.lutz@gmail.com





GROSS INTERNAL AREA
FLOOR 1: 1986 sq. ft. FLOOR 2: 2394 sq. ft.
FLOOR 3: 1416 sq. ft. EXCLUDED AREAS:
PATIO: 1896 sq. ft. GARAGE: 719 sq. ft.
BALCONY: 204 sq. ft. DECK: 348 sq. ft.
PORCH: 578 sq. ft.
TOTAL: 5797 sq. ft.
SIZES AND DIMENSIONS ARE APPROXIMATE, ACTUAL MAY VARY.

Disclaimer: Sizes and Dimensions are Approximate, Actual May Vary.



Matthew Lutz
720-448-3822
matthew.f.lutz@gmail.com



Scan code
for more
property
details

13591 Jita Lane, Pine, CO 80470 – All Floors



SIZES AND DIMENSIONS ARE APPROXIMATE, ACTUAL MAY VARY.

Disclaimer: Sizes and Dimensions are Approximate, Actual May Vary.



Matthew Lutz
720-448-3822
matthew.f.lutz@gmail.com

