



7227 Silver Moon Drive
 Colorado Springs, CO 80923
COMMUNITY: Quail Brush Creek

MLS # 230020409
PRICE \$485,000

Look no more... Welcome Home!!!



Single Family



3190 SQFT



4 Beds



2/1 Baths



2 Car



0.14 Acre

PROPERTY DETAILS

Beautiful, two-story new build in the middle of the town. This newer home has four bedroom and three and a half baths with finished, walk-out basement and loft on the upper floor. This particular open floor plan has a fantastic kitchen with lots of cabinets, granite countertops, stainless steel appliances and gas stove. Lots of closets through out the whole house with the office on the main level. The upstairs has three spacious bedrooms with walk-in closets. The master bedroom connects to the bathroom that has a soaking bathtub and views of the Pikes Peak with couple of closets. The house located close to stores, hospitals, hiking/biking trails and playgrounds.



Larisa Lazarev
 720-318-3987
 larisa.lazarev@shorewood.com



Scan code
 for more
 property
 details



7227 Silver Moon Drive, Colorado Springs, CO 80923 – All Levels



GROSS INTERNAL AREA
 FLOOR 1: 802 sq. ft. FLOOR 2: 851 sq. ft
 FLOOR 3: 1268 sq. ft. EXCLUDED AREAS:
 BALCONY: 57 sq. ft. PORCH: 56 sq. ft
 GARAGE: 350 sq. ft
 TOTAL: 2921 sq. ft
SIZES AND DIMENSIONS ARE APPROXIMATE, ACTUAL MAY VARY.

Disclaimer: Sizes and Dimensions are Approximate, Actual May Vary.

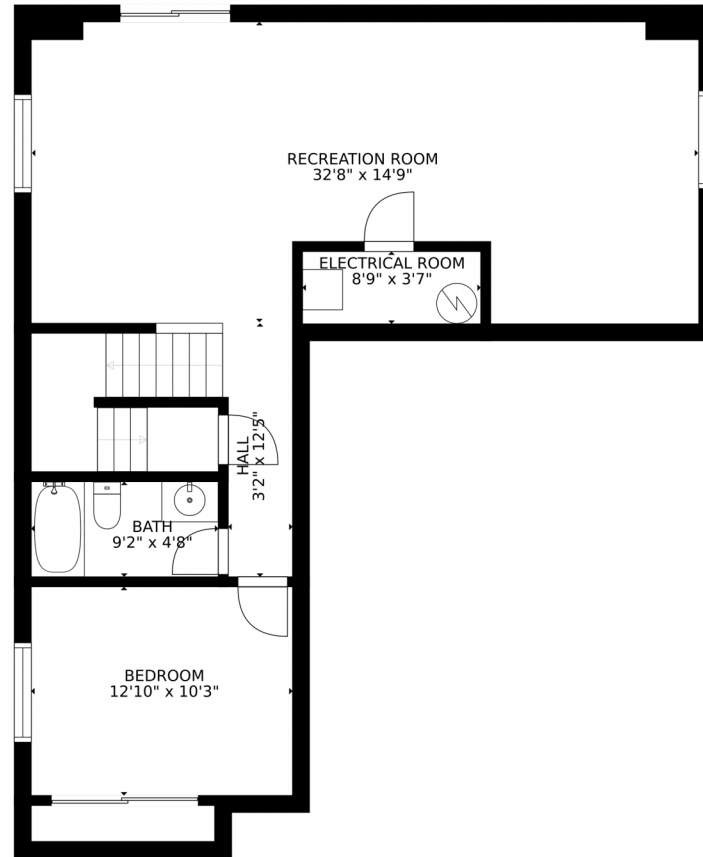


Larisa Lazarev
 720-318-3987
 larisa.lazarev@shorewood.com



Scan code for more property details

7227 Silver Moon Drive, Colorado Springs, CO 80923 – Lower Level



GROSS INTERNAL AREA
FLOOR 1: 802 sq. ft. FLOOR 2: 851 sq. ft.
FLOOR 3: 1268 sq. ft. EXCLUDED AREAS:
BALCONY: 57 sq. ft. PORCH: 56 sq. ft.
GARAGE: 350 sq. ft.
TOTAL: 2921 sq. ft.
SIZES AND DIMENSIONS ARE APPROXIMATE, ACTUAL MAY VARY.

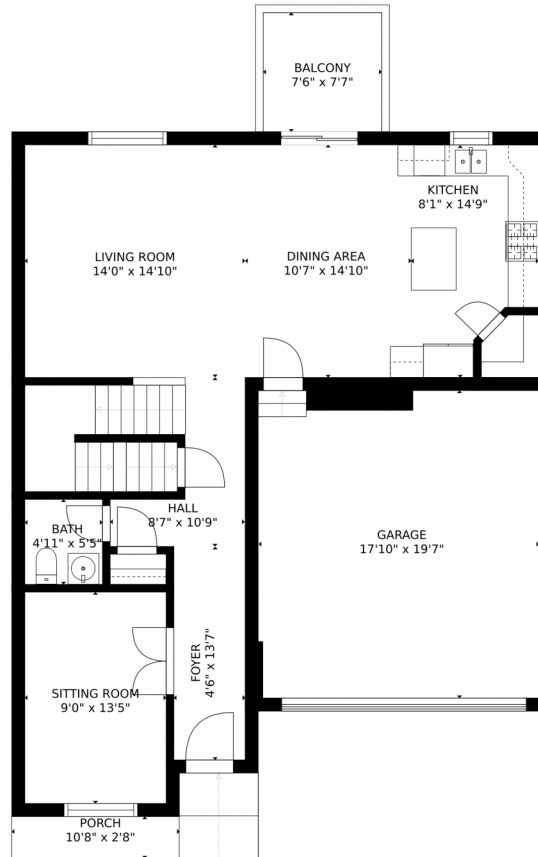
Disclaimer: Sizes and Dimensions are Approximate, Actual May Vary.



Larisa Lazarev
720-318-3987
larisa.lazarev@shorewood.com



7227 Silver Moon Drive, Colorado Springs, CO 80923 – Main Level



GROSS INTERNAL AREA
FLOOR 1: 802 sq. ft. FLOOR 2: 851 sq. ft.
FLOOR 3: 1268 sq. ft. EXCLUDED AREAS:
BALCONY: 57 sq. ft. PORCH: 56 sq. ft.
GARAGE: 350 sq. ft.
TOTAL: 2921 sq. ft.
SIZES AND DIMENSIONS ARE APPROXIMATE, ACTUAL MAY VARY.

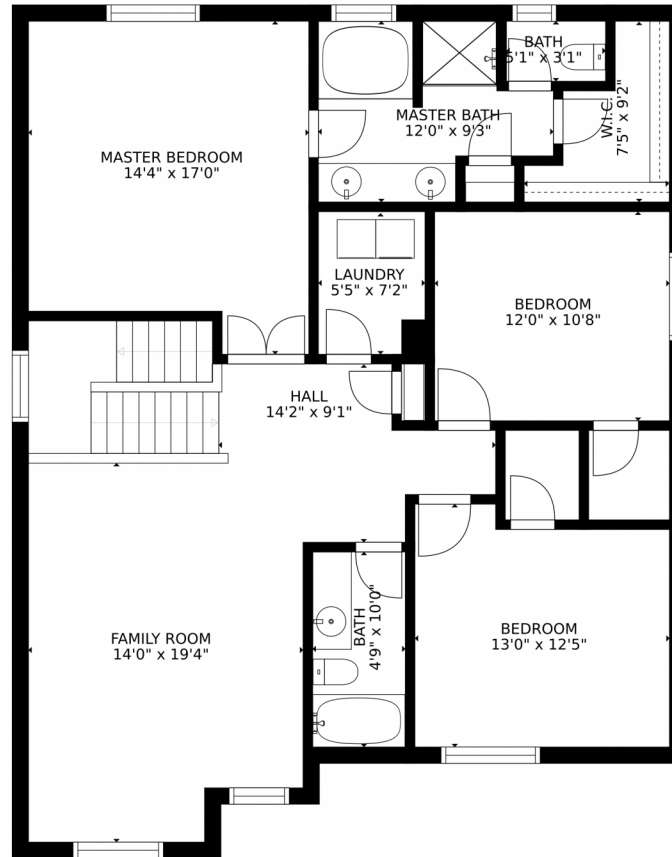
Disclaimer: Sizes and Dimensions are Approximate, Actual May Vary.



Larisa Lazarev
720-318-3987
larisa.lazarev@shorewood.com



7227 Silver Moon Drive, Colorado Springs, CO 80923 – 2nd Level



GROSS INTERNAL AREA
FLOOR 1: 802 sq. ft. FLOOR 2: 851 sq. ft
FLOOR 3: 1268 sq. ft. EXCLUDED AREAS:
BALCONY: 57 sq. ft. PORCH: 56 sq. ft
GARAGE: 350 sq. ft
TOTAL: 2921 sq. ft
SIZES AND DIMENSIONS ARE APPROXIMATE, ACTUAL MAY VARY.

Disclaimer: Sizes and Dimensions are Approximate, Actual May Vary.



Larisa Lazarev
720-318-3987
larisa.lazarev@shorewood.com

