



2169 S Poppy Street  
Lakewood, CO 80228

MLS # 5181839  
PRICE \$979,000



Single Family



3635 SQFT



4 Beds



2/1 Baths



2 Car



0.15 Acre

## PROPERTY DETAILS

Coming Soon – photos and more next week! Foothill views - bright and open! Fabulous walkout 2-decks, covered patio, front porch, no one behind you!



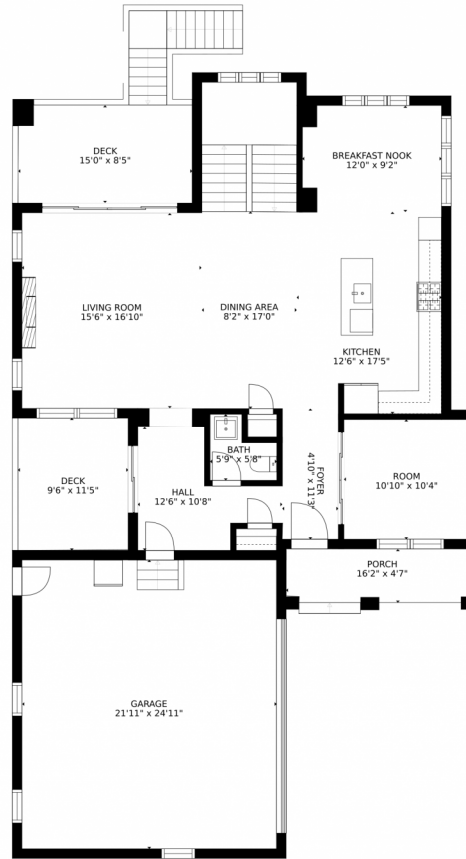
**Annie Schneider**  
303-548-5299  
annie@annieschneider.com



Scan code  
for more  
property  
details



# 2169 S Poppy Street, Lakewood, CO 80228 – Main Level



GROSS INTERNAL AREA  
FLOOR 1: 1140 sq. ft. FLOOR 2: 1152 sq. ft.  
FLOOR 3: 1316 sq. ft. EXCLUDED AREAS:  
PATIO: 140 sq. ft. DECK: 236 sq. ft.  
PORCH: 74 sq. ft. GARAGE: 548 sq. ft.  
TOTAL: 3608 sq. ft.  
SIZES AND DIMENSIONS ARE APPROXIMATE, ACTUAL MAY VARY.

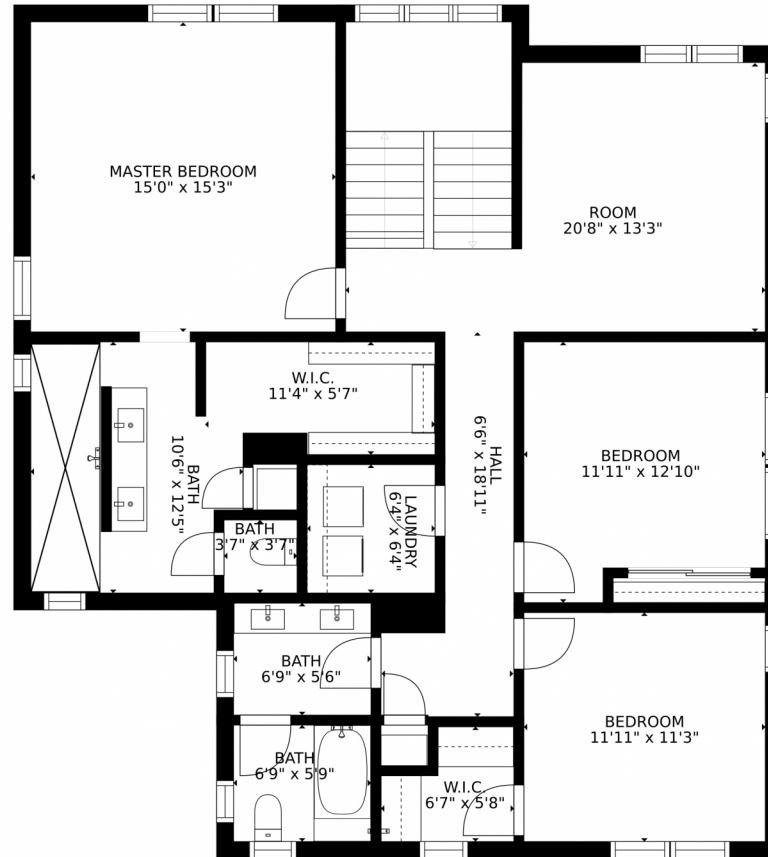
Disclaimer: Sizes and Dimensions are Approximate, Actual May Vary.



**Annie Schneider**  
303-548-5299  
annie@annieschneider.com



# 2169 S Poppy Street, Lakewood, CO 80228 – Upper Level



GROSS INTERNAL AREA  
FLOOR 1: 1140 sq. ft. FLOOR 2: 1152 sq. ft.  
FLOOR 3: 1316 sq. ft. EXCLUDED AREAS:  
PATIO: 140 sq. ft. DECK: 236 sq. ft.  
PORCH: 74 sq. ft. GARAGE: 548 sq. ft.  
TOTAL: 3608 sq. ft.  
SIZES AND DIMENSIONS ARE APPROXIMATE, ACTUAL MAY VARY.

Disclaimer: Sizes and Dimensions are Approximate, Actual May Vary.

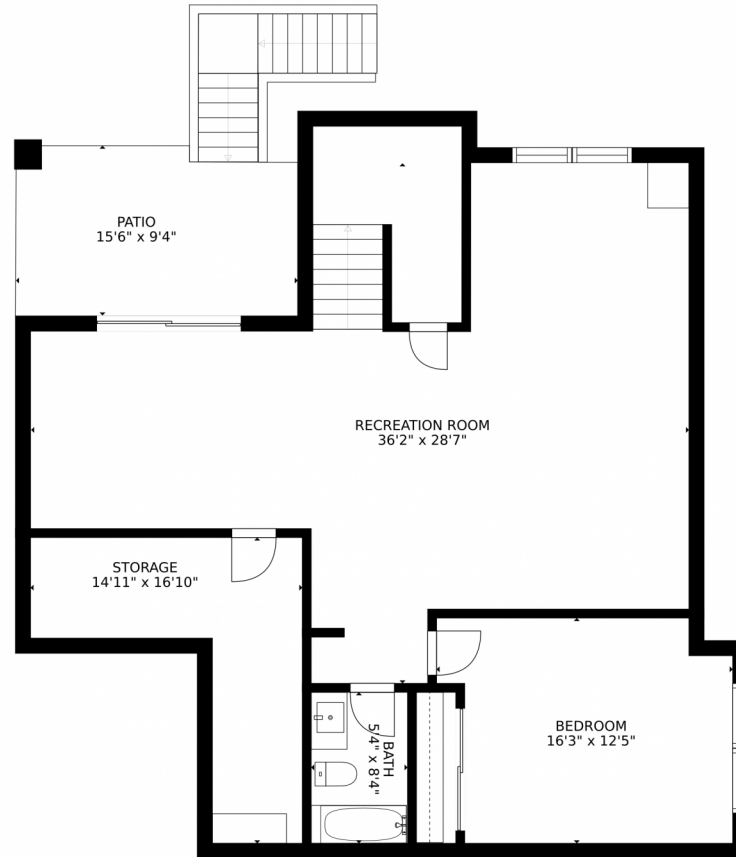


**Annie Schneider**  
303-548-5299  
annie@annieschneider.com



Scan code  
for more  
property  
details

2169 S Poppy Street, Lakewood, CO 80228 – Lower Level



GROSS INTERNAL AREA  
FLOOR 1: 1140 sq. ft. FLOOR 2: 1152 sq. ft.  
FLOOR 3: 1316 sq. ft. EXCLUDED AREAS:  
PATIO: 140 sq. ft. DECK: 236 sq. ft.  
PORCH: 74 sq. ft. GARAGE: 548 sq. ft.  
TOTAL: 3608 sq. ft.  
SIZES AND DIMENSIONS ARE APPROXIMATE, ACTUAL MAY VARY.

Disclaimer: Sizes and Dimensions are Approximate, Actual May Vary.



Annie Schneider  
303-548-5299  
annie@annieschneider.com



Scan code  
for more  
property  
details

# 2169 S Poppy Street, Lakewood, CO 80228 – All Levels



GROSS INTERNAL AREA  
FLOOR 1: 1140 sq. ft, FLOOR 2: 1152 sq. ft  
FLOOR 3: 1316 sq. ft, EXCLUDED AREAS:  
PATIO: 140 sq. ft, DECK: 236 sq. ft  
PORCH: 74 sq. ft, GARAGE: 548 sq. ft  
TOTAL: 3608 sq. ft  
SIZES AND DIMENSIONS ARE APPROXIMATE, ACTUAL MAY VARY.

Disclaimer: Sizes and Dimensions are Approximate, Actual May Vary.



Annie Schneider  
303-548-5299  
annie@annieschneider.com



Scan code  
for more  
property  
details