

Single Family



2014 SQFT



**Taylor Haas**

303-665-7368

taylorh@coloradorpm.com

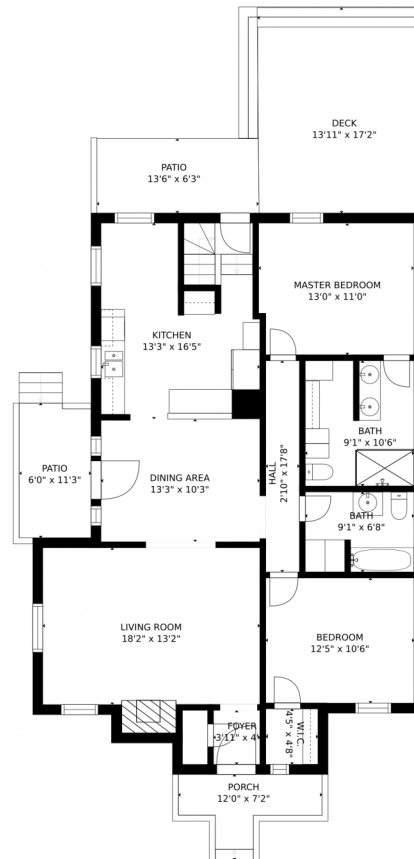
<https://www.coloradorpm.com/available-rental-properties-denver>



Scan code  
for more  
property  
details



# 2521 Krameria Street, Denver, CO 80207 – Main level



GROSS INTERNAL AREA  
FLOOR 1: 659 sq. ft, FLOOR 2: 1196 sq. ft  
EXCLUDED AREAS: , DECK: 239 sq. ft  
PATIO: 151 sq. ft, PORCH: 53 sq. ft  
TOTAL: 1855 sq. ft  
SIZES AND DIMENSIONS ARE APPROXIMATE, ACTUAL MAY VARY.

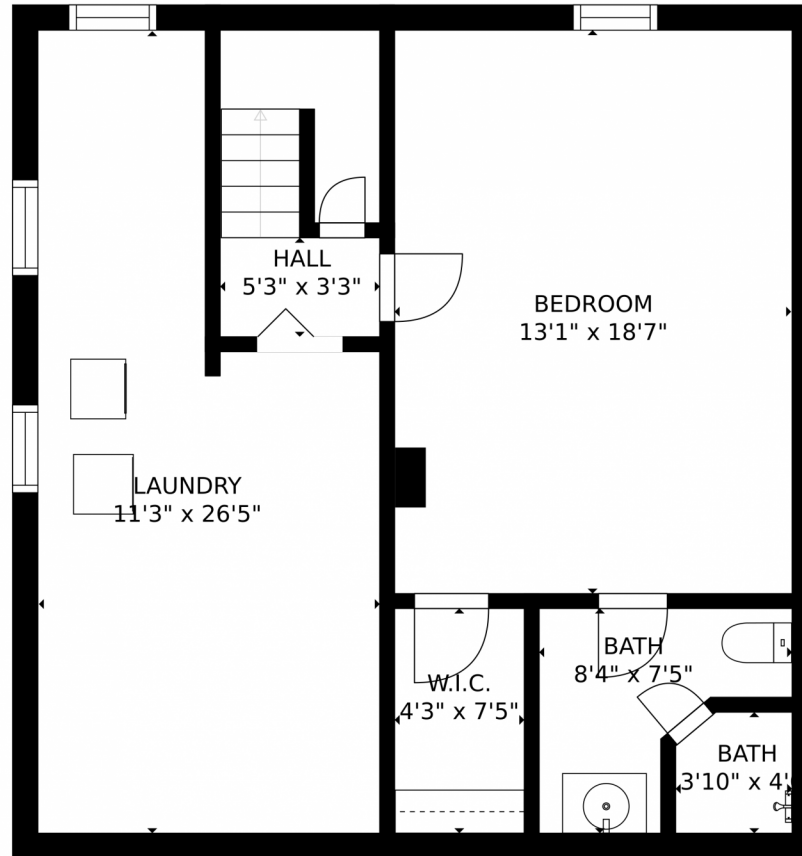
Disclaimer: Sizes and Dimensions are Approximate, Actual May Vary.



**Taylor Haas**  
303-665-7368  
taylorh@coloradorpm.com  
<https://www.coloradorpm.com/available-rental-properties-denv>



2521 Krameria Street, Denver, CO 80207 – Lower Level



GROSS INTERNAL AREA  
FLOOR 1: 659 sq. ft, FLOOR 2: 1196 sq. ft  
EXCLUDED AREAS: , DECK: 239 sq. ft  
PATIO: 151 sq. ft, PORCH: 53 sq. ft  
TOTAL: 1855 sq. ft  
SIZES AND DIMENSIONS ARE APPROXIMATE, ACTUAL MAY VARY.

Disclaimer: Sizes and Dimensions are Approximate, Actual May Vary.



**Taylor Haas**  
303-665-7368  
taylorh@coloradorpm.com  
<https://www.coloradorpm.com/available-rental-properties-denv>





# 2521 Krameria Street, Denver, CO 80207 – All Levels



GROSS INTERNAL AREA  
FLOOR 1: 659 sq. ft, FLOOR 2: 1196 sq. ft  
EXCLUDED AREAS: , DECK: 239 sq. ft  
PATIO: 151 sq. ft, PORCH: 53 sq. ft  
TOTAL: 1855 sq. ft  
SIZES AND DIMENSIONS ARE APPROXIMATE, ACTUAL MAY VARY.

Disclaimer: Sizes and Dimensions are Approximate, Actual May Vary.



**Taylor Haas**  
303-665-7368  
taylorh@coloradorpm.com  
<https://www.coloradorpm.com/available-rental-properties-denv>

