



8207 Swadley Court
 Arvada, CO 80005
 COMMUNITY: Hills at Standley Lake

MLS # 5279140
 PRICE \$765,000



Single Family 4090 SQFT 5 Beds 3/1 Baths 3 Car

PROPERTY DETAILS

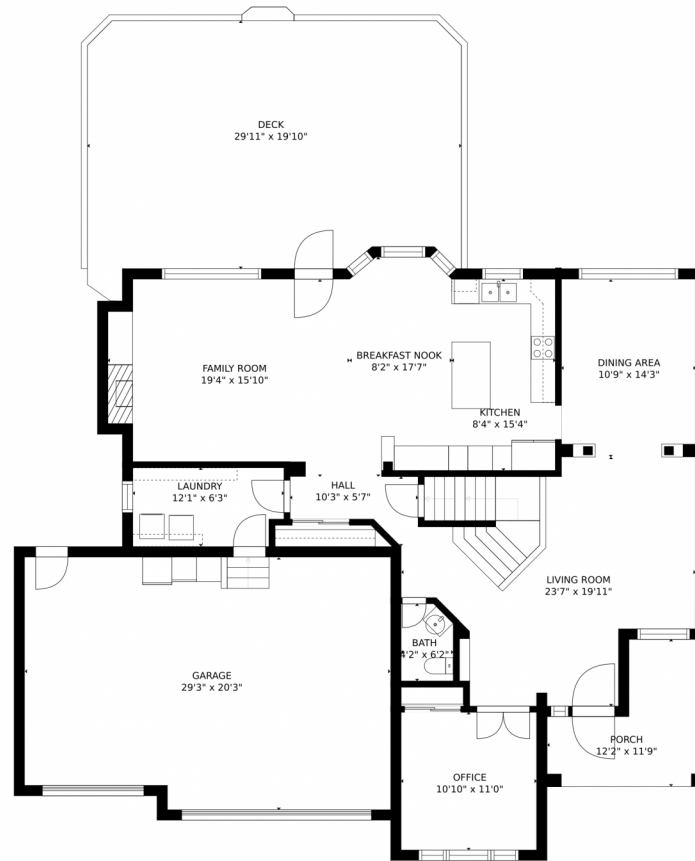
Welcome home to this semi-custom Remington home in Overlook III. The gorgeous two story with fully finished basement will wow you! Immaculate hardwood greets you as you step inside. Notice the warmth and peace that radiates from this home. Beautiful updates throughout the ownership include new kitchen appliances, the exterior of the home was painted in 2020 and has a 9 year warranty. Check out the hurricane shutters on the Family room and Master bedroom windows; made of aircraft aluminum. Wonderful to keep the elements out! So many thoughtful details, it's easy to see the pride of ownership shine. Upstairs you'll find 4 large bedrooms! Note each bedroom is very generously sized, room for everyone, great spaces. Master with beautiful mountain views, and mountain view, plus an amazing, gorgeous spa bathroom, the shower boasts double heads, and walk in closet features built in wall safe! Downstairs you'll find a home theater room with a wonderful entertainment area which includes a microwave and small refrigerator, also has secret hideaway bookshelves that lead to the unfinished storage area, and mechanical area. Also downstairs you'll find an additional room, a 5th bedroom, (currently being used as exercise) Plus another full bath, and a large pantry or store closet. The backyard offers room for so many activities. Enormous 29 x 19 deck, rock water feature, shed for storage, and plenty of grassy area to romp! The 3 car oversized garage is fully finished and insulated, an attic ladder offers easy access to storage above 1 car stall. Ring doorbell, Nest Thermostat, and security flood camera are just a few of the thoughtful extras of this lovely home!



Annie Schneider
 303-548-5299
 annie@annieschneider.com



8207 Swadley Court, Arvada, CO 80005 – Main Level



GROSS INTERNAL AREA
FLOOR 1: 1286 sq. ft. FLOOR 2: 1383 sq. ft.
FLOOR 3: 1205 sq. ft. EXCLUDED AREAS:
DECK: 589 sq. ft. PORCH: 103 sq. ft.
GARAGE: 572 sq. ft.
TOTAL: 3874 sq. ft.
SIZES AND DIMENSIONS ARE APPROXIMATE, ACTUAL MAY VARY.

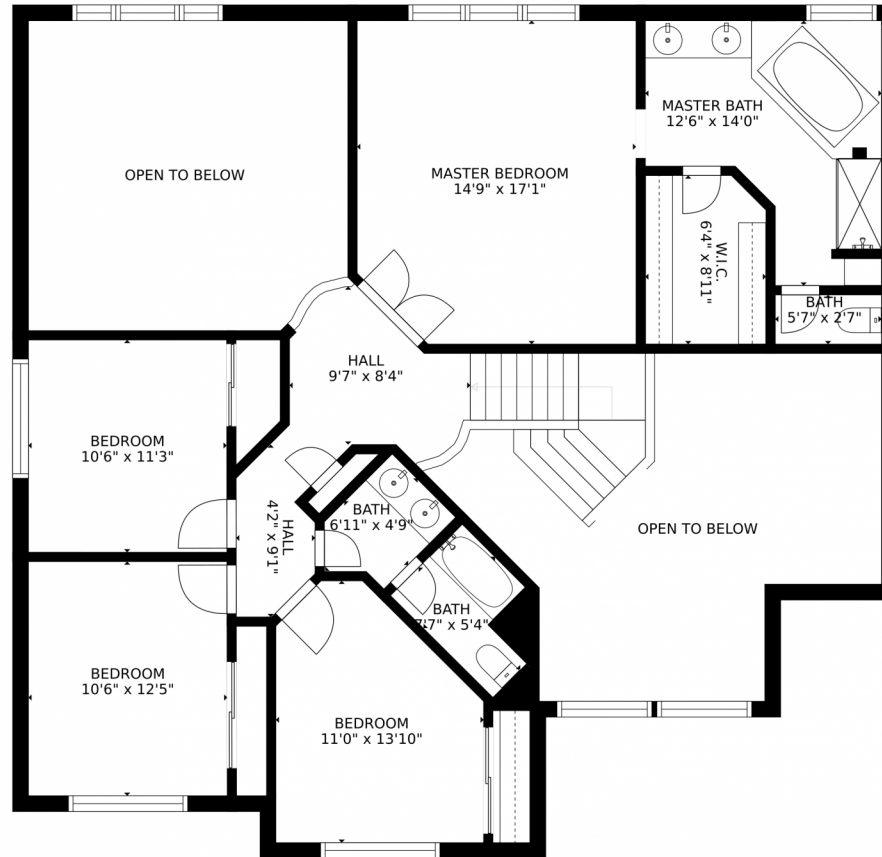
Disclaimer: Sizes and Dimensions are Approximate, Actual May Vary.



Annie Schneider
303-548-5299
annie@annieschneider.com



8207 Swadley Court, Arvada, CO 80005 – Upper Level



GROSS INTERNAL AREA
FLOOR 1: 1286 sq. ft, FLOOR 2: 1383 sq. ft
FLOOR 3: 1205 sq. ft, EXCLUDED AREAS:
DECK: 589 sq. ft, PORCH: 103 sq. ft
GARAGE: 572 sq. ft
TOTAL: 3874 sq. ft
SIZES AND DIMENSIONS ARE APPROXIMATE, ACTUAL MAY VARY.

Disclaimer: Sizes and Dimensions are Approximate, Actual May Vary.

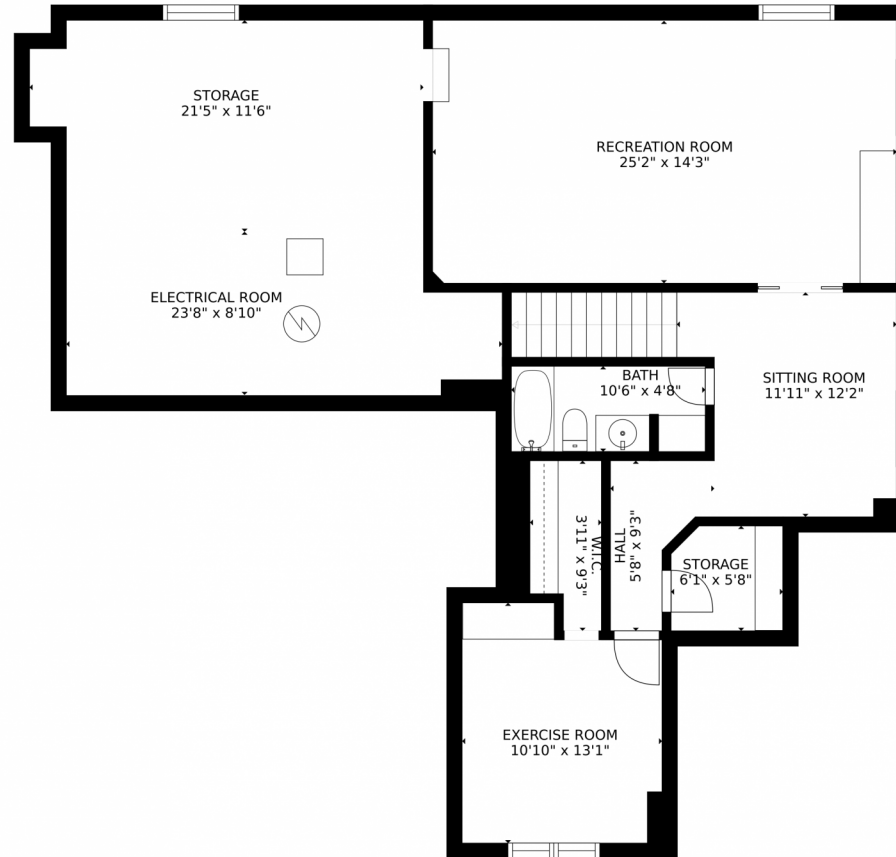


Annie Schneider
303-548-5299
annie@annieschneider.com



Scan code
for more
property
details

8207 Swadley Court, Arvada, CO 80005 – Lower Level



GROSS INTERNAL AREA
FLOOR 1: 1286 sq. ft, FLOOR 2: 1383 sq. ft
FLOOR 3: 1205 sq. ft, EXCLUDED AREAS:
DECK: 589 sq. ft, PORCH: 103 sq. ft
GARAGE: 572 sq. ft
TOTAL: 3874 sq. ft
SIZES AND DIMENSIONS ARE APPROXIMATE, ACTUAL MAY VARY.

Disclaimer: Sizes and Dimensions are Approximate, Actual May Vary.

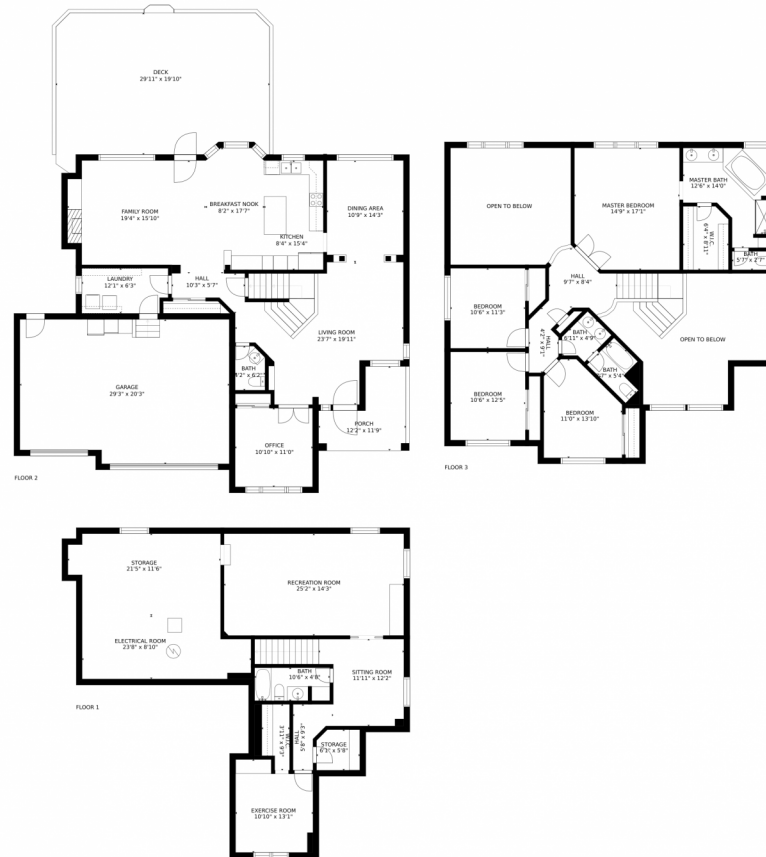


Annie Schneider
303-548-5299
annie@annieschneider.com



Scan code
for more
property
details

8207 Swadley Court, Arvada, CO 80005 – All Levels



GROSS INTERNAL AREA
FLOOR 1: 1286 sq. ft, FLOOR 2: 1383 sq. ft
FLOOR 3: 1205 sq. ft, EXCLUDED AREAS:
DECK: 589 sq. ft, PORCH: 103 sq. ft
GARAGE: 572 sq. ft
TOTAL: 3874 sq. ft
SIZES AND DIMENSIONS ARE APPROXIMATE, ACTUAL MAY VARY.

Disclaimer: Sizes and Dimensions are Approximate, Actual May Vary.



Annie Schneider
303-548-5299
annie@annieschneider.com



Scan code
for more
property
details