



Single Family



1974 SQFT



**Taylor Haas**

303-665-7368

taylorh@coloradorpm.com

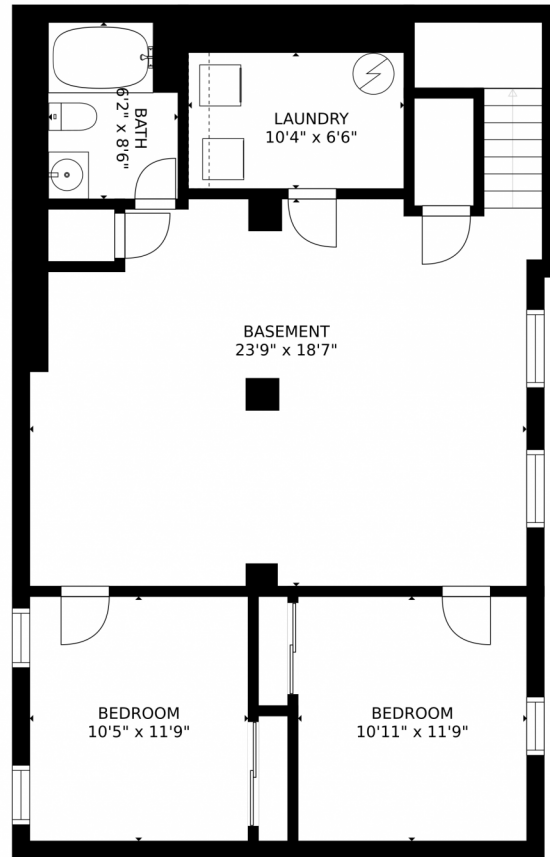
<https://www.coloradorpm.com/available-rental-properties-denver>



Scan code  
for more  
property  
details



3371 West 35th Avenue, Denver, CO 80211 – Basement



GROSS INTERNAL AREA  
FLOOR 1: 942 sq. ft, FLOOR 2: 962 sq. ft  
TOTAL: 1904 sq. ft  
SIZES AND DIMENSIONS ARE APPROXIMATE, ACTUAL MAY VARY.

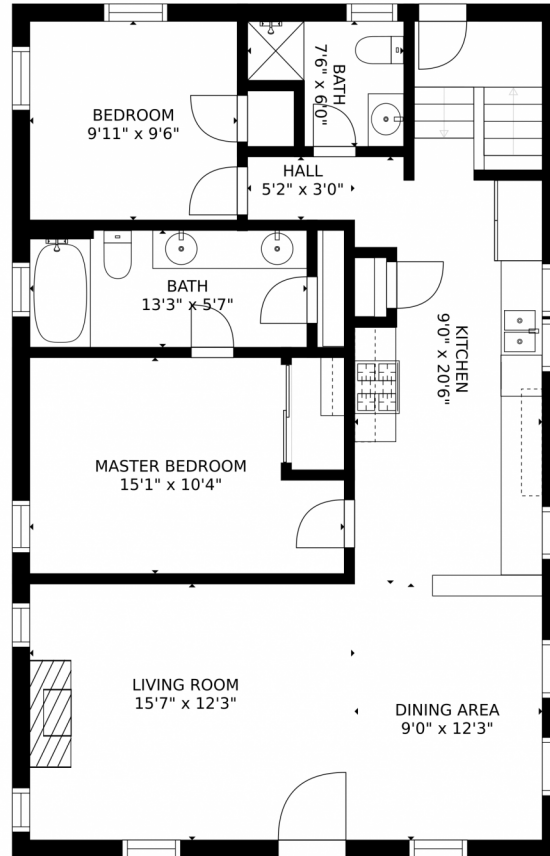
Disclaimer: Sizes and Dimensions are Approximate, Actual May Vary.



**Taylor Haas**  
303-665-7368  
taylorh@coloradorpm.com  
<https://www.coloradorpm.com/available-rental-properties-denv>



3371 West 35th Avenue, Denver, CO 80211 – Main Floor



GROSS INTERNAL AREA  
FLOOR 1: 942 sq. ft, FLOOR 2: 962 sq. ft  
TOTAL: 1904 sq. ft  
SIZES AND DIMENSIONS ARE APPROXIMATE, ACTUAL MAY VARY.

Disclaimer: Sizes and Dimensions are Approximate, Actual May Vary.

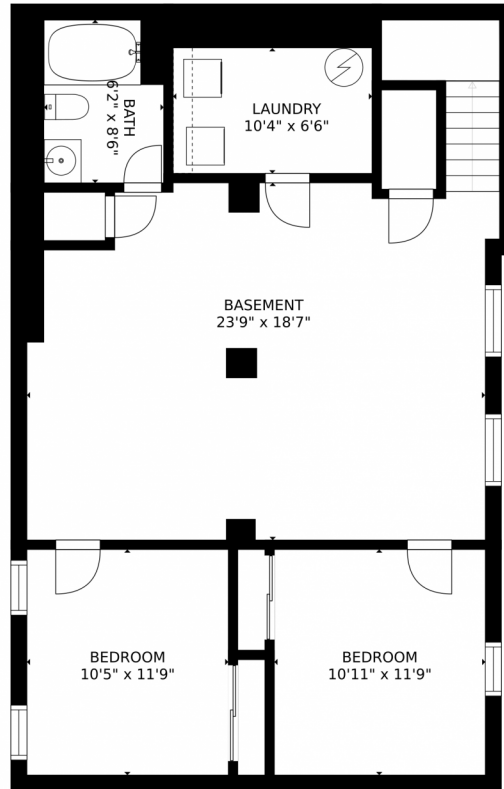


**Taylor Haas**  
303-665-7368  
taylorh@coloradorpm.com  
<https://www.coloradorpm.com/available-rental-properties-denv>

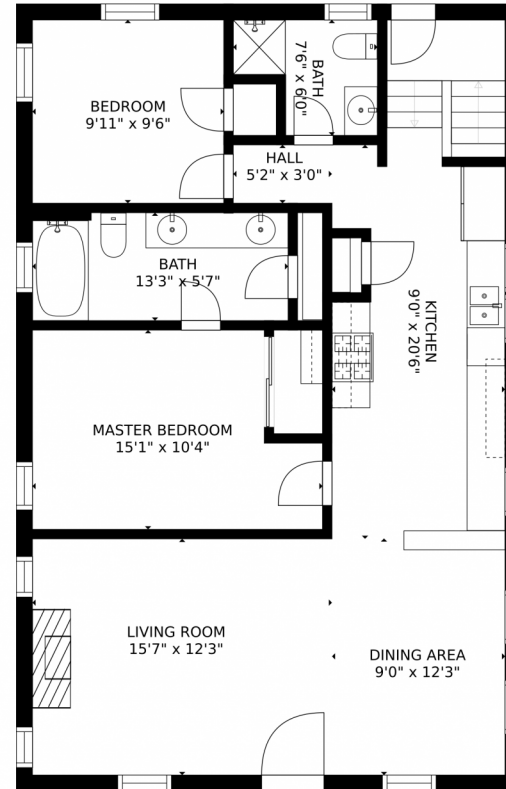




# 3371 West 35th Avenue, Denver, CO 80211 – All Floors



FLOOR 1



FLOOR 2

GROSS INTERNAL AREA  
FLOOR 1: 942 sq. ft, FLOOR 2: 962 sq. ft  
TOTAL: 1904 sq. ft  
SIZES AND DIMENSIONS ARE APPROXIMATE, ACTUAL MAY VARY.

Disclaimer: Sizes and Dimensions are Approximate, Actual May Vary.



**Taylor Haas**  
303-665-7368  
taylorh@coloradorpm.com  
<https://www.coloradorpm.com/available-rental-properties-denver>

