



 Single Family
  4896 SQFT
  4 Beds
  2/1 Baths
  3 Car
  0.22 Acre

PROPERTY DETAILS

Welcome home to the most expansive and sought after layout in the desirable Pioneer Ridge community. As you open the front door you are greeted by a luxurious spiral staircase, gleaming hardwood floors and open floor plan. The home is filled with an abundance of natural light, large windows and tall ceilings. French doors lead to the private, main floor office. The impressive eat-in gourmet kitchen boasts stainless steel appliances, gas cooktop, double oven, with an island and peninsula for additional seating. The open concept is perfect for entertaining and large gatherings. The second floor is thoughtfully designed with a spacious master retreat featuring a 5 piece en-suite with double sided fireplace, large soaking tub and walk-in closet. The large open loft is a perfect second living room or flex space. You will find an additional three large bedrooms one featuring its very own en-suite and the other two offering a Jack and Jill bathroom. Enjoy relaxing in the fully fenced in



Brittany Ryan
303-885-7292
brittany@titanonerealty.com



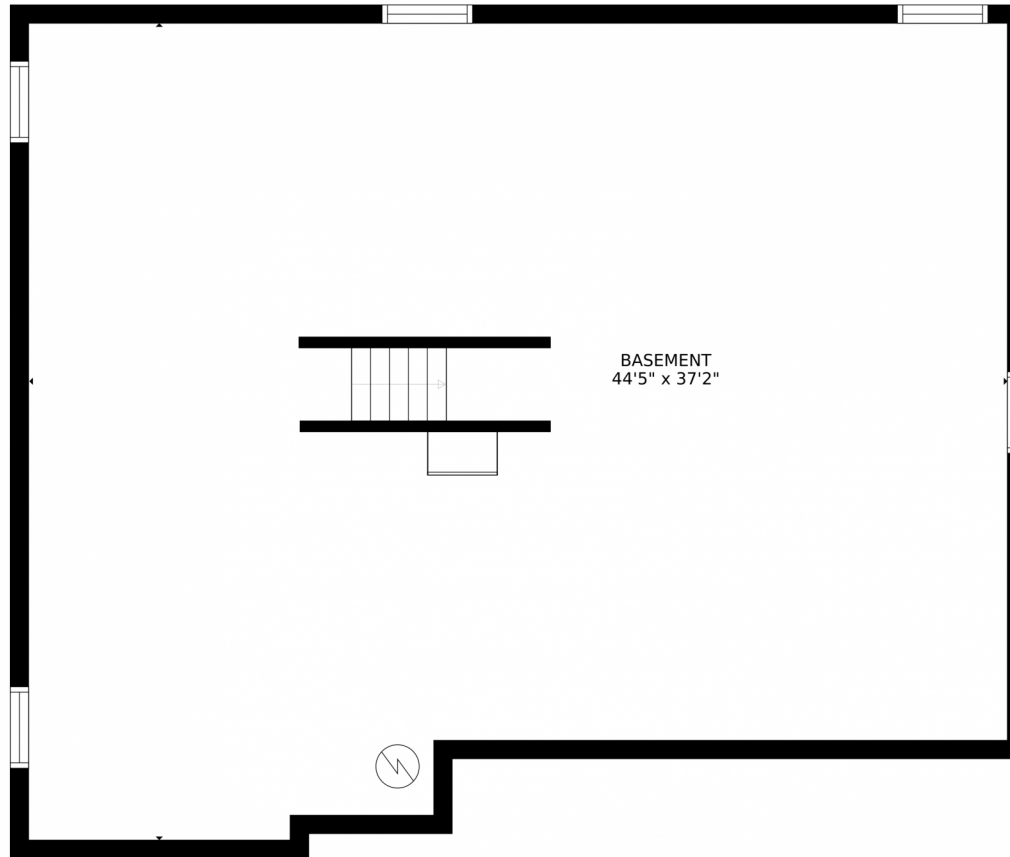
backyard on your patio overlooking walking trails and Pioneer Ridge Park. The home features a three car garage, dual zone HVAC systems and full unfinished basement which includes plumbing rough-in to customize this space to your liking. Don't miss the chance to own this one of a kind floorplan in the neighborhood.



Brittany Ryan
303-885-7292
brittany@titanonerealty.com



327 Saxony Road, Johnstown, CO 80534 – Basement



GROSS INTERNAL AREA
FLOOR 1: 1526 sq. ft, FLOOR 2: 1560 sq. ft
FLOOR 3: 1870 sq. ft, EXCLUDED AREAS:
PATIO: 780 sq. ft, PORCH: 109 sq. ft
TOTAL: 4955 sq. ft
SIZES AND DIMENSIONS ARE APPROXIMATE, ACTUAL MAY VARY.

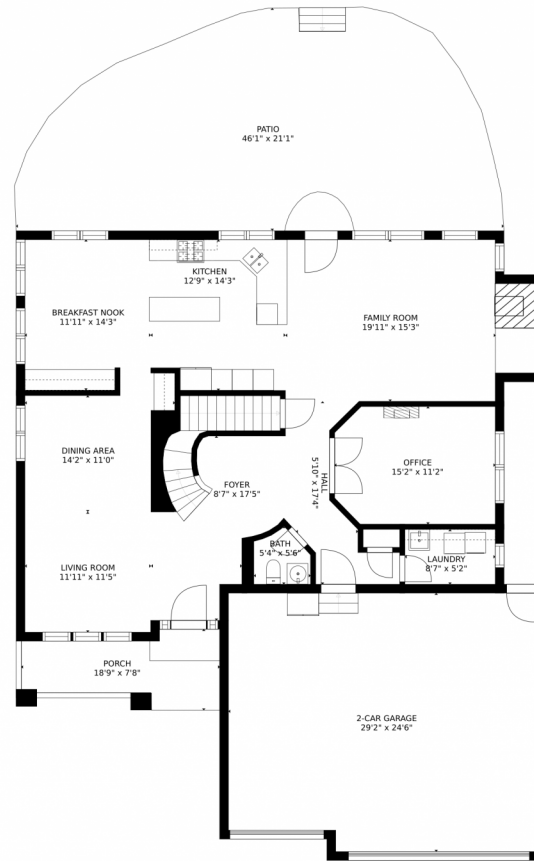
Disclaimer: Sizes and Dimensions are Approximate, Actual May Vary.



Brittany Ryan
303-885-7292
brittany@titanonerealty.com



327 Saxony Road, Johnstown, CO 80534 – Main Level



GROSS INTERNAL AREA
FLOOR 1: 1526 sq. ft, FLOOR 2: 1560 sq. ft
FLOOR 3: 1870 sq. ft, EXCLUDED AREAS:
PATIO: 780 sq. ft, PORCH: 109 sq. ft
TOTAL: 4955 sq. ft
SIZES AND DIMENSIONS ARE APPROXIMATE, ACTUAL MAY VARY.

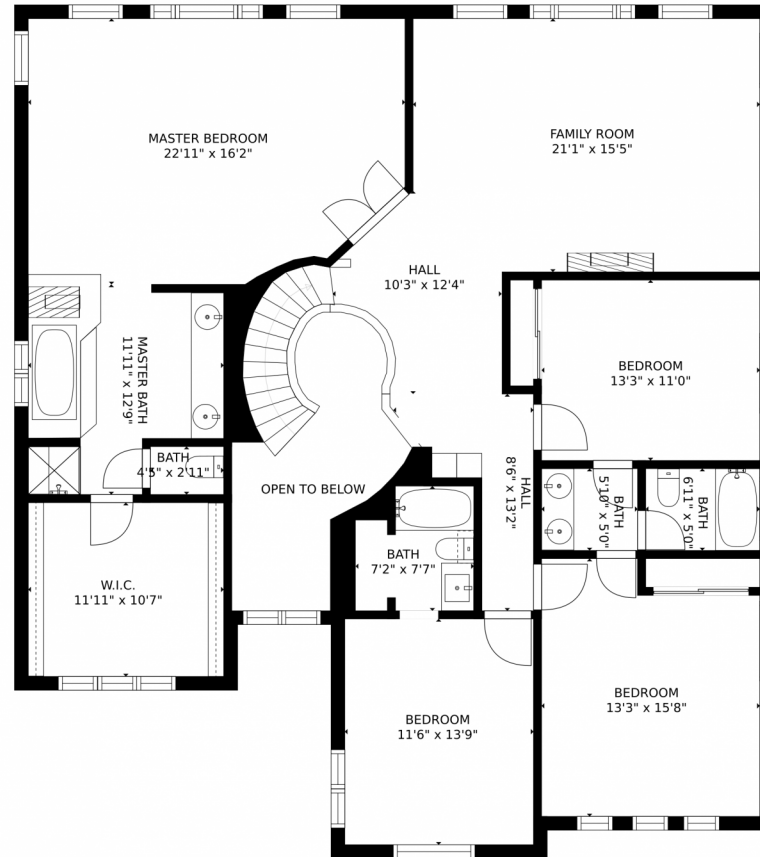
Disclaimer: Sizes and Dimensions are Approximate, Actual May Vary.



Brittany Ryan
303-885-7292
brittany@titanonerealty.com



327 Saxony Road, Johnstown, CO 80534 – 2nd Story



GROSS INTERNAL AREA
FLOOR 1: 1526 sq. ft, FLOOR 2: 1560 sq. ft
FLOOR 3: 1870 sq. ft, EXCLUDED AREAS:
PATIO: 780 sq. ft, PORCH: 109 sq. ft
TOTAL: 4955 sq. ft
SIZES AND DIMENSIONS ARE APPROXIMATE, ACTUAL MAY VARY.

Disclaimer: Sizes and Dimensions are Approximate, Actual May Vary.



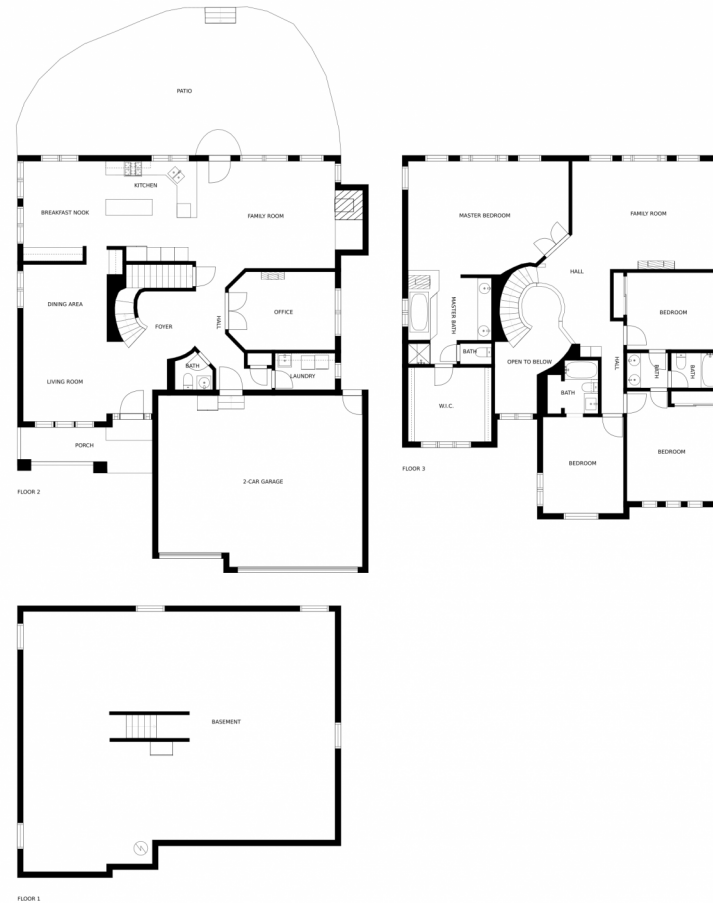
Brittany Ryan
303-885-7292
brittany@titanonerealty.com



Scan code for more property details



327 Saxony Road, Johnstown, CO 80534 – All Floors



SIZES AND DIMENSIONS ARE APPROXIMATE, ACTUAL MAY VARY.

Disclaimer: Sizes and Dimensions are Approximate, Actual May Vary.



Brittany Ryan
303-885-7292
brittany@titanonerealty.com

