



Single Family



2562 SQFT



4 Beds



4/1 Baths

PROPERTY DETAILS

Welcome to this stunning Georgetown remodel on two parcels, with privacy and mountain views; enjoy all the fun of mountain living with modern upgrades and conveniences. The wrap-around deck outside the main entrance is where you'll want to spend all your summer evenings. Once inside, you'll be transported the moment you walk in the door of this stylish and lovingly cared-for home. Architectural Digest-worthy, every detail has been meticulously thought out, custom-designed and carefully constructed. Main floor living is easy with a luscious living room complete with gas fireplace and soaring vaulted ceilings, dining area and chef's kitchen with quartz countertops, subway tile backsplash, open shelving and more storage than you'll ever need. High-end stainless steel appliances, gas cooktop and built-ins complete the functionality of this gorgeous kitchen. Move on to the main floor primary suite with a spacious walk-in closet, spa-like bathroom with separate shower and free-standing tub. Upstairs you'll find another bedroom with ensuite 3/4 bath and another walk-in closet with additional storage. Head to the lower level where there is more space for all your creative ideas; currently used as a sewing room, it can be additional guest space, craft room or office. Full laundry and 1/2 bath adjoin. BUT WAIT, there's more! Walk through the hallway to another complete additional dwelling space with separate entrances, full kitchen, 3/4 bath, 2 more bedrooms and

Andrea Ferency
303-909-1713
andrea.ferency@gmail.com



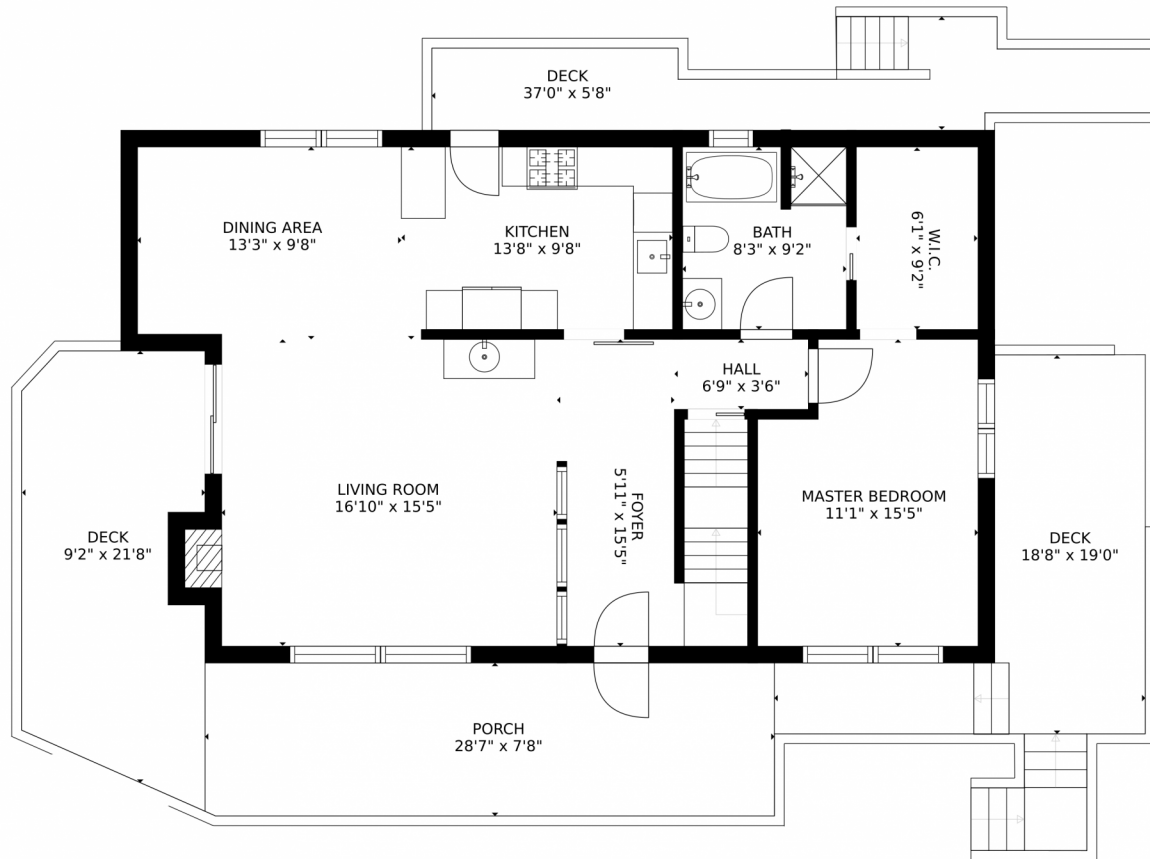
laundry. Step right out to the private deck offering beautiful views and serene surroundings. Plenty of room for guests, family or rent it for additional income. Historic Georgetown offers the best in mountain living, quaint shops, restaurants and just a 45 minute drive to Denver or well under an hour to your favorite ski resorts. Look no further for your perfect mountain home. Schedule your showing today!



Andrea Ferency
303-909-1713
andrea.ferency@gmail.com



1745 Skyline Road, Georgetown, CO 80444 – Main



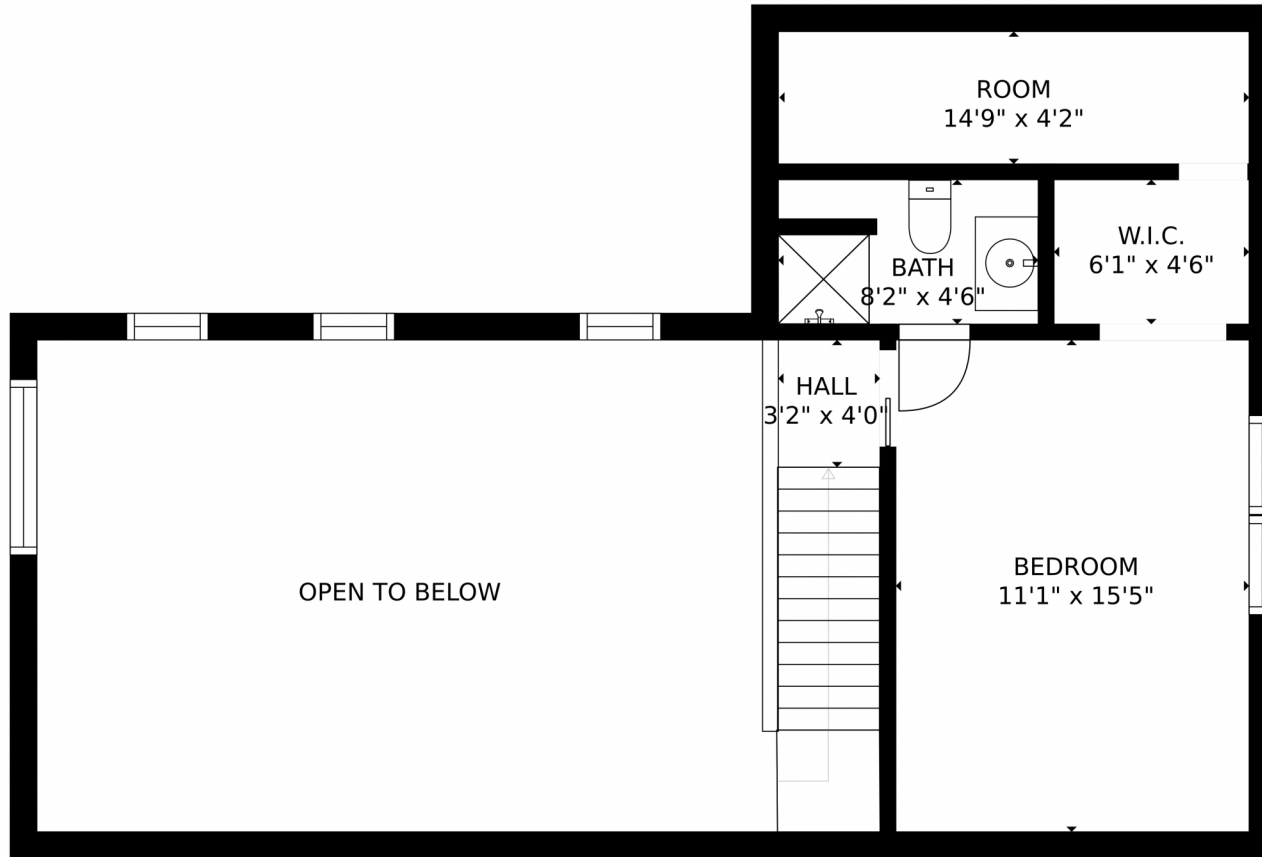
GROSS INTERNAL AREA
FLOOR 1: 954 sq. ft. FLOOR 2: 954 sq. ft.
FLOOR 3: 999 sq. ft. FLOOR 4: 378 sq. ft.
EXCLUDED AREAS: , DECK: 898 sq. ft.
PATIO: 157 sq. ft. PORCH: 220 sq. ft.
TOTAL: 3284 sq. ft.
SIZES AND DIMENSIONS ARE APPROXIMATE, ACTUAL MAY VARY.

Disclaimer: Sizes and Dimensions are Approximate, Actual May Vary.

Andrea Ferency
303-909-1713
andrea.ferency@gmail.com



1745 Skyline Road, Georgetown, CO 80444 – 2nd Level



GROSS INTERNAL AREA
FLOOR 1: 954 sq. ft, FLOOR 2: 954 sq. ft
FLOOR 3: 999 sq. ft, FLOOR 4: 378 sq. ft
EXCLUDED AREAS: , DECK: 898 sq. ft
PATIO: 157 sq. ft, PORCH: 220 sq. ft
TOTAL: 3284 sq. ft
SIZES AND DIMENSIONS ARE APPROXIMATE, ACTUAL MAY VARY.

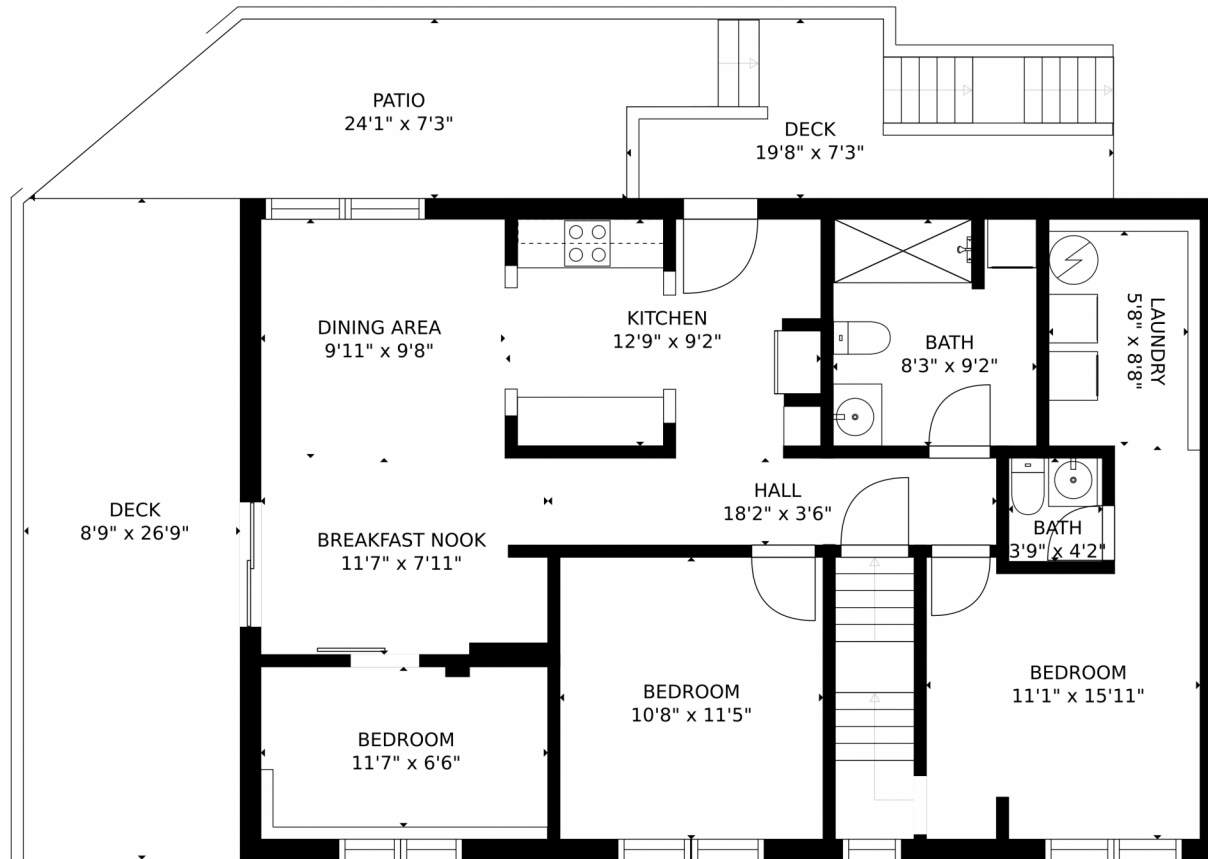
Disclaimer: Sizes and Dimensions are Approximate, Actual May Vary.

Andrea Ferency
303-909-1713
andrea.ferency@gmail.com



Scan code
for more
property
details

1745 Skyline Road, Georgetown, CO 80444 – Lower Level



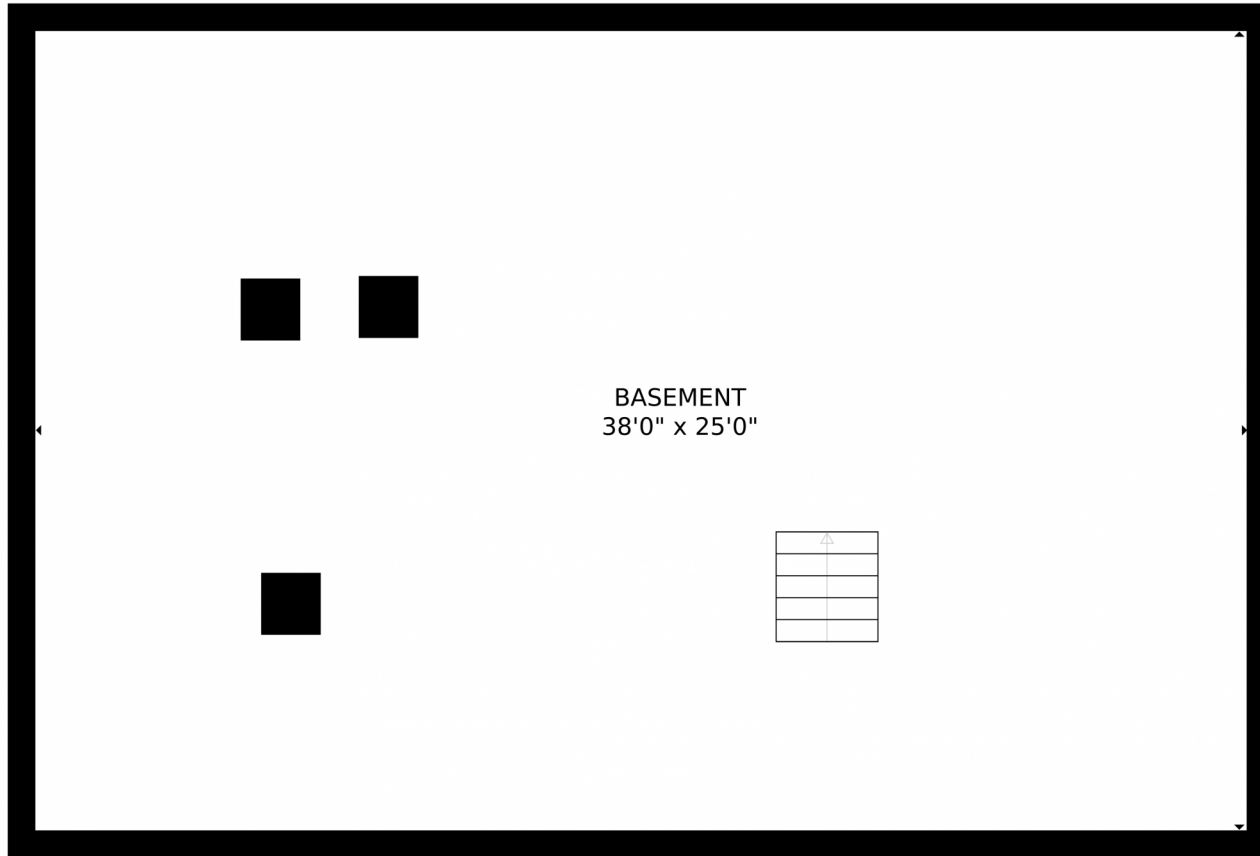
GROSS INTERNAL AREA
FLOOR 1: 954 sq. ft. FLOOR 2: 954 sq. ft
FLOOR 3: 999 sq. ft. FLOOR 4: 378 sq. ft
EXCLUDED AREAS: , DECK: 898 sq. ft
PATIO: 157 sq. ft. PORCH: 220 sq. ft
TOTAL: 3284 sq. ft
SIZES AND DIMENSIONS ARE APPROXIMATE, ACTUAL MAY VARY.

Disclaimer: Sizes and Dimensions are Approximate, Actual May Vary.

Andrea Ferency
303-909-1713
andrea.ferency@gmail.com



Scan code
for more
property
details



GROSS INTERNAL AREA
FLOOR 1: 954 sq. ft, FLOOR 2: 954 sq. ft
FLOOR 3: 999 sq. ft, FLOOR 4: 378 sq. ft
EXCLUDED AREAS: , DECK: 898 sq. ft
PATIO: 157 sq. ft, PORCH: 220 sq. ft
TOTAL: 3284 sq. ft
SIZES AND DIMENSIONS ARE APPROXIMATE, ACTUAL MAY VARY.

Disclaimer: Sizes and Dimensions are Approximate, Actual May Vary.

1745 Skyline Road, Georgetown, CO 80444 – All Levels



GROSS INTERNAL AREA
 FLOOR 1: 954 sq. ft, FLOOR 2: 954 sq. ft
 FLOOR 3: 999 sq. ft, FLOOR 4: 378 sq. ft
 EXCLUDED AREAS: , DECK: 898 sq. ft
 PATIO: 157 sq. ft, PORCH: 220 sq. ft
 TOTAL: 3284 sq. ft

SIZES AND DIMENSIONS ARE APPROXIMATE, ACTUAL MAY VARY.

Disclaimer: Sizes and Dimensions are Approximate, Actual May Vary.

Andrea Ferency
 303-909-1713
 andrea.ferency@gmail.com

