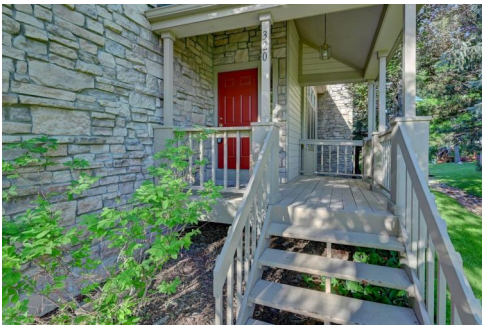




320 Diamond Circle  
Louisville, CO 80027



Single Family



2300 SQFT

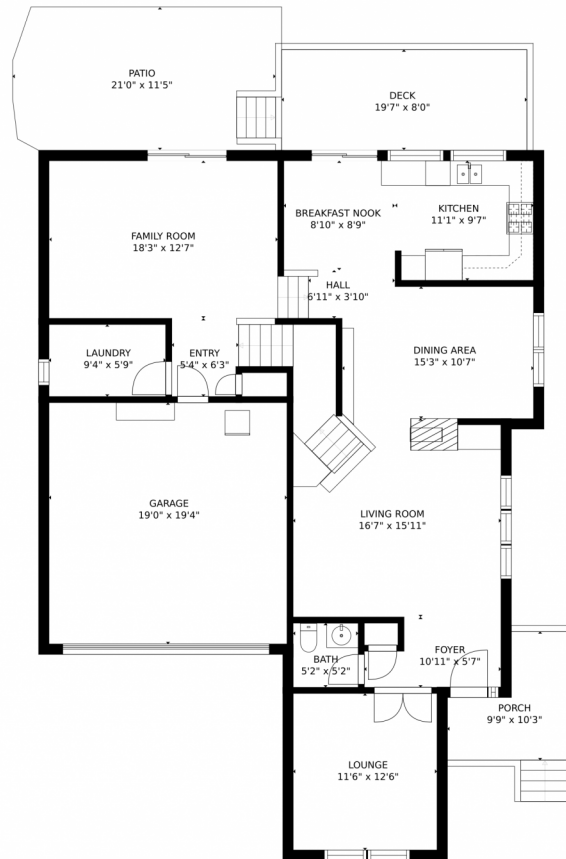


**Jennifer Butler**  
303-902-1751  
jennifer@elevatedrealestate.com



Scan code  
for more  
property  
details

# 320 Diamond Circle, Louisville, CO 80027 – Main



GROSS INTERNAL AREA  
FLOOR 1: 842 sq. ft. FLOOR 2: 1271 sq. ft.  
FLOOR 3: 571 sq. ft. EXCLUDED AREAS:  
DECK: 158 sq. ft. PATIO: 242 sq. ft.  
PORCH: 73 sq. ft. GARAGE: 367 sq. ft.  
TOTAL: 2684 sq. ft.  
SIZES AND DIMENSIONS ARE APPROXIMATE, ACTUAL MAY VARY.

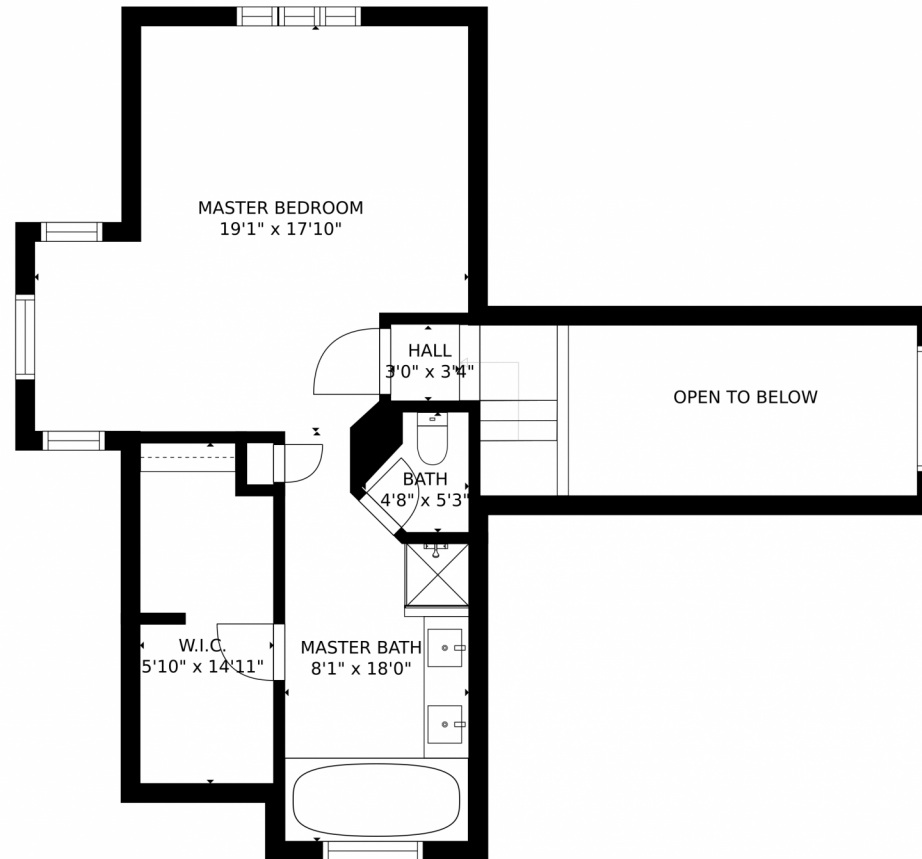
Disclaimer: Sizes and Dimensions are Approximate, Actual May Vary.



**Jennifer Butler**  
303-902-1751  
jennifer@elevatedrealestate.com

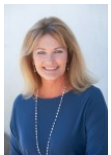


320 Diamond Circle, Louisville, CO 80027 – 2nd Level



GROSS INTERNAL AREA  
FLOOR 1: 842 sq. ft, FLOOR 2: 1271 sq. ft  
FLOOR 3: 571 sq. ft, EXCLUDED AREAS:  
DECK: 158 sq. ft, PATIO: 242 sq. ft  
PORCH: 73 sq. ft, GARAGE: 367 sq. ft  
TOTAL: 2684 sq. ft  
SIZES AND DIMENSIONS ARE APPROXIMATE, ACTUAL MAY VARY.

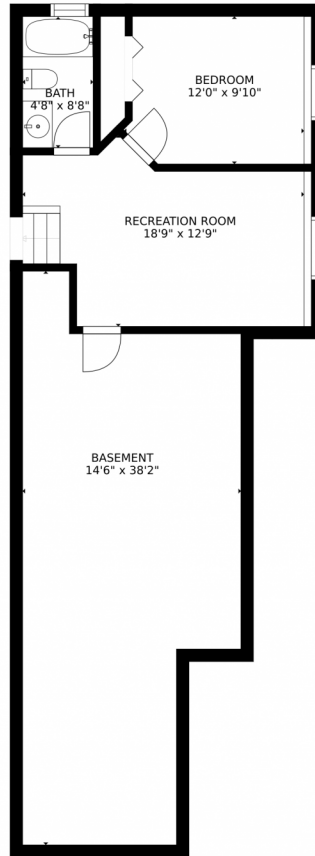
Disclaimer: Sizes and Dimensions are Approximate, Actual May Vary.



**Jennifer Butler**  
303-902-1751  
jennifer@elevatedrealestate.com



320 Diamond Circle, Louisville, CO 80027 — Basement



GROSS INTERNAL AREA  
FLOOR 1: 842 sq. ft, FLOOR 2: 1271 sq. ft  
FLOOR 3: 571 sq. ft, EXCLUDED AREAS:  
DECK: 158 sq. ft, PATIO: 242 sq. ft  
PORCH: 73 sq. ft, GARAGE: 367 sq. ft  
TOTAL: 2684 sq. ft  
SIZES AND DIMENSIONS ARE APPROXIMATE, ACTUAL MAY VARY.

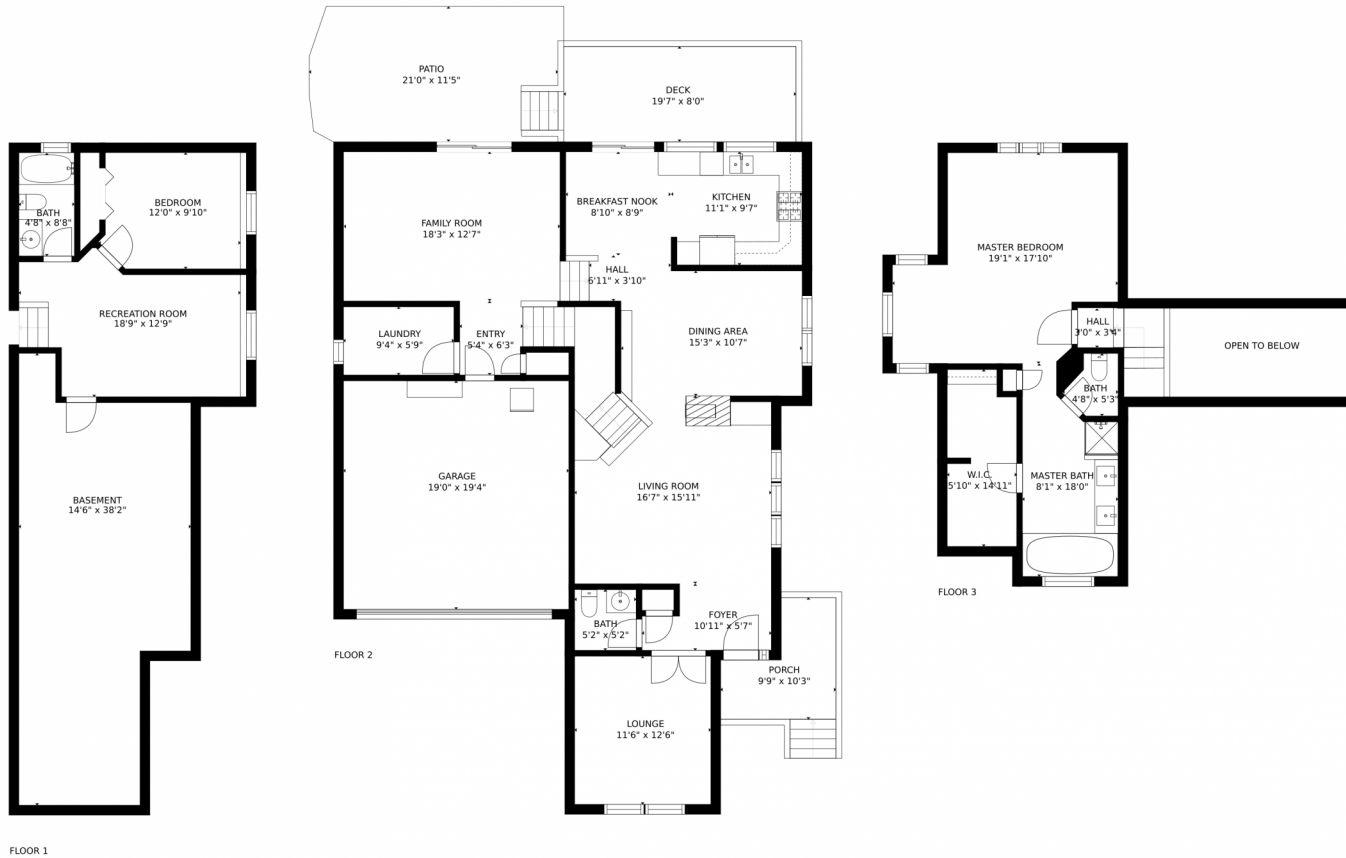
Disclaimer: Sizes and Dimensions are Approximate, Actual May Vary.



**Jennifer Butler**  
303-902-1751  
jennifer@elevatedrealestate.com



# 320 Diamond Circle, Louisville, CO 80027 – All Levels



GROSS INTERNAL AREA  
 FLOOR 1: 842 sq. ft, FLOOR 2: 1271 sq. ft  
 FLOOR 3: 571 sq. ft, EXCLUDED AREAS:  
 DECK: 158 sq. ft, PATIO: 242 sq. ft  
 PORCH: 73 sq. ft, GARAGE: 367 sq. ft  
 TOTAL: 2684 sq. ft  
 SIZES AND DIMENSIONS ARE APPROXIMATE, ACTUAL MAY VARY.

Disclaimer: Sizes and Dimensions are Approximate, Actual May Vary.



**Jennifer Butler**  
 303-902-1751  
 jennifer@elevatedrealestate.com

