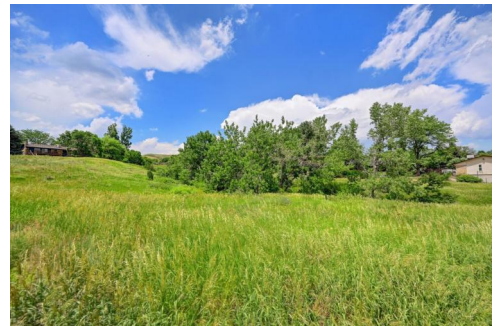




1846 S Welch Circle
 Lakewood, CO 80228
 COMMUNITY: Green Mountain Village

MLS # 6233818
 PRICE \$650,000



Single Family



3158 SQFT



4 Beds



4/1 Baths



2 Car



0.2 Acre

PROPERTY DETAILS

Welcome home to this spacious 4-bedroom, 4-bath traditional home in Green Mountain! Fantastic location with sunset views and close proximity to open space, Ute Trail Garden, walking, biking and hiking trails at the popular Forsberg Iron Spring Park, nearby schools/parks/dog parks, plus quick access to Red Rocks Amphitheater and C-470, Denver and ski slopes. Large tri-level with over 3,100 square feet. Spacious living and dining room on the main floor plus an open kitchen with island, newer refrigerator, and access to an expansive shaded deck, perfect for outdoor entertaining. Upstairs, you'll find 4 large bedrooms and 2 baths, including an en suite primary bath. The family room on the lower level offers a gas fireplace with access to a bonus sunroom that has been used as an office. The laundry area is conveniently located just off the family room along with a half bath. The basement is finished and includes a ¾ bath and plenty of room for storage. Roof is about 4 years new, and water heater was replaced in 2019. In 2020, the Driveway was replaced and expanded to fit approximately 5 vehicles. This property has a 770 SF RV concrete pad (35x22 feet) adjacent to the garage. No HOA in this community and lower taxes are a benefit. The backyard is completely fenced, has several areas of full sun awaiting your personal touch for gardening/ landscaping. A large Ash tree provides shade for the multi-level deck off the kitchen. In the winter, Welch & Utah



Donna Burkard (Underwood)
 720-775-7471
 donna@redunderwood.com



Scan code
 for more
 property
 details



are plowed as they are Lakewood Bus Routes- even in the heaviest snow, sellers have been able to drive to work! This home has a ton of potential and awaits your updates!

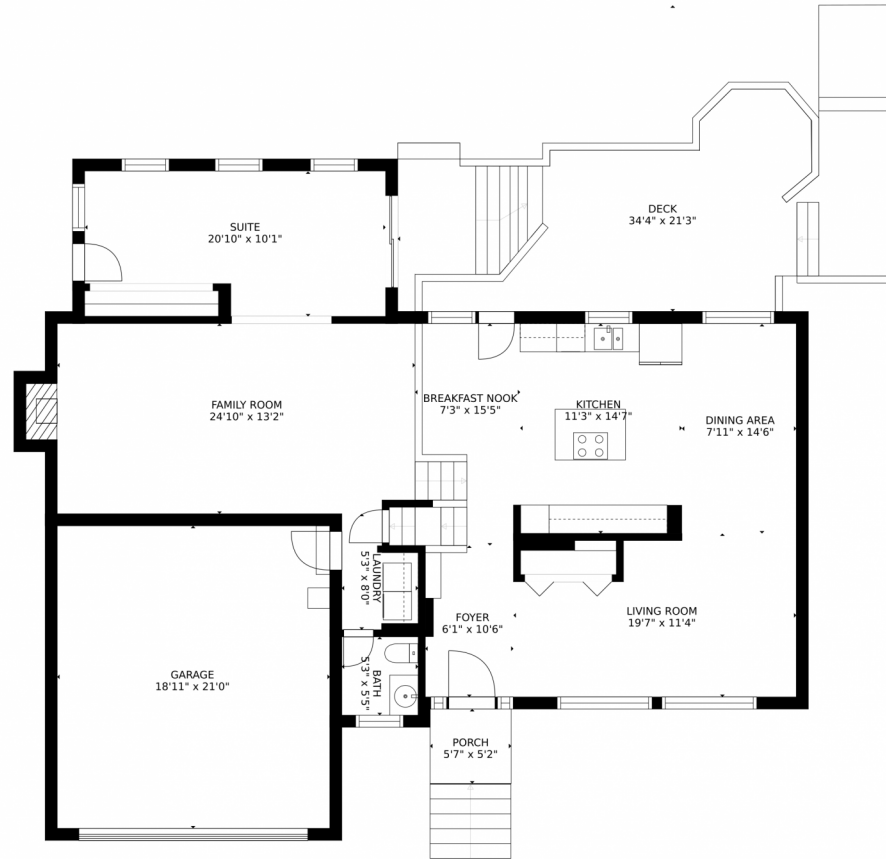


Donna Burkard (Underwood)
720-775-7471
donna@redunderwood.com



Scan code
for more
property
details





GROSS INTERNAL AREA
FLOOR 1: 646 sq. ft. FLOOR 2: 1311 sq. ft.
FLOOR 3: 906 sq. ft. EXCLUDED AREAS:
DECK: 437 sq. ft. PORCH: 29 sq. ft.
GARAGE: 396 sq. ft.
TOTAL: 2863 sq. ft.
SIZES AND DIMENSIONS ARE APPROXIMATE, ACTUAL MAY VARY.

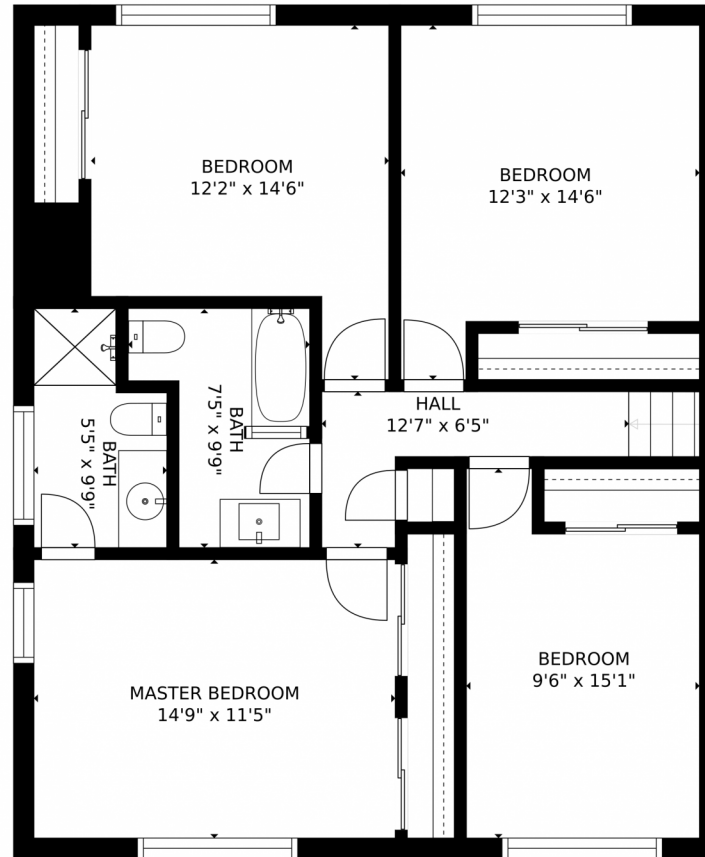
Disclaimer: Sizes and Dimensions are Approximate, Actual May Vary.



Donna Burkard (Underwood)
720-775-7471
donna@redunderwood.com



1846 S Welch Circle, Lakewood, CO 80228 – 2nd Level



GROSS INTERNAL AREA
FLOOR 1: 646 sq. ft. FLOOR 2: 1311 sq. ft.
FLOOR 3: 906 sq. ft. EXCLUDED AREAS:
DECK: 437 sq. ft. PORCH: 29 sq. ft.
GARAGE: 396 sq. ft.
TOTAL: 2863 sq. ft.
SIZES AND DIMENSIONS ARE APPROXIMATE, ACTUAL MAY VARY.

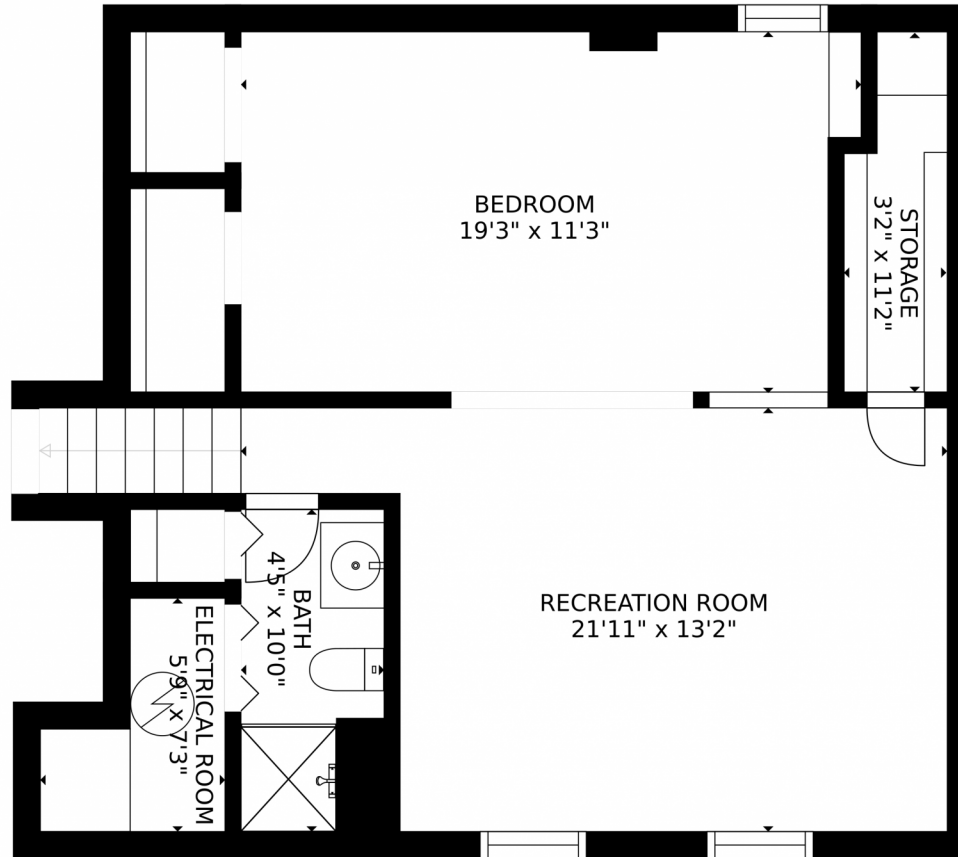
Disclaimer: Sizes and Dimensions are Approximate, Actual May Vary.



Donna Burkard (Underwood)
720-775-7471
donna@redunderwood.com



1846 S Welch Circle, Lakewood, CO 80228 – Basement



GROSS INTERNAL AREA
FLOOR 1: 646 sq. ft. FLOOR 2: 1311 sq. ft.
FLOOR 3: 906 sq. ft. EXCLUDED AREAS:
DECK: 437 sq. ft. PORCH: 29 sq. ft.
GARAGE: 396 sq. ft.
TOTAL: 2863 sq. ft.
SIZES AND DIMENSIONS ARE APPROXIMATE, ACTUAL MAY VARY.

Disclaimer: Sizes and Dimensions are Approximate, Actual May Vary.



Donna Burkard (Underwood)
720-775-7471
donna@redunderwood.com



1846 S Welch Circle, Lakewood, CO 80228 – All Levels



GROSS INTERNAL AREA
FLOOR 1: 646 sq. ft, FLOOR 2: 1311 sq. ft
FLOOR 3: 906 sq. ft, EXCLUDED AREAS:
DECK: 437 sq. ft, PORCH: 29 sq. ft
GARAGE: 396 sq. ft
TOTAL: 2863 sq. ft
SIZES AND DIMENSIONS ARE APPROXIMATE, ACTUAL MAY VARY.

Disclaimer: Sizes and Dimensions are Approximate, Actual May Vary.



Donna Burkard (Underwood)
720-775-7471
donna@redunderwood.com



Scan code
for more
property
details