



200 S Park Avenue
Fort Lupton, CO 80621

MLS # 8729719
PRICE \$419,990



Single Family



2700 SQFT



4 Beds



2 Baths



2 Car



0.17 Acre

PROPERTY DETAILS

Wow! Move in ready 4 bed 2 bath brick ranch on large corner lot with no HOA for under \$450k. New air conditioning, furnace and hot water heater. Oversized 2 car garage with work space and detached 24x12 workshop with electric and cooling. Large fenced back yard with mature landscaping, patio, dog run and sprinklers. Home has many built ins, including large formal dining area with built in hutch. Formal dining area has a close off sliding door and french doors to patio, could be used as an office. Large galley kitchen has eat in kitchen space for a dining room table. Buyer to verify all info, basement bedrooms are non conforming. Furniture is virtually displayed staging, not actually in home.



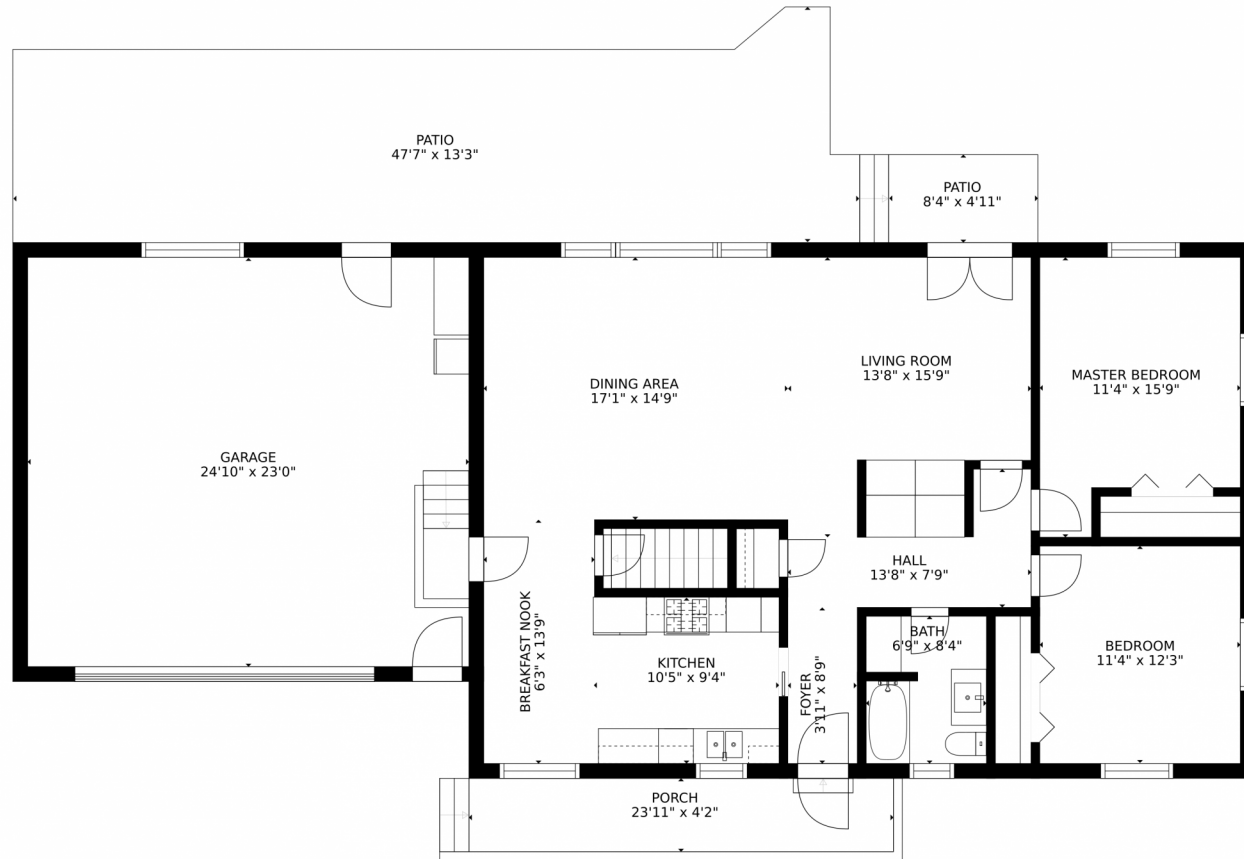
Gordon Kelly
720-302-3400
gordon@2020realestateco.com



Scan code
for more
property
details



200 S Park Avenue, Fort Lupton, CO 80621 – Main Level



GROSS INTERNAL AREA
FLOOR 1: 1214 sq. ft, FLOOR 2: 1214 sq. ft
EXCLUDED AREAS: , PATIO: 560 sq. ft
PORCH: 99 sq. ft, GARAGE: 573 sq. ft
TOTAL: 2428 sq. ft
SIZES AND DIMENSIONS ARE APPROXIMATE, ACTUAL MAY VARY.

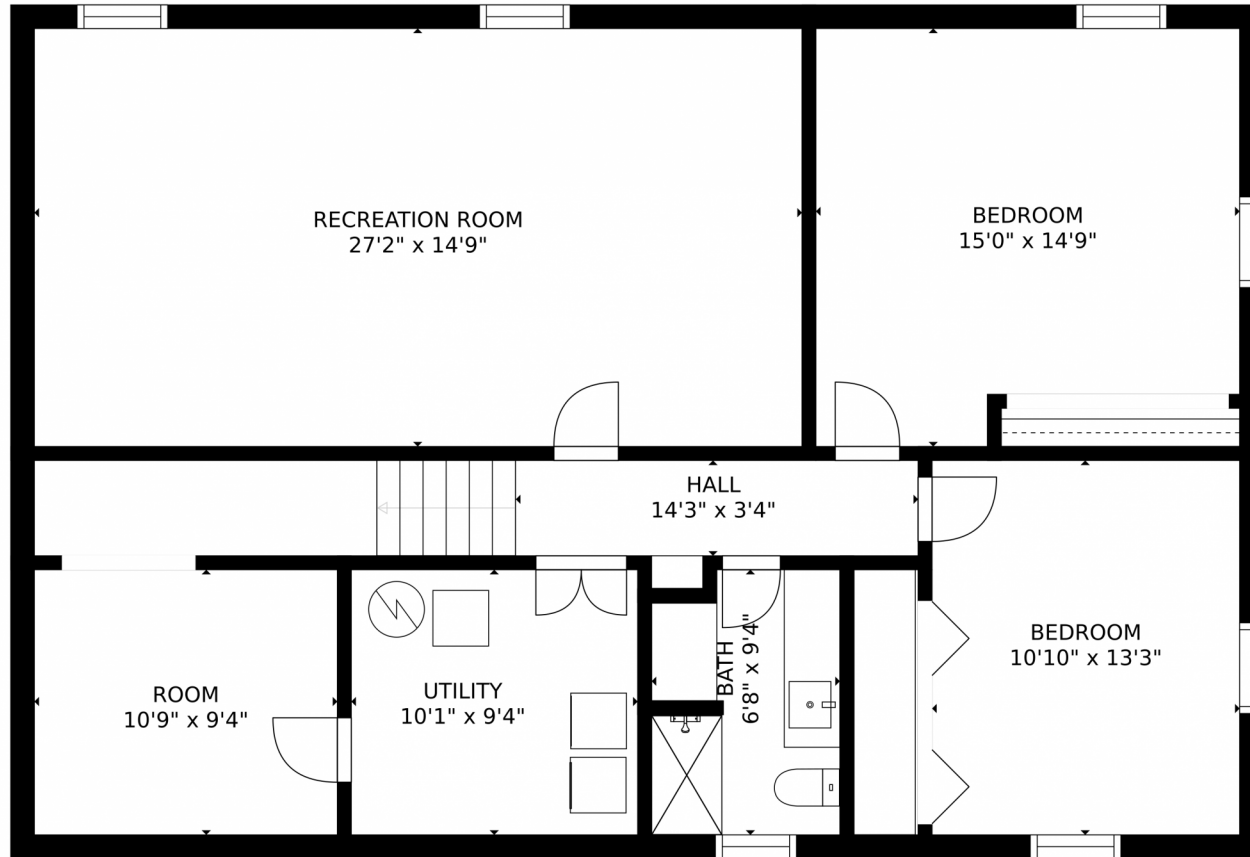
Disclaimer: Sizes and Dimensions are Approximate, Actual May Vary.



Gordon Kelly
720-302-3400
gordon@2020realestateco.com



200 S Park Avenue, Fort Lupton, CO 80621 – Lower Level



GROSS INTERNAL AREA
FLOOR 1: 1214 sq. ft., FLOOR 2: 1214 sq. ft
EXCLUDED AREAS: , PATIO: 560 sq. ft
PORCH: 99 sq. ft., GARAGE: 573 sq. ft
TOTAL: 2428 sq. ft
SIZES AND DIMENSIONS ARE APPROXIMATE, ACTUAL MAY VARY.

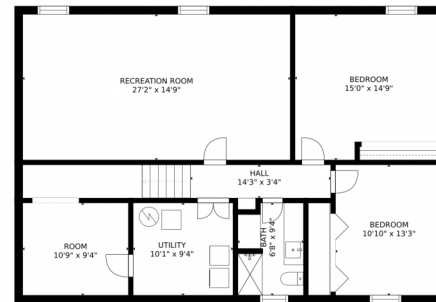
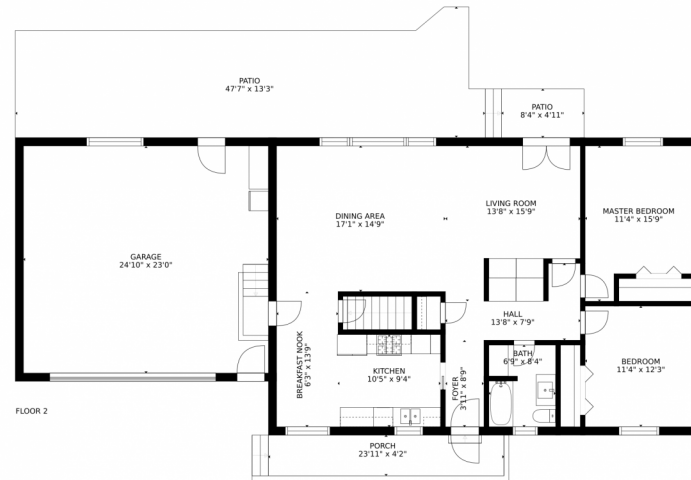
Disclaimer: Sizes and Dimensions are Approximate, Actual May Vary.



Gordon Kelly
720-302-3400
gordon@2020realestateco.com



200 S Park Avenue, Fort Lupton, CO 80621 – All Levels



GROSS INTERNAL AREA
FLOOR 1: 1214 sq. ft., FLOOR 2: 1214 sq. ft
EXCLUDED AREAS: , PATIO: 560 sq. ft
PORCH: 99 sq. ft., GARAGE: 573 sq. ft
TOTAL: 2428 sq. ft
SIZES AND DIMENSIONS ARE APPROXIMATE, ACTUAL MAY VARY.

Disclaimer: Sizes and Dimensions are Approximate, Actual May Vary.



Gordon Kelly
720-302-3400
gordon@2020realestateco.com



Scan code
for more
property
details