

Condominium



1471 SQFT



3 Beds



3/1 Baths



2 Car



0.03 Acre

PROPERTY DETAILS

BACKS UP TO A WONDERFUL PARK AND LAKE - STEPS OUT YOUR BACK-DOOR

Open and spacious move-in ready 2-story condo with HUGE 2-Car Built-Under garage with direct access to the unit. 3 spacious bedrooms and 2 1/2 baths! Excellent condition with new carpet, new paint, refinished Cherry HW floors, new slab granite counters and NEW kitchen appliances + washer and dryer by the Master!

Wide open plan is bathed in light! Direct access to the park + 2 additional balconies/decks that overlook the park! Front covered porch + another sun-drenched balcony of the 2nd bedroom! Four (4) total balconies! Perfect for entertaining! Great room concept! Large family room with cozy gas FIREPLACE!

Updated kitchen with tons of cabinets and counters + a long breakfast bar! Storage everywhere! The upper level boasts 2 good sized bedrooms including the large master with a private bath + private balcony! The 3rd bedroom is on the lower floor with a door out to the park and is suitable for a guest bedroom, work-out, office or den.



Daniel Prewitt
720-583-4848
daniel.prewitt@kw.com



Scan code
for more
property
details



Conveniently located close to Olde Town Arvada and Golden! Great access to the mountains, downtown or DIA via I-70!

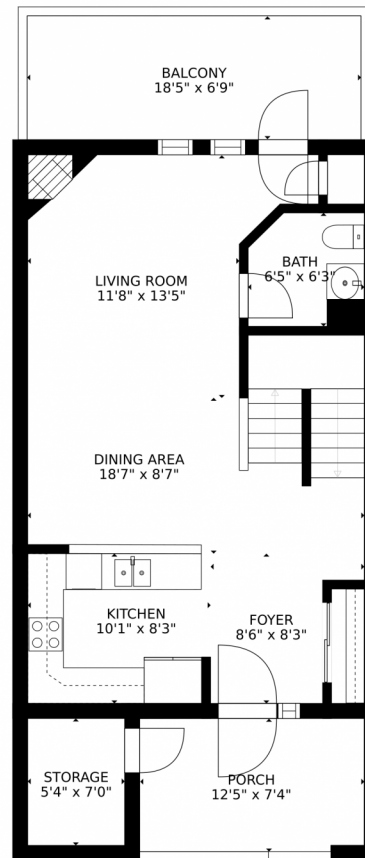


Daniel Prewitt
720-583-4848
daniel.prewitt@kw.com



Scan code
for more
property
details





GROSS INTERNAL AREA
FLOOR 1: 260 sq. ft. FLOOR 2: 602 sq. ft.
FLOOR 3: 598 sq. ft. EXCLUDED AREAS:
PATIO: 120 sq. ft. GARAGE: 437 sq. ft.
BALCONY: 307 sq. ft. PORCH: 91 sq. ft.
TOTAL: 1460 sq. ft.
SIZES AND DIMENSIONS ARE APPROXIMATE, ACTUAL MAY VARY.

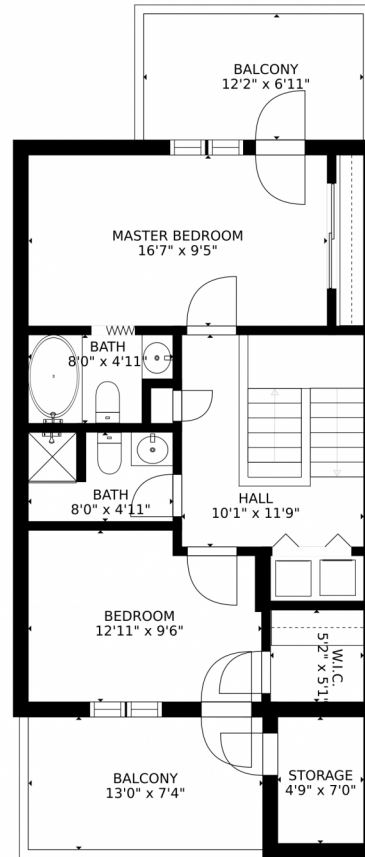
Disclaimer: Sizes and Dimensions are Approximate, Actual May Vary.



Daniel Prewitt
720-583-4848
daniel.prewitt@kw.com



5081 Garrison Street, Wheat Ridge, CO 80033 – 2nd Level



GROSS INTERNAL AREA
FLOOR 1: 260 sq. ft. FLOOR 2: 602 sq. ft.
FLOOR 3: 598 sq. ft. EXCLUDED AREAS:
PATIO: 120 sq. ft. GARAGE: 437 sq. ft.
BALCONY: 307 sq. ft. PORCH: 91 sq. ft.
TOTAL: 1460 sq. ft.
SIZES AND DIMENSIONS ARE APPROXIMATE, ACTUAL MAY VARY.

Disclaimer: Sizes and Dimensions are Approximate, Actual May Vary.

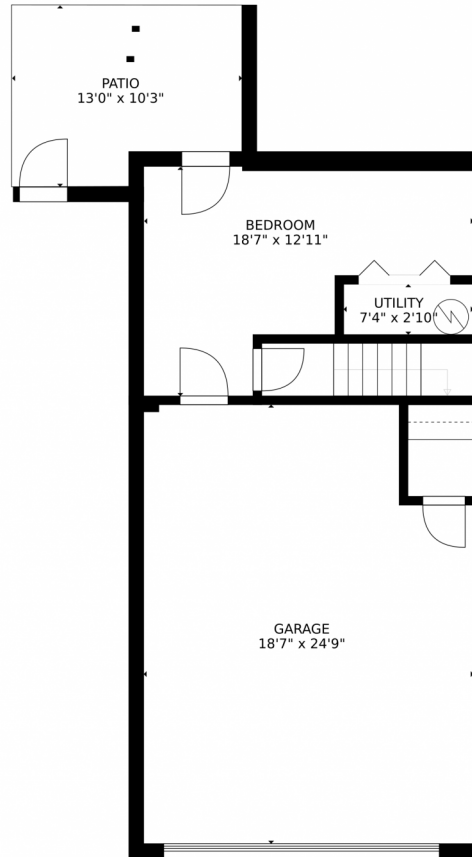


Daniel Prewitt
720-583-4848
daniel.prewitt@kw.com



Scan code
for more
property
details

5081 Garrison Street, Wheat Ridge, CO 80033 – Lower Level



GROSS INTERNAL AREA
FLOOR 1: 260 sq. ft. FLOOR 2: 602 sq. ft.
FLOOR 3: 598 sq. ft. EXCLUDED AREAS:
PATIO: 120 sq. ft. GARAGE: 437 sq. ft.
BALCONY: 307 sq. ft. PORCH: 91 sq. ft.
TOTAL: 1460 sq. ft.
SIZES AND DIMENSIONS ARE APPROXIMATE, ACTUAL MAY VARY.

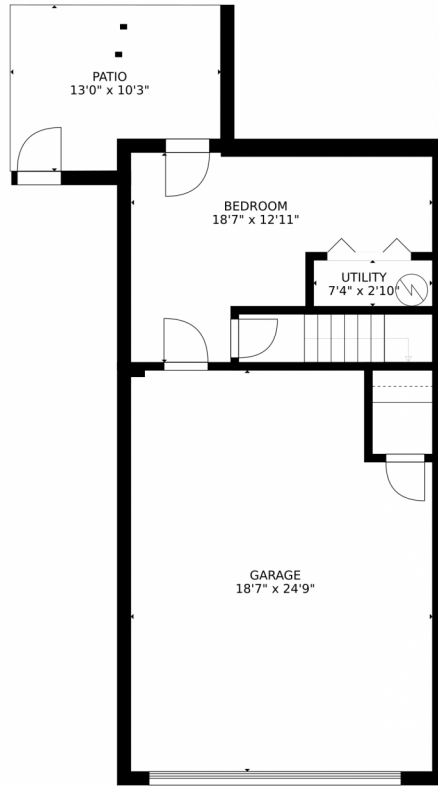
Disclaimer: Sizes and Dimensions are Approximate, Actual May Vary.



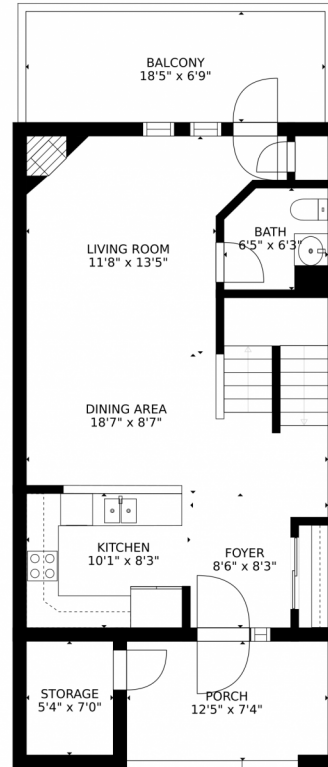
Daniel Prewitt
720-583-4848
daniel.prewitt@kw.com



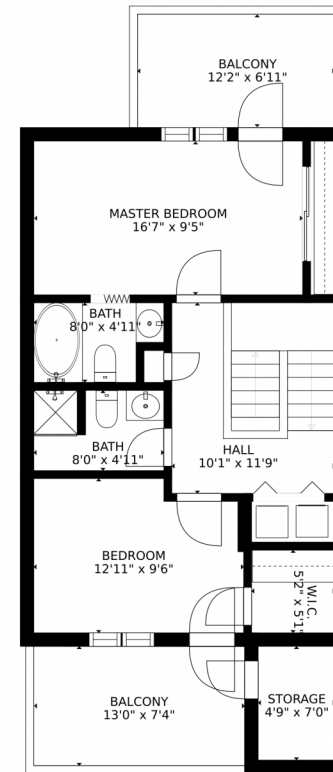
5081 Garrison Street, Wheat Ridge, CO 80033 – All Levels



FLOOR 1



FLOOR 2



FLOOR 3

GROSS INTERNAL AREA
FLOOR 1: 260 sq. ft. FLOOR 2: 602 sq. ft.
FLOOR 3: 598 sq. ft. EXCLUDED AREAS:
PATIO: 120 sq. ft. GARAGE: 437 sq. ft.
BALCONY: 307 sq. ft. PORCH: 91 sq. ft.
TOTAL: 1460 sq. ft.
SIZES AND DIMENSIONS ARE APPROXIMATE, ACTUAL MAY VARY.

Disclaimer: Sizes and Dimensions are Approximate, Actual May Vary.



Daniel Prewitt
720-583-4848
daniel.prewitt@kw.com



Scan code
for more
property
details