



11258 Ogden Drive
Northglenn, CO 80233



Single Family



2000 SQFT



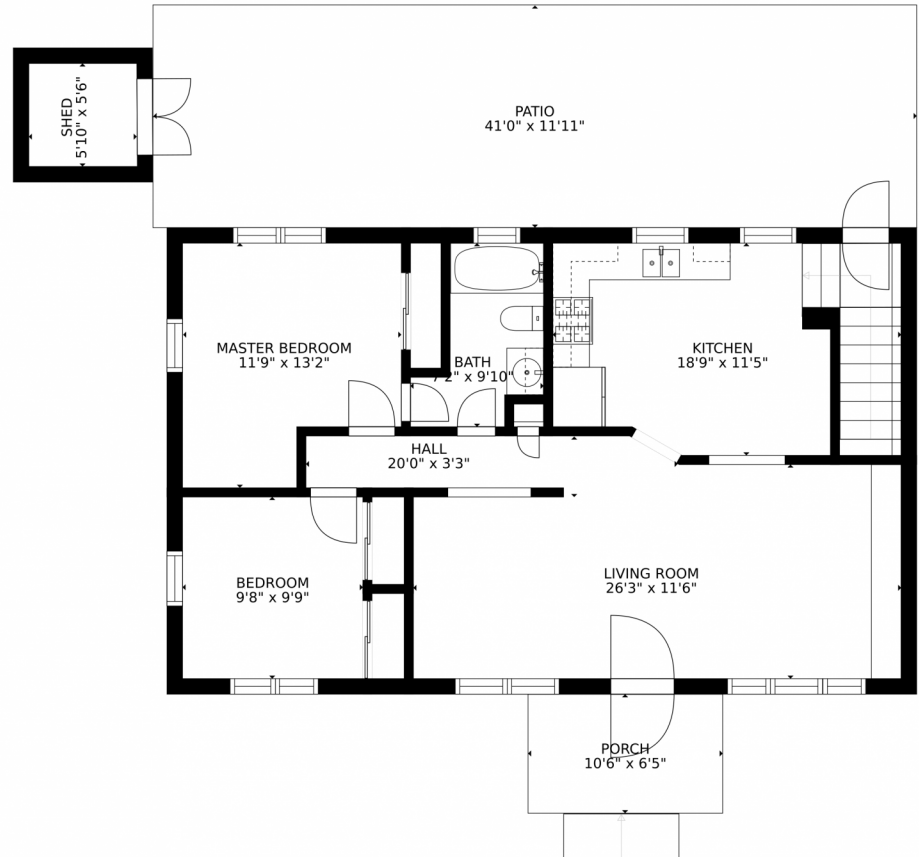
Ted Peterson Care Real Estate
303-668-5533
ted@tedarla.com



Scan code
for more
property
details



11258 Ogden Drive, Northglenn, CO 80233 – Main Level



GROSS INTERNAL AREA
FLOOR 1: 905 sq. ft, FLOOR 2: 937 sq. ft
EXCLUDED AREAS: , PATIO: 492 sq. ft
PORCH: 67 sq. ft
TOTAL: 1842 sq. ft
SIZES AND DIMENSIONS ARE APPROXIMATE, ACTUAL MAY VARY.

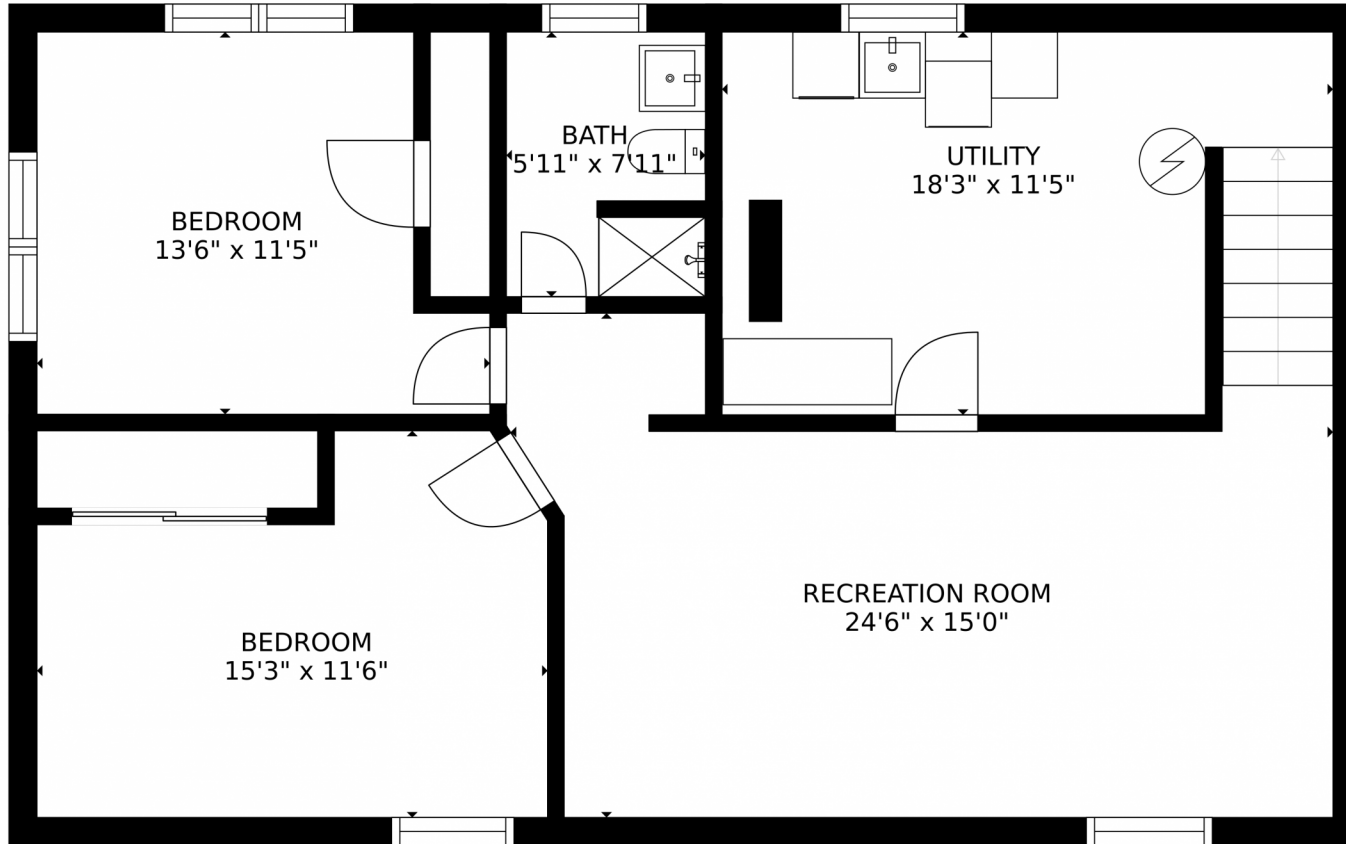
Disclaimer: Sizes and Dimensions are Approximate, Actual May Vary.



Ted Peterson Care Real Estate
303-668-5533
ted@tedarla.com



11258 Ogden Drive, Northglenn, CO 80233 – Lower Level



GROSS INTERNAL AREA
FLOOR 1: 905 sq. ft, FLOOR 2: 937 sq. ft
EXCLUDED AREAS: , PATIO: 492 sq. ft
PORCH: 67 sq. ft
TOTAL: 1842 sq. ft
SIZES AND DIMENSIONS ARE APPROXIMATE, ACTUAL MAY VARY.

Disclaimer: Sizes and Dimensions are Approximate, Actual May Vary.



Ted Peterson Care Real Estate
303-668-5533
ted@tedarla.com



11258 Ogden Drive, Northglenn, CO 80233 – All Levels



GROSS INTERNAL AREA
FLOOR 1: 905 sq. ft. FLOOR 2: 937 sq. ft.
EXCLUDED AREAS: , PATIO: 492 sq. ft.
PORCH: 67 sq. ft.
TOTAL: 1842 sq. ft.
SIZES AND DIMENSIONS ARE APPROXIMATE, ACTUAL MAY VARY.

Disclaimer: Sizes and Dimensions are Approximate, Actual May Vary.



Ted Peterson Care Real Estate
303-668-5533
ted@tedarla.com

