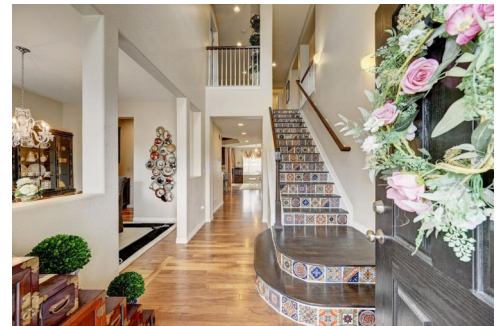




2334 Reed Grass Way
 Colorado Springs, CO 80915
COMMUNITY: Wilshire

MLS # 7401136
 PRICE \$599,000



Single Family



4979 SQFT



5 Beds



3 Baths



2 Car



0.14 Acre

PROPERTY DETAILS

Nestled in a quiet neighborhood this grand, meticulously maintained and upgraded home is ready to be yours! This two story, 5 bedroom, 3 bathroom home welcomes you from the outside with brand new stucco, multiple layers of SherLastic Elastomeric coating(weatherproofing!), new paint, gutters, railings and sealed concrete. Inside you are welcomed to a two story foyer, hardwood floors, and a gourmet kitchen with a large island- perfect for entertaining. This kitchen has new or newer stainless steel GE appliances, gas range, double convection ovens, accented with granite countertops and textured backsplash. Through the Butler's pantry (with wine refrigerator and walk-in pantry) is a formal dining room. Open floor plan also includes an informal eating area, family room with gas fireplace, main level bedroom and newly updated bathroom with walk-in shower with tile and an integrated bench. The new wood staircase is adorned by hand painted tiles from Mexico. Upstairs is the master bedroom suite with attached en suite to include a soaking tub, separate shower, granite double vanity, private toilet room, and massive walk in closet. The other 3 bedrooms are large and two out of four other bedrooms have walk in closets. Add equity to this home by finishing the unfinished basement by adding bedrooms- already roughed-in for another



Courtney Smith

719-351-6739

courtneysmith@6035realestategroup.com

Scan code
 for more
 property
 details



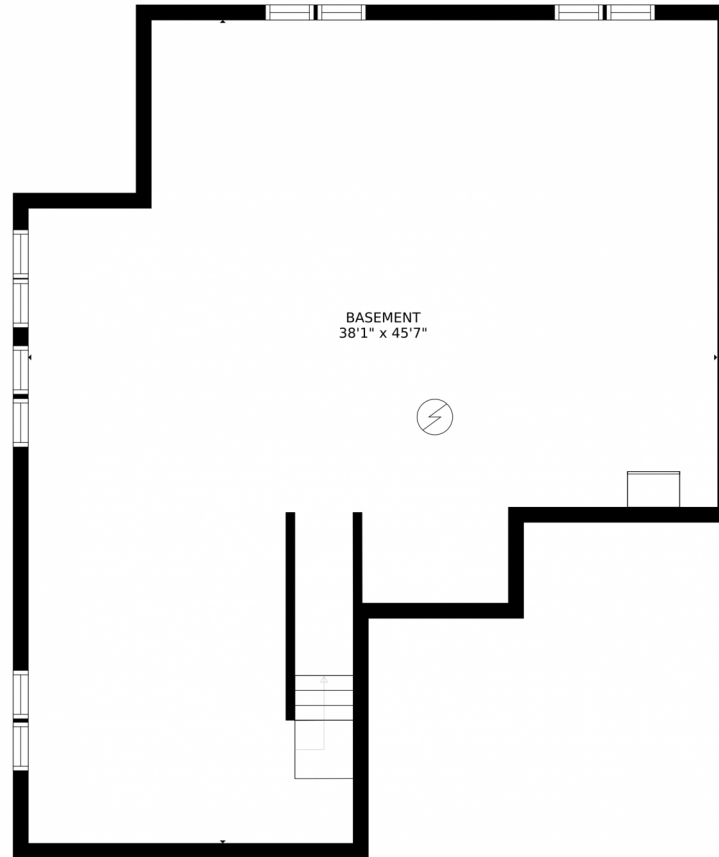
bathroom. Close to military installations, the Powers corridor, huge parks, dog park, golf courses, shopping and dining! See this beautiful home today!



Courtney Smith
719-351-6739
courtneysmith@6035realestategroup.com



2334 Reed Grass Way, Colorado Springs, CO 80915 – Lower Level



GROSS INTERNAL AREA
FLOOR 1: 1338 sq. ft, FLOOR 2: 1505 sq. ft
FLOOR 3: 1891 sq. ft, EXCLUDED AREAS:
PATIO: 124 sq. ft, PORCH: 34 sq. ft
GARAGE: 443 sq. ft
TOTAL: 4733 sq. ft
SIZES AND DIMENSIONS ARE APPROXIMATE, ACTUAL MAY VARY.

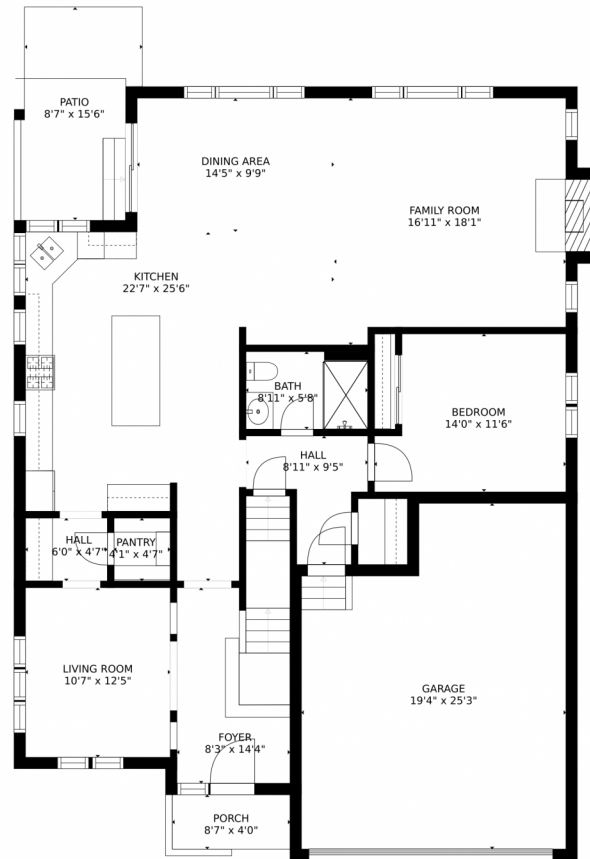
Disclaimer: Sizes and Dimensions are Approximate, Actual May Vary.



Courtney Smith
719-351-6739
courtneysmith@6035realestategroup.com

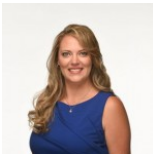


2334 Reed Grass Way, Colorado Springs, CO 80915 – Main Level



GROSS INTERNAL AREA
FLOOR 1: 1338 sq. ft. FLOOR 2: 1505 sq. ft.
FLOOR 3: 1891 sq. ft. EXCLUDED AREAS:
PATIO: 124 sq. ft. PORCH: 34 sq. ft.
GARAGE: 443 sq. ft.
TOTAL: 4733 sq. ft.
SIZES AND DIMENSIONS ARE APPROXIMATE, ACTUAL MAY VARY.

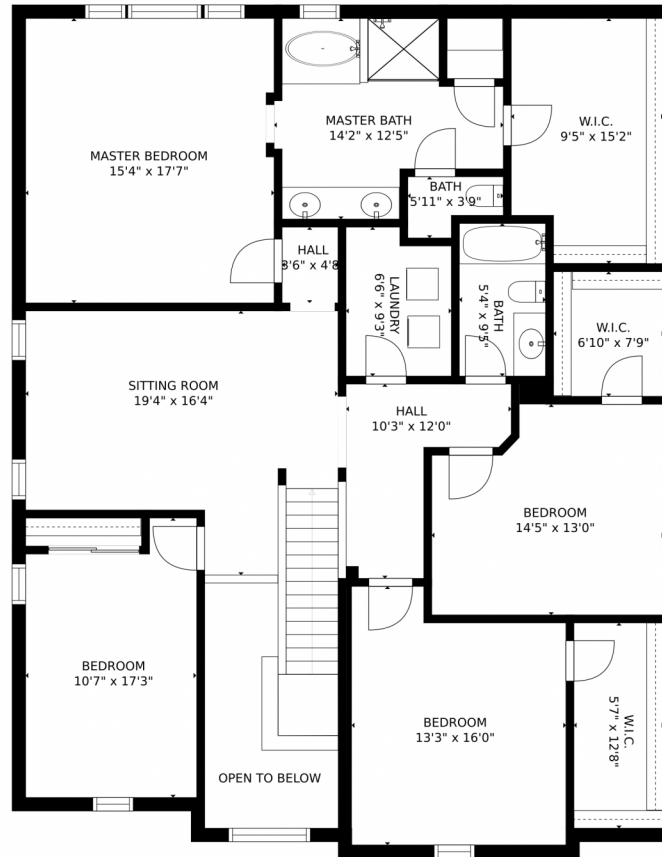
Disclaimer: Sizes and Dimensions are Approximate, Actual May Vary.



Courtney Smith
719-351-6739
courtneysmith@6035realestategroup.com

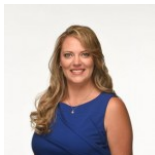


2334 Reed Grass Way, Colorado Springs, CO 80915 – 2nd Level



GROSS INTERNAL AREA
FLOOR 1: 1338 sq. ft. FLOOR 2: 1505 sq. ft.
FLOOR 3: 1891 sq. ft. EXCLUDED AREAS:
PATIO: 124 sq. ft. PORCH: 34 sq. ft.
GARAGE: 443 sq. ft.
TOTAL: 4733 sq. ft.
SIZES AND DIMENSIONS ARE APPROXIMATE, ACTUAL MAY VARY.

Disclaimer: Sizes and Dimensions are Approximate, Actual May Vary.



Courtney Smith
719-351-6739
courtneysmith@6035realestategroup.com



2334 Reed Grass Way, Colorado Springs, CO 80915 – All Levels



GROSS INTERNAL AREA
FLOOR 1: 1338 sq. ft. FLOOR 2: 1505 sq. ft.
FLOOR 3: 1891 sq. ft. EXCLUDED AREAS:
PATIO: 124 sq. ft. PORCH: 34 sq. ft.
GARAGE: 443 sq. ft.
TOTAL: 4733 sq. ft.
SIZES AND DIMENSIONS ARE APPROXIMATE, ACTUAL MAY VARY.

Disclaimer: Sizes and Dimensions are Approximate, Actual May Vary.



Courtney Smith
719-351-6739
courtneysmith@6035realestategroup.com



Scan code
for more
property
details