



6193 East 167th Avenue
Brighton, CO 80602

PRICE \$875,000



Single Family



3036 SQFT



4 Beds



3/1 Baths



3 Car

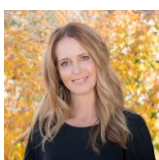


1 Acre

PROPERTY DETAILS

Terri Ellerington <terri@elevated-team.com>
1:22 PM (16 minutes ago)

Spectacular Home in Eagle Shadows on one acre with stunning views of the mountains and lake. Tucked back behind mature trees this stunning home boasts beautiful hardwood floors on the main level. Inviting entry with patio perfect for morning coffee. Spacious kitchen with all appliances, pantry and eat in kitchen opening to patio. Granite counter, wood floors and island. Formal dining room and living room with vaulted ceilings and tons of natural light. Large private family room with gas fireplace and laundry area. Lower walk out basement features a bedroom, bathroom and Rec room. Master has its own floor! Double closets, 5 pc master bath. Upper level features loft space and 2 additional bedrooms and full bath. HUGE 12' X 35" deck with bonus volleyball court and 2 horseshoe pits. Enjoy summer evenings on the deck watching the migration of birds on the lake.



Terri Ellerington

303-929-8116

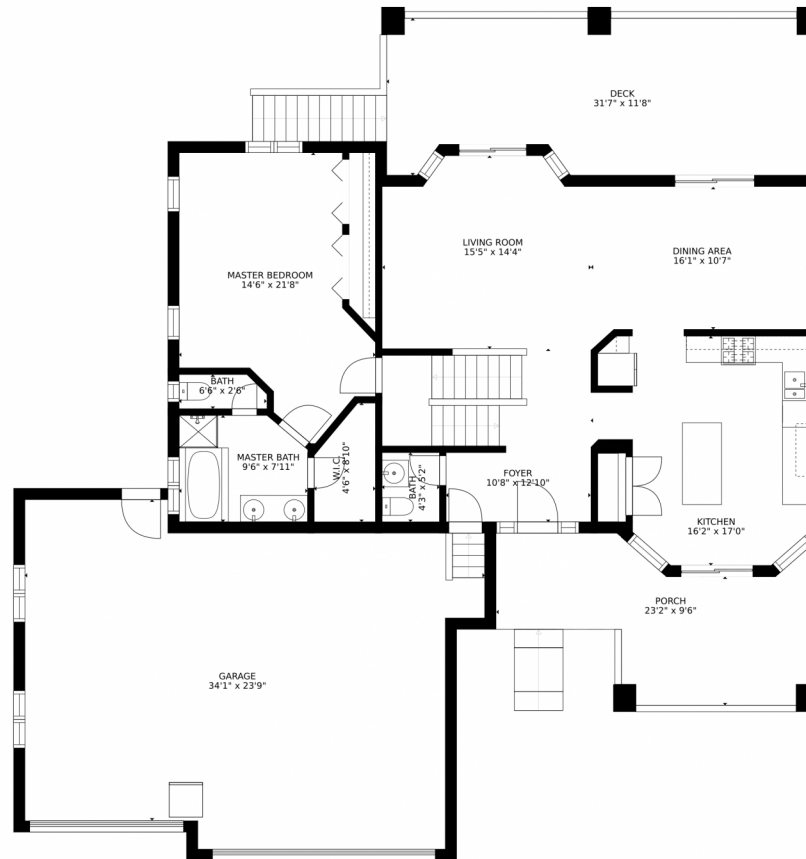
terri@elevated-team.com

<https://www.remax.com/real-estate-agents/terri-ellerington-louisville-co/10205130>

Scan code
for more
property
details



6193 East 167th Avenue, Brighton, CO 80602 — Main Level



GROSS INTERNAL AREA
FLOOR 1: 1130 sq. ft, FLOOR 2: 1250 sq. ft
FLOOR 3: 579 sq. ft, EXCLUDED AREAS:
PATIO: 726 sq. ft, DECK: 346 sq. ft
PORCH: 203 sq. ft, GARAGE: 746 sq. ft
TOTAL: 2960 sq. ft
SIZES AND DIMENSIONS ARE APPROXIMATE, ACTUAL MAY VARY.

Disclaimer: Sizes and Dimensions are Approximate, Actual May Vary.



Terri Ellerington

303-929-8116

terri@elevated-team.com

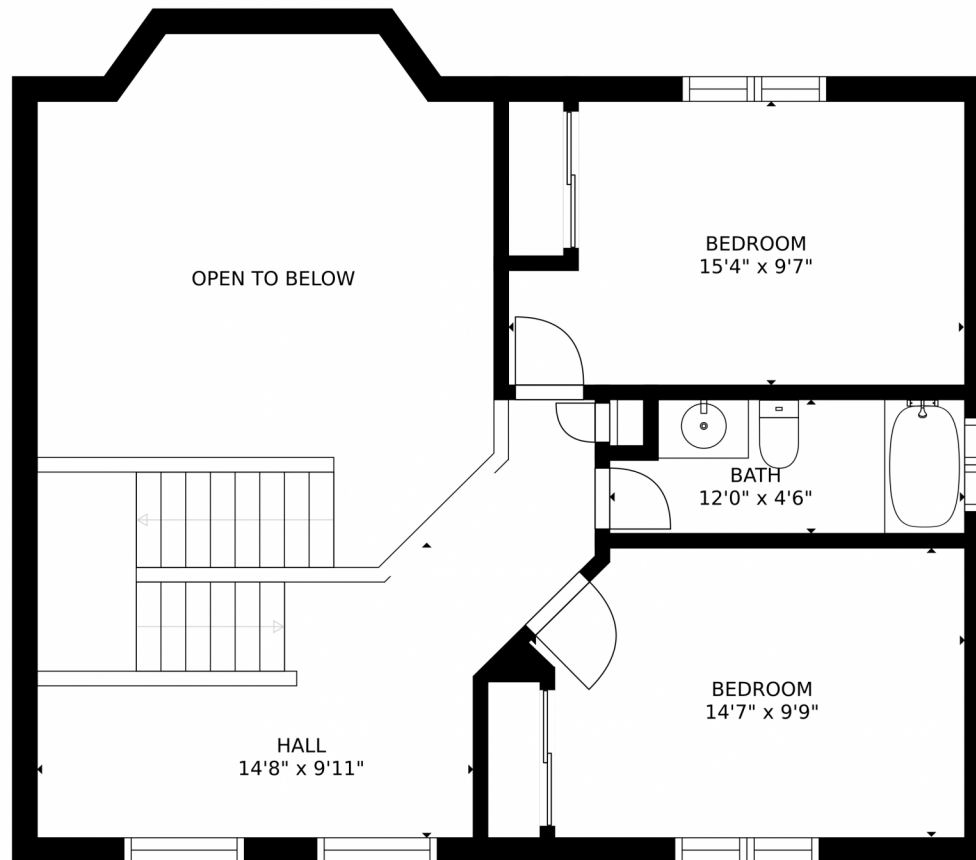
<https://www.remax.com/real-estate-agents/terri-ellerington-louisville-co/102051301>



Scan code
for more
property
details



6193 East 167th Avenue, Brighton, CO 80602 — Upper Level



GROSS INTERNAL AREA
FLOOR 1: 1130 sq. ft, FLOOR 2: 1250 sq. ft
FLOOR 3: 579 sq. ft, EXCLUDED AREAS:
PATIO: 726 sq. ft, DECK: 346 sq. ft
PORCH: 203 sq. ft, GARAGE: 746 sq. ft
TOTAL: 2960 sq. ft
SIZES AND DIMENSIONS ARE APPROXIMATE, ACTUAL MAY VARY.

Disclaimer: Sizes and Dimensions are Approximate, Actual May Vary.

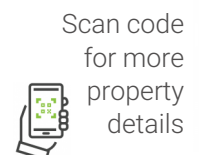


Terri Ellerington

303-929-8116

terri@elevated-team.com

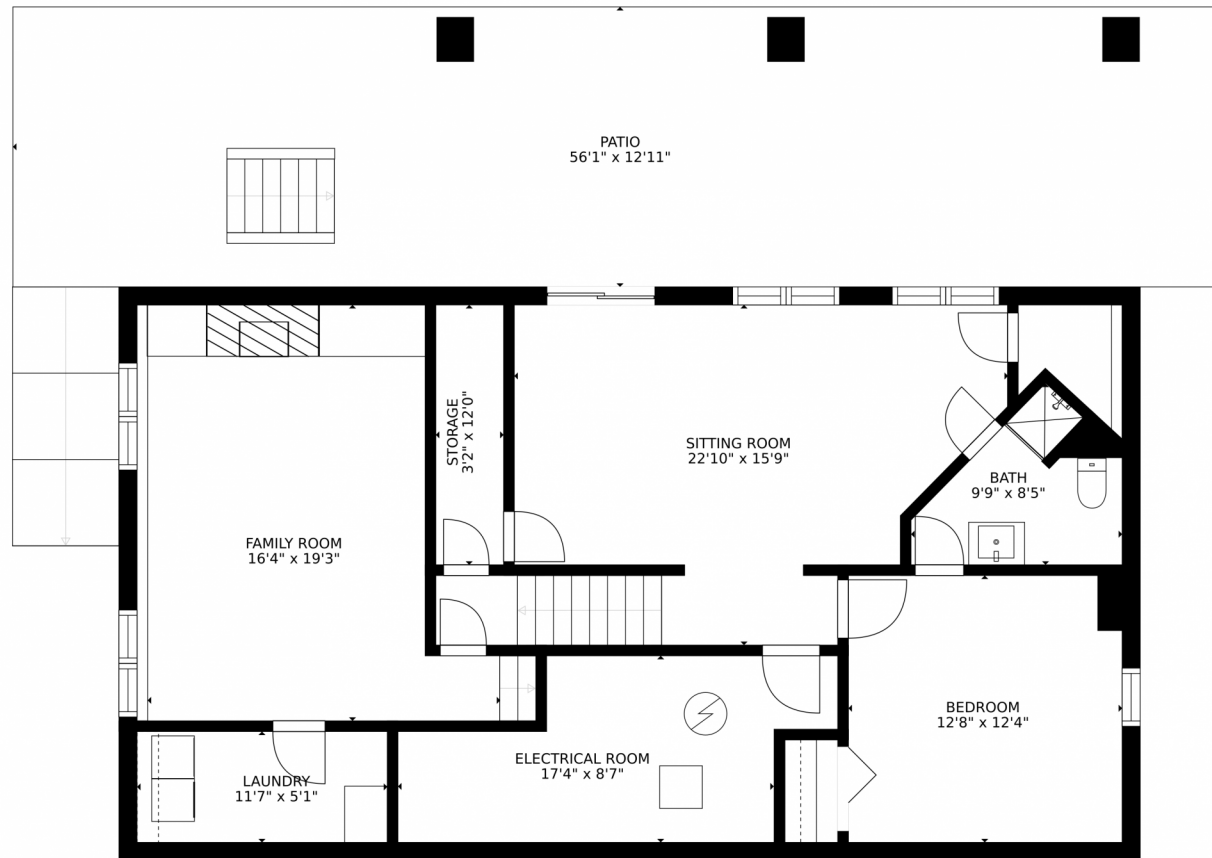
<https://www.remax.com/real-estate-agents/terri-ellerington-louisville-co/102051301>



Scan code
for more
property
details



6193 East 167th Avenue, Brighton, CO 80602 – Lower Level



GROSS INTERNAL AREA
FLOOR 1: 1130 sq. ft, FLOOR 2: 1250 sq. ft
FLOOR 3: 579 sq. ft, EXCLUDED AREAS:
PATIO: 726 sq. ft, DECK: 346 sq. ft
PORCH: 203 sq. ft, GARAGE: 746 sq. ft
TOTAL: 2960 sq. ft
SIZES AND DIMENSIONS ARE APPROXIMATE, ACTUAL MAY VARY.

Disclaimer: Sizes and Dimensions are Approximate, Actual May Vary.



Terri Ellerington

303-929-8116

terri@elevated-team.com

<https://www.remax.com/real-estate-agents/terri-ellerington-louisville-co/102051301>



Scan code
for more
property
details



6193 East 167th Avenue, Brighton, CO 80602 — All Levels



GROSS INTERNAL AREA
FLOOR 1: 1130 sq. ft, FLOOR 2: 1250 sq. ft
FLOOR 3: 579 sq. ft, EXCLUDED AREAS:
PATIO: 726 sq. ft, DECK: 346 sq. ft
PORCH: 203 sq. ft, GARAGE: 746 sq. ft
TOTAL: 2960 sq. ft
SIZES AND DIMENSIONS ARE APPROXIMATE, ACTUAL MAY VARY.

Disclaimer: Sizes and Dimensions are Approximate, Actual May Vary.



Terri Ellerington

303-929-8116

terri@elevated-team.com

<https://www.remax.com/real-estate-agents/terri-ellerington-louisville-co/102051301>



Scan code
for more
property
details

