



Single Family



3547 SQFT



Taylor Haas

303-665-7368

taylorh@coloradorpm.com

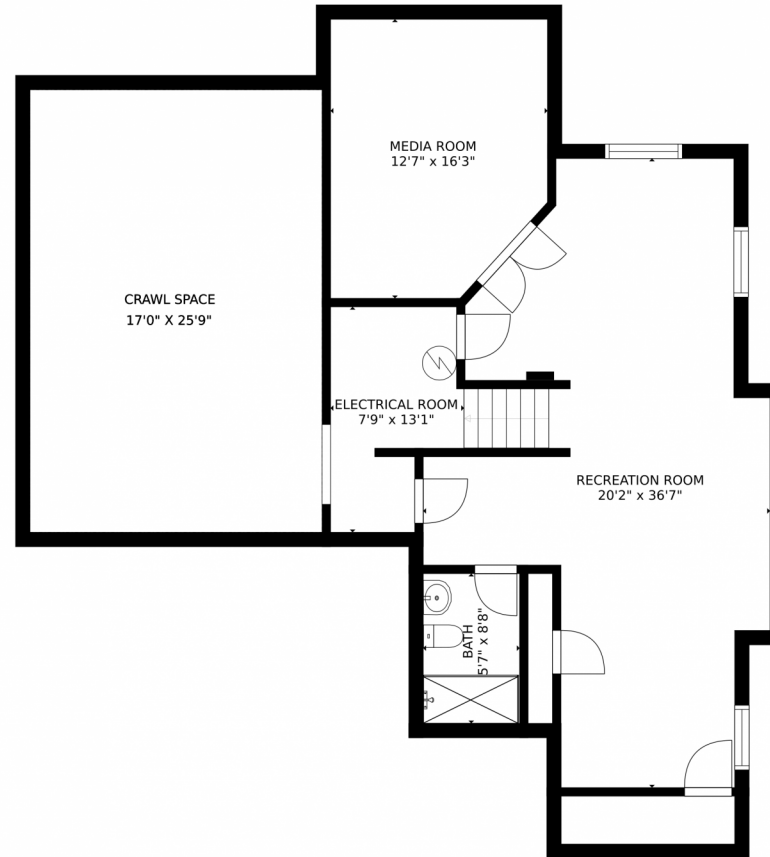
<https://www.coloradorpm.com/available-rental-properties-denver>



Scan code
for more
property
details



6055 South Telluride Circle, Aurora, CO 80016 – Lower Level



GROSS INTERNAL AREA
FLOOR 1: 923 sq. ft, FLOOR 2: 1387 sq. ft
FLOOR 3: 1125 sq. ft, EXCLUDED AREAS:
REDUCED HEADROOM BELOW 1.5M: 436 sq. ft, DECK: 208 sq. ft
GARAGE: 554 sq. ft
TOTAL: 3435 sq. ft
SIZES AND DIMENSIONS ARE APPROXIMATE, ACTUAL MAY VARY.

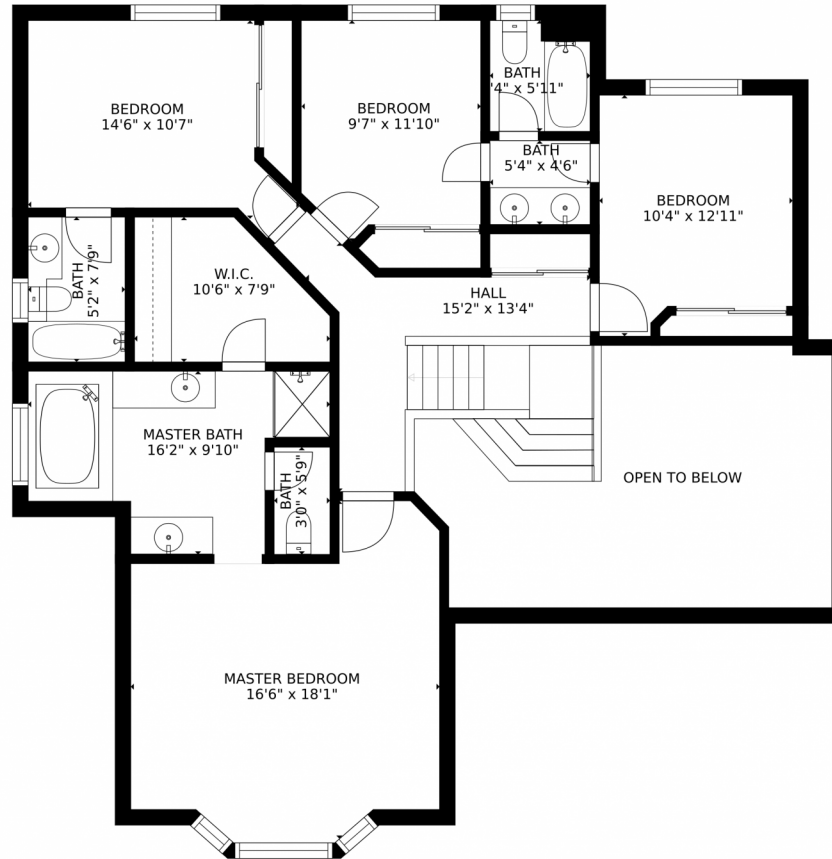
Disclaimer: Sizes and Dimensions are Approximate, Actual May Vary.



Taylor Haas
303-665-7368
taylorh@coloradorpm.com
<https://www.coloradorpm.com/available-rental-properties-denver>



6055 South Telluride Circle, Aurora, CO 80016 – 2nd Floor



GROSS INTERNAL AREA
FLOOR 1: 1359 sq. ft, FLOOR 2: 1387 sq. ft
FLOOR 3: 1125 sq. ft, EXCLUDED AREAS:
DECK: 208 sq. ft, GARAGE: 554 sq. ft
TOTAL: 3872 sq. ft
SIZES AND DIMENSIONS ARE APPROXIMATE, ACTUAL MAY VARY.

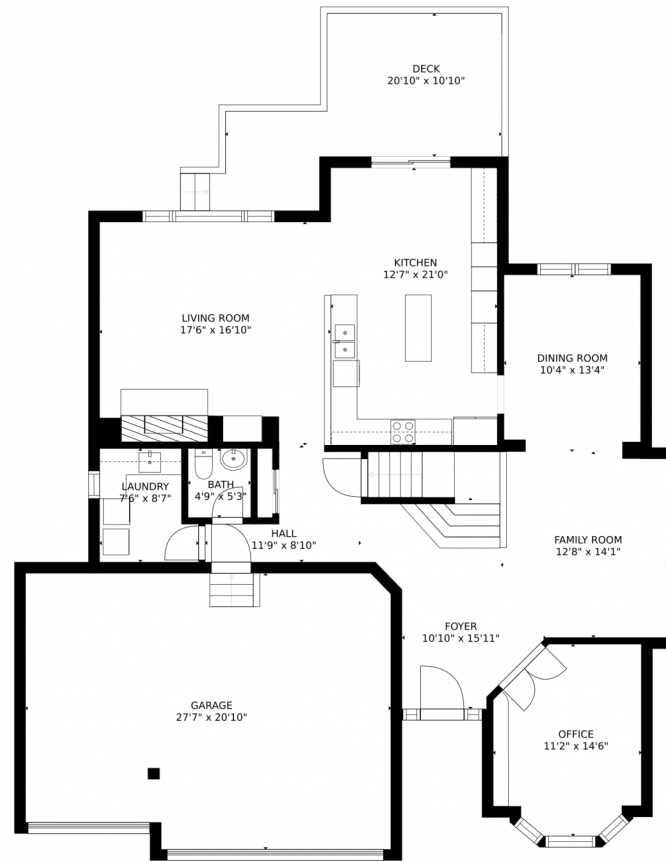
Disclaimer: Sizes and Dimensions are Approximate, Actual May Vary.



Taylor Haas
303-665-7368
taylorh@coloradorpm.com
<https://www.coloradorpm.com/available-rental-properties-denver>



6055 South Telluride Circle, Aurora, CO 80016 – Main Floor



GROSS INTERNAL AREA
FLOOR 1: 923 sq. ft. FLOOR 2: 1387 sq. ft.
FLOOR 3: 1125 sq. ft. EXCLUDED AREAS:
REDUCED HEADROOM BELOW 1.5M: 436 sq. ft. DECK: 208 sq. ft.
GARAGE: 554 sq. ft.
TOTAL: 3435 sq. ft.
SIZES AND DIMENSIONS ARE APPROXIMATE, ACTUAL MAY VARY.

Disclaimer: Sizes and Dimensions are Approximate, Actual May Vary.



Taylor Haas

303-665-7368

taylorh@coloradorpm.com

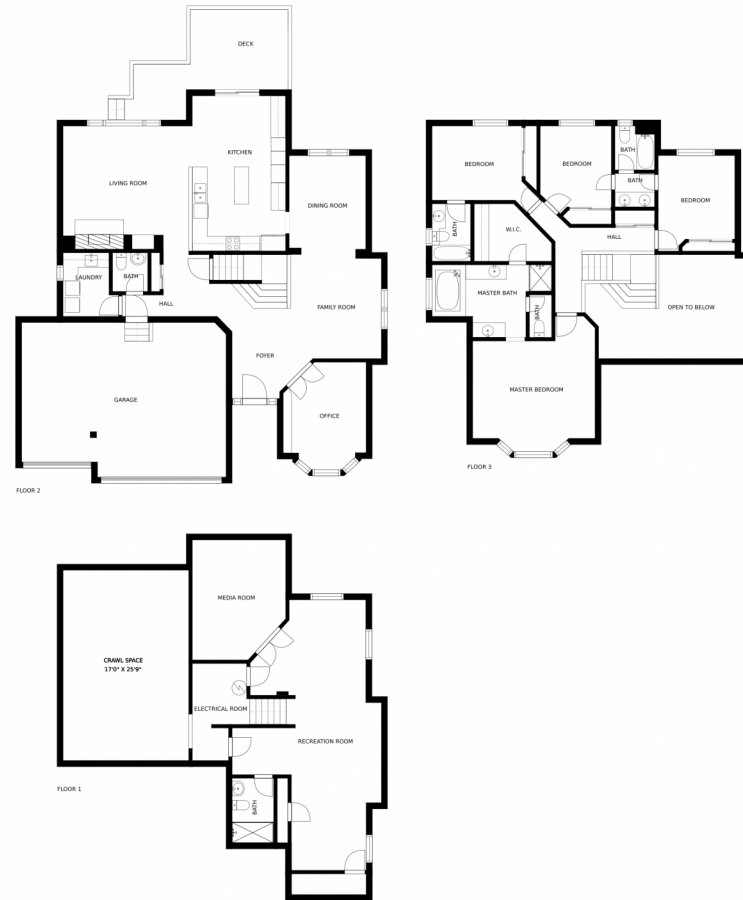
<https://www.coloradorpm.com/available-rental-properties-denver>



Scan code
for more
property
details



6055 South Telluride Circle, Aurora, CO 80016 – All Floors



SIZES AND DIMENSIONS ARE APPROXIMATE, ACTUAL MAY VARY.

Disclaimer: Sizes and Dimensions are Approximate, Actual May Vary.



Taylor Haas
303-665-7368
taylorh@coloradorpm.com
<https://www.coloradorpm.com/available-rental-properties-denver>

