



406 South Sherman Street
Denver, CO 80209



Single Family



1308 SQFT

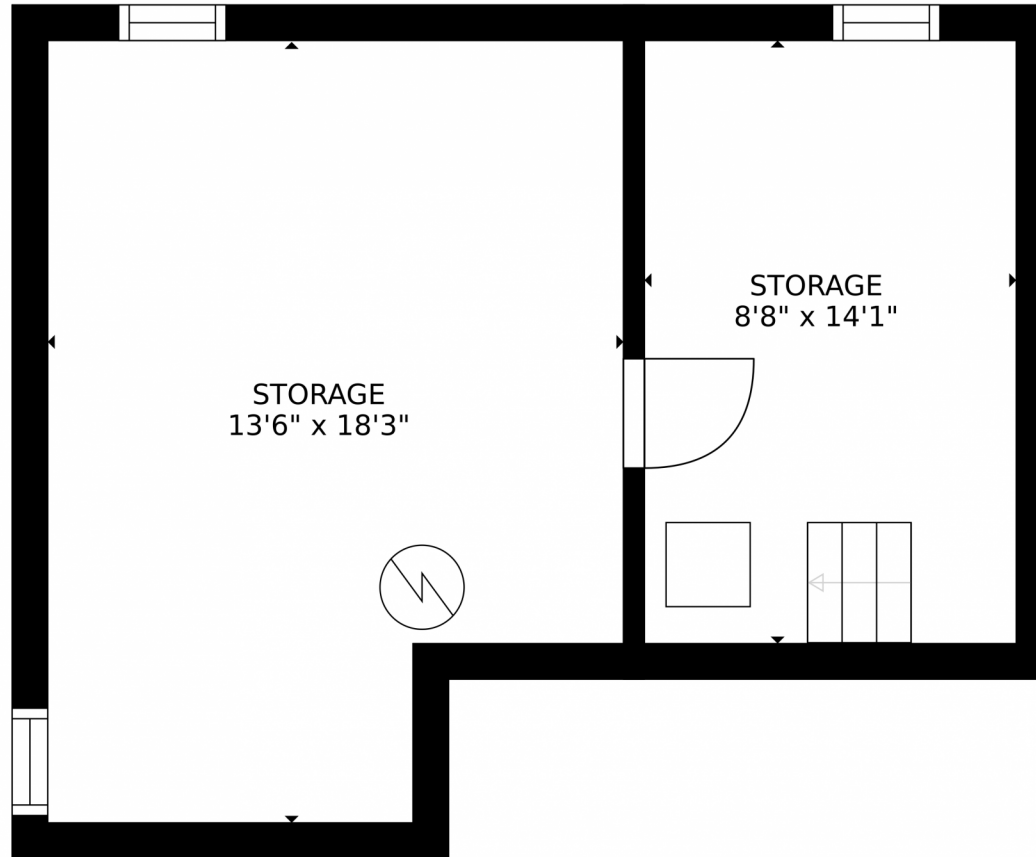


Megan Waymire
720-220-5217
megan@meganwaymire.com



Scan code
for more
property
details





GROSS INTERNAL AREA
FLOOR 1: 356 sq. ft, FLOOR 2: 1068 sq. ft
FLOOR 3: 410 sq. ft, EXCLUDED AREAS:
PATIO: 804 sq. ft, PORCH: 127 sq. ft
TOTAL: 1834 sq. ft
SIZES AND DIMENSIONS ARE APPROXIMATE, ACTUAL MAY VARY.

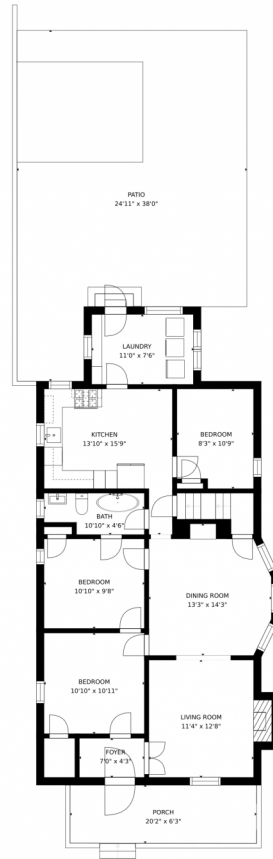
Disclaimer: Sizes and Dimensions are Approximate, Actual May Vary.



Megan Waymire
720-220-5217
megan@meganwaymire.com



406 South Sherman Street, Denver, CO 80209 – Main Floor



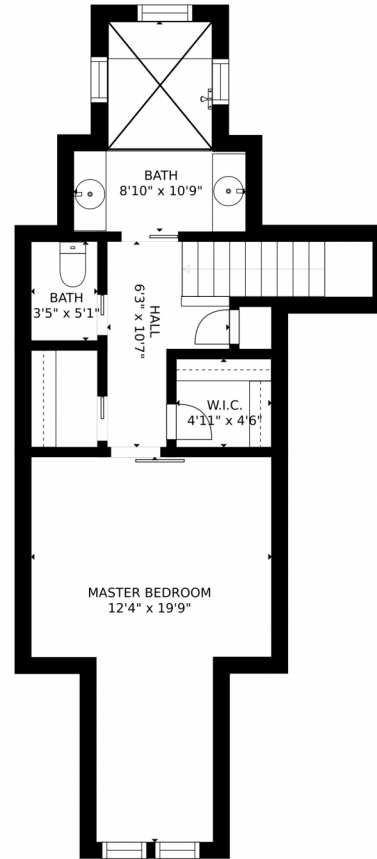
GROSS INTERNAL AREA
FLOOR 1: 356 sq. ft, FLOOR 2: 1068 sq. ft
FLOOR 3: 410 sq. ft, EXCLUDED AREAS:
PATIO: 804 sq. ft, PORCH: 127 sq. ft
TOTAL: 1834 sq. ft
SIZES AND DIMENSIONS ARE APPROXIMATE, ACTUAL MAY VARY.

Disclaimer: Sizes and Dimensions are Approximate, Actual May Vary.



Megan Waymire
720-220-5217
megan@meganwaymire.com





GROSS INTERNAL AREA
FLOOR 1: 356 sq. ft, FLOOR 2: 1068 sq. ft
FLOOR 3: 410 sq. ft, EXCLUDED AREAS:
PATIO: 804 sq. ft, PORCH: 127 sq. ft
TOTAL: 1834 sq. ft
SIZES AND DIMENSIONS ARE APPROXIMATE, ACTUAL MAY VARY.

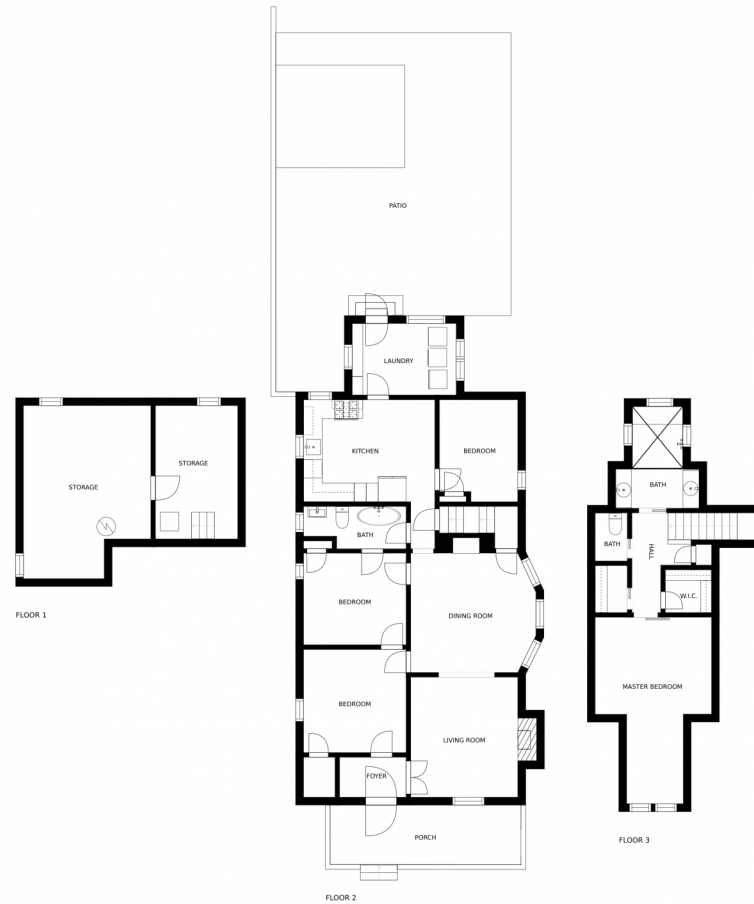
Disclaimer: Sizes and Dimensions are Approximate, Actual May Vary.



Megan Waymire
720-220-5217
megan@meganwaymire.com



406 South Sherman Street, Denver, CO 80209 – All Floors



SIZES AND DIMENSIONS ARE APPROXIMATE, ACTUAL MAY VARY.

Disclaimer: Sizes and Dimensions are Approximate, Actual May Vary.



Megan Waymire
720-220-5217
megan@meganwaymire.com

