



20272 E Lake Avenue  
 Centennial, CO 80016  
 COMMUNITY: Greenfield

MLS # 5258841  
 PRICE \$750,000



Single Family



5113 SQFT



5 Beds



4 Baths



3 Car



0.25 Acre

## PROPERTY DETAILS

Welcome Home to the Greenfield community of desirable Southeast Aurora! Arguably the most turnkey ready home in the area with many projects already completed to include many new fixtures, remastered flooring, and new blinds along with a newer roof, many recently replaced windows, and exterior paint. A stunning 2-Story grand porch greets you showcasing brick-lain pillars and a lovely red accent door. Come on into the open and inviting main level of the home flawlessly flowing from the formal living and dining areas into the family great room at the back of the home making this space ideal for entertaining. Upstairs the owner's suite is your personal oasis boasting elegany tray ceilings and a luxurious private en-suite bath. Your next Summer BBQ will be smashing in this glorious backyard and outdoor living space featuring an expansive upper-level deck, covered lower-level patio, water feature and mature landscaping with plenty of space for lounge and play. Miles of trails connect you throughout this perfectly maintained neighborhood to the duck pond, clubhouse, and beyond to the Piney Creek Trail and Cherry Creek Pathways. Make a splash and meet your neighbors this Summer at the community swimming pool and tennis courts or at one of the many community events hosted at Greenfield for all major holidays including back to school and so much more. Three community parks include acres of open space, a basketball court, and a playground. Residents of



**Tatyana Sturm**  
 720-350-5909  
 tatyana@exitrealttydtc.com  
 https://thestorckteam.com



Scan code  
 for more  
 property  
 details



Greenfield have access to the award-winning Cherry Creek School District along with Grandview HS and Falcon Creek MS within walking distance. Enjoy endless dining, shopping, and entertainment options in the Southlands Outdoor Retail District featuring a full AMC Dine-In Movie Theater, abundant casual dining options along with higher-end restaurant options as well, and so many shopping choices. The Southlands Mall also features a robust courtyard area with a mini splash park in the Summer and a skating rink in the Winter.



**Tatyana Sturm**

720-350-5909

tatyana@exitrealtydtc.com

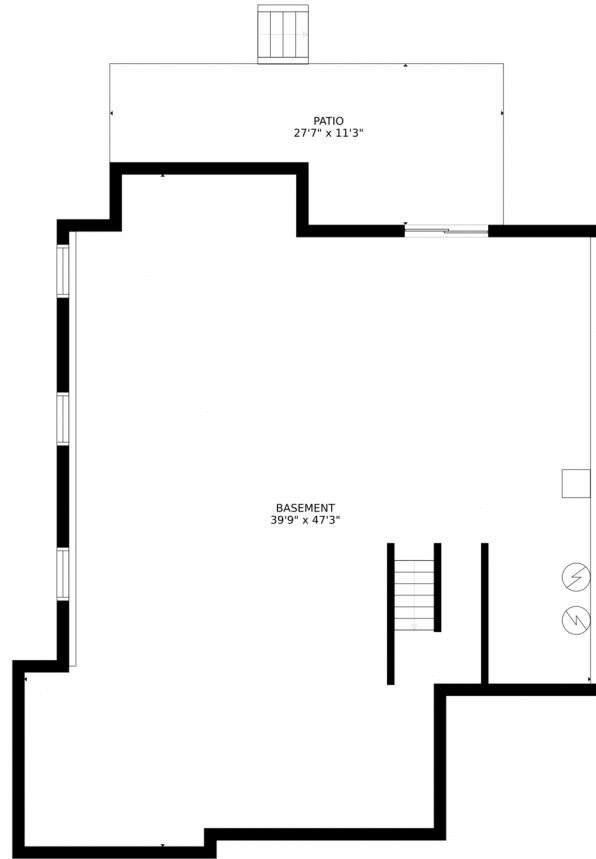
<https://thestorckteam.com>



Scan code  
for more  
property  
details



20272 E Lake Avenue, Centennial, CO 80016 – Lower Level



GROSS INTERNAL AREA  
FLOOR 1: 1531 sq. ft, FLOOR 2: 1819 sq. ft  
FLOOR 3: 1627 sq. ft, EXCLUDED AREAS:  
PATIO: 252 sq. ft, DECK: 265 sq. ft  
PORCH: 198 sq. ft, GARAGE: 621 sq. ft  
TOTAL: 4977 sq. ft  
SIZES AND DIMENSIONS ARE APPROXIMATE, ACTUAL MAY VARY.

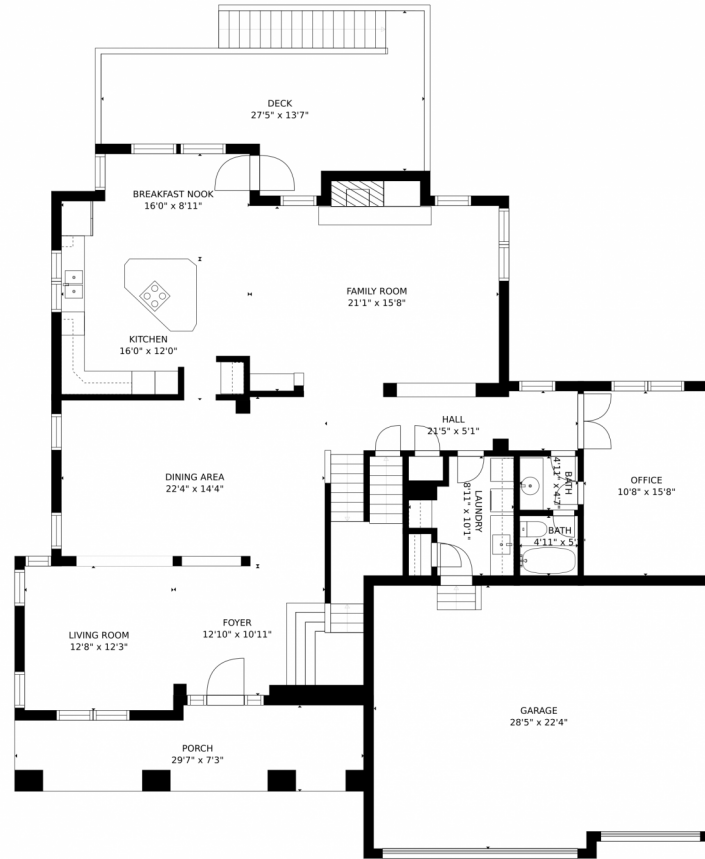
Disclaimer: Sizes and Dimensions are Approximate, Actual May Vary.



**Tatyana Sturm**  
720-350-5909  
tatyana@exitrealtydtc.com  
<https://thestorckteam.com>



# 20272 E Lake Avenue, Centennial, CO 80016 — Main Level



GROSS INTERNAL AREA  
FLOOR 1: 1531 sq. ft. FLOOR 2: 1819 sq. ft.  
FLOOR 3: 1627 sq. ft. EXCLUDED AREAS:  
PATIO: 252 sq. ft. DECK: 265 sq. ft.  
PORCH: 198 sq. ft. GARAGE: 621 sq. ft.  
TOTAL: 4977 sq. ft.  
SIZES AND DIMENSIONS ARE APPROXIMATE, ACTUAL MAY VARY.

Disclaimer: Sizes and Dimensions are Approximate, Actual May Vary.

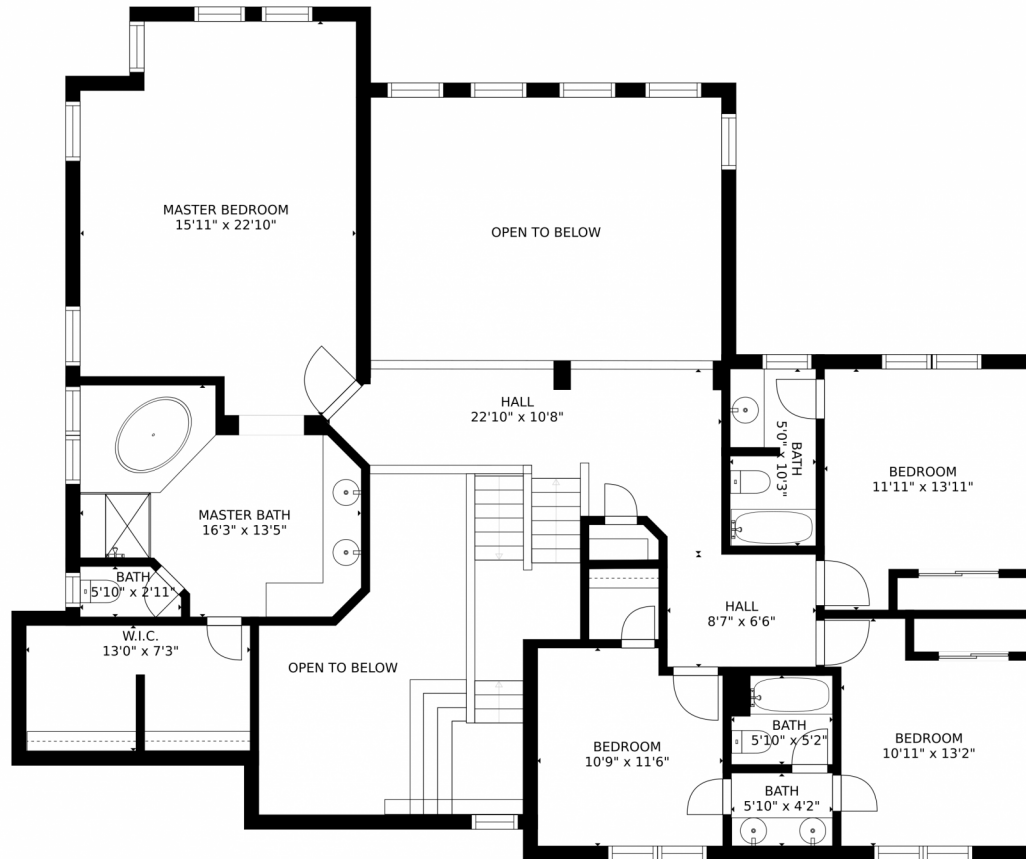


**Tatyana Sturm**  
720-350-5909  
tatyana@exitrealttydc.com  
<https://thestorckteam.com>



Scan code  
for more  
property  
details

20272 E Lake Avenue, Centennial, CO 80016 – 2nd Level



GROSS INTERNAL AREA  
FLOOR 1: 1531 sq. ft. FLOOR 2: 1819 sq. ft.  
FLOOR 3: 1627 sq. ft. EXCLUDED AREAS:  
PATIO: 252 sq. ft. DECK: 265 sq. ft.  
PORCH: 198 sq. ft. GARAGE: 621 sq. ft.  
TOTAL: 4977 sq. ft.  
SIZES AND DIMENSIONS ARE APPROXIMATE, ACTUAL MAY VARY.

Disclaimer: Sizes and Dimensions are Approximate, Actual May Vary.



**Tatyana Sturm**  
720-350-5909  
tatyana@exitrealttydc.com  
<https://thestorckteam.com>

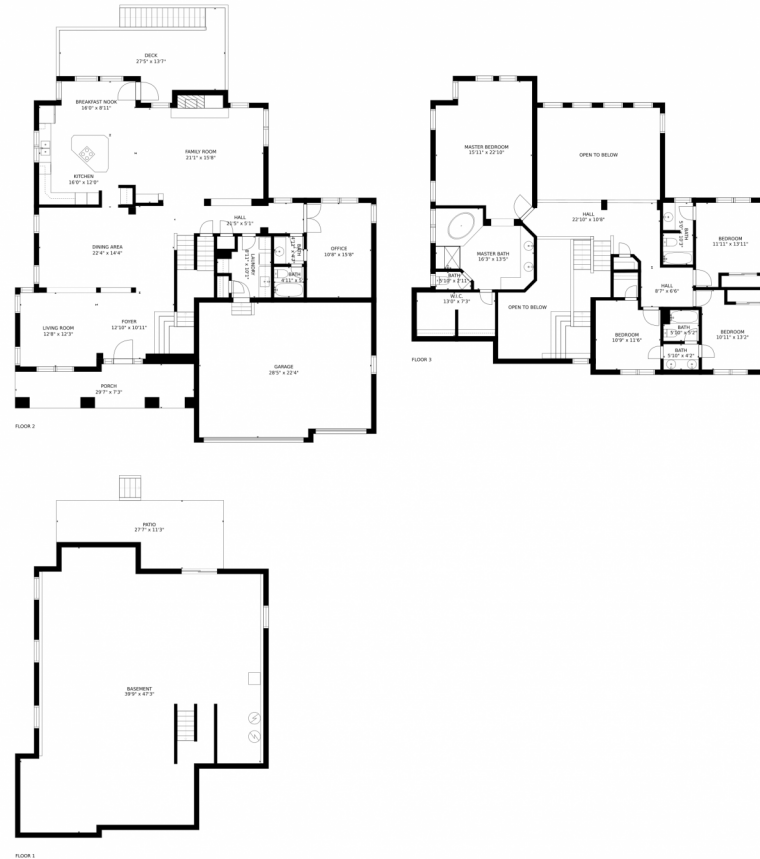


Scan code for more property details





# 20272 E Lake Avenue, Centennial, CO 80016 – All Levels



GROSS INTERNAL AREA  
FLOOR 1: 1531 sq. ft, FLOOR 2: 1819 sq. ft  
FLOOR 3: 1627 sq. ft, EXCLUDED AREAS:  
PATIO: 252 sq. ft, DECK: 265 sq. ft  
PORCH: 198 sq. ft, GARAGE: 621 sq. ft  
TOTAL: 4977 sq. ft  
SIZES AND DIMENSIONS ARE APPROXIMATE, ACTUAL MAY VARY.

Disclaimer: Sizes and Dimensions are Approximate, Actual May Vary.



**Tatyana Sturm**  
720-350-5909  
tatyana@exitrealttydtc.com  
<https://thestorckteam.com>

