





 Single Family

 2232 SQFT

 3 Beds

 2 Baths

 1 Car

 0.14 Acre

PROPERTY DETAILS

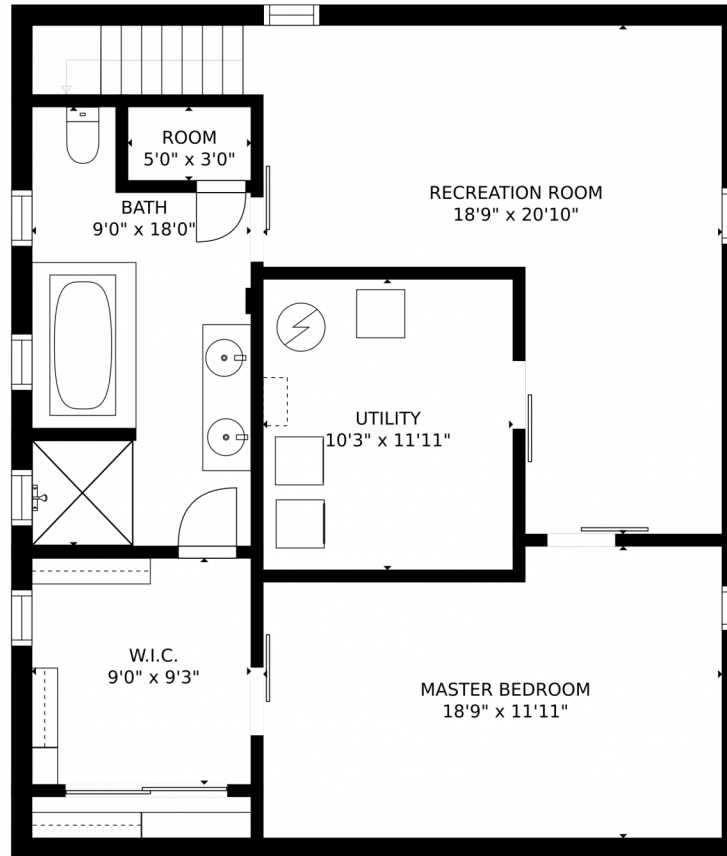
Classic 3 bed 2 bath Platte Park Bungalow on 6250 sqft lot!



Brad Hajim
303-895-5242
bradhajim@gmail.com



1361 South Sherman Street, Denver, CO 80210 – Lower Level



GROSS INTERNAL AREA
FLOOR 1: 939 sq. ft, FLOOR 2: 1077 sq. ft
EXCLUDED AREAS: , PATIO: 362 sq. ft
PORCH: 123 sq. ft, GARAGE: 200 sq. ft
TOTAL: 2016 sq. ft
SIZES AND DIMENSIONS ARE APPROXIMATE, ACTUAL MAY VARY.

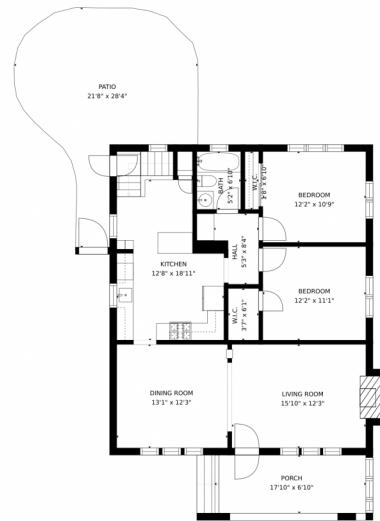
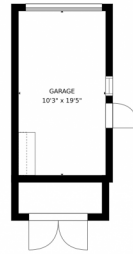
Disclaimer: Sizes and Dimensions are Approximate, Actual May Vary.



Brad Hajim
303-895-5242
bradhajim@gmail.com



1361 South Sherman Street, Denver, CO 80210 – Main Level



GROSS INTERNAL AREA
FLOOR 1: 939 sq. ft, FLOOR 2: 1077 sq. ft
EXCLUDED AREAS: , PATIO: 362 sq. ft
PORCH: 123 sq. ft, GARAGE: 200 sq. ft
TOTAL: 2016 sq. ft
SIZES AND DIMENSIONS ARE APPROXIMATE, ACTUAL MAY VARY.

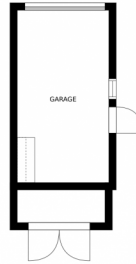
Disclaimer: Sizes and Dimensions are Approximate, Actual May Vary.



Brad Hajim
303-895-5242
bradhajim@gmail.com



1361 South Sherman Street, Denver, CO 80210 – All Floors



SIZES AND DIMENSIONS ARE APPROXIMATE, ACTUAL MAY VARY.

Disclaimer: Sizes and Dimensions are Approximate, Actual May Vary.



Brad Hajim
303-895-5242
bradhajim@gmail.com

