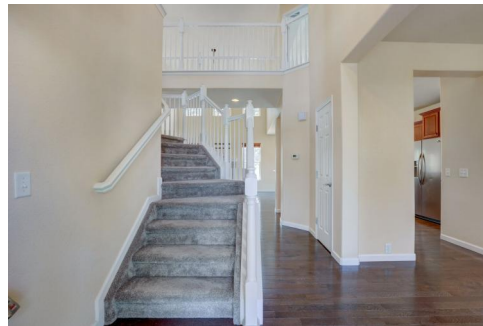




2601 Gray Wolf Loop  
 Broomfield, CO 80023  
 COMMUNITY: Anthem Highlands

MLS # 3861554  
 PRICE \$695,000



Single Family



3703 SQFT



4 Beds



4 Baths



3 Car



0.28 Acre

## PROPERTY DETAILS

This beautiful home in Anthem Highlands will impress you from the moment you arrive. Beautifully landscaped corner lot with lush grass, trees, garden beds, and more can be seen throughout the .25+ acre lot. The covered entryway leads into a elegant foyer with high ceilings and architectural accents. The formal dining space connects the main level living spaces and modern open concept floor plan with almost new oak hardwood floors. The sprawling kitchen will host all occasions, highlighted by slab granite counters, breakfast bar, full pantry, stainless steel appliances, and generous cabinet and counter space. An eat in kitchen area overlooks the back stamped concrete patio. Vaulted ceilings extend upwards from the living room to the upper level loft. Additional main floor features include bedroom/office, 3/4 bath, and laundry room. The upper level is very spacious. A open loft retreat keeps you feeling connected to the other areas of this large home. It has several potential uses, and it connects 3 upstairs bedrooms. The master suite gets great natural light, has partial mountain views, tray ceilings, double door entry, a large well lit walk in closet, and a luxurious 5 piece bathroom with double sink vanity. A basement adds 1,200 additional square feet to the home with an office, 3/4 bath, a family room with a built-in entertainment center alcove & a wet bar. Massive 3 bay garage with long driveway. Fenced corner lot. The master-planned community offers lots of recreational



**Jason Cassidy**  
 720-220-6964  
 jason@coloradorpm.com



Scan code  
 for more  
 property  
 details



amenities such as a clubhouse, tennis and volleyball courts, pool, kids playground, walking/biking trails, and parks. Easy access to E470, DIA, I25, Denver/Boulder, & Highway 36. Property is priced based on estimated repair costs. See Broker remarks and Supplements for details. New photos and video will be updated prior to the active listing status on 7/1/2021. Showings begin 7/1/2021.



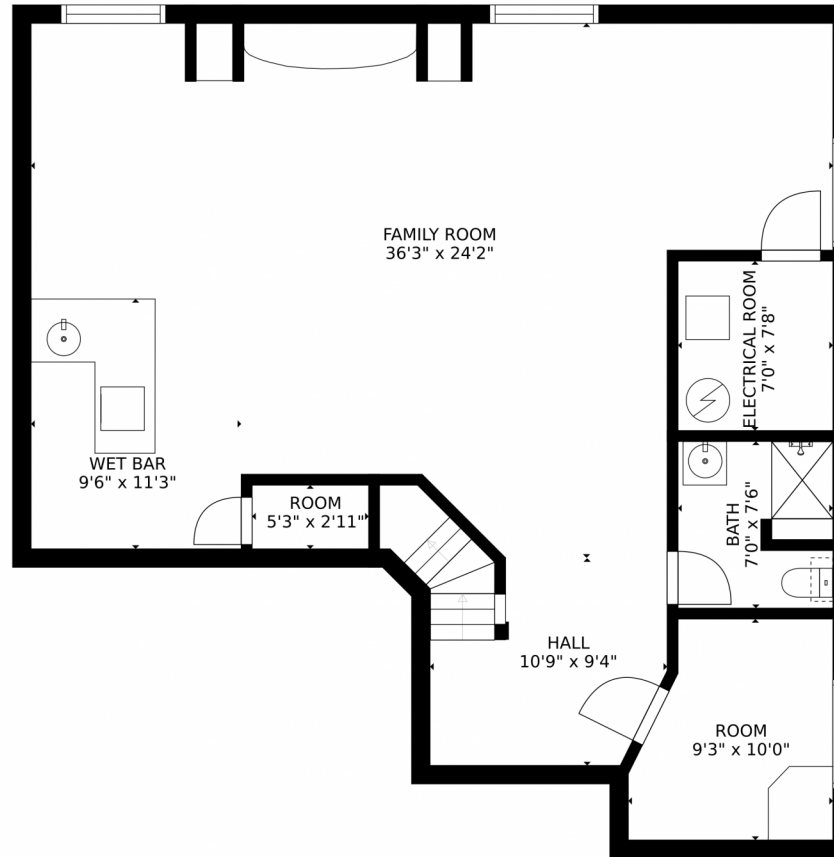
**Jason Cassidy**  
720-220-6964  
jason@coloradorpm.com



Scan code  
for more  
property  
details



# 2601 Gray Wolf Loop, Broomfield, CO 80023 – Lower Level



GROSS INTERNAL AREA  
FLOOR 1: 1071 sq. ft. FLOOR 2: 1154 sq. ft.  
FLOOR 3: 1536 sq. ft. EXCLUDED AREAS:  
PATIO: 519 sq. ft. PORCH: 66 sq. ft.  
GARAGE: 575 sq. ft.  
TOTAL: 3761 sq. ft.  
SIZES AND DIMENSIONS ARE APPROXIMATE, ACTUAL MAY VARY.

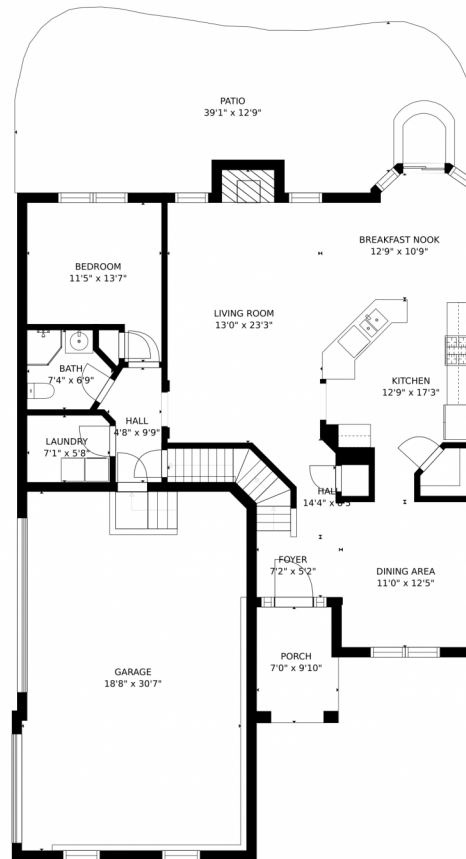
Disclaimer: Sizes and Dimensions are Approximate, Actual May Vary.



**Jason Cassidy**  
720-220-6964  
jason@coloradorpm.com



# 2601 Gray Wolf Loop, Broomfield, CO 80023 – Main Level



GROSS INTERNAL AREA  
FLOOR 1: 1071 sq. ft. FLOOR 2: 1154 sq. ft.  
FLOOR 3: 1536 sq. ft. EXCLUDED AREAS:  
PATIO: 519 sq. ft. PORCH: 66 sq. ft.  
GARAGE: 575 sq. ft.  
TOTAL: 3761 sq. ft.  
SIZES AND DIMENSIONS ARE APPROXIMATE, ACTUAL MAY VARY.

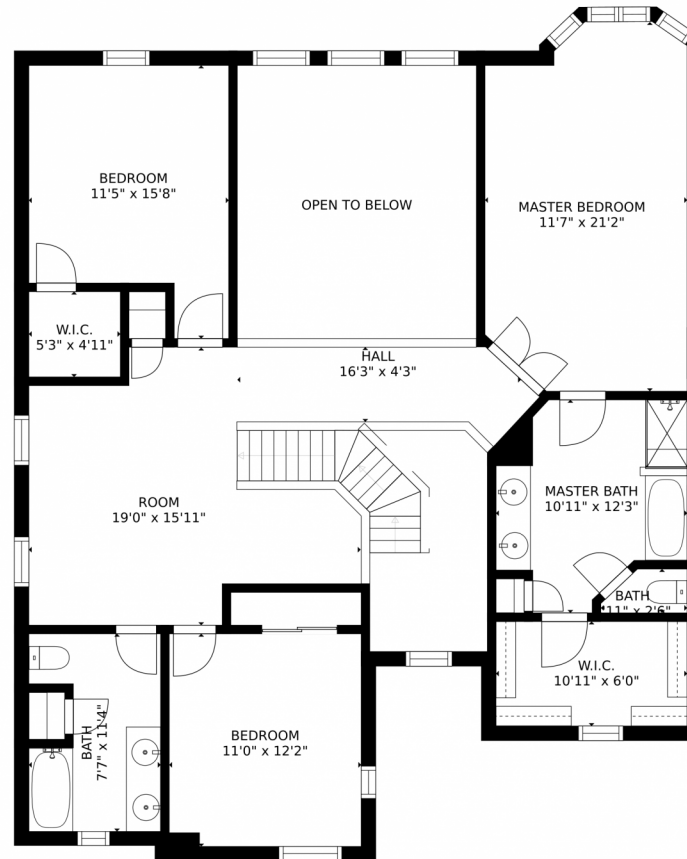
Disclaimer: Sizes and Dimensions are Approximate, Actual May Vary.



**Jason Cassidy**  
720-220-6964  
jason@coloradorpm.com



# 2601 Gray Wolf Loop, Broomfield, CO 80023 – 2nd Story



GROSS INTERNAL AREA  
FLOOR 1: 1071 sq. ft. FLOOR 2: 1154 sq. ft.  
FLOOR 3: 1536 sq. ft. EXCLUDED AREAS:  
PATIO: 519 sq. ft. PORCH: 66 sq. ft.  
GARAGE: 575 sq. ft.  
TOTAL: 3761 sq. ft.  
SIZES AND DIMENSIONS ARE APPROXIMATE, ACTUAL MAY VARY.

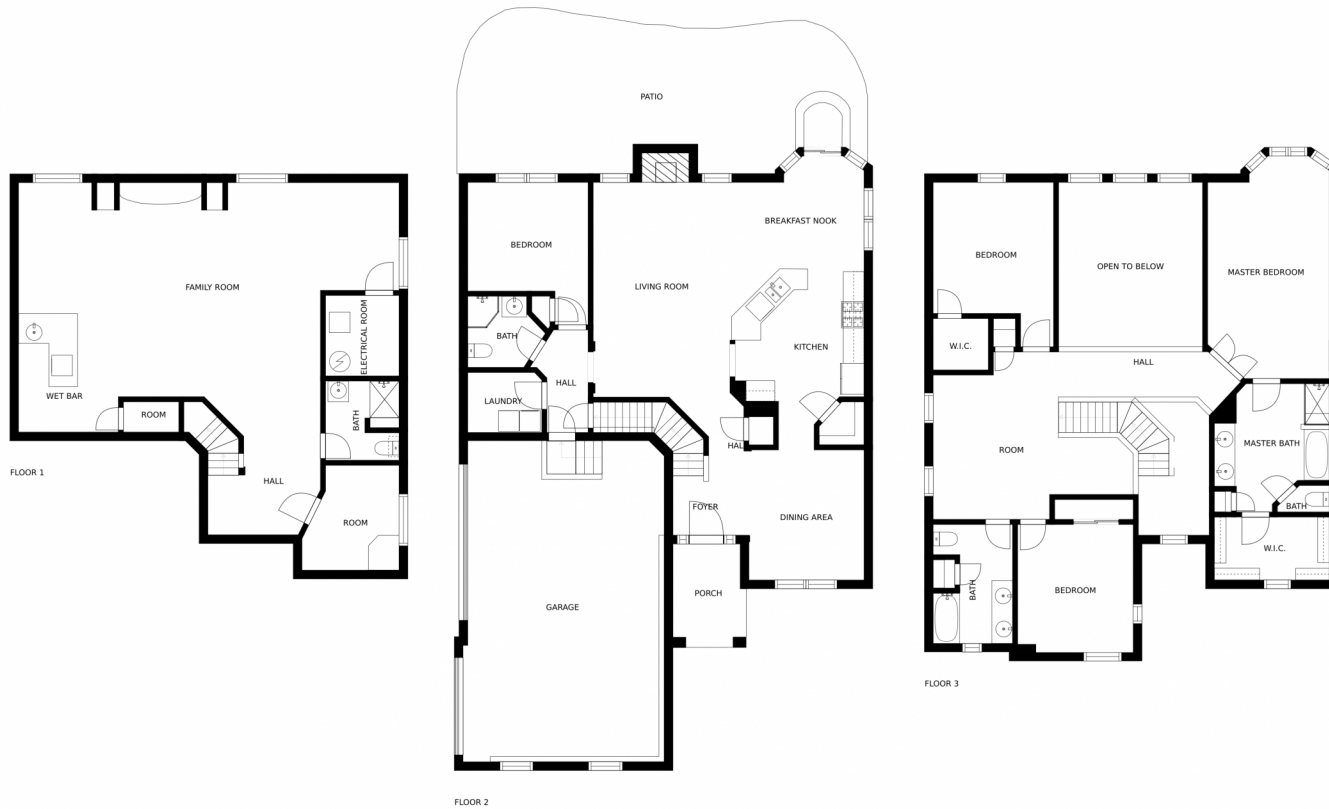
Disclaimer: Sizes and Dimensions are Approximate, Actual May Vary.



**Jason Cassidy**  
720-220-6964  
jason@coloradorpm.com



# 2601 Gray Wolf Loop, Broomfield, CO 80023 – All Floors



SIZES AND DIMENSIONS ARE APPROXIMATE, ACTUAL MAY VARY.

Disclaimer: Sizes and Dimensions are Approximate, Actual May Vary.



**Jason Cassidy**  
720-220-6964  
jason@coloradorpm.com



Scan code  
for more  
property  
details