



2245 S Nile Street
Lakewood, CO 80228
COMMUNITY: Solterra

MLS # 5869739

PRICE
\$1,200,000



Single Family



3901 SQFT



4 Beds



3/1 Baths



3 Car



0.23 Acre

PROPERTY DETAILS

Situated on a elevated 0.23 acre corner lot, this fabulous Cardel home in Solterra backs & sides to community walking path & open space offering unobstructed views of the mountains and Red Rocks amphitheater! This home is perfectly set up for outdoor entertaining with a charming front patio, covered side patio with 5 person hot tub & outdoor fireplace, covered rear patio overlooking the back yard and expansive multi-level paver stone patio with pergola, built in fire pit and views in every direction. Inside you will find refinished solid hardwood floors, plantation shutters, large office, guest bath, dining room/breakfast nook, kitchen & family room on the main level. Upstairs features the spacious primary suite with walk-in closet & 5pc bath and incredible mountain views. 2 additional bedrooms share a Jack-n-Jill bath plus both have their own separate vanities. The 4th upper floor bedroom has its own private en suite full bath as well. The unfinished basement offers 9ft ceilings and provides ample storage space or can be finished for future expansion. Fantastic location is just 15 minutes from downtown Denver, 5 minutes to the mountains with easy access to I-70 and C-470. Solterra is a coveted neighborhood surrounded by miles of trails and open space offering exceptional biking and hiking opportunities at Red Rocks, Green Mountain and Bear Creek Lake. The community also boast the award winning Retreat clubhouse with Infinity edge pool &



Paul D. Andrews

720-270-1306

andrews.realtor@gmail.com

<https://www.greaterdenverhomesite.com/paul-andrews/>



Scan code
for more
property
details



numerous social events. Rarely does a home come available with these kind of views and privacy in Solterra - don't miss out on this unique opportunity!

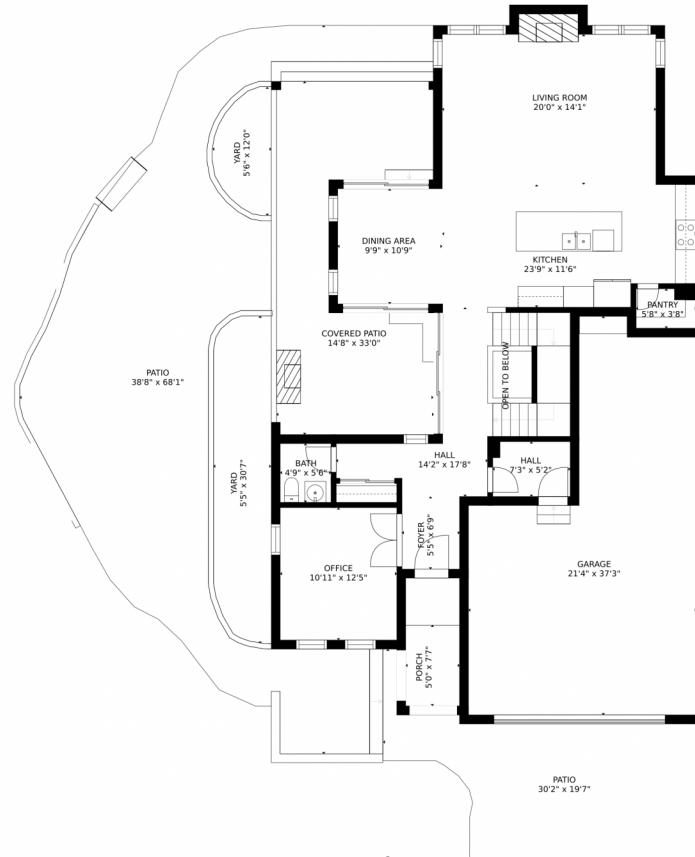


Paul D. Andrews
720-270-1306
andrews.realtor@gmail.com
<https://www.greaterdenverhomesite.com/paul-andrews/>



Scan code
for more
property
details





GROSS INTERNAL AREA
FLOOR 1: 1027 sq. ft. FLOOR 2: 1151 sq. ft
FLOOR 3: 1385 sq. ft. EXCLUDED AREAS:
PATIO: 1555 sq. ft. PORCH: 38 sq. ft
GARAGE: 599 sq. ft
TOTAL: 3563 sq. ft
SIZES AND DIMENSIONS ARE APPROXIMATE, ACTUAL MAY VARY.

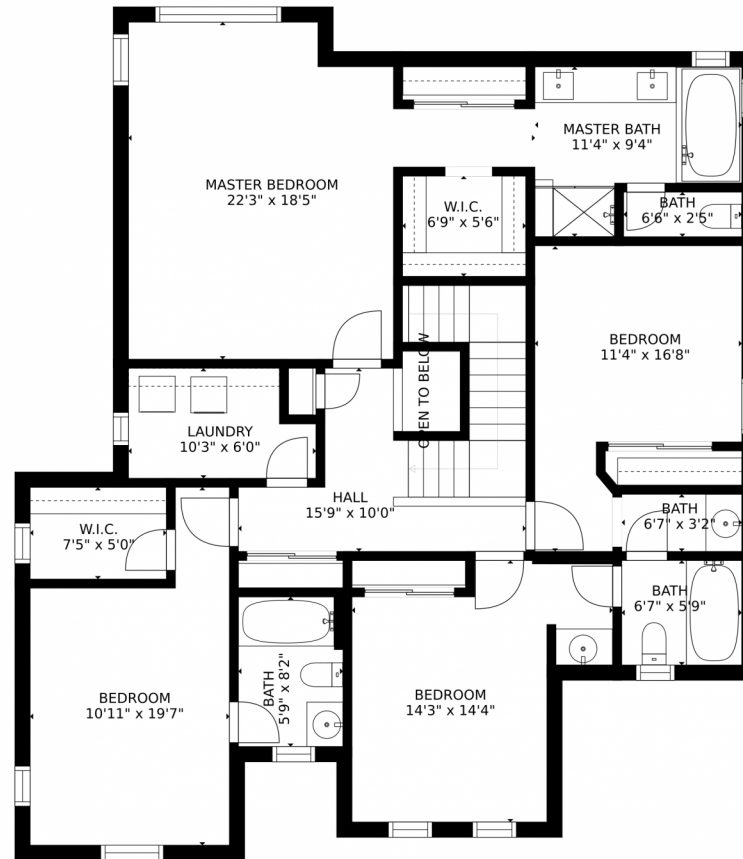
Disclaimer: Sizes and Dimensions are Approximate, Actual May Vary.



Paul D. Andrews
720-270-1306
andrews.realtor@gmail.com
<https://www.greaterdenverhomesite.com/paul-andrews/>



Scan code
for more
property
details



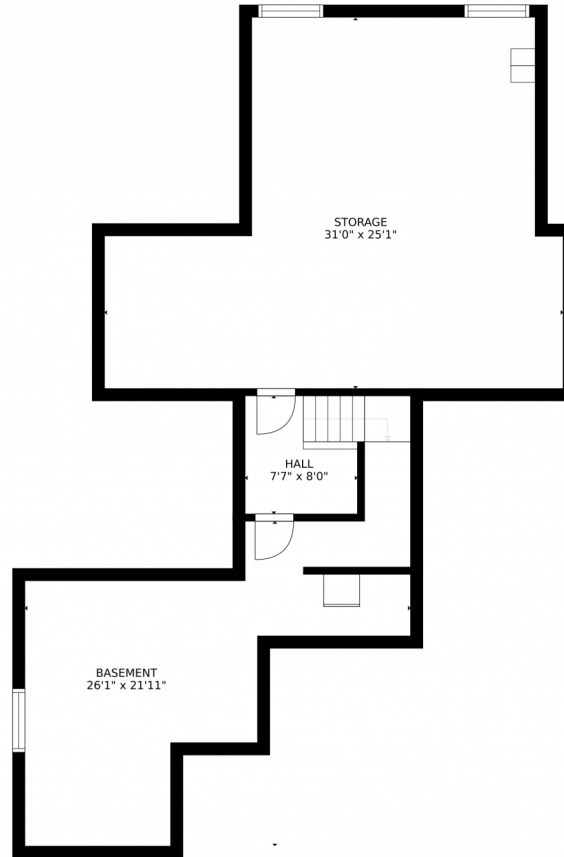
GROSS INTERNAL AREA
FLOOR 1: 1027 sq. ft. FLOOR 2: 1151 sq. ft.
FLOOR 3: 1385 sq. ft. EXCLUDED AREAS:
PATIO: 1555 sq. ft. PORCH: 38 sq. ft.
GARAGE: 599 sq. ft.
TOTAL: 3563 sq. ft.
SIZES AND DIMENSIONS ARE APPROXIMATE, ACTUAL MAY VARY.

Disclaimer: Sizes and Dimensions are Approximate, Actual May Vary.



Paul D. Andrews
720-270-1306
andrews.realtor@gmail.com
<https://www.greaterdenverhomesite.com/paul-andrews/>





GROSS INTERNAL AREA
FLOOR 1: 1027 sq. ft. FLOOR 2: 1151 sq. ft.
FLOOR 3: 1385 sq. ft. EXCLUDED AREAS:
PATIO: 1555 sq. ft. PORCH: 38 sq. ft.
GARAGE: 599 sq. ft.
TOTAL: 3563 sq. ft.
SIZES AND DIMENSIONS ARE APPROXIMATE, ACTUAL MAY VARY.

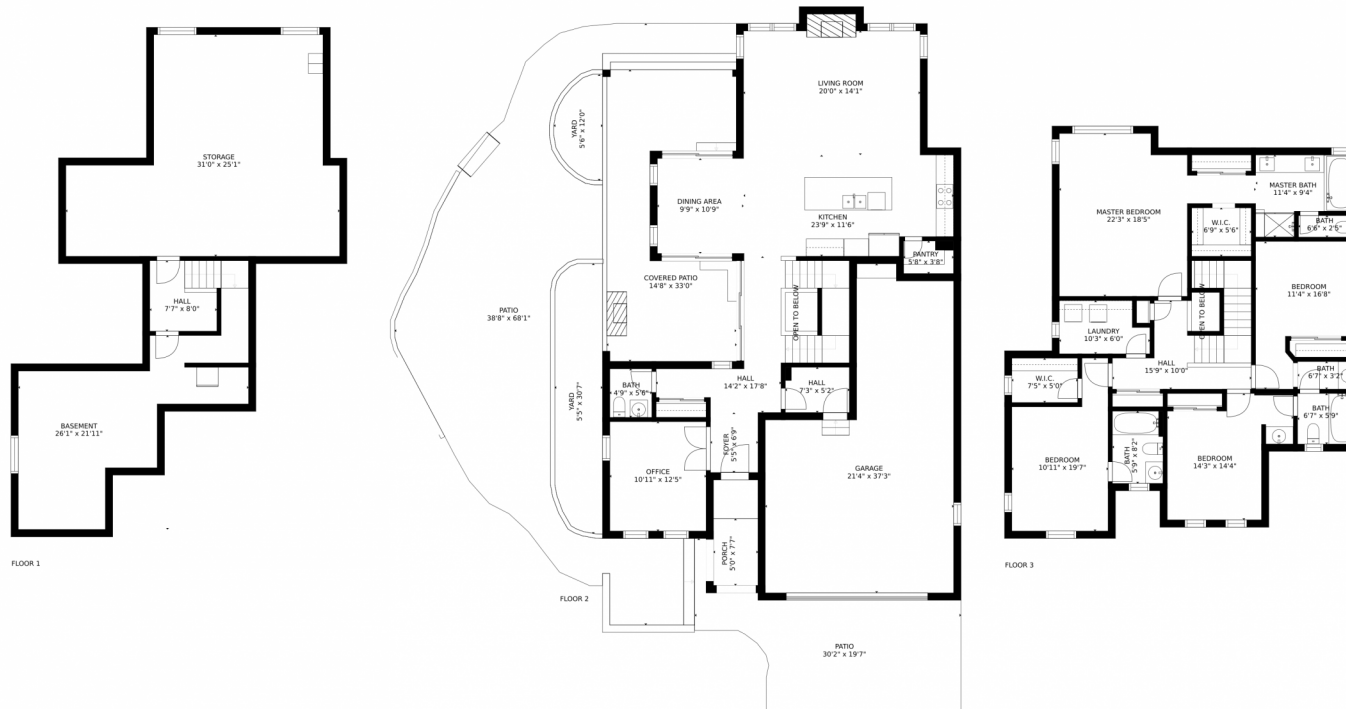
Disclaimer: Sizes and Dimensions are Approximate, Actual May Vary.



Paul D. Andrews
720-270-1306
andrews.realtor@gmail.com
<https://www.greaterdenverhomesite.com/paul-andrews/>



2245 S Nile Street, Lakewood, CO 80228 – All Levels



GROSS INTERNAL AREA
FLOOR 1: 1027 sq. ft. FLOOR 2: 1151 sq. ft.
FLOOR 3: 1385 sq. ft. EXCLUDED AREAS:
PATIO: 1555 sq. ft. PORCH: 38 sq. ft.
GARAGE: 599 sq. ft.
TOTAL: 3563 sq. ft.
SIZES AND DIMENSIONS ARE APPROXIMATE, ACTUAL MAY VARY.

Disclaimer: Sizes and Dimensions are Approximate, Actual May Vary.



Paul D. Andrews
720-270-1306
andrews.realtor@gmail.com
<https://www.greaterdenverhomesite.com/paul-andrews/>

