



Single Family



1000 SQFT



Taylor Haas

303-665-7368

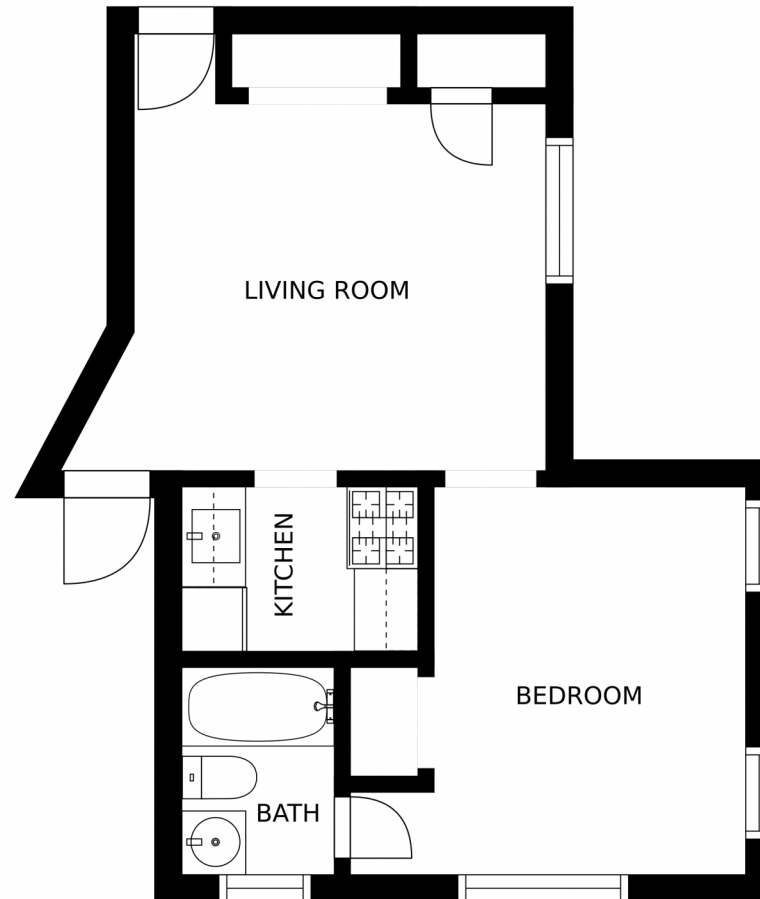
taylorh@coloradorpm.com

<https://www.coloradorpm.com/available-rental-properties-denv>



Scan code
for more
property
details





SIZES AND DIMENSIONS ARE APPROXIMATE, ACTUAL MAY VARY.

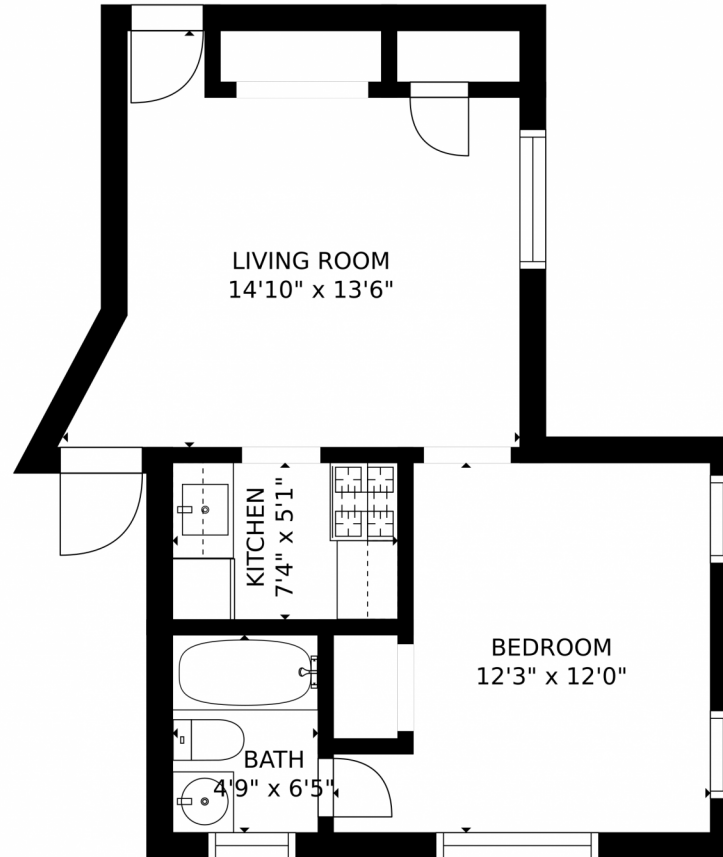
Disclaimer: Sizes and Dimensions are Approximate, Actual May Vary.



Taylor Haas
303-665-7368
taylorh@coloradorpm.com
<https://www.coloradorpm.com/available-rental-properties-denver>



489 South Sherman Street, Denver, CO 80209 – Floorplan (Dimensions)



GROSS INTERNAL AREA
FLOOR 1: 391 sq. ft
TOTAL: 391 sq. ft
SIZES AND DIMENSIONS ARE APPROXIMATE, ACTUAL MAY VARY.

Disclaimer: Sizes and Dimensions are Approximate, Actual May Vary.



Taylor Haas
303-665-7368
taylorh@coloradorpm.com
<https://www.coloradorpm.com/available-rental-properties-denv>

