



4300 Nelson Drive
Broomfield, CO 80023



Single Family



3430 SQFT

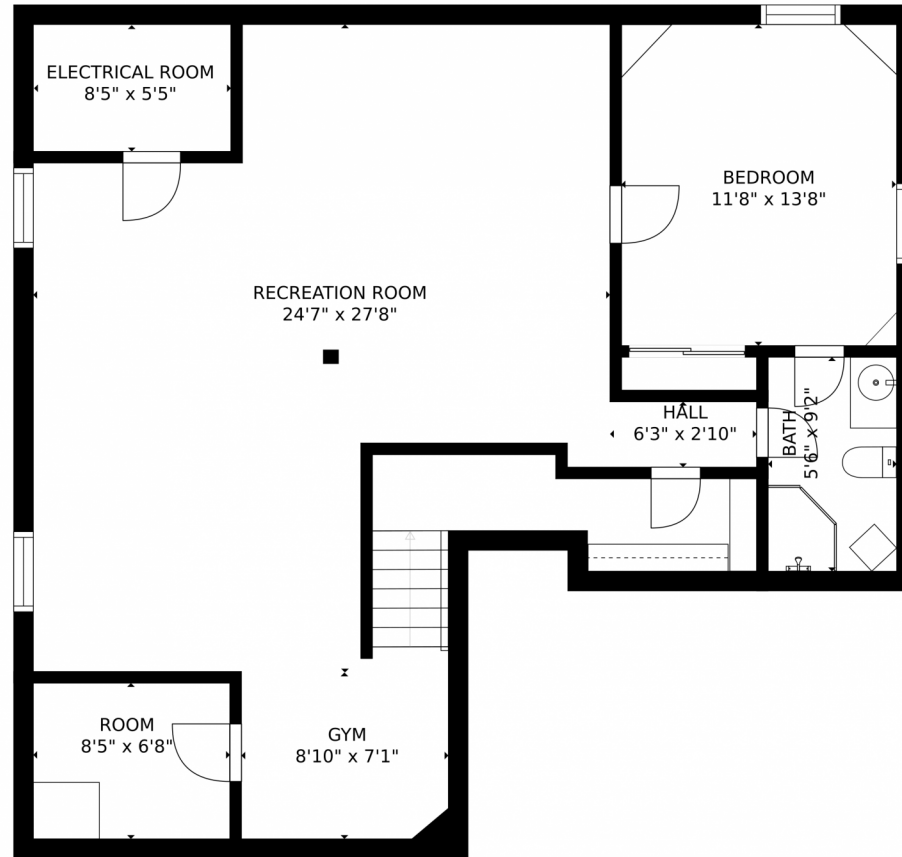


Tamim Aslamy
303-915-6888
tamim@metro21realestate.com



Scan code
for more
property
details

4300 Nelson Drive, Broomfield, CO 80023 – Lower Level



GROSS INTERNAL AREA
FLOOR 1: 1052 sq. ft. FLOOR 2: 1103 sq. ft.
FLOOR 3: 1323 sq. ft. EXCLUDED AREAS:
DECK: 392 sq. ft. PORCH: 104 sq. ft.
GARAGE: 503 sq. ft.
TOTAL: 3477 sq. ft.
SIZES AND DIMENSIONS ARE APPROXIMATE, ACTUAL MAY VARY.

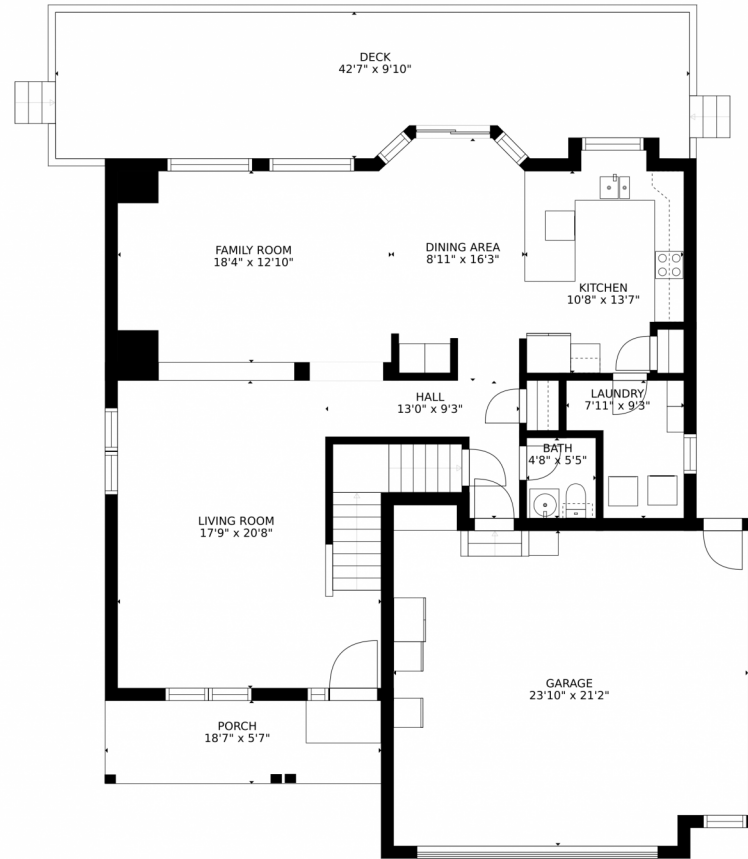
Disclaimer: Sizes and Dimensions are Approximate, Actual May Vary.



Tamim Aslamy
303-915-6888
tamim@metro21realestate.com



4300 Nelson Drive, Broomfield, CO 80023 – Main Level



GROSS INTERNAL AREA
FLOOR 1: 1052 sq. ft, FLOOR 2: 1103 sq. ft
FLOOR 3: 1323 sq. ft, EXCLUDED AREAS:
DECK: 392 sq. ft, PORCH: 104 sq. ft
GARAGE: 503 sq. ft
TOTAL: 3477 sq. ft
SIZES AND DIMENSIONS ARE APPROXIMATE, ACTUAL MAY VARY.

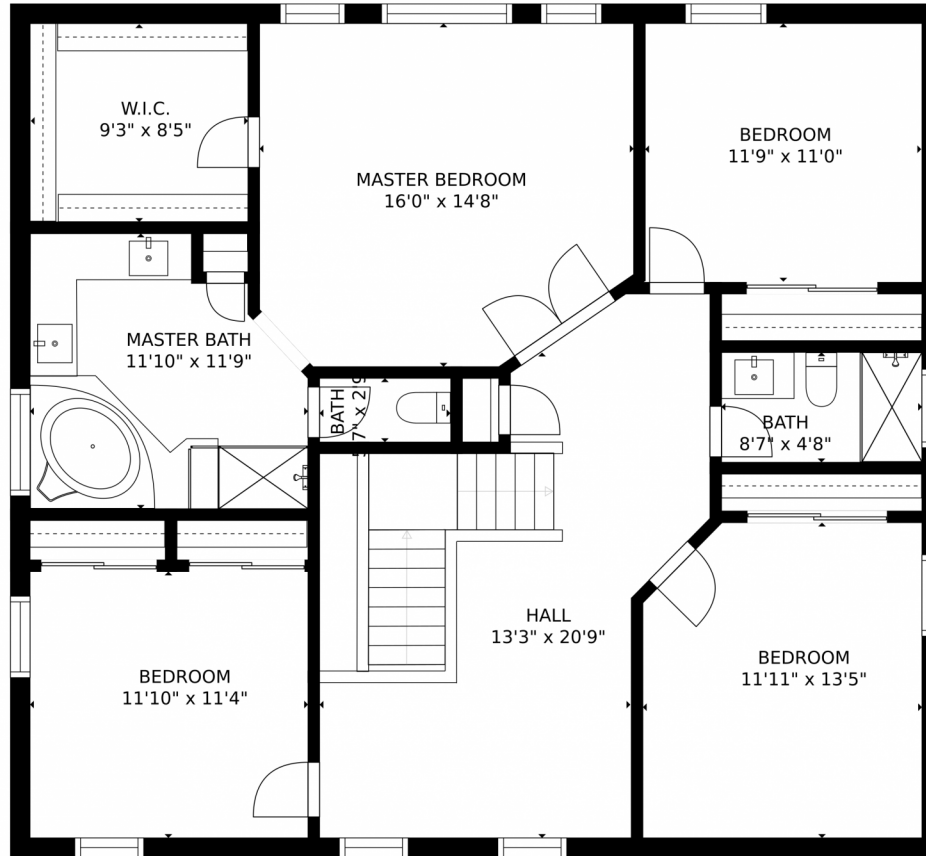
Disclaimer: Sizes and Dimensions are Approximate, Actual May Vary.



Tamim Aslamy
303-915-6888
tamim@metro21realestate.com



4300 Nelson Drive, Broomfield, CO 80023 – 2nd Level



GROSS INTERNAL AREA
FLOOR 1: 1052 sq. ft. FLOOR 2: 1103 sq. ft.
FLOOR 3: 1323 sq. ft. EXCLUDED AREAS:
DECK: 392 sq. ft. PORCH: 104 sq. ft.
GARAGE: 503 sq. ft.
TOTAL: 3477 sq. ft.
SIZES AND DIMENSIONS ARE APPROXIMATE, ACTUAL MAY VARY.

Disclaimer: Sizes and Dimensions are Approximate, Actual May Vary.



Tamim Aslamy
303-915-6888
tamim@metro21realestate.com



4300 Nelson Drive, Broomfield, CO 80023 – All Levels



GROSS INTERNAL AREA
FLOOR 1: 1052 sq. ft, FLOOR 2: 1103 sq. ft
FLOOR 3: 1323 sq. ft, EXCLUDED AREAS:
DECK: 392 sq. ft, PORCH: 104 sq. ft
GARAGE: 503 sq. ft
TOTAL: 3477 sq. ft

SIZES AND DIMENSIONS ARE APPROXIMATE, ACTUAL MAY VARY.

Disclaimer: Sizes and Dimensions are Approximate, Actual May Vary.



Tamim Aslamy
303-915-6888
tamim@metro21realestate.com

