



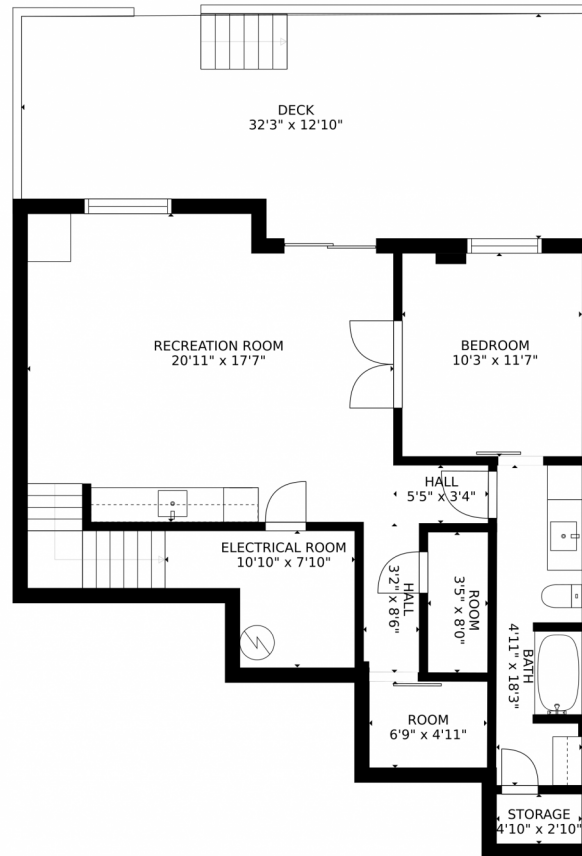
 Single Family  3152 SQFT



**Taylor Haas**  
303-665-7368  
taylorh@coloradorpm.com  
<https://www.coloradorpm.com/available-rental-properties-denver>



# 9545 Quintero Street, Commerce City, CO 80022 – Lower Level



GROSS INTERNAL AREA  
FLOOR 1: 780 sq. ft. FLOOR 2: 842 sq. ft.  
FLOOR 3: 1146 sq. ft. EXCLUDED AREAS:  
DECK: 509 sq. ft. PORCH: 97 sq. ft.  
GARAGE: 492 sq. ft.  
TOTAL: 2769 sq. ft.  
SIZES AND DIMENSIONS ARE APPROXIMATE, ACTUAL MAY VARY.

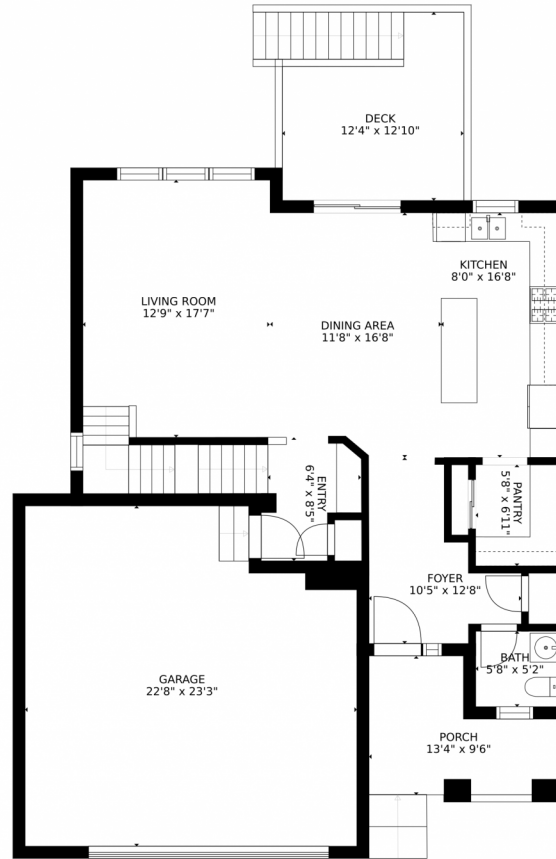
Disclaimer: Sizes and Dimensions are Approximate, Actual May Vary.



**Taylor Haas**  
303-665-7368  
taylorh@coloradorpm.com  
<https://www.coloradorpm.com/available-rental-properties-denver>



# 9545 Quintero Street, Commerce City, CO 80022 – Main Level



GROSS INTERNAL AREA  
FLOOR 1: 780 sq. ft. FLOOR 2: 842 sq. ft.  
FLOOR 3: 1146 sq. ft. EXCLUDED AREAS:  
DECK: 509 sq. ft. PORCH: 97 sq. ft.  
GARAGE: 492 sq. ft.  
TOTAL: 2769 sq. ft.  
SIZES AND DIMENSIONS ARE APPROXIMATE, ACTUAL MAY VARY.

Disclaimer: Sizes and Dimensions are Approximate, Actual May Vary.

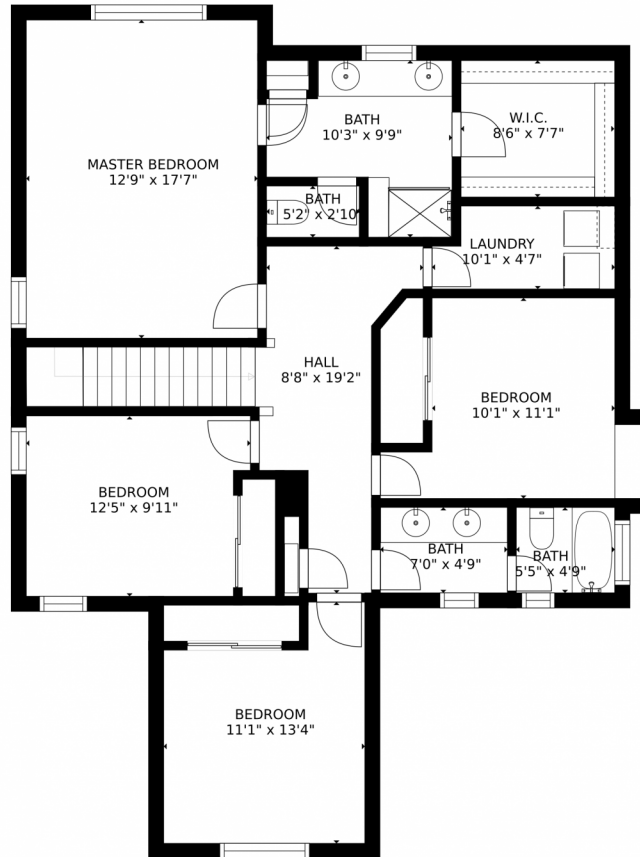


**Taylor Haas**  
303-665-7368  
taylorh@coloradorpm.com  
<https://www.coloradorpm.com/available-rental-properties-denver>



Scan code  
for more  
property  
details

9545 Quintero Street, Commerce City, CO 80022 – 2nd Level



GROSS INTERNAL AREA  
FLOOR 1: 780 sq. ft. FLOOR 2: 842 sq. ft  
FLOOR 3: 1146 sq. ft. EXCLUDED AREAS:  
DECK: 509 sq. ft. PORCH: 97 sq. ft  
GARAGE: 492 sq. ft  
TOTAL: 2769 sq. ft  
SIZES AND DIMENSIONS ARE APPROXIMATE, ACTUAL MAY VARY.

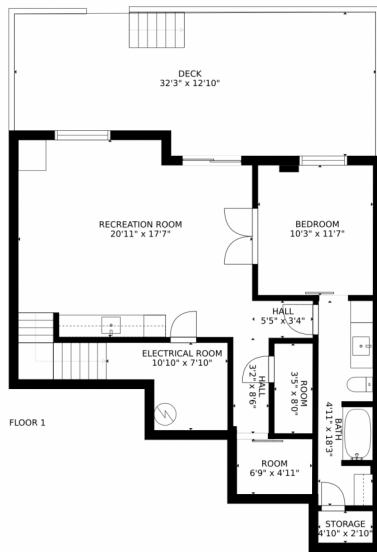
Disclaimer: Sizes and Dimensions are Approximate, Actual May Vary.



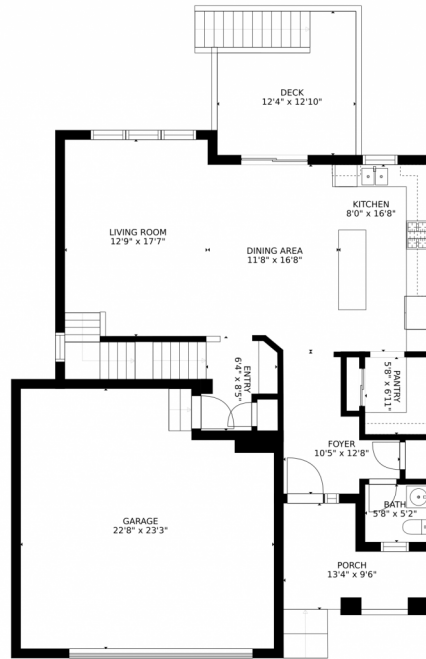
**Taylor Haas**  
303-665-7368  
taylorh@coloradorpm.com  
<https://www.coloradorpm.com/available-rental-properties-denver>



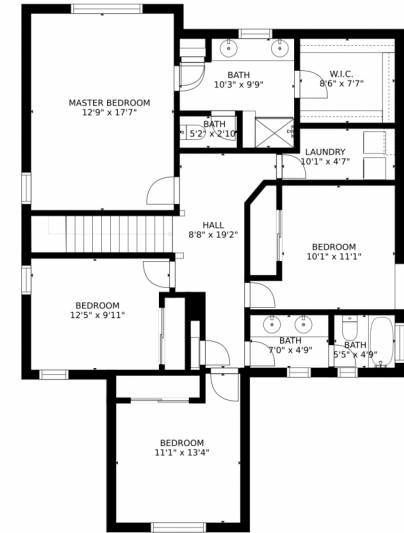
# 9545 Quintero Street, Commerce City, CO 80022 – All Levels



FLOOR 1



FLOOR 2



FLOOR 3

GROSS INTERNAL AREA  
FLOOR 1: 780 sq. ft. FLOOR 2: 842 sq. ft  
FLOOR 3: 1146 sq. ft. EXCLUDED AREAS:  
DECK: 509 sq. ft. PORCH: 97 sq. ft  
GARAGE: 492 sq. ft  
TOTAL: 2769 sq. ft  
SIZES AND DIMENSIONS ARE APPROXIMATE, ACTUAL MAY VARY.

Disclaimer: Sizes and Dimensions are Approximate, Actual May Vary.



**Taylor Haas**  
303-665-7368  
taylorh@coloradorpm.com  
<https://www.coloradorpm.com/available-rental-properties-denver>



Scan code  
for more  
property  
details