



Single Family



2043 SQFT



3 Beds



4/1 Baths



2 Car



0.06 Acre

PROPERTY DETAILS

Midtown modern 3Bed + office/ 4bath beauty w/ both City & Mountain views!! Private lot off small courtyard and Clear Creek pedestrian/bike path * Evoke premium vinyl plank wood floors throughout main & upper floors...stairs too!! 10' ceilings, vaulted ceilings in bedrooms & 8 1/2' ceilings in fully finished basement * Gorgeous kitchen w/ unique granite slab countertops, Bosch SS appliances, custom suspended shelving over kitchen island, custom pull-outs in cabinets and additional pantry * Master suite w/ en suite 3/4 bath, huge walk-in closet w/ floor-to-ceiling shelves, vaulted ceilings, terrific "wall of windows w/ City views," (black-out blinds included) and ceiling fan! * Fully finished basement w/ stamped concrete floor, double Egress window, wet-bar w/ cherry-stained butcher block countertops, beverage cooler, really fun SS cabinets & new 3/4 bath w/ custom tile * Wired for CAT5 including several direct connections throughout home * 2-car garage w/ tons of extra storage including heavy-duty weight bearing custom shelving * Dining room w/ 8' patio door leading out to fantastic private extended patio & yard w/ raised garden bed, flower planters galore and 2-zone watering system....Fabulous location w/ an average 15 minute drive to Downtown Denver, close proximity to Hwys 36, 76, 70 & I-25. Close to 2 Light-Rail Stations(G & B lines), TWO dog parks, Home Plate Park w/ splash pad, playground & soccer fields, local brewery w/ daily food trucks, outdoor events



Suellen Mack
303-378-6310
mack12@comcast.net



Scan code
for more
property
details



including movies & concerts, Trailside Academy & Midtown Montessori and community garden!!!! Incredible home w/
incredible location! OPEN HOUSE SUNDAY(7/25) 10AM-1PM!

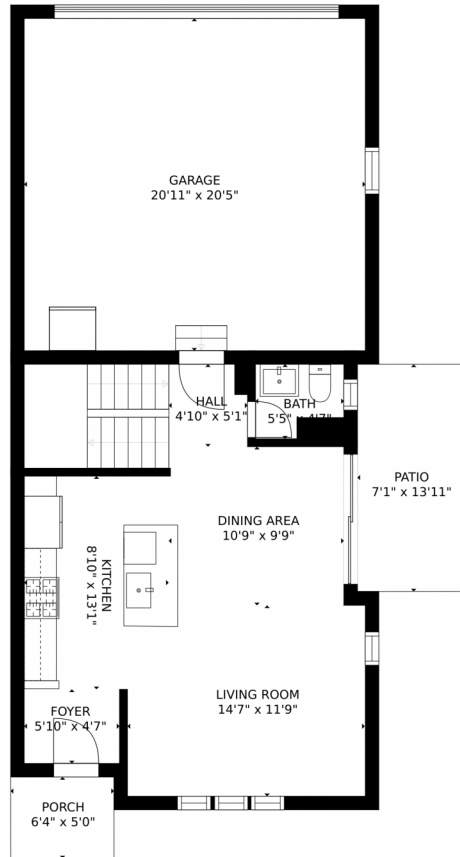


Suellen Mack
303-378-6310
mack12@comcast.net



Scan code
for more
property
details





GROSS INTERNAL AREA
FLOOR 1: 459 sq. ft. FLOOR 2: 522 sq. ft.
FLOOR 3: 960 sq. ft. EXCLUDED AREAS:
PATIO: 99 sq. ft. PORCH: 32 sq. ft.
GARAGE: 426 sq. ft.
TOTAL: 1941 sq. ft.

SIZES AND DIMENSIONS ARE APPROXIMATE, ACTUAL MAY VARY.

Disclaimer: Sizes and Dimensions are Approximate, Actual May Vary.

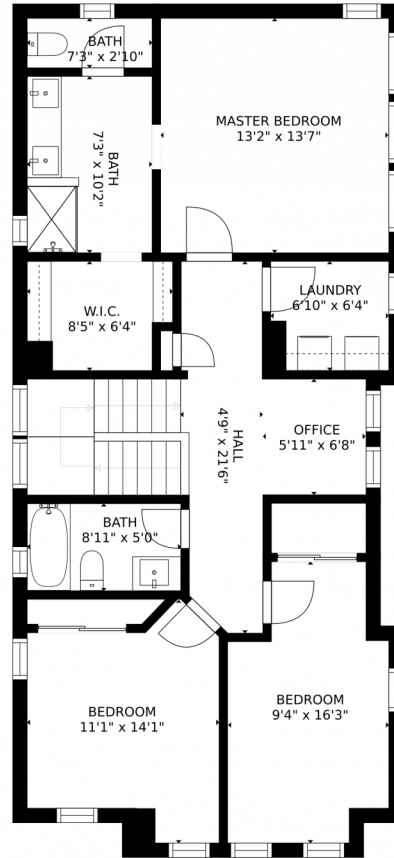


Suellen Mack
303-378-6310
mack12@comcast.net



Scan code
for more
property
details

1740 W 66th Avenue, Denver, CO 80221 – 2nd Level



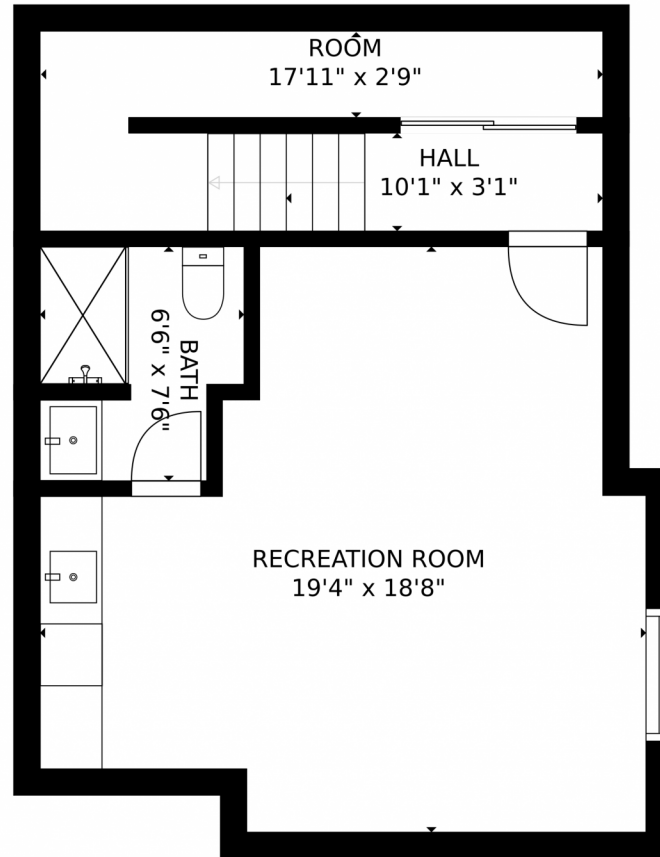
GROSS INTERNAL AREA
FLOOR 1: 459 sq. ft. FLOOR 2: 522 sq. ft.
FLOOR 3: 960 sq. ft. EXCLUDED AREAS:
PATIO: 99 sq. ft. PORCH: 32 sq. ft.
GARAGE: 426 sq. ft.
TOTAL: 1941 sq. ft.
SIZES AND DIMENSIONS ARE APPROXIMATE, ACTUAL MAY VARY.

Disclaimer: Sizes and Dimensions are Approximate, Actual May Vary.



Suellen Mack
303-378-6310
mack12@comcast.net





GROSS INTERNAL AREA
FLOOR 1: 459 sq. ft. FLOOR 2: 522 sq. ft.
FLOOR 3: 960 sq. ft. EXCLUDED AREAS:
PATIO: 99 sq. ft. PORCH: 32 sq. ft.
GARAGE: 426 sq. ft.
TOTAL: 1941 sq. ft.
SIZES AND DIMENSIONS ARE APPROXIMATE, ACTUAL MAY VARY.

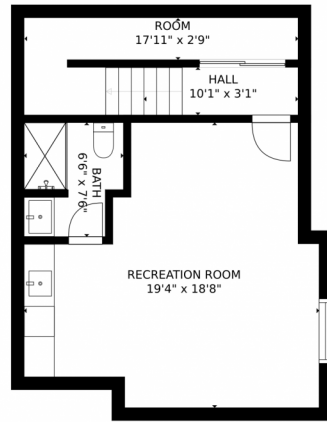
Disclaimer: Sizes and Dimensions are Approximate, Actual May Vary.



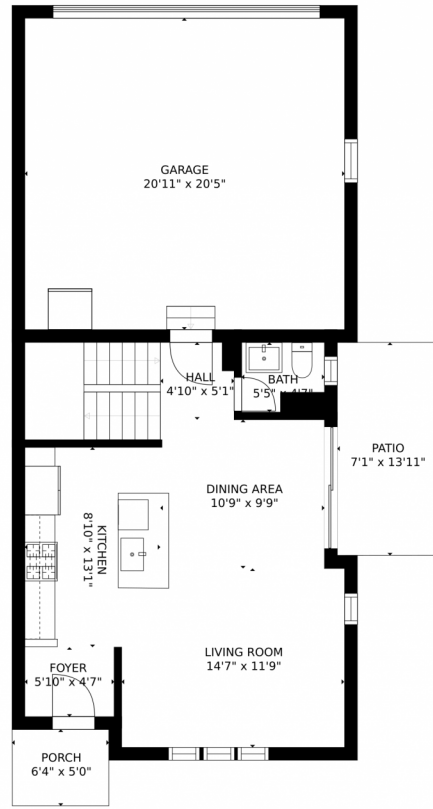
Suellen Mack
303-378-6310
mack12@comcast.net



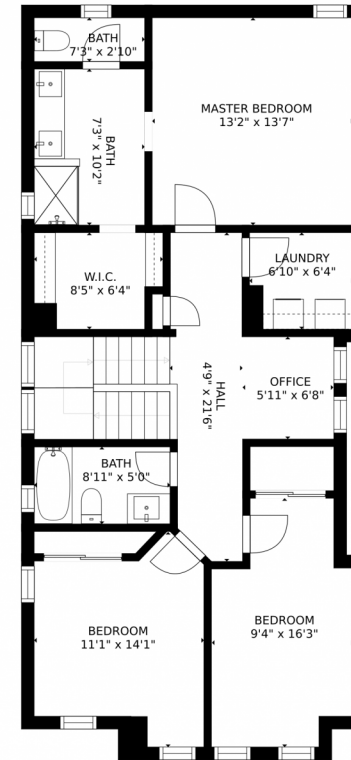
1740 W 66th Avenue, Denver, CO 80221 – All Levels



FLOOR 1



FLOOR 2



FLOOR 3

GROSS INTERNAL AREA
FLOOR 1: 459 sq. ft. FLOOR 2: 522 sq. ft.
FLOOR 3: 960 sq. ft. EXCLUDED AREAS:
PATIO: 99 sq. ft. PORCH: 32 sq. ft.
GARAGE: 426 sq. ft.
TOTAL: 1941 sq. ft.
SIZES AND DIMENSIONS ARE APPROXIMATE, ACTUAL MAY VARY.

Disclaimer: Sizes and Dimensions are Approximate, Actual May Vary.



Suellen Mack
303-378-6310
mack12@comcast.net

