




 Single Family  6476 SQFT  3 Beds  3/2 Baths  8 Car  0.92 Acre

PROPERTY DETAILS

Enjoy the Colorado lifestyle in this stunning home located in the High Point filing of Genesee. This home overlooks Evergreen, Bergen Park, Elk Meadow and offers incredible views of Mt. Evans and the Continental Divide. From the Master Suite you will enjoy Denver city light views, Chatfield Reservoir, and the eastern horizon. Soaring Timber Truss beams, T&G ceiling, floor to ceiling windows and a massive moss rock wall with a gas fireplace grace the great room. Reclaimed wide plank southern pine flooring flows through the main level.



Peg Schroeder
303-885-4404
peg@tuppersteam.com



1883 Montane Drive East, Golden, CO 80401 – All Levels



GROSS INTERNAL AREA
FLOOR 1: 1176 sq. ft, FLOOR 2: 3685 sq. ft
EXCLUDED AREAS: , GARAGE: 1712 sq. ft
BALCONY: 221 sq. ft, PATIO: 486 sq. ft
PORCH: 112 sq. ft
TOTAL: 4861 sq. ft
SIZES AND DIMENSIONS ARE APPROXIMATE, ACTUAL MAY VARY.

Disclaimer: Sizes and Dimensions are Approximate, Actual May Vary.

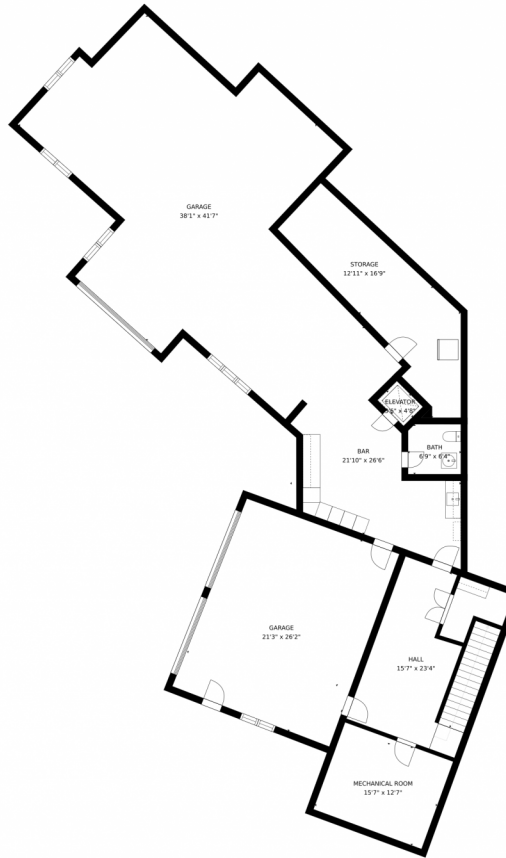


Peg Schroeder
303-885-4404
peg@tuppersteam.com



Scan code
for more
property
details

1883 Montane Drive East, Golden, CO 80401 – Lower Level



GROSS INTERNAL AREA
FLOOR 1: 1176 sq. ft, FLOOR 2: 3685 sq. ft
EXCLUDED AREAS: , GARAGE: 1712 sq. ft
BALCONY: 221 sq. ft, PATIO: 486 sq. ft
PORCH: 112 sq. ft
TOTAL: 4861 sq. ft
SIZES AND DIMENSIONS ARE APPROXIMATE, ACTUAL MAY VARY.

Disclaimer: Sizes and Dimensions are Approximate, Actual May Vary.



Peg Schroeder
303-885-4404
peg@tuppersteam.com



