



EXECUTIVES REALTY, LLC
DENVER SOUTH METRO

1465 Saltbush Ridge Rd
Highlands Ranch, CO 80126
COMMUNITY: Timberline Ridge

MLS # 8160619
PRICE \$995,000



Single Family



4709 SQFT



5 Beds



4/1 Baths



3 Car

PROPERTY DETAILS

This is the one you have been dreaming about! Sanford built home with Majestic Mountain Views on rolling open space and set at the end of private cul de sac on a rare quarter acre lot located in highly sought Timberline Ridge. Walk up to the expansive front porch and through the front door to the welcoming 2 story Grand Hall entry way. Beautifully remodeled Kitchen boasts brand new quartz countertops, stainless steel appliances featuring a double oven with convection oven, induction cooktop, and an enormous center island for chef's cooking with radius seating up to four. Second floor layout designed with oversized Bedrooms each with private Bathroom access. Large Master Suite includes a Marble Master SPA Bathroom with heated marble floors, 5x5 ft double Steam Shower and clawfoot slipper tub elevated for you to soak and see the Colorado peaks! Finished Basement ideal for mother-in-law/teens private apartment including a wet bar with dishwasher, refrigerator, and sink. The surround sound theater room is perfect for enjoying a relaxing movie night! Walk out of the Basement to enjoy the "cool-room" 3-season escape and sheltered outside area for relaxing. The wonderfully wide backyard holds boundless options for entertaining, throwing a football, summer BBQ's, and family reunions. Backyard also features 500+s/f of raised garden beds, dog run, full size storage shed and mature trees which have been professionally maintained for



Steve Nickerson

303-885-5675

contracts@onehomecolorado.com

<http://www.OneHomeColorado.com>



Scan code
for more
property
details



maximum privacy, secluding this property on either side. Recent improvements of the home include new hardwood and carpet throughout, new custom lighting, new paint, new A/C, new windows, new high-end garage doors and new roof w/architectural shingles. A combination of access and views, the quiet of crickets and darkness away from city lights so as to see full, starry nights, but still five-minutes from C-470 with every creature comfort at your beck and call creating the Hat-trick of a private oasis, modern views, and luxury living.



Steve Nickerson

303-885-5675

contracts@onehomecolorado.com

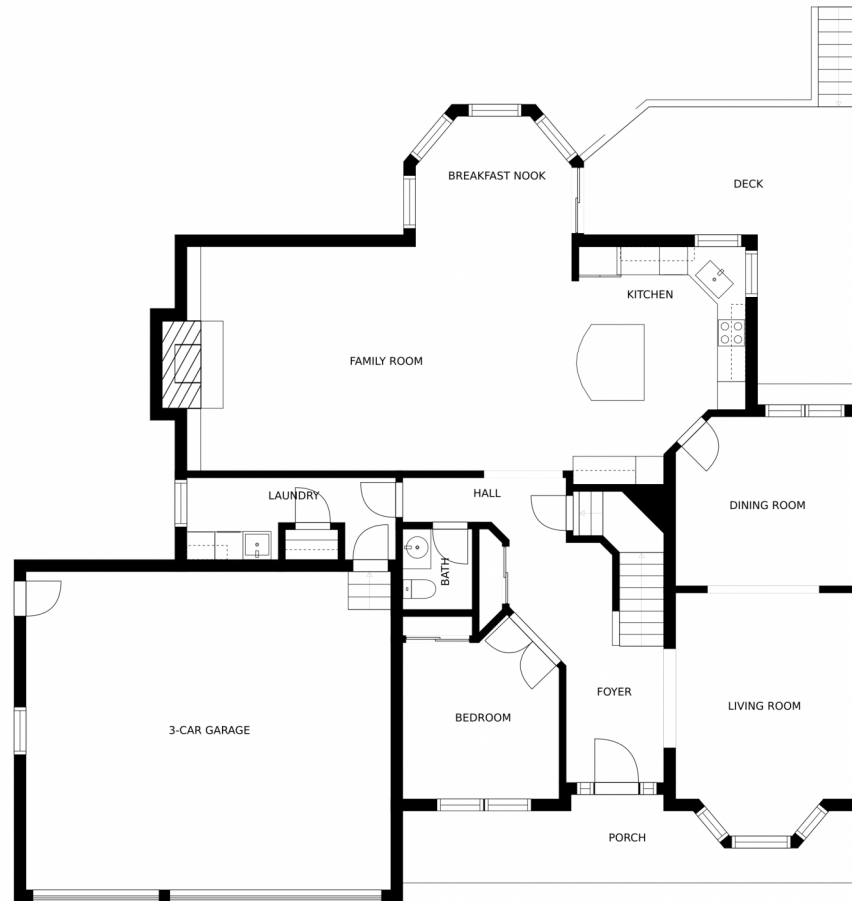
<http://www.OneHomeColorado.com>



Scan code
for more
property
details



1465 Saltbush Ridge Rd, Highlands Ranch, CO 80126 – Main Level



SIZES AND DIMENSIONS ARE APPROXIMATE, ACTUAL MAY VARY.

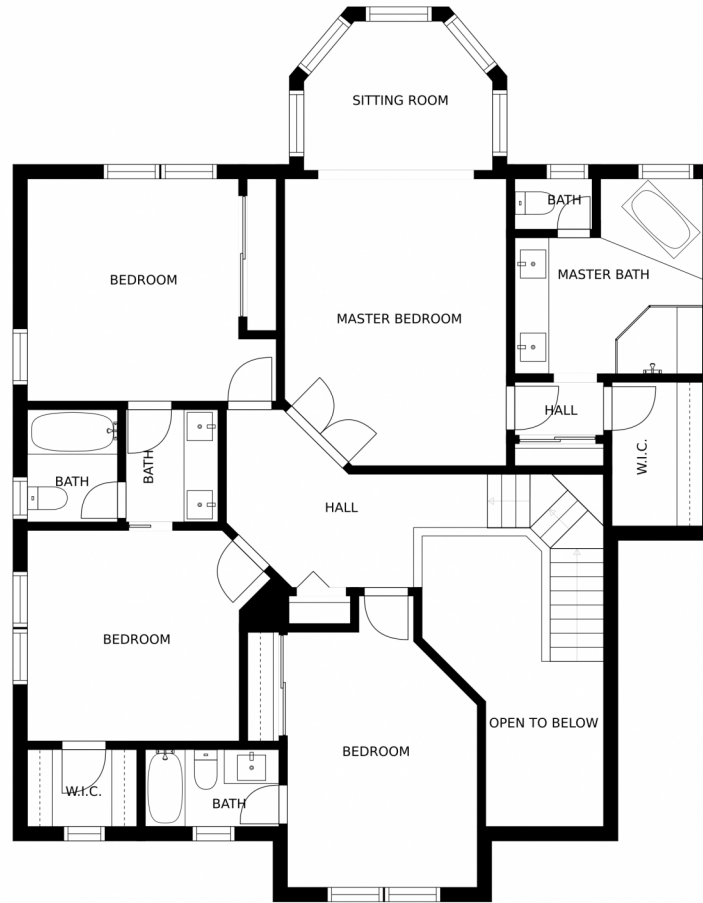
Disclaimer: Sizes and Dimensions are Approximate, Actual May Vary.



Steve Nickerson
303-885-5675
contracts@onehomecolorado.com
<http://www.OneHomeColorado.com>



1465 Saltbush Ridge Rd, Highlands Ranch, CO 80126 – 2nd Story



SIZES AND DIMENSIONS ARE APPROXIMATE, ACTUAL MAY VARY.

Disclaimer: Sizes and Dimensions are Approximate, Actual May Vary.

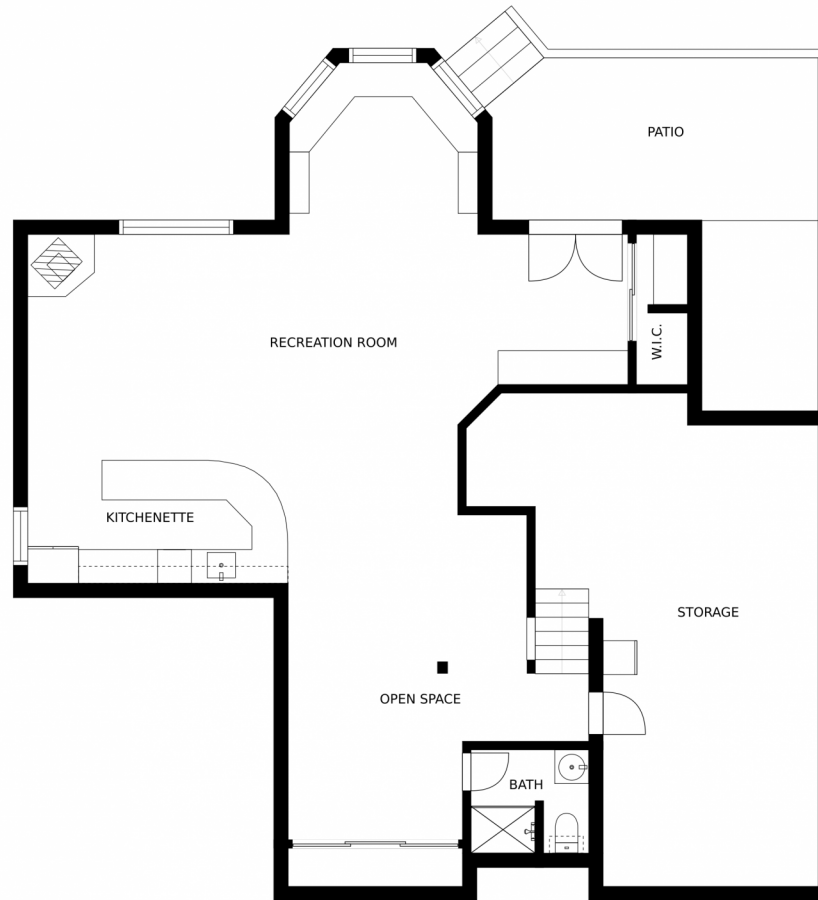


Steve Nickerson
303-885-5675
contracts@onehomecolorado.com
<http://www.OneHomeColorado.com>



Scan code
for more
property
details

1465 Saltbush Ridge Rd, Highlands Ranch, CO 80126 – Lower Level



SIZES AND DIMENSIONS ARE APPROXIMATE, ACTUAL MAY VARY.

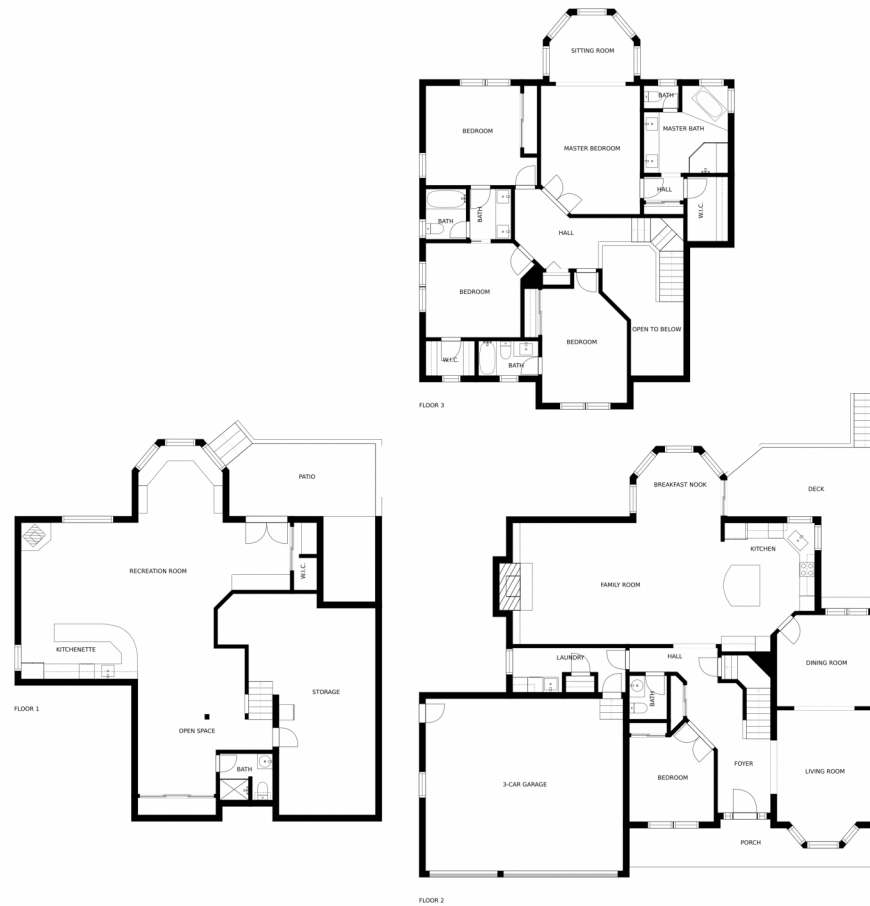
Disclaimer: Sizes and Dimensions are Approximate, Actual May Vary.



Steve Nickerson
303-885-5675
contracts@onehomecolorado.com
<http://www.OneHomeColorado.com>



1465 Saltbush Ridge Rd, Highlands Ranch, CO 80126 – All Floors



SIZES AND DIMENSIONS ARE APPROXIMATE, ACTUAL MAY VARY.

Disclaimer: Sizes and Dimensions are Approximate, Actual May Vary.



Steve Nickerson
303-885-5675
contracts@onehomecolorado.com
<http://www.OneHomeColorado.com>



Scan code
for more
property
details