



783 S Oneida Way
 Denver, CO 80224
 COMMUNITY: Virginia Vale

MLS # 7938087
 PRICE \$800,000



Single Family 4004 SQFT 4 Beds 3 Baths 2 Car 0.34 Acre

PROPERTY DETAILS

This is the one you have been waiting for in Virginia Vale! The perfect Denver location meets mid-century modern charm in this fully updated brick-lain ranch-style beauty. Arguably the best home available in the neighborhood this meticulously maintained abode is quietly nestled atop an oversized lot just shy of 15,000 square feet offering one of the largest floor plans you will see in Virginia Vale/Lee Downs with 4,000 finished square feet of living space. Every important detail true to the era has been restored and maintained from the traditional rich wood trim found in every room to frosted glass decorative detailing and custom built-ins for your every lifestyle convenience in multiple rooms of the home. Many honey-do's have already been honey-done including all brand new carpet, a flawlessly remastered spa-inspired owner's retreat with a 5-piece bath, and your dream kitchen boasting Quartz countertops along with higher-end stainless appliances. The expansive layout of the main level has it all from the formal living room just off of the entry to an open concept dining area anchored by a stately stone lain wood fireplace. A full-sized finished basement offers you endless possibilities to expand with a secondary family room, massive bedroom, third bathroom, and plenty of storage. You will love hosting your next Summer BBQ in the spectacular outdoor living space showcasing an oversized covered patio along with a pride of ownership backyard offering tons of space for lounge and



Tatyana Sturm
 720-350-5909
 tatyana@exitrealttydtc.com
 https://thestorckteam.com



play. With the Lowry district just minutes to your Northeast and Cherry Creek Mall just minutes to the West you will never run out of things to do including a multitude of golf courses and open spaces for recreation, Wings Over the Rockies Museum, dining options from casual to fine dining, and more shopping than you can imagine. Any commute is a breeze with the home located just off of Leetsdale and Monaco giving you quick and carefree access to Downtown Denver, Cherry Creek, and the DTC.



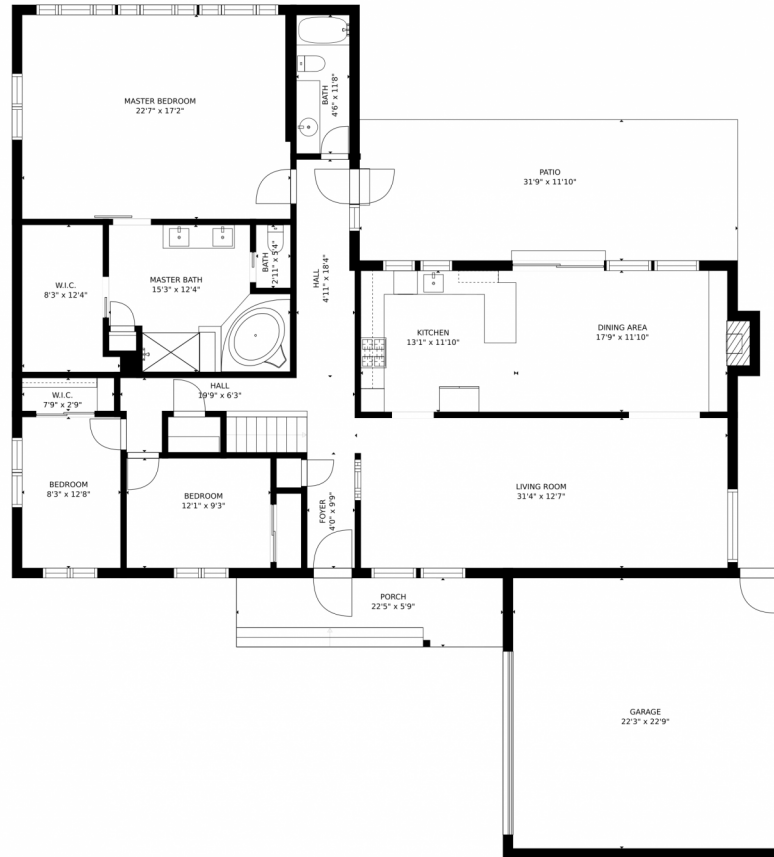
Tatyana Sturm
720-350-5909
tatyana@exitrealtydtc.com
<https://thestorckteam.com>



Scan code
for more
property
details



783 S Oneida Way, Denver, CO 80224 – Main Level



Estimated areas

GLA FLOOR 1: 1516 sq. ft, excluded 35 sq. ft
GLA FLOOR 2: 2247 sq. ft, excluded 13 sq. ft
Total GLA 3763 sq. ft, total scanned area 5408 sq. ft

SIZES AND DIMENSIONS ARE APPROXIMATE, ACTUAL MAY VARY.

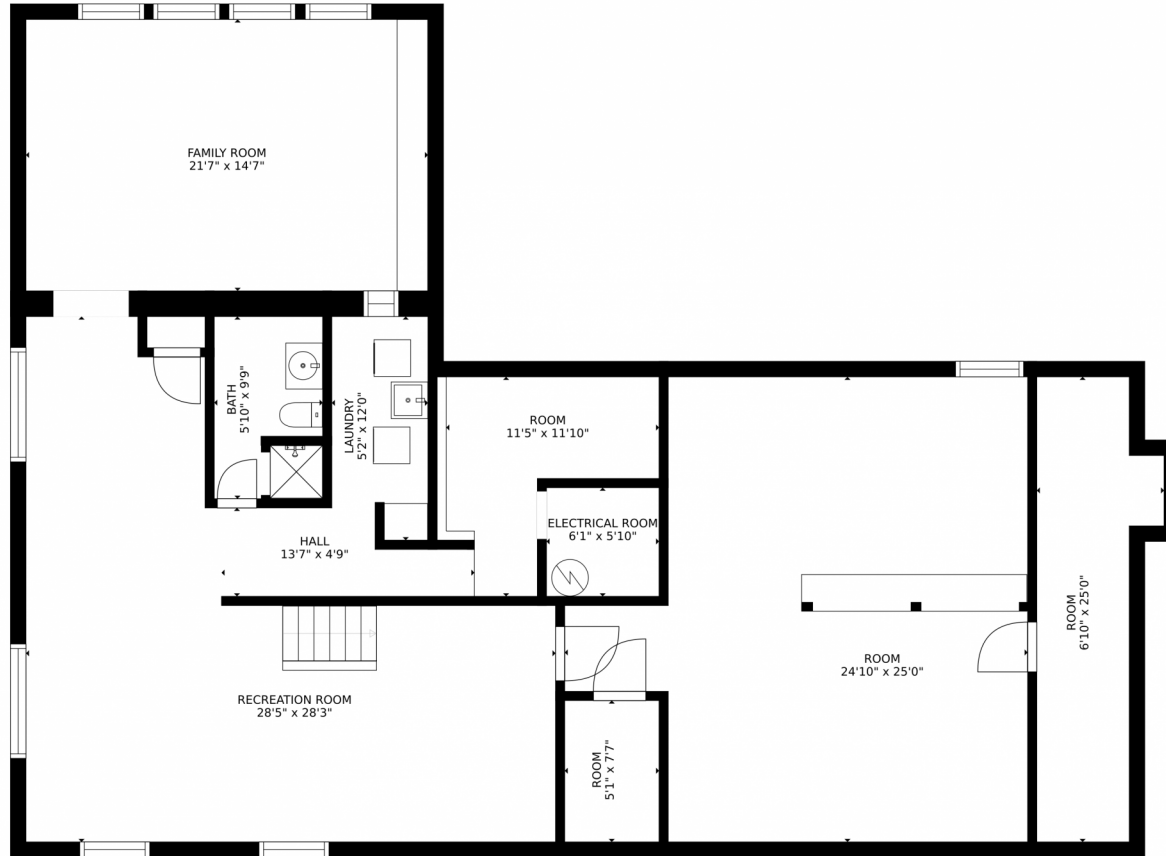
Disclaimer: Sizes and Dimensions are Approximate, Actual May Vary.



Tatyana Sturm
720-350-5909
tatyana@exitrealttydc.com
<https://thestorckteam.com>



783 S Oneida Way, Denver, CO 80224 – Lower Level



Estimated areas

GLA FLOOR 1: 1516 sq. ft, excluded 35 sq. ft
GLA FLOOR 2: 2247 sq. ft, excluded 13 sq. ft
Total GLA 3763 sq. ft, total scanned area 5408 sq. ft

SIZES AND DIMENSIONS ARE APPROXIMATE, ACTUAL MAY VARY.

Disclaimer: Sizes and Dimensions are Approximate, Actual May Vary.



Tatyana Sturm
720-350-5909
tatyana@exitrealtydtc.com
<https://thestorckteam.com>



783 S Oneida Way, Denver, CO 80224 – All Levels



Estimated areas

GLA FLOOR 1: 1516 sq. ft, excluded 35 sq. ft
GLA FLOOR 2: 2247 sq. ft, excluded 13 sq. ft
Total GLA 3763 sq. ft, total scanned area 5408 sq. ft

SIZES AND DIMENSIONS ARE APPROXIMATE, ACTUAL MAY VARY.

Disclaimer: Sizes and Dimensions are Approximate, Actual May Vary.



Tatyana Sturm
720-350-5909
tatyana@exitrealtydtc.com
<https://thestorckteam.com>

