



403 Antler Way, Winter Park, CO 80482 - All Levels



Multi Family 1994 SQFT 3 Beds 2/1 Baths 1 Car

PROPERTY DETAILS

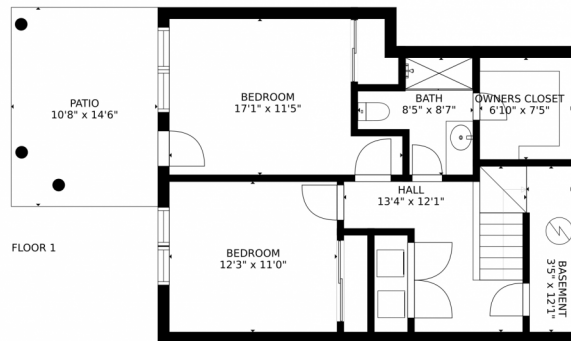
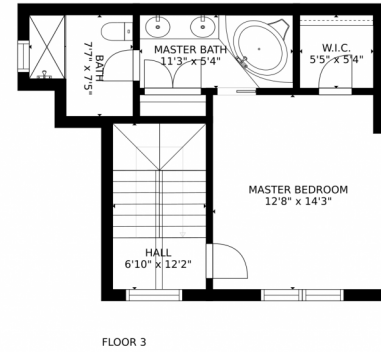
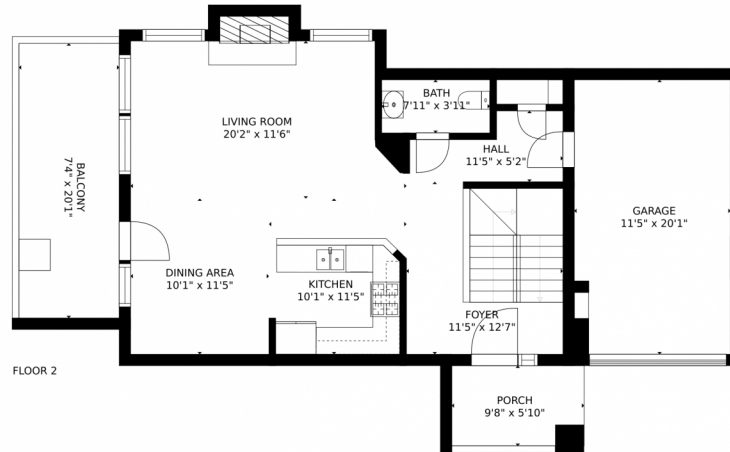
ENJOY INCREDIBLE, UNOBSTUCTED VIEWS OF WINTER PARK SKI RESORT from this popular townhome model. Spacious living area gives way to soaring ceilings, allowing the massive windows to capture the full on mountain spectacle. Tastefully furnished throughout, and impeccably well maintained, there is no detail left for you to worry about. A private hot tub on the lower level is waiting for you to relax in after an adventurous day on the slopes and the in-floor radiant heat throughout extends into the garage so you can carry on comfortably from home to road. Just steps away is the free shuttle bus stop, but a short walk across the road will take you right to the base village, with shops, restaurants, and the lifts. Lightly rented, the rental history is available upon request.



Clare Day
720-341-7456
homes@clare-day.com
<https://www.dayluxehomes.com/>



403 Antler Way, Winter Park, CO 80482 – All Levels



GROSS INTERNAL AREA
FLOOR 1: 637 sq. ft. FLOOR 2: 694 sq. ft.
FLOOR 3: 431 sq. ft. EXCLUDED AREAS:
PATIO: 156 sq. ft. BALCONY: 147 sq. ft.
PORCH: 57 sq. ft. GARAGE: 228 sq. ft.
TOTAL: 1762 sq. ft.
SIZES AND DIMENSIONS ARE APPROXIMATE, ACTUAL MAY VARY.

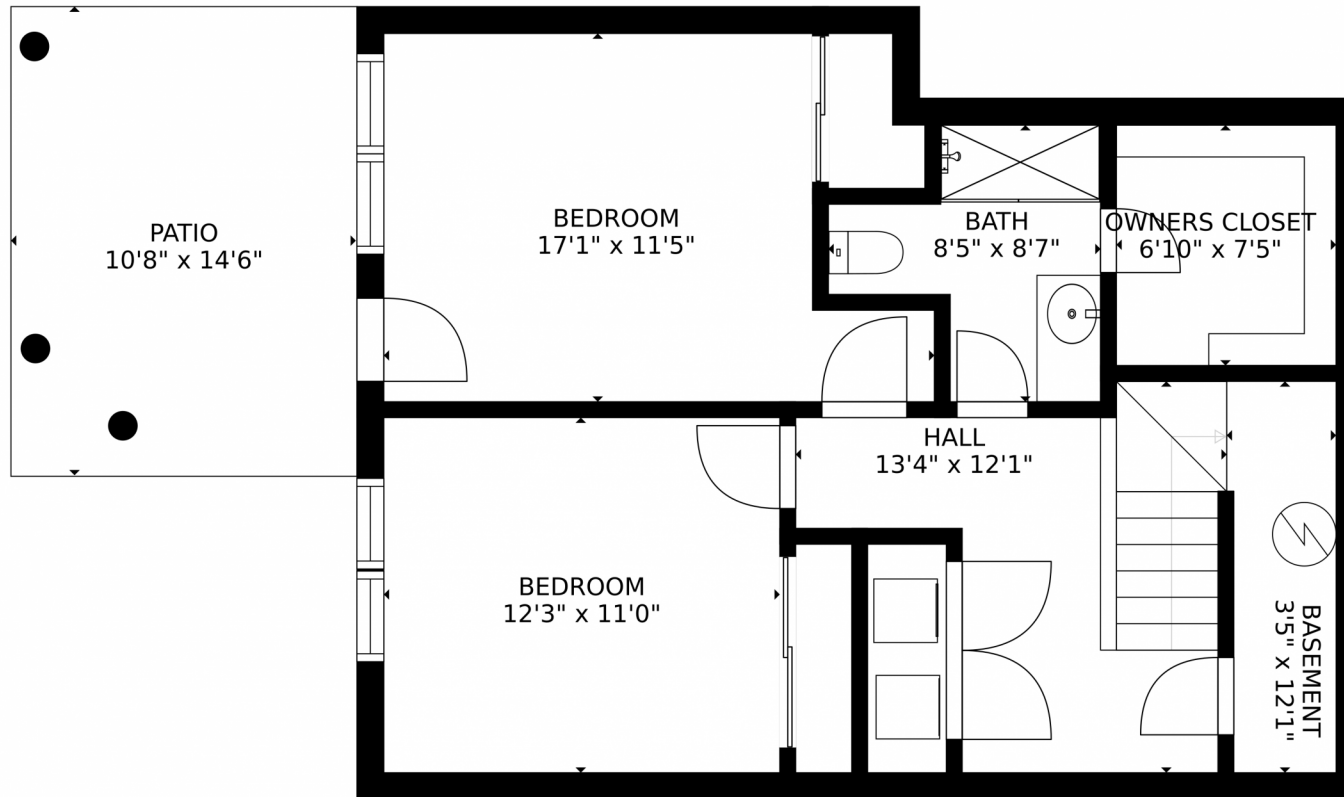
Disclaimer: Sizes and Dimensions are Approximate, Actual May Vary.



Clare Day
720-341-7456
homes@clare-day.com
<https://www.dayluxehomes.com/>



403 Antler Way, Winter Park, CO 80482 – Lower Level



GROSS INTERNAL AREA
FLOOR 1: 637 sq. ft. FLOOR 2: 694 sq. ft.
FLOOR 3: 431 sq. ft. EXCLUDED AREAS:
PATIO: 156 sq. ft. BALCONY: 147 sq. ft.
PORCH: 57 sq. ft. GARAGE: 228 sq. ft.
TOTAL: 1762 sq. ft.
SIZES AND DIMENSIONS ARE APPROXIMATE, ACTUAL MAY VARY.

Disclaimer: Sizes and Dimensions are Approximate, Actual May Vary.

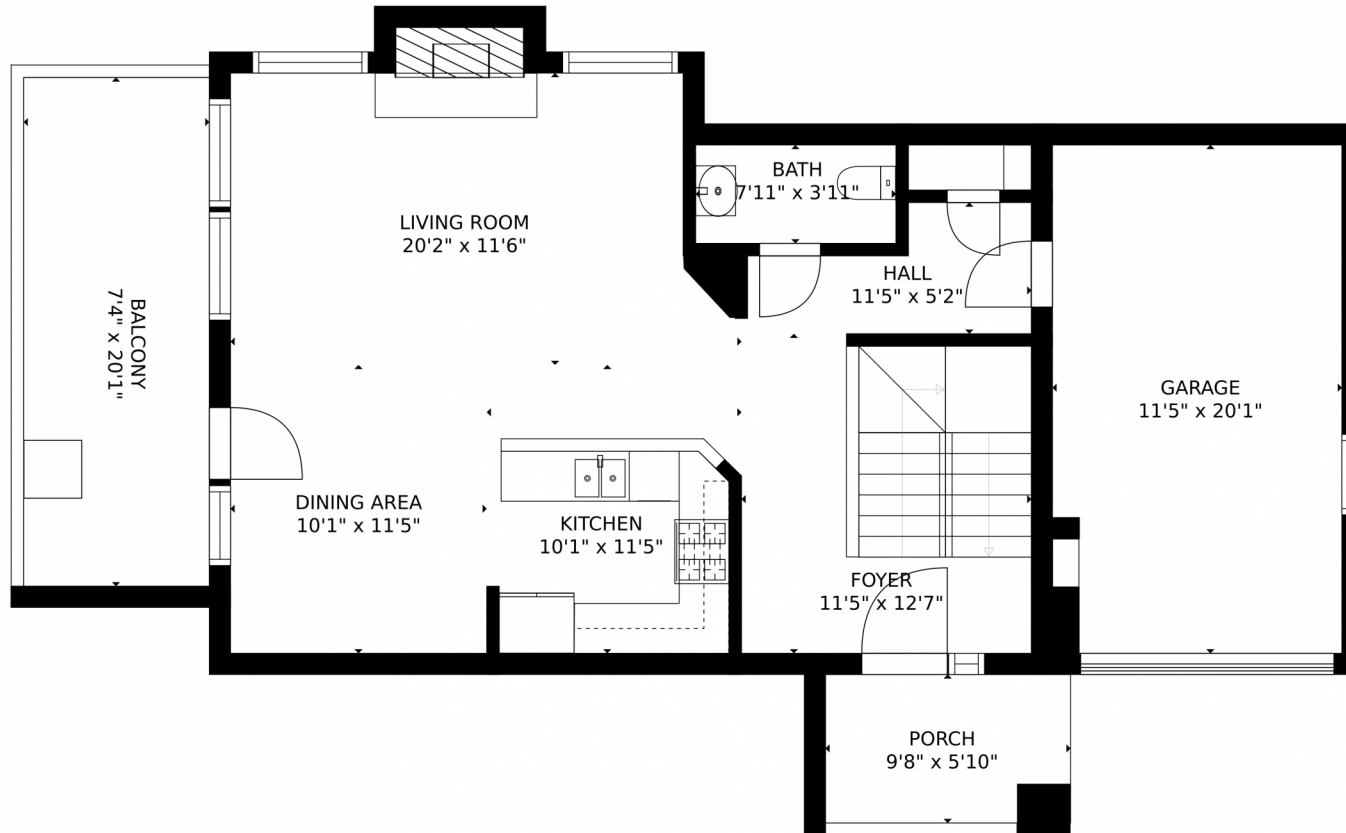


Clare Day
720-341-7456
homes@clare-day.com
<https://www.dayluxehomes.com/>



Scan code
for more
property
details

403 Antler Way, Winter Park, CO 80482 – Main Level



GROSS INTERNAL AREA
FLOOR 1: 637 sq. ft. FLOOR 2: 694 sq. ft.
FLOOR 3: 431 sq. ft. EXCLUDED AREAS:
PATIO: 156 sq. ft. BALCONY: 147 sq. ft.
PORCH: 57 sq. ft. GARAGE: 228 sq. ft.
TOTAL: 1762 sq. ft.
SIZES AND DIMENSIONS ARE APPROXIMATE, ACTUAL MAY VARY.

Disclaimer: Sizes and Dimensions are Approximate, Actual May Vary.

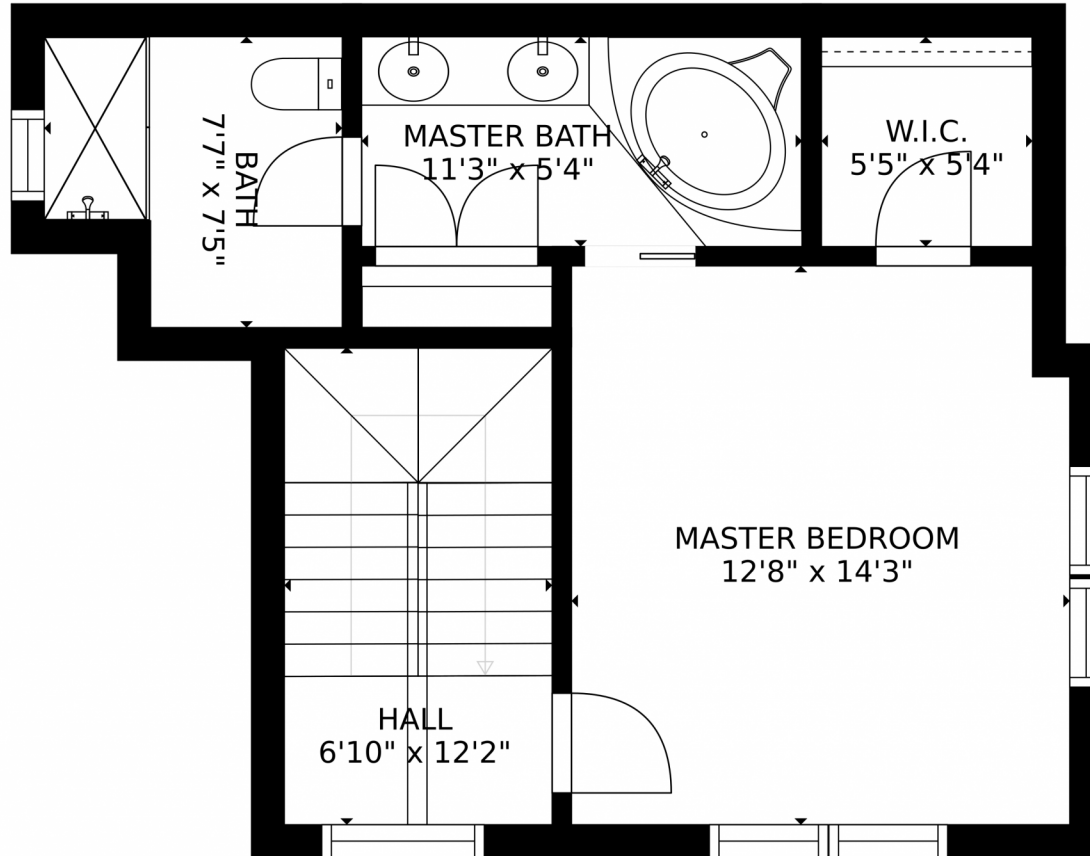


Clare Day
720-341-7456
homes@clare-day.com
<https://www.dayluxehomes.com/>



Scan code
for more
property
details

403 Antler Way, Winter Park, CO 80482 – 2nd Level



GROSS INTERNAL AREA
FLOOR 1: 637 sq. ft. FLOOR 2: 694 sq. ft.
FLOOR 3: 431 sq. ft. EXCLUDED AREAS:
PATIO: 156 sq. ft. BALCONY: 147 sq. ft.
PORCH: 57 sq. ft. GARAGE: 228 sq. ft.
TOTAL: 1762 sq. ft.
SIZES AND DIMENSIONS ARE APPROXIMATE, ACTUAL MAY VARY.

Disclaimer: Sizes and Dimensions are Approximate, Actual May Vary.



Clare Day
720-341-7456
homes@clare-day.com
<https://www.dayluxehomes.com/>

