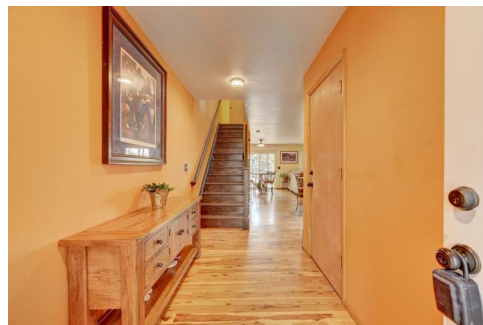




1919 S Kipling Street
 Lakewood, CO 80227
COMMUNITY: Hideaway Heights

MLS # 8494139
PRICE \$489,000



Condominium



2340 SQFT



3 Beds



4/1 Baths



2 Car

PROPERTY DETAILS

LOCATION LOCATION LOCATION! Welcome to your new Oasis in Hideaway Heights! Its a rare chance to find one of these townhomes on the market. Lots of living space and tons of private outdoor space and walkout basement.



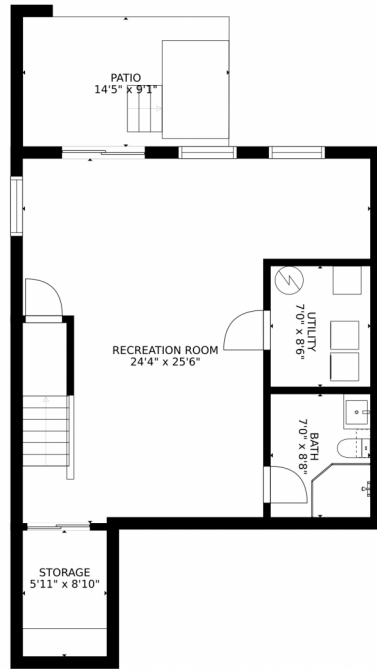
Julie Leins
 720-474-0928
 julieleins@kw.com
<https://coloradohomesdreamteam.com>



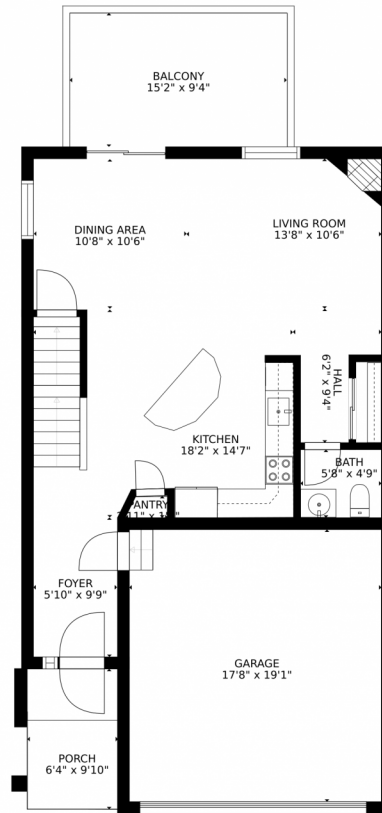
Scan code
 for more
 property
 details



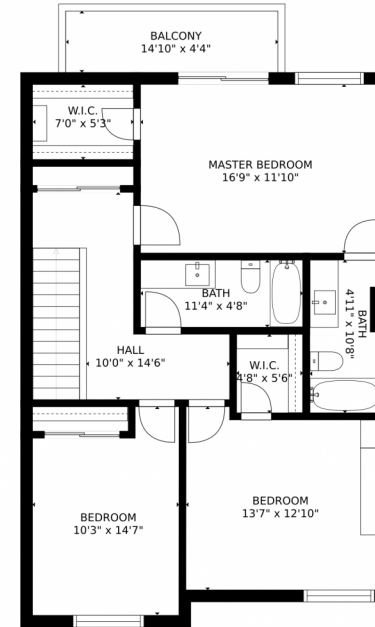
1919 S Kipling Street, Lakewood, CO 80227 – All Levels



FLOOR 1



FLOOR 2



FLOOR 3

GROSS INTERNAL AREA
 FLOOR 1: 669 sq. ft. FLOOR 2: 668 sq. ft.
 FLOOR 3: 879 sq. ft. EXCLUDED AREAS:
 PATIO: 131 sq. ft. BALCONY: 206 sq. ft.
 PORCH: 62 sq. ft. GARAGE: 336 sq. ft.
 TOTAL: 2217 sq. ft.
SIZES AND DIMENSIONS ARE APPROXIMATE, ACTUAL MAY VARY.

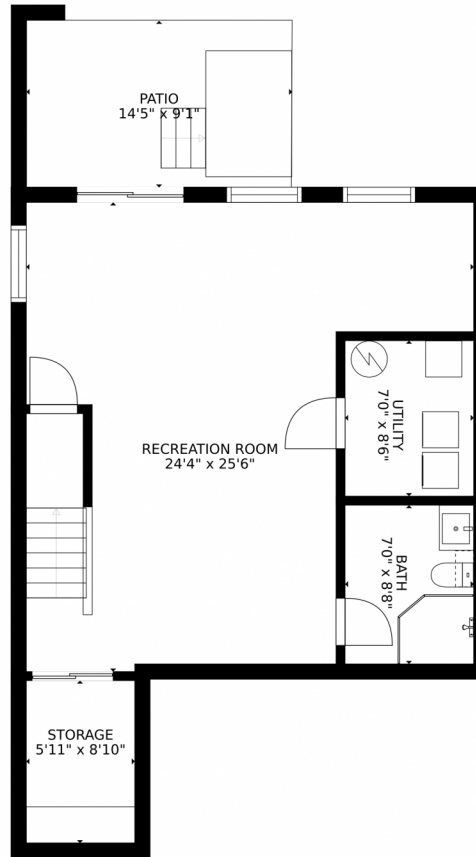
Disclaimer: Sizes and Dimensions are Approximate, Actual May Vary.



Julie Leins
 720-474-0928
 julieleins@kw.com
<https://coloradohomesdreamteam.com>



1919 S Kipling Street, Lakewood, CO 80227 – Lower Level



GROSS INTERNAL AREA
FLOOR 1: 669 sq. ft. FLOOR 2: 668 sq. ft.
FLOOR 3: 879 sq. ft. EXCLUDED AREAS:
PATIO: 131 sq. ft. BALCONY: 206 sq. ft.
PORCH: 62 sq. ft. GARAGE: 336 sq. ft.
TOTAL: 2217 sq. ft.
SIZES AND DIMENSIONS ARE APPROXIMATE, ACTUAL MAY VARY.

Disclaimer: Sizes and Dimensions are Approximate, Actual May Vary.



Julie Leins

720-474-0928

julieleins@kw.com

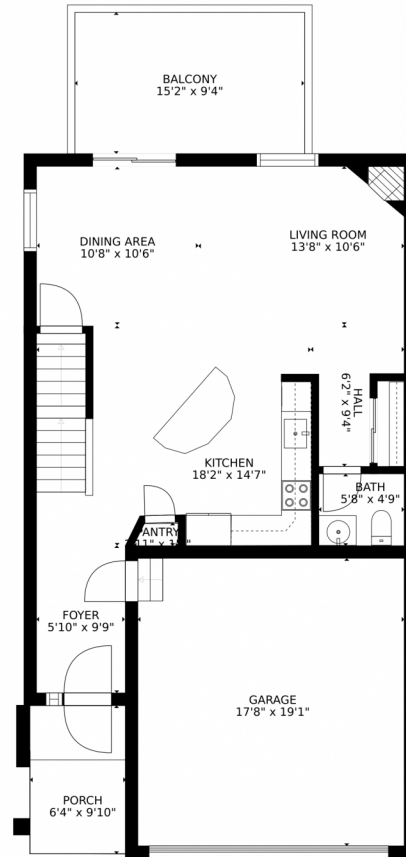
<https://coloradohomesdreamteam.com>



Scan code
for more
property
details



1919 S Kipling Street, Lakewood, CO 80227 – Main Level



GROSS INTERNAL AREA
FLOOR 1: 669 sq. ft. FLOOR 2: 668 sq. ft.
FLOOR 3: 879 sq. ft. EXCLUDED AREAS:
PATIO: 131 sq. ft. BALCONY: 206 sq. ft.
PORCH: 62 sq. ft. GARAGE: 336 sq. ft.
TOTAL: 2217 sq. ft.
SIZES AND DIMENSIONS ARE APPROXIMATE, ACTUAL MAY VARY.

Disclaimer: Sizes and Dimensions are Approximate, Actual May Vary.



Julie Leins

720-474-0928

julieleins@kw.com

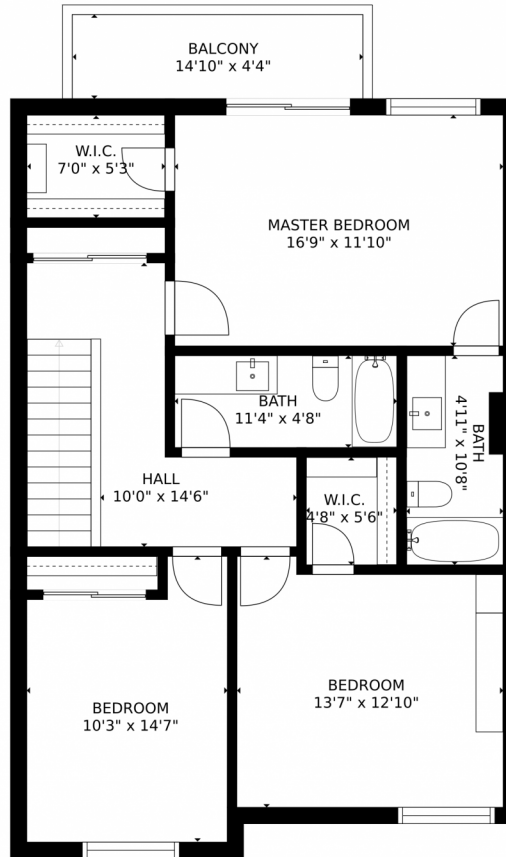
<https://coloradohomesdreamteam.com>



Scan code
for more
property
details



1919 S Kipling Street, Lakewood, CO 80227 – 2nd Level



GROSS INTERNAL AREA
FLOOR 1: 669 sq. ft. FLOOR 2: 668 sq. ft.
FLOOR 3: 879 sq. ft. EXCLUDED AREAS:
PATIO: 131 sq. ft. BALCONY: 206 sq. ft.
PORCH: 62 sq. ft. GARAGE: 336 sq. ft.
TOTAL: 2217 sq. ft.
SIZES AND DIMENSIONS ARE APPROXIMATE, ACTUAL MAY VARY.

Disclaimer: Sizes and Dimensions are Approximate, Actual May Vary.



Julie Leins

720-474-0928

julieleins@kw.com

<https://coloradohomesdreamteam.com>



Scan code
for more
property
details

