



Single Family



5483 SQFT



5 Beds



4/1 Baths



3 Car



2.5 Acre

PROPERTY DETAILS

~Turn Key ready home!! Location, location! Look no further for acreage! Right in the heart of Windsor/Loveland! This home is perfect in every way! This home is designed for entertaining, from the fun friendly volleyball courts and horseshoe pits in the back yard, to the large custom patio with outdoor fireplace and your new large family sized HOT TUB! This 5300+ SQ ft home has a main floor home office beautifully detailed kitchen, and spacious eat in kitchen nook. Open concept family room with large stately windows for a relaxing view of your 2.5 acres. Plenty of room awaits you with 5 bedrooms and 5 bathrooms, plus a full size kitchen in the finished basement. The master bedroom boasts a fireplace nicely positioned to enjoy soaking in the master bath while enjoying the cozy fire.

This master has incredible views with large windows and enough space for a reading or just relaxing.... When it comes time to hit the gym, look no further than your own lower level gym. Fully equipped with the home. You can also enjoy a beautifully appointed garden to grow all your favorite things from flowers to veggies! Make your dream Garage dreams become reality right here on Longs Peak Circle. Everything has its place in this custom one of a kind garage! This home is priced right! Don't miss out!



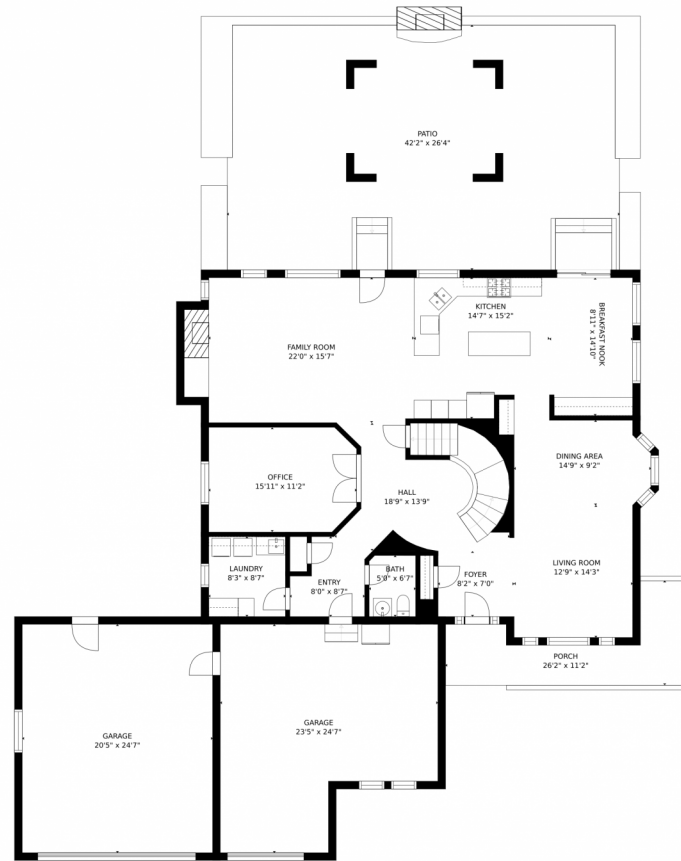
Denise Jones
 303-514-8428
 denise@petrelliteam.com



Scan code
 for more
 property
 details



8882 Longs Peak Circle, Windsor, CO 80550 – Main Level



GROSS INTERNAL AREA
FLOOR 1: 1575 sq. ft. FLOOR 2: 1725 sq. ft
FLOOR 3: 1638 sq. ft. EXCLUDED AREAS:
PATIO: 1109 sq. ft. PORCH: 164 sq. ft
GARAGE: 986 sq. ft
TOTAL: 4937 sq. ft
SIZES AND DIMENSIONS ARE APPROXIMATE, ACTUAL MAY VARY.

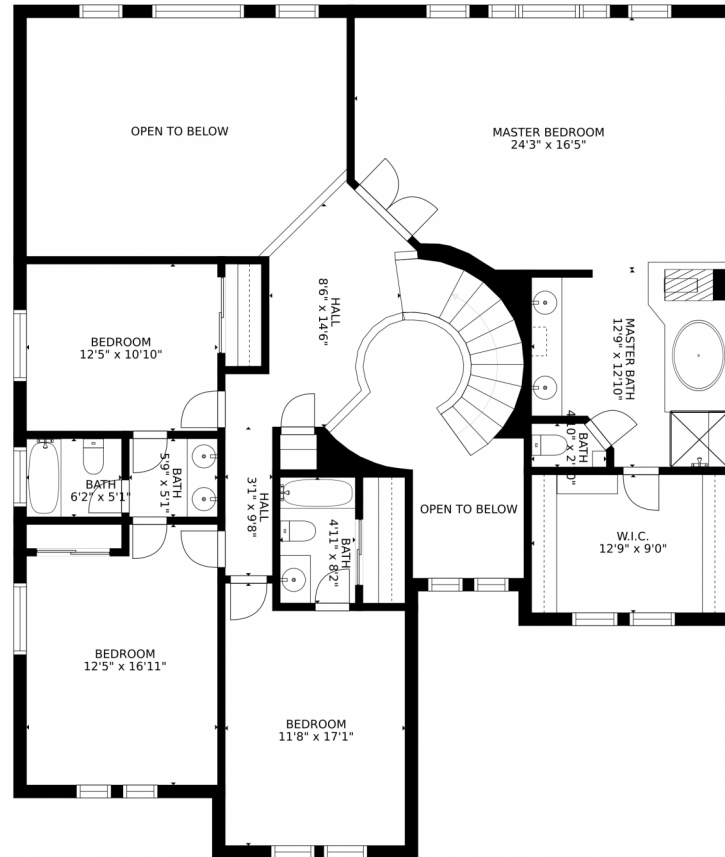
Disclaimer: Sizes and Dimensions are Approximate, Actual May Vary.



Denise Jones
303-514-8428
denise@petrelliteam.com



8882 Longs Peak Circle, Windsor, CO 80550 – Upper Level



GROSS INTERNAL AREA
FLOOR 1: 1575 sq. ft. FLOOR 2: 1725 sq. ft.
FLOOR 3: 1638 sq. ft. EXCLUDED AREAS:
PATIO: 1109 sq. ft. PORCH: 164 sq. ft.
GARAGE: 986 sq. ft.
TOTAL: 4937 sq. ft.
SIZES AND DIMENSIONS ARE APPROXIMATE, ACTUAL MAY VARY.

Disclaimer: Sizes and Dimensions are Approximate, Actual May Vary.



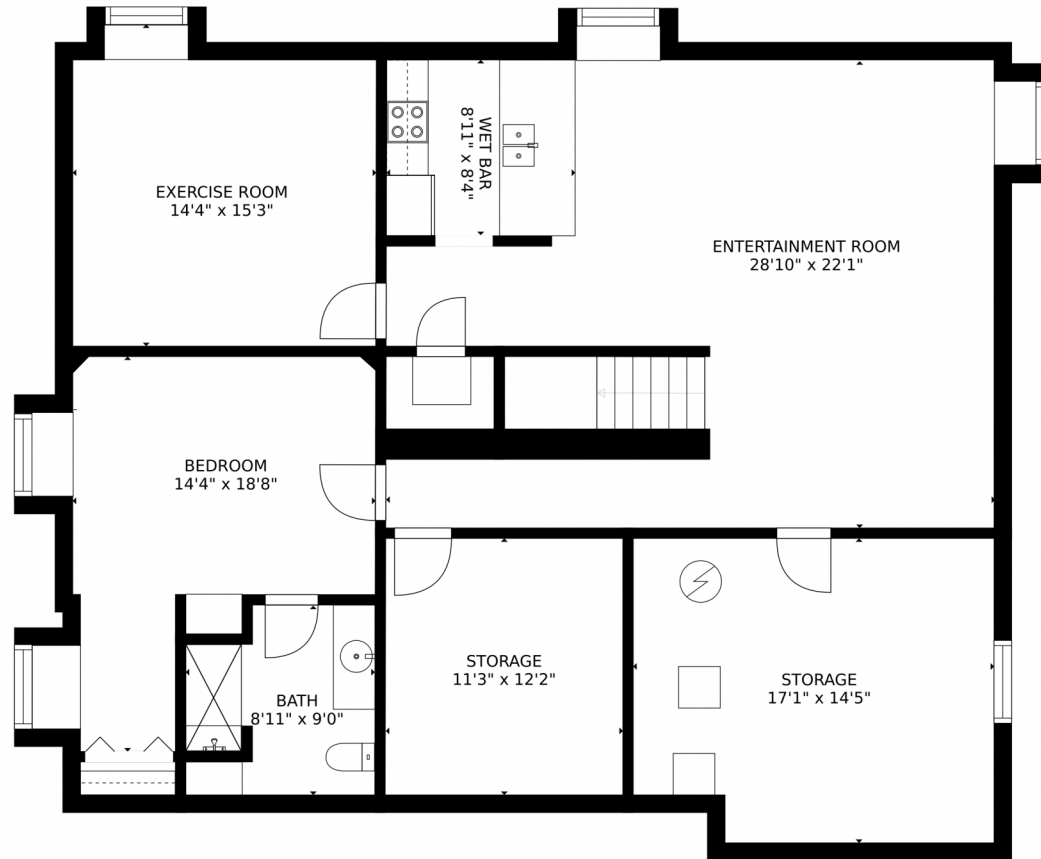
Denise Jones
303-514-8428
denise@petrelliteam.com



Scan code for more property details



8882 Longs Peak Circle, Windsor, CO 80550 – Lower Level



GROSS INTERNAL AREA
FLOOR 1: 1575 sq. ft. FLOOR 2: 1725 sq. ft.
FLOOR 3: 1638 sq. ft. EXCLUDED AREAS:
PATIO: 1109 sq. ft. PORCH: 164 sq. ft.
GARAGE: 986 sq. ft.
TOTAL: 4937 sq. ft.
SIZES AND DIMENSIONS ARE APPROXIMATE, ACTUAL MAY VARY.

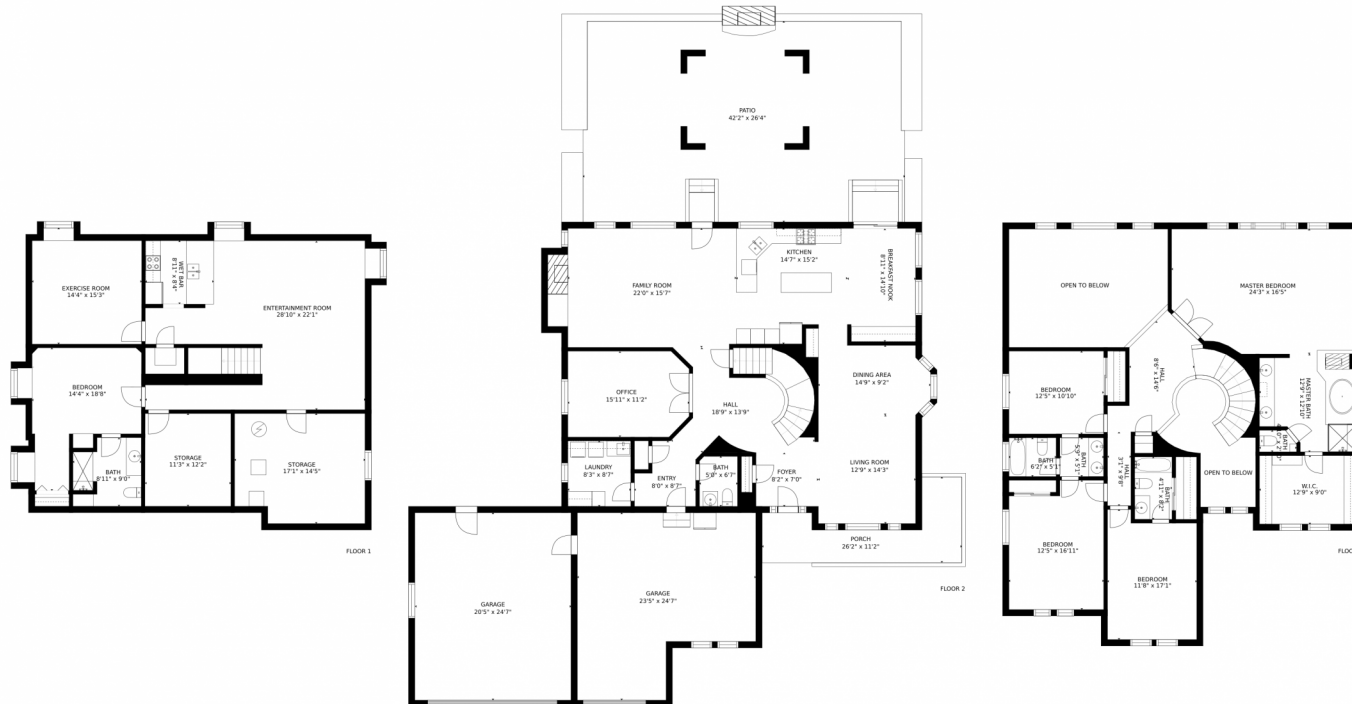
Disclaimer: Sizes and Dimensions are Approximate, Actual May Vary.



Denise Jones
303-514-8428
denise@petrelliteam.com



8882 Longs Peak Circle, Windsor, CO 80550 – All Levels



GROSS INTERNAL AREA
FLOOR 1: 1575 sq. ft. FLOOR 2: 1725 sq. ft.
FLOOR 3: 1638 sq. ft. EXCLUDED AREAS:
PATIO: 1109 sq. ft. PORCH: 164 sq. ft.
GARAGE: 986 sq. ft.
TOTAL: 4937 sq. ft.
SIZES AND DIMENSIONS ARE APPROXIMATE, ACTUAL MAY VARY.

Disclaimer: Sizes and Dimensions are Approximate, Actual May Vary.



Denise Jones
303-514-8428
denise@petrelliteam.com

