



3160 Interlocken Drive  
Evergreen, CO 80439

MLS # 3790485  
PRICE \$985,000

Here is the Hiwan Home You've Been Waiting For! Updated 5b/3b with .88 acres.



Single Family   3002 SQFT   5 Beds   1 Baths   2 Car   0.88 Acre

## PROPERTY DETAILS

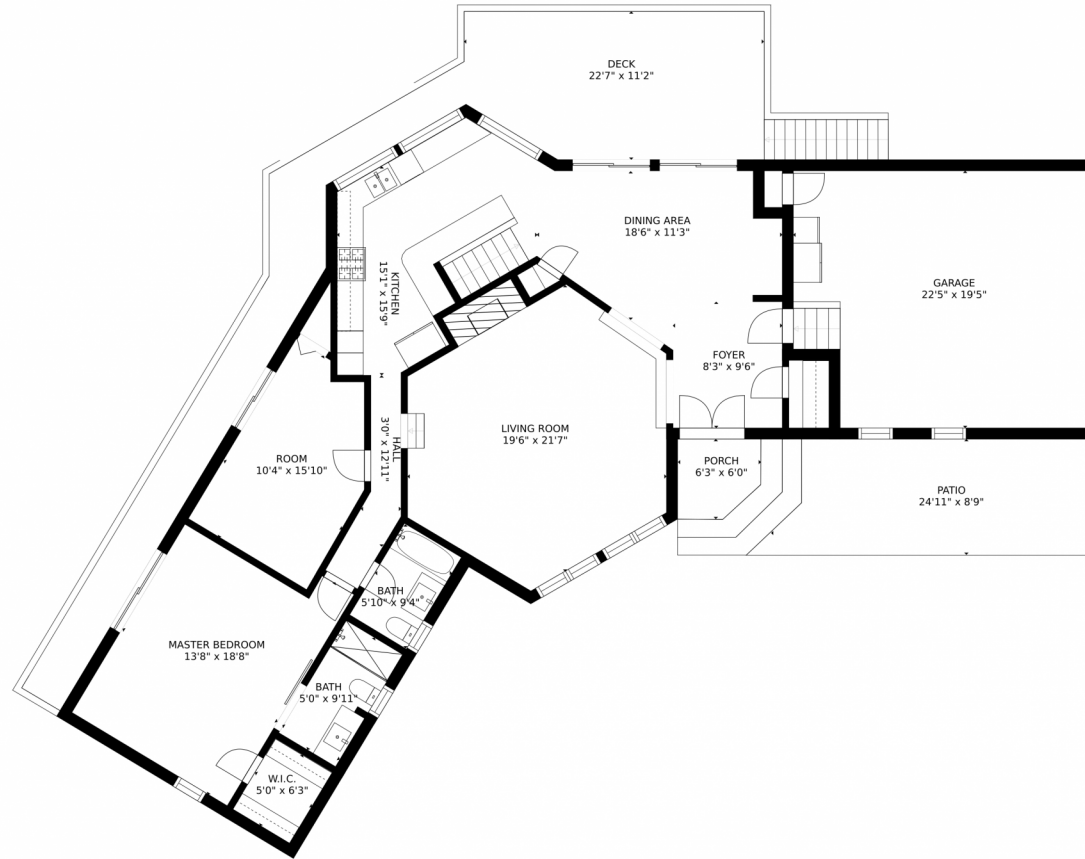
Don't be fooled by it's modest street profile, this charming late 60's Hiwan home is updated and just the right size. At a little over 3000 square feet, this 5 bedroom, 3 bathroom, walk-out ranch is well laid out and lives large with open floor plan and tons of outdoor space. New interior paint, carpet, whole house fan, primary bath, wet bar in the family room, and upper deck are added bonuses. Many other updated features. Large lot with flat usable areas and fully fenced. Beautiful views of Bear Mountain from the upper wrap around deck and kitchen windows. The lower level is a full daylight walkout with a sauna and family room including a wet bar and moss rock fireplace. This north Evergreen location is an easy commute down the hill to Golden or Denver (5.6 miles to I-70). Top rated schools, groceries and restaurants are minutes away. Recreational opportunities abound, Elk Meadow Open Space is less than a 1/2 mile, Evergreen lake less than 3 and 38 miles to Loveland ski area. Quick closing and possession possible. Be sure to check out the virtual and 3D tours. All information deemed reliable, Buyer to verify. Call Valli to schedule your showing 303-956-2437



**Valli Crockett**  
303-956-2437  
vallicrockett@yahoo.com  
<http://bergenpeakrealty.com/>



# 3160 Interlocken Drive, Evergreen, CO 80439 – Main



GROSS INTERNAL AREA  
FLOOR 1: 1142 sq. ft. FLOOR 2: 1446 sq. ft.  
EXCLUDED AREAS: , DECK: 757 sq. ft.  
PATIO: 675 sq. ft. PORCH: 34 sq. ft.  
GARAGE: 413 sq. ft.  
TOTAL: 2588 sq. ft.  
SIZES AND DIMENSIONS ARE APPROXIMATE, ACTUAL MAY VARY.

Disclaimer: Sizes and Dimensions are Approximate, Actual May Vary.

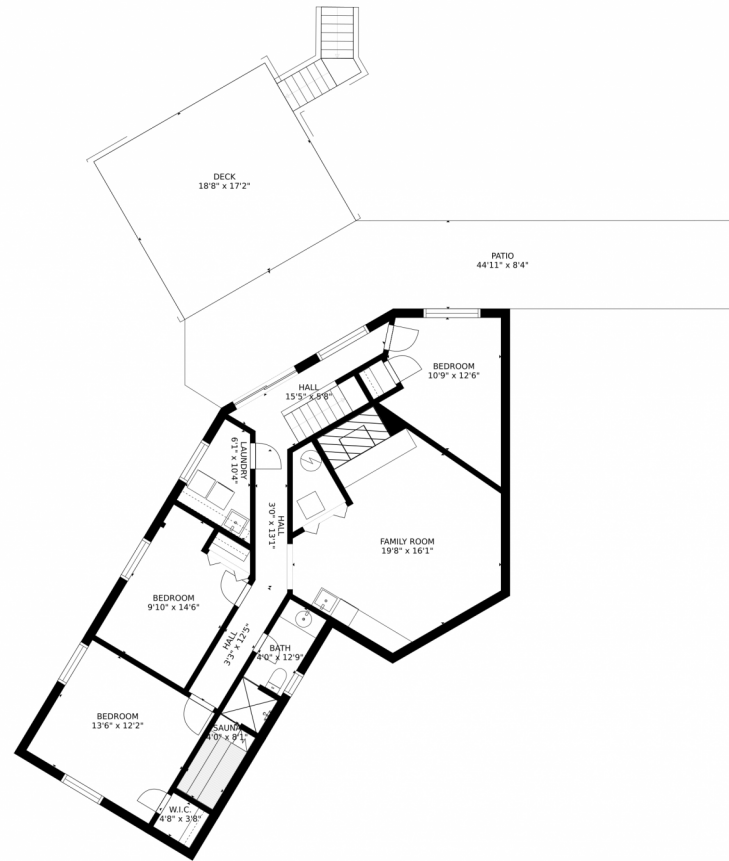


**Valli Crockett**  
303-956-2437  
vallicrockett@yahoo.com  
<http://bergenpeakrealty.com/>



Scan code  
for more  
property  
details

# 3160 Interlocken Drive, Evergreen, CO 80439 – Lower Level



GROSS INTERNAL AREA  
FLOOR 1: 1142 sq. ft. FLOOR 2: 1446 sq. ft.  
EXCLUDED AREAS: , DECK: 757 sq. ft.  
PATIO: 675 sq. ft. PORCH: 34 sq. ft.  
GARAGE: 413 sq. ft.  
TOTAL: 2588 sq. ft.  
SIZES AND DIMENSIONS ARE APPROXIMATE, ACTUAL MAY VARY.

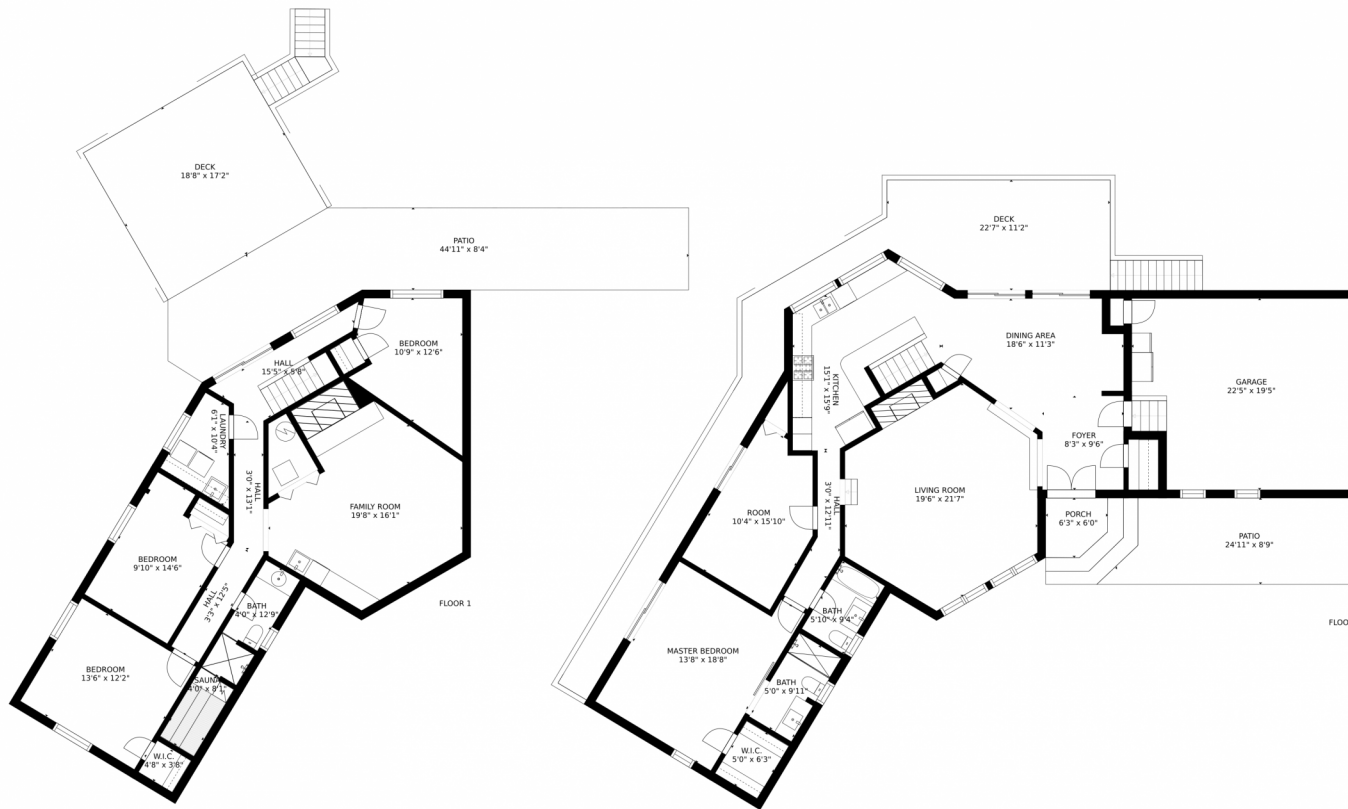
Disclaimer: Sizes and Dimensions are Approximate, Actual May Vary.



**Valli Crockett**  
303-956-2437  
vallicrockett@yahoo.com  
<http://bergenpeakrealty.com/>



# 3160 Interlocken Drive, Evergreen, CO 80439 – All Levels



GROSS INTERNAL AREA  
FLOOR 1: 1142 sq. ft. FLOOR 2: 1446 sq. ft  
EXCLUDED AREAS: , DECK: 757 sq. ft  
PATIO: 675 sq. ft. PORCH: 34 sq. ft  
GARAGE: 413 sq. ft  
TOTAL: 2588 sq. ft  
SIZES AND DIMENSIONS ARE APPROXIMATE, ACTUAL MAY VARY.

Disclaimer: Sizes and Dimensions are Approximate, Actual May Vary.



**Valli Crockett**  
303-956-2437  
vallicrockett@yahoo.com  
<http://bergenpeakrealty.com/>



Scan code for more property details

