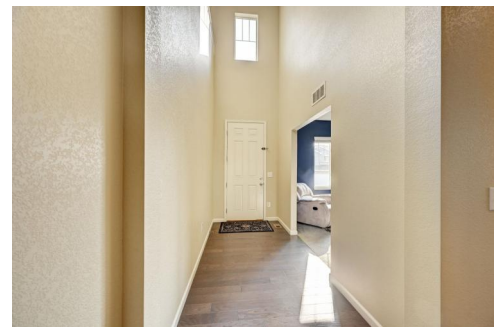




971 Mcmurdo Circle  
 Castle Rock, CO 80108

MLS # 5916725  
 PRICE \$649,995



Single Family   4039 SQFT   4 Beds   2/1 Baths   3 Car   0.14 Acre

## PROPERTY DETAILS

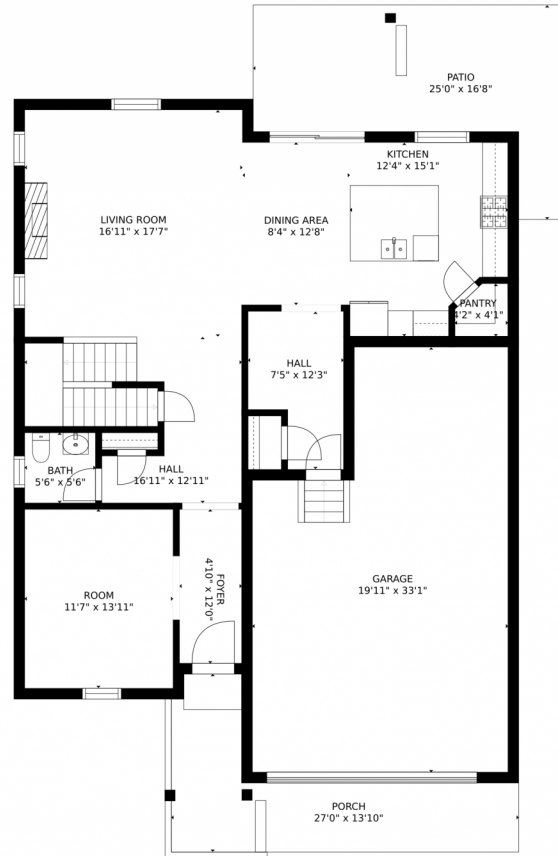
This is a beautiful two story home with a large foyer and a main floor study/office. The great room was built with a 2 ft. extension and has a gas fireplace and rear covered patio. Adjacent to the great room is an open dining area and gourmet kitchen featuring white linen cabinets, stainless steel gas appliances including a cooktop and double ovens, granite countertops and walk-in pantry.

The second floor along with the 3 bedroom and full bath has a impressive master suite with the builders 2 ft. extension, 5 piece master bath with double sinks and very large walk-in closet. There is also a large loft and a upstairs laundry room. There is a full unfinished basement with 9 ft foundation walls. There is a tandem garage that fits 3 auto's. There is 2 central air conditioning units, The home is in great condition. Buyers must verify the square footage, HOA rules, and schools. Please follow all pertinent COVID rules



**Ted Peterson Care Real Estate**  
 303-668-5533  
 ted@tedarla.com





GROSS INTERNAL AREA  
FLOOR 1: 1138 sq. ft, FLOOR 2: 1144 sq. ft  
FLOOR 3: 1581 sq. ft, EXCLUDED AREAS:  
PATIO: 276 sq. ft, PORCH: 190 sq. ft  
GARAGE: 576 sq. ft  
TOTAL: 3863 sq. ft  
SIZES AND DIMENSIONS ARE APPROXIMATE, ACTUAL MAY VARY.

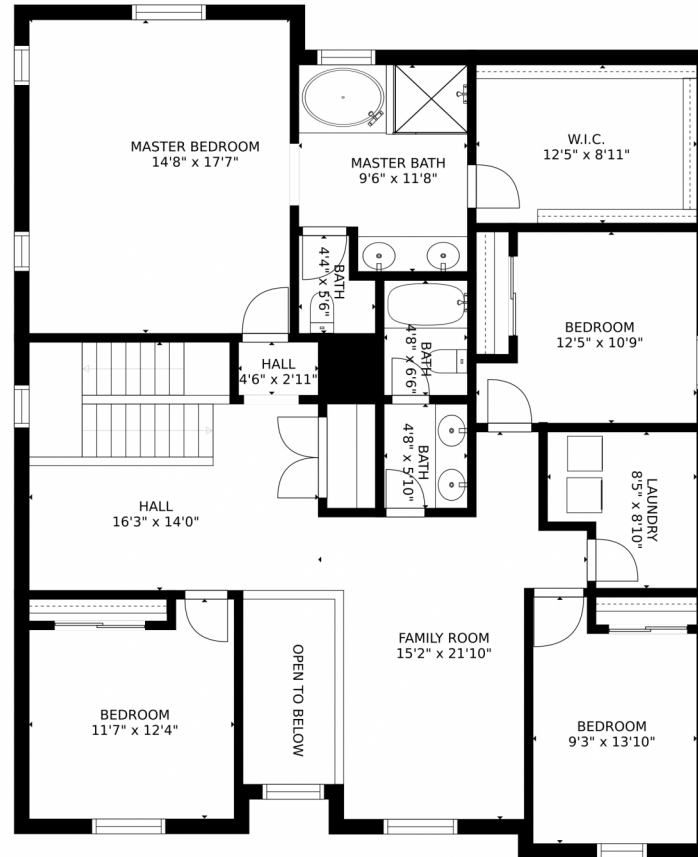
Disclaimer: Sizes and Dimensions are Approximate, Actual May Vary.



Ted Peterson Care Real Estate  
303-668-5533  
ted@tedarla.com



# 971 Mcmurdo Circle, Castle Rock, CO 80108 – 2nd Level



GROSS INTERNAL AREA  
FLOOR 1: 1138 sq. ft. FLOOR 2: 1144 sq. ft.  
FLOOR 3: 1581 sq. ft. EXCLUDED AREAS:  
PATIO: 276 sq. ft. PORCH: 190 sq. ft.  
GARAGE: 576 sq. ft.  
TOTAL: 3863 sq. ft.  
SIZES AND DIMENSIONS ARE APPROXIMATE, ACTUAL MAY VARY.

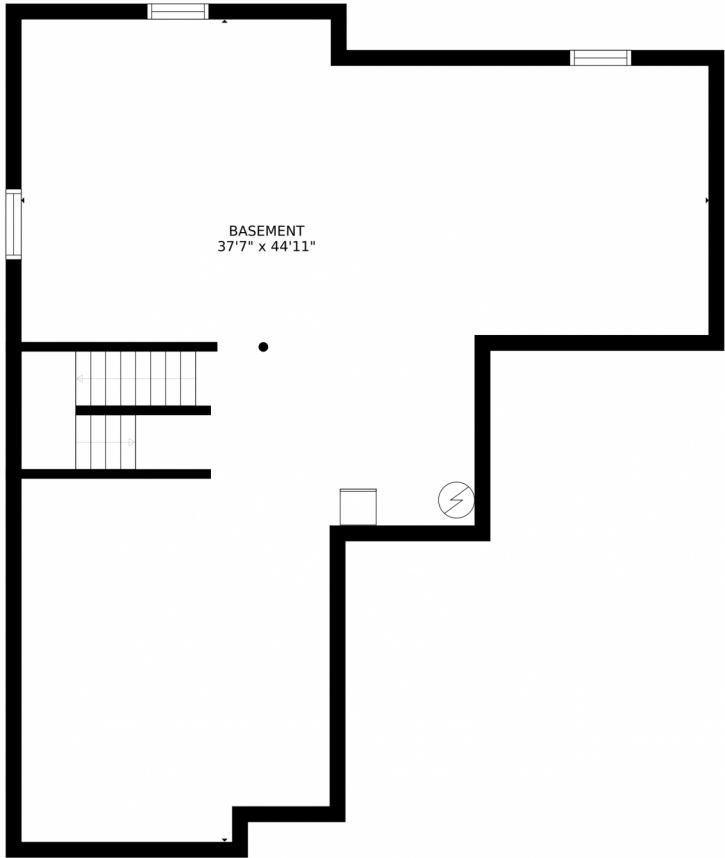
Disclaimer: Sizes and Dimensions are Approximate, Actual May Vary.



**Ted Peterson Care Real Estate**  
303-668-5533  
ted@tedarla.com



971 Mcmurdo Circle, Castle Rock, CO 80108 – Lower Level



GROSS INTERNAL AREA  
FLOOR 1: 1138 sq. ft, FLOOR 2: 1144 sq. ft  
FLOOR 3: 1581 sq. ft, EXCLUDED AREAS:  
PATIO: 276 sq. ft, PORCH: 190 sq. ft  
GARAGE: 576 sq. ft  
TOTAL: 3863 sq. ft  
SIZES AND DIMENSIONS ARE APPROXIMATE, ACTUAL MAY VARY.


Disclaimer: Sizes and Dimensions are Approximate, Actual May Vary.



**Ted Peterson Care Real Estate**  
303-668-5533  
ted@tedarla.com



Scan code  
for more  
property  
details



# 971 Mcmurdo Circle, Castle Rock, CO 80108 – All Levels



GROSS INTERNAL AREA  
FLOOR 1: 1138 sq. ft, FLOOR 2: 1144 sq. ft  
FLOOR 3: 1581 sq. ft, EXCLUDED AREAS:  
PATIO: 276 sq. ft, PORCH: 190 sq. ft  
GARAGE: 576 sq. ft  
TOTAL: 3863 sq. ft  
SIZES AND DIMENSIONS ARE APPROXIMATE, ACTUAL MAY VARY.

Disclaimer: Sizes and Dimensions are Approximate, Actual May Vary.



Ted Peterson Care Real Estate  
303-668-5533  
ted@tedarla.com

