

Convenient Mountain Living!



 Single Family  2522 SQFT  3 Beds  2 Baths  2 Car  1.19 Acre

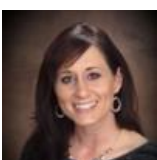
PROPERTY DETAILS

Conveniently located in Aspen Park with easy access to Hwy 285, grocery stores, restaurants and schools.

Mid-century modern design with tons of natural light and large windows.

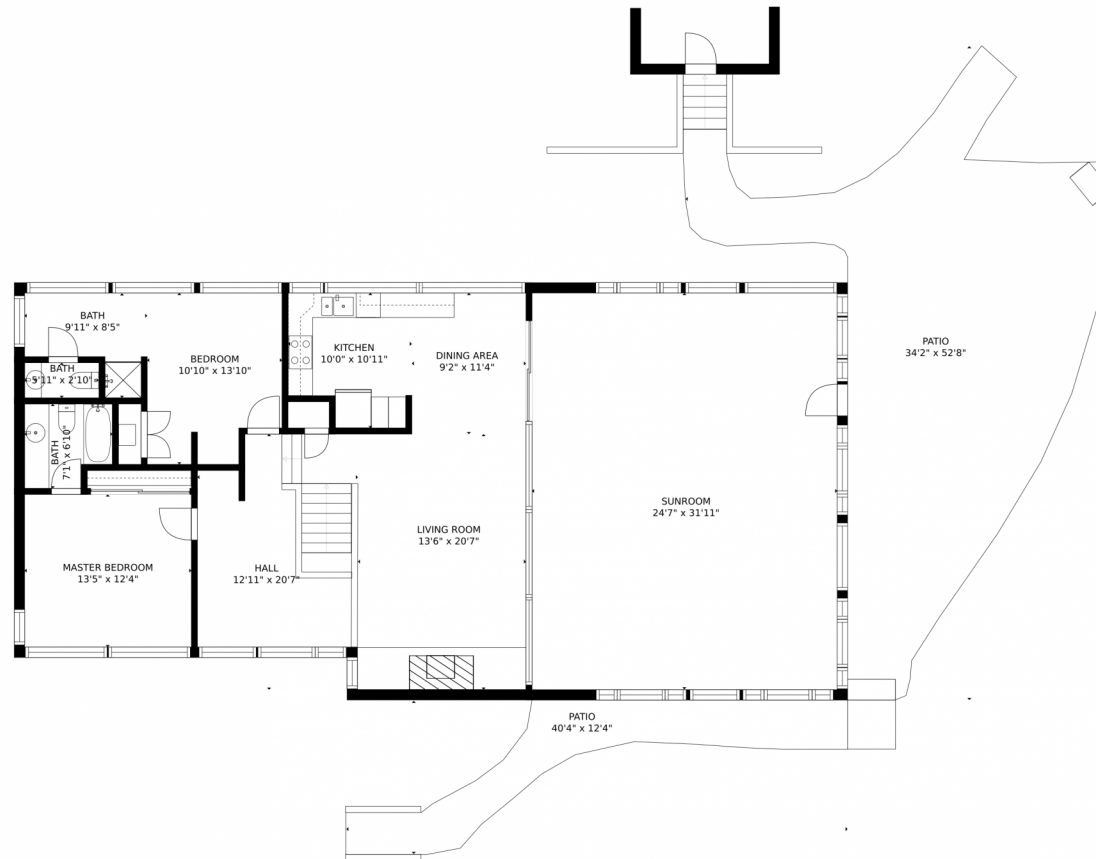
Private, large, gently sloping yard and patio area for entertaining. This is rare find in the mountains!

County maintained road leads to property located on a cul-de-sac.



Desiree Stephenson
720-987-1959
desireestephenson@kw.com





GROSS INTERNAL AREA
FLOOR 1: 579 sq. ft, FLOOR 2: 1999 sq. ft
EXCLUDED AREAS: , PORCH: 435 sq. ft
GARAGE: 519 sq. ft, PATIO: 914 sq. ft
TOTAL: 2579 sq. ft
SIZES AND DIMENSIONS ARE APPROXIMATE, ACTUAL MAY VARY.

Disclaimer: Sizes and Dimensions are Approximate, Actual May Vary.

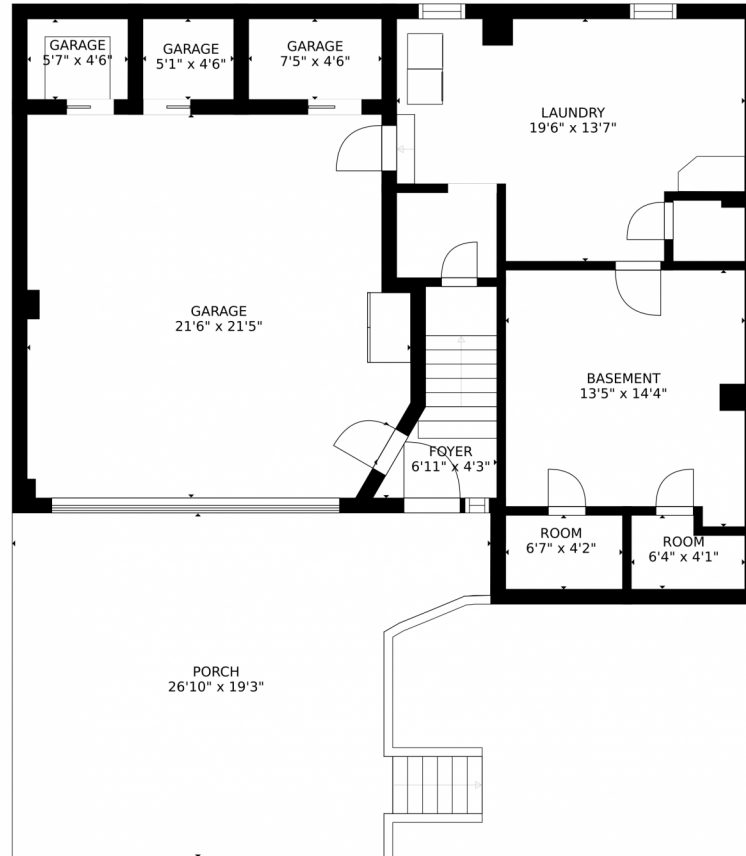


Desiree Stephenson
720-987-1959
desireestephenson@kw.com



Scan code
for more
property
details

26006 Rea Avenue, Conifer, CO 80433 – Lower Level



GROSS INTERNAL AREA
FLOOR 1: 579 sq. ft, FLOOR 2: 1999 sq. ft
EXCLUDED AREAS: , PORCH: 435 sq. ft
GARAGE: 519 sq. ft, PATIO: 914 sq. ft
TOTAL: 2579 sq. ft
SIZES AND DIMENSIONS ARE APPROXIMATE, ACTUAL MAY VARY.

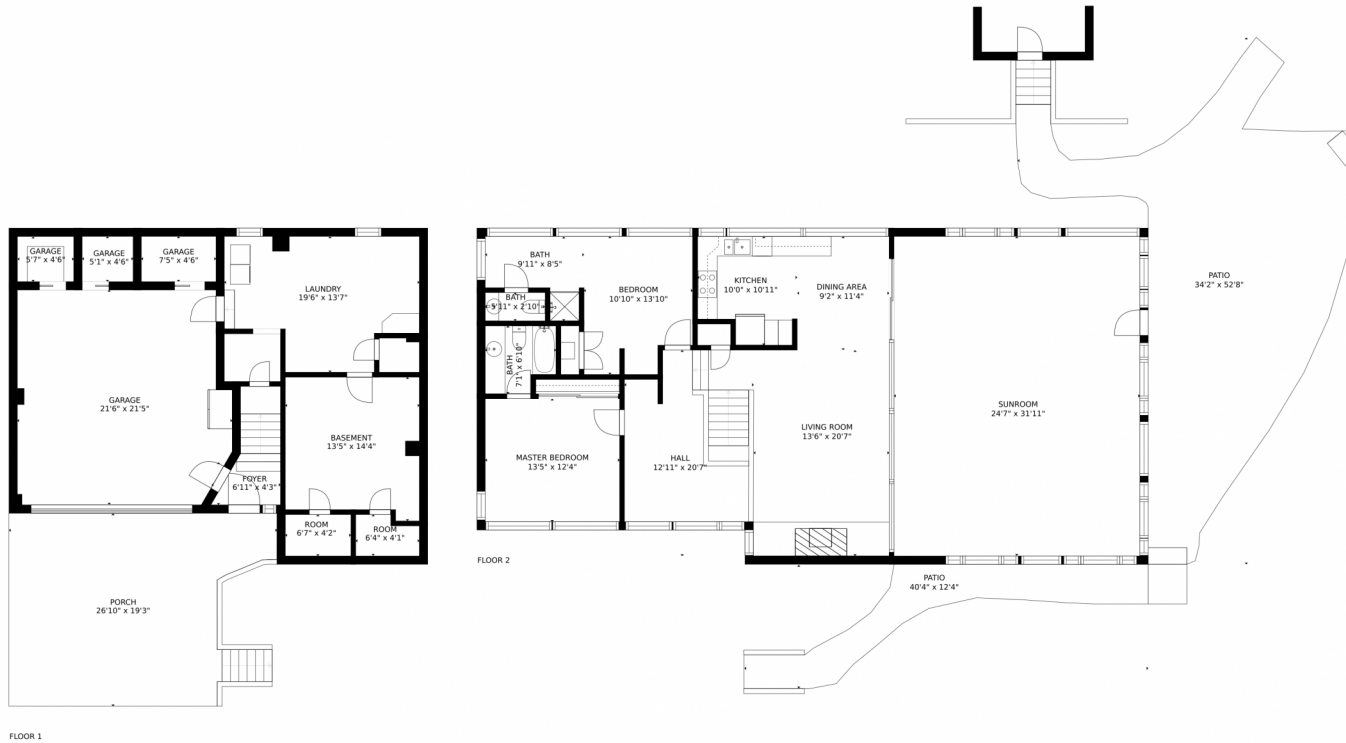
Disclaimer: Sizes and Dimensions are Approximate, Actual May Vary.



Desiree Stephenson
720-987-1959
desireestephenson@kw.com



26006 Rea Avenue, Conifer, CO 80433 – All Levels



GROSS INTERNAL AREA
FLOOR 1: 579 sq. ft, FLOOR 2: 1999 sq. ft
EXCLUDED AREAS: , PORCH: 435 sq. ft
GARAGE: 519 sq. ft, PATIO: 914 sq. ft
TOTAL: 2579 sq. ft
SIZES AND DIMENSIONS ARE APPROXIMATE, ACTUAL MAY VARY.

Disclaimer: Sizes and Dimensions are Approximate, Actual May Vary.



Desiree Stephenson
720-987-1959
desireestephenson@kw.com



Scan code
for more
property
details