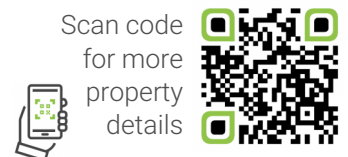




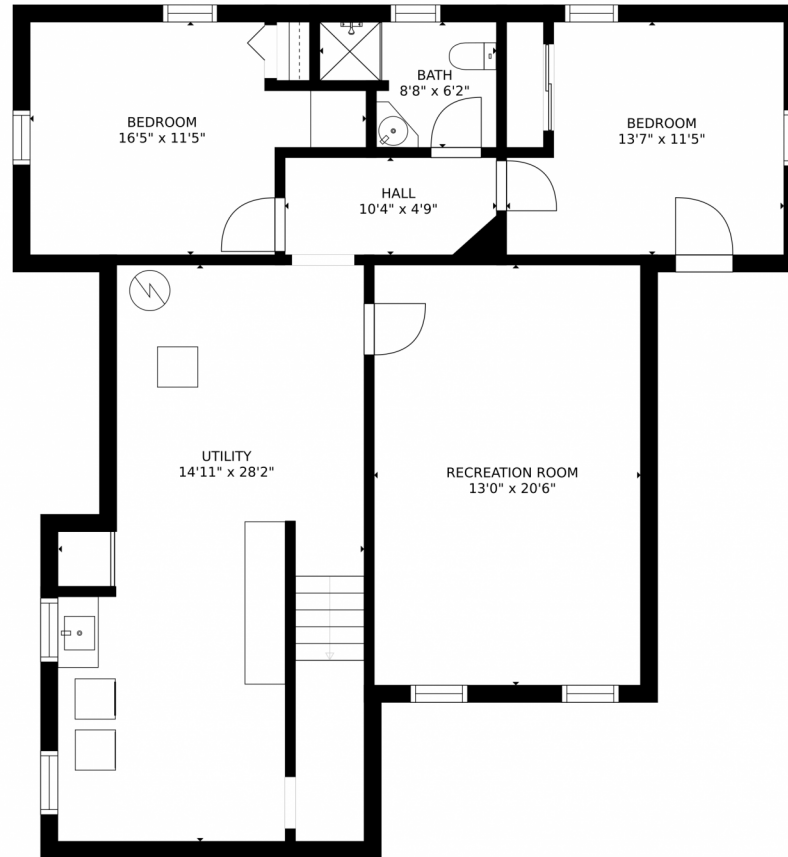
 Single Family  1257 SQFT



Tonie Benetti
303-210-7336
tonie@tbkrealstate.com
<https://www.tbkrealstate.com>



3835 North Carr Street, Wheat Ridge, CO 80033 — Lower Level



GROSS INTERNAL AREA
FLOOR 1: 1093 sq. ft., FLOOR 2: 1163 sq. ft.
EXCLUDED AREAS: , PATIO: 378 sq. ft.
PORCH: 45 sq. ft., GARAGE: 229 sq. ft.
TOTAL: 2257 sq. ft.
SIZES AND DIMENSIONS ARE APPROXIMATE, ACTUAL MAY VARY.

Disclaimer: Sizes and Dimensions are Approximate, Actual May Vary.

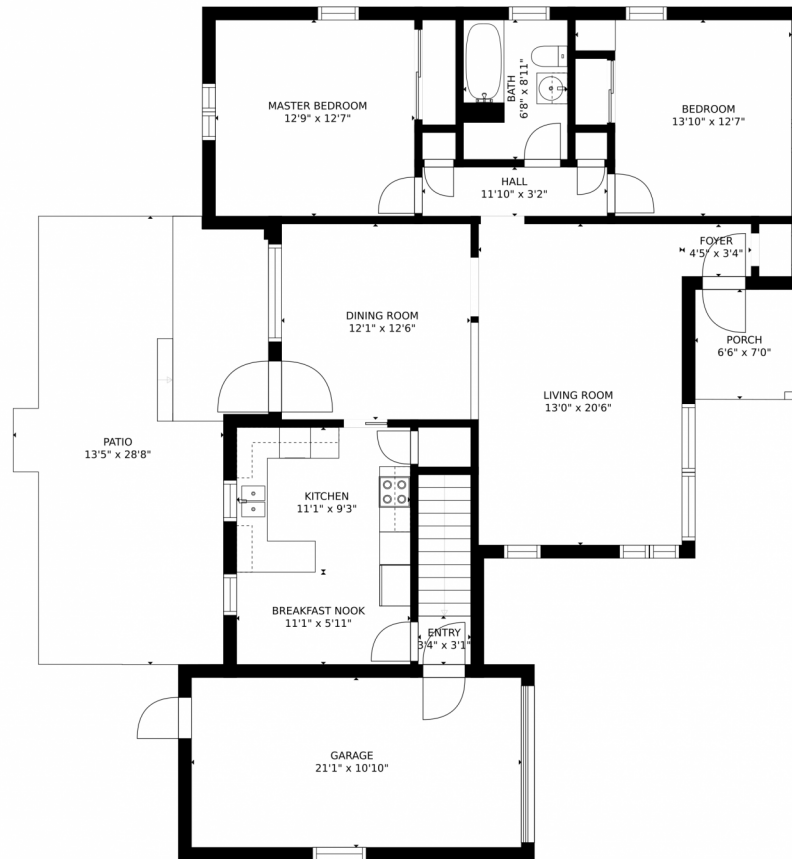


Tonie Benetti
303-210-7336
tonie@tbkrealstate.com
<https://www.tbkrealstate.com>



Scan code
for more
property
details

3835 North Carr Street, Wheat Ridge, CO 80033 – Main Floor



GROSS INTERNAL AREA
FLOOR 1: 1093 sq. ft, FLOOR 2: 1163 sq. ft
EXCLUDED AREAS: , PATIO: 378 sq. ft
PORCH: 45 sq. ft, GARAGE: 229 sq. ft
TOTAL: 2257 sq. ft
SIZES AND DIMENSIONS ARE APPROXIMATE, ACTUAL MAY VARY.

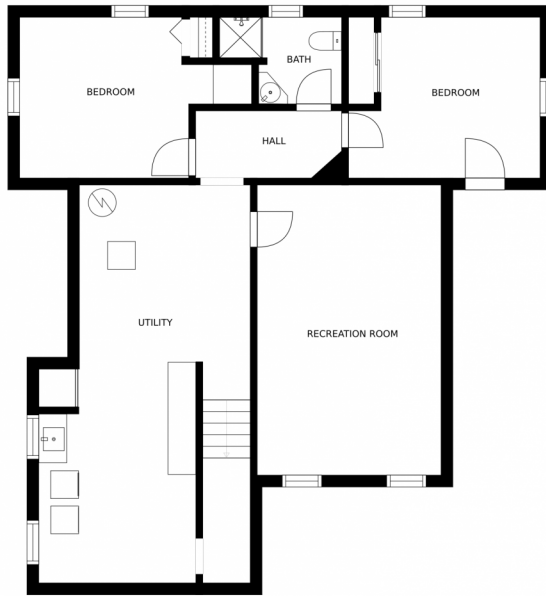
Disclaimer: Sizes and Dimensions are Approximate, Actual May Vary.



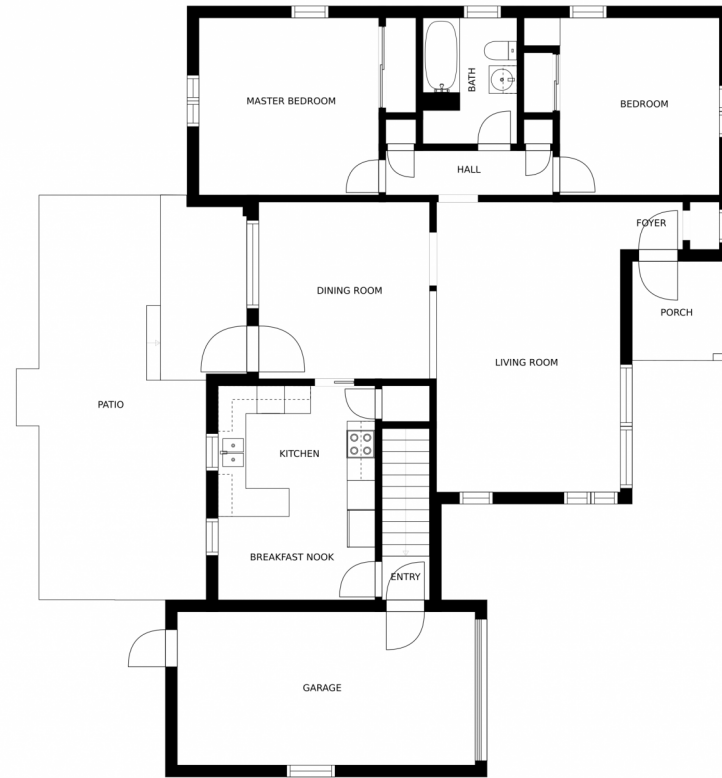
Tonie Benetti
303-210-7336
tonie@tbkrealstate.com
<https://www.tbkrealstate.com>



3835 North Carr Street, Wheat Ridge, CO 80033 – All Floors



FLOOR 1



FLOOR 2

SIZES AND DIMENSIONS ARE APPROXIMATE, ACTUAL MAY VARY.

Disclaimer: Sizes and Dimensions are Approximate, Actual May Vary.



Tonie Benetti
303-210-7336
tonie@tbkrealstate.com
<https://www.tbkrealstate.com>

