

3418 Gilpin Street  
Denver, CO 80205


COMMUNITY: Cole

MLS # 9279917

PRICE \$600,000



 Single Family

 1376 SQFT

 3 Beds

 1 Baths

 2 Car

## PROPERTY DETAILS

Recently updated in sought-after Cole Neighborhood! Less than 2 miles to Downtown, less than 1/2 mile to light rail. Open main level floor plan with modern details and historic charm! Photos coming Monday, August 16th. Contact listing agent for more information. Showings start Thursday, August 19th.



**Christie Lysaught**

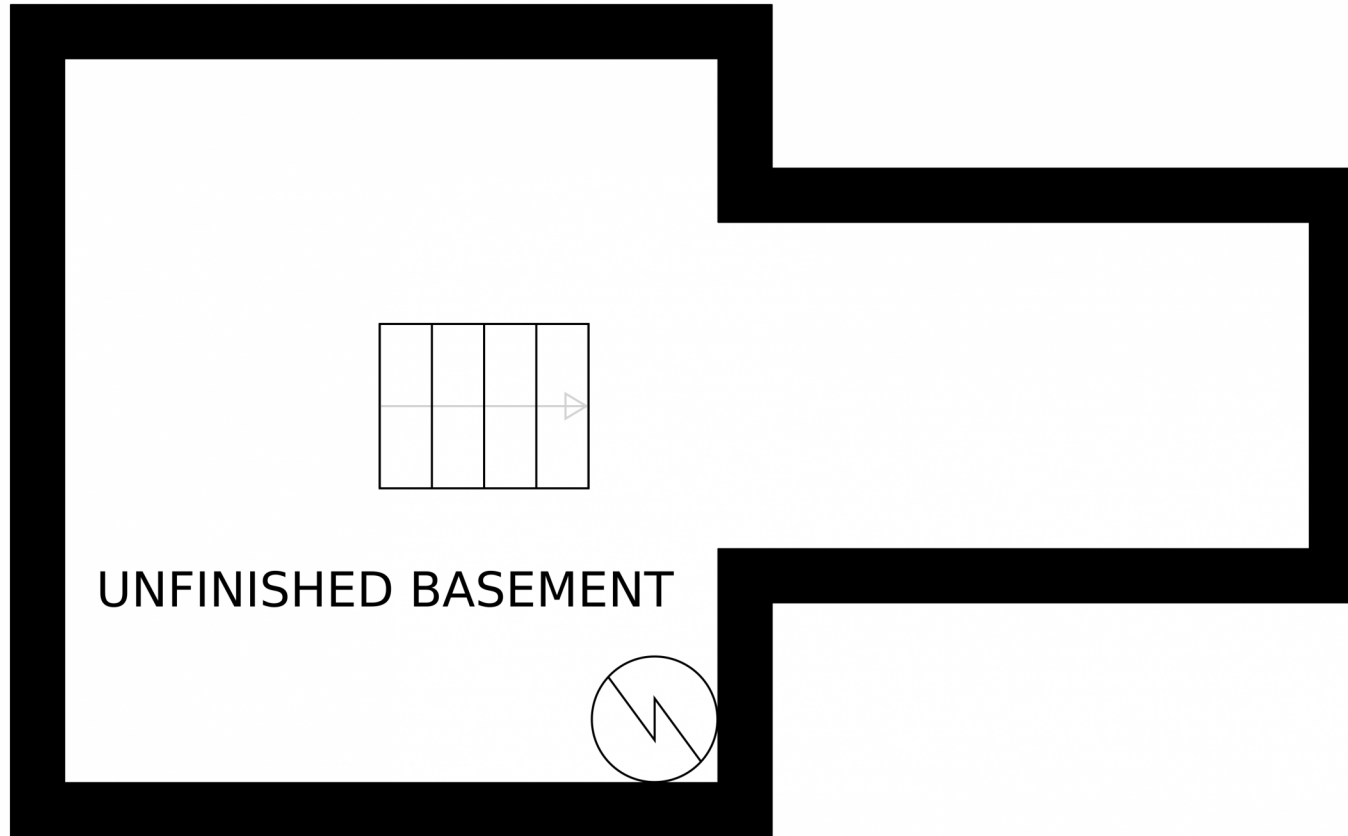
303-913-7539

[clysaught@livosir.com](mailto:clysaught@livosir.com)

<https://www.christielysaught.com/>

Scan code  
for more  
property  
details





GROSS INTERNAL AREA  
FLOOR 1: 0 sq. ft, FLOOR 2: 1325 sq. ft  
FLOOR 3: 366 sq. ft, EXCLUDED AREAS:  
UNFINISHED BASEMENT: 164 sq. ft, PATIO: 185 sq. ft  
PORCH: 98 sq. ft  
TOTAL: 1692 sq. ft  
SIZES AND DIMENSIONS ARE APPROXIMATE, ACTUAL MAY VARY.

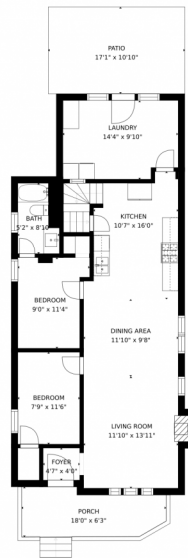
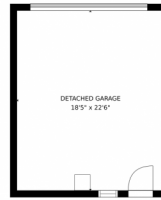
Disclaimer: Sizes and Dimensions are Approximate, Actual May Vary.



**Christie Lysaught**  
303-913-7539  
clysought@livosir.com  
<https://www.christielysaught.com/>



# 3418 Gilpin Street, Denver, CO 80205 – Main Floor



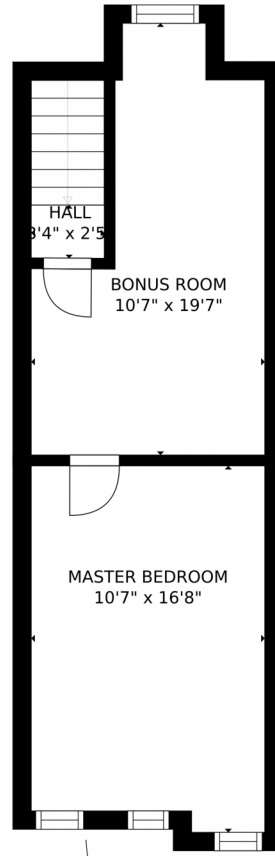
GROSS INTERNAL AREA  
FLOOR 1: 0 sq. ft. FLOOR 2: 1325 sq. ft.  
FLOOR 3: 366 sq. ft. EXCLUDED AREAS:  
UNFINISHED BASEMENT: 164 sq. ft. PATIO: 185 sq. ft.  
PORCH: 98 sq. ft.  
TOTAL: 1692 sq. ft.  
SIZES AND DIMENSIONS ARE APPROXIMATE, ACTUAL MAY VARY.

Disclaimer: Sizes and Dimensions are Approximate, Actual May Vary.



**Christie Lysaught**  
303-913-7539  
clysaupt@livosir.com  
<https://www.christielysaught.com/>





GROSS INTERNAL AREA  
FLOOR 1: 0 sq. ft. FLOOR 2: 1325 sq. ft.  
FLOOR 3: 366 sq. ft. EXCLUDED AREAS:  
UNFINISHED BASEMENT: 164 sq. ft. PATIO: 185 sq. ft.  
PORCH: 98 sq. ft.  
TOTAL: 1692 sq. ft.  
SIZES AND DIMENSIONS ARE APPROXIMATE, ACTUAL MAY VARY.

Disclaimer: Sizes and Dimensions are Approximate, Actual May Vary.



**Christie Lysaught**  
303-913-7539  
clysought@livosir.com  
<https://www.christielysaught.com/>



3418 Gilpin Street, Denver, CO 80205 – All Floors



SIZES AND DIMENSIONS ARE APPROXIMATE, ACTUAL MAY VARY.

Disclaimer: Sizes and Dimensions are Approximate, Actual May Vary.



**Christie Lysaught**  
303-913-7539  
clysaupt@livosir.com  
<https://www.christielysaupt.com/>

