



10902 Northglenn Drive  
Northglenn, CO 80233



Single Family



1700 SQFT

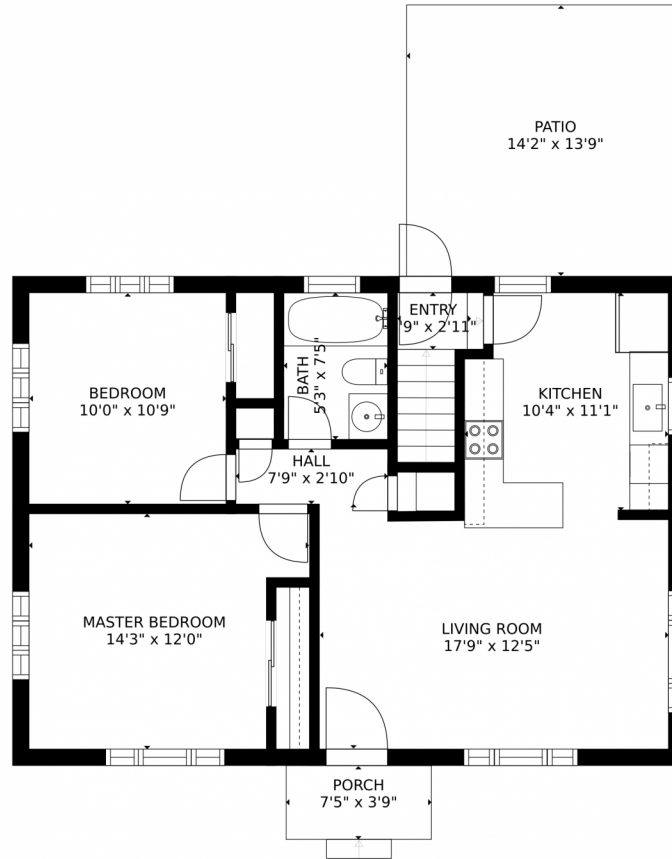


**Bryan Smith**  
720-936-6669  
bryanizm@yahoo.com



Scan code  
for more  
property  
details

# 10902 Northglenn Drive, Northglenn, CO 80233 – Main Level



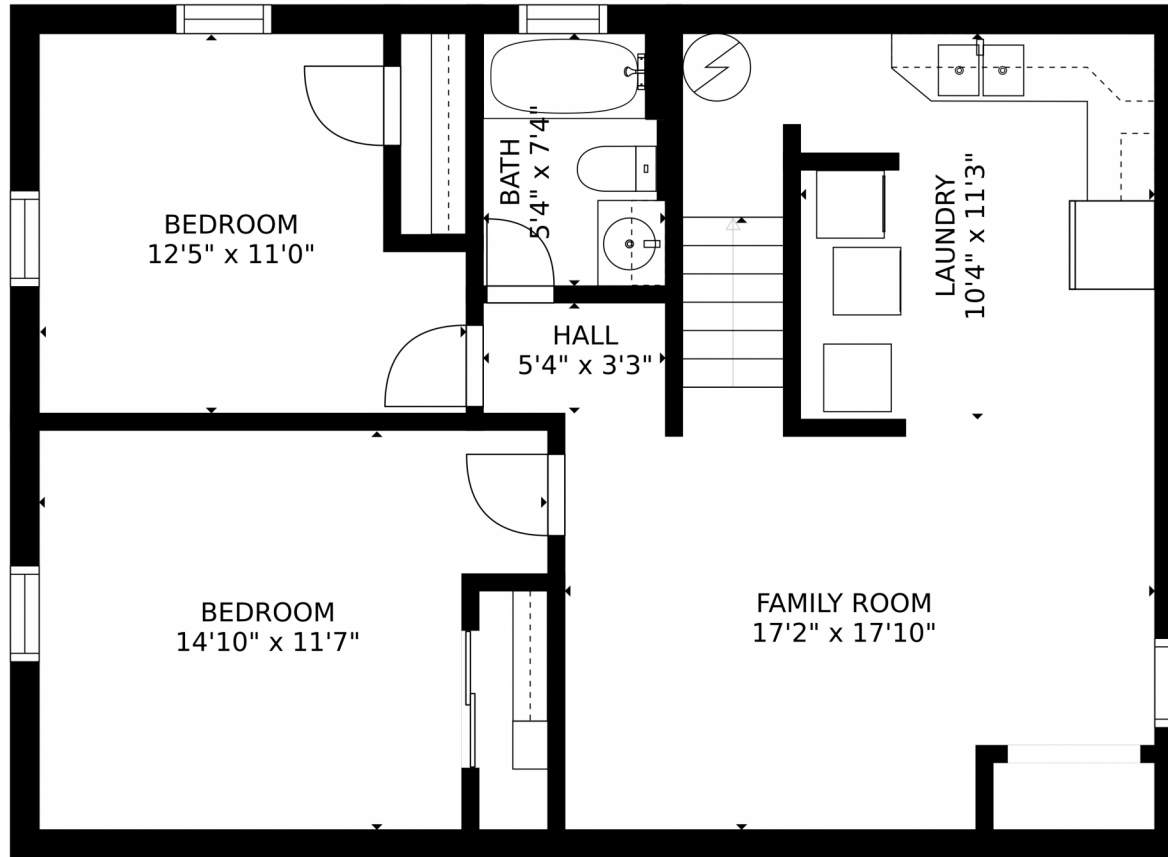
GROSS INTERNAL AREA  
FLOOR 1: 754 sq. ft. FLOOR 2: 754 sq. ft.  
EXCLUDED AREAS: , PATIO: 195 sq. ft  
PORCH: 28 sq. ft  
TOTAL: 1509 sq. ft  
SIZES AND DIMENSIONS ARE APPROXIMATE, ACTUAL MAY VARY.

Disclaimer: Sizes and Dimensions are Approximate, Actual May Vary.



**Bryan Smith**  
720-936-6669  
bryanizm@yahoo.com





GROSS INTERNAL AREA  
FLOOR 1: 754 sq. ft., FLOOR 2: 754 sq. ft.  
EXCLUDED AREAS: , PATIO: 195 sq. ft.  
PORCH: 28 sq. ft.  
TOTAL: 1509 sq. ft.  
SIZES AND DIMENSIONS ARE APPROXIMATE, ACTUAL MAY VARY.

Disclaimer: Sizes and Dimensions are Approximate, Actual May Vary.

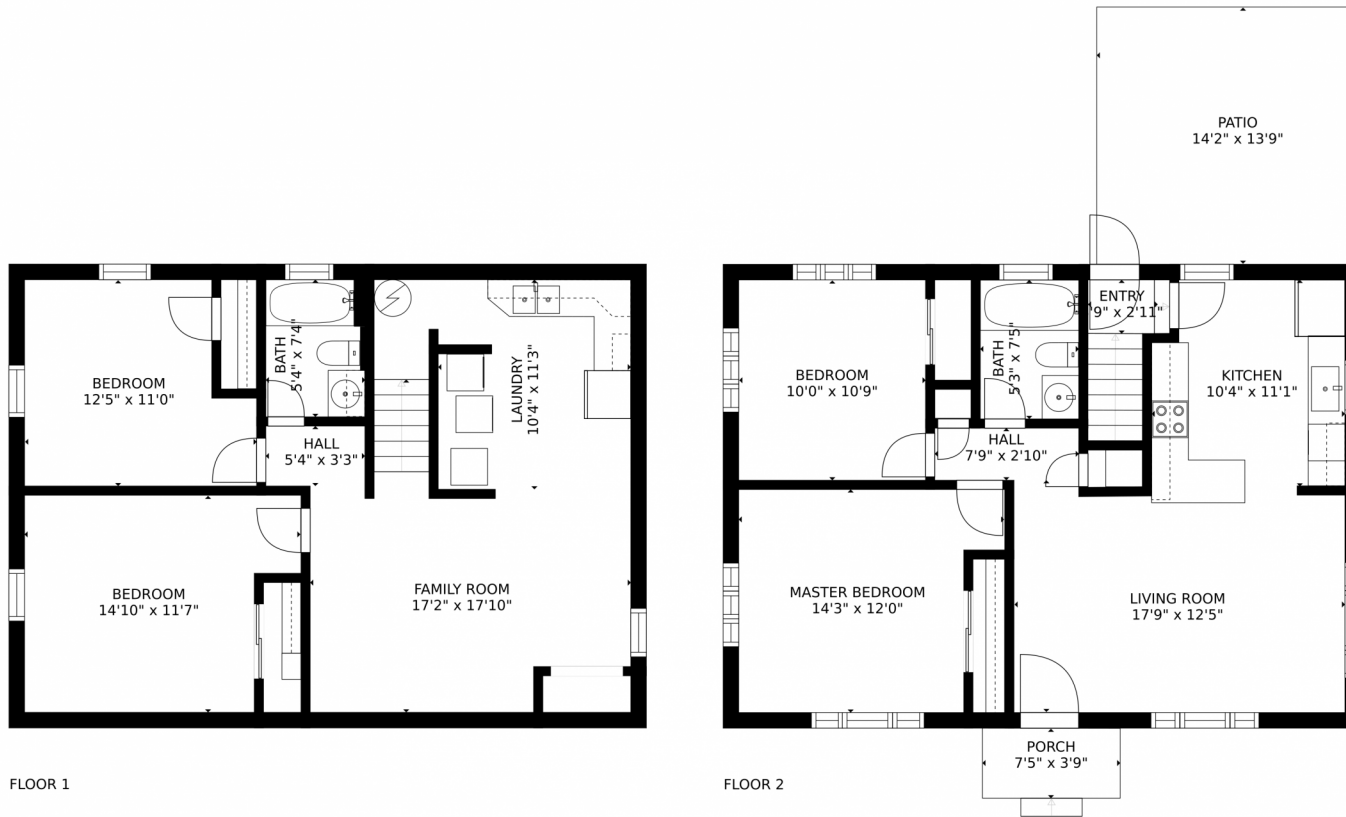


**Bryan Smith**  
720-936-6669  
bryanizm@yahoo.com





# 10902 Northglenn Drive, Northglenn, CO 80233 – All Levels



GROSS INTERNAL AREA  
FLOOR 1: 754 sq. ft, FLOOR 2: 754 sq. ft  
EXCLUDED AREAS: , PATIO: 195 sq. ft  
PORCH: 28 sq. ft  
TOTAL: 1509 sq. ft  
SIZES AND DIMENSIONS ARE APPROXIMATE, ACTUAL MAY VARY.

Disclaimer: Sizes and Dimensions are Approximate, Actual May Vary.



**Bryan Smith**  
720-936-6669  
bryanizm@yahoo.com



Scan code  
for more  
property  
details