



4 Bedroom 2 Bathroom Ranch with Oversized Deck



 Single Family  1946 SQFT  4 Beds  2 Baths  1 Car  0.2 Acre

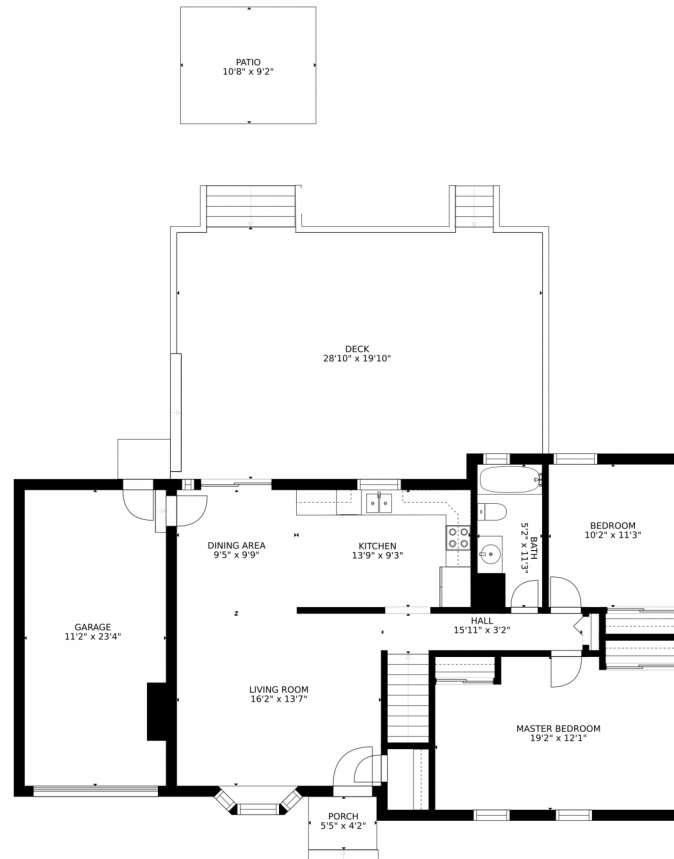
PROPERTY DETAILS

You'll love this charming ranch positioned on a quiet cul-de-sac just five minutes from a light rail station. The bay window ushers in an abundance of natural light. You can live entirely on the main floor, but if you need to spread out, the finished basement also offers a second family room along with two additional bedrooms and a second bathroom. The kitchen features granite tile counters along with stainless steel appliances and a mobile island. The master bedroom is oversized and easily accommodates an office space or a seating area. The front yard is maintained with a Rainbird sprinkler system which offers a 24-hour service line. The backyard is perfect for entertaining You'll find a massive deck with solar LED copper lighting opening up to an expansive backyard. The Seller's are leaving the 5 Burner Grill, fire pit, tiki torches, and patio furniture at the north end of the deck (couch, 2 chairs, and coffee table) for you so that you can have a party right away! There's so much space to enjoy a variety of activities. Lastly, the home comes with an integrated Viviant Security system including a keyless door lock, interactive doorbell, 3 cameras, and connected thermostat all accessible from the mobile app. (The system will be paid off at closing). Newer air conditioning and water heater. **ADDITIONAL INCLUSIONS** If the buyer accepts: mobile kitchen island, stainless steel microwave, toaster, and fountain in the backyard against the home. Seller's are offering a \$5,000 credit towards closing costs in lieu of new carpet.



Eve Evans
720-299-8643
Eve@TheRealEveEvans.com
<https://www.TheRealEveEvans.com/>





GROSS INTERNAL AREA
FLOOR 1: 887 sq. ft, FLOOR 2: 1006 sq. ft
EXCLUDED AREAS: , DECK: 551 sq. ft
PATIO: 99 sq. ft, PORCH: 23 sq. ft
GARAGE: 261 sq. ft
TOTAL: 1893 sq. ft
SIZES AND DIMENSIONS ARE APPROXIMATE, ACTUAL MAY VARY.

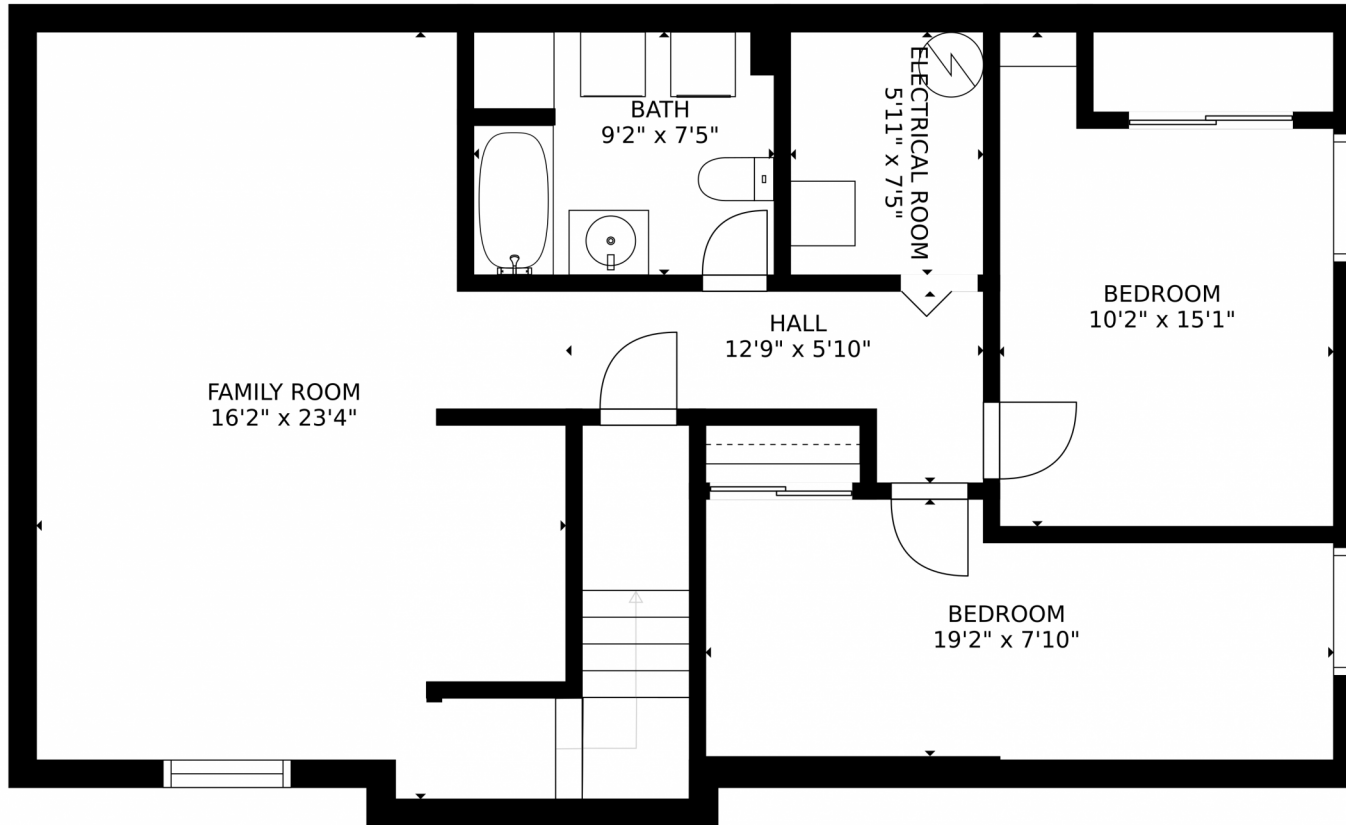
Disclaimer: Sizes and Dimensions are Approximate, Actual May Vary.



Eve Evans
720-299-8643
Eve@TheRealEveEvans.com
<https://www.TheRealEveEvans.com/>



4817 East 110th Place, Thornton, CO 80233 – Basement



GROSS INTERNAL AREA
FLOOR 1: 887 sq. ft, FLOOR 2: 1006 sq. ft
EXCLUDED AREAS: , DECK: 551 sq. ft
PATIO: 99 sq. ft, PORCH: 23 sq. ft
GARAGE: 261 sq. ft
TOTAL: 1893 sq. ft
SIZES AND DIMENSIONS ARE APPROXIMATE, ACTUAL MAY VARY.

Disclaimer: Sizes and Dimensions are Approximate, Actual May Vary.



Eve Evans
720-299-8643
Eve@TheRealEveEvans.com
<https://www.TheRealEveEvans.com/>



4817 East 110th Place, Thornton, CO 80233 – All Levels



GROSS INTERNAL AREA
FLOOR 1: 887 sq. ft, FLOOR 2: 1006 sq. ft
EXCLUDED AREAS: , DECK: 551 sq. ft
PATIO: 99 sq. ft, PORCH: 23 sq. ft
GARAGE: 261 sq. ft
TOTAL: 1893 sq. ft

SIZES AND DIMENSIONS ARE APPROXIMATE, ACTUAL MAY VARY.

Disclaimer: Sizes and Dimensions are Approximate, Actual May Vary.



Eve Evans

720-299-8643

Eve@TheRealEveEvans.com

<https://www.TheRealEveEvans.com/>



Scan code
for more
property
details

