



 Single Family
  1684 SQFT
  4 Beds
  2 Baths
  2 Car
  0.12 Acre

## PROPERTY DETAILS

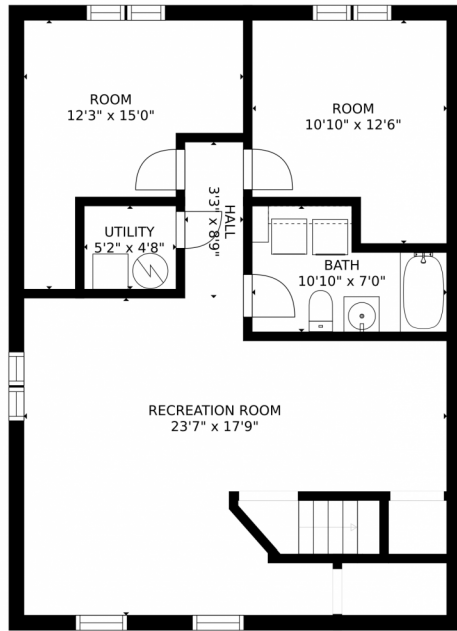
This spacious 4 bedroom, 2 bathroom house is located in a great neighborhood with no HOA. It has unobstructed views of the foothills and backs to open space with a gate in the backyard for easy access to the C470 walking/biking trail right out the back door. This trail stretches all the way from Golden to Lone Tree. The owners took pride in ownership and updated the home with new paint, flooring, trim, a front door and newer interior doors. This home has newer appliances (2016) and a newer hood vent (2019). The sewer line is 3 years old and has a life time warranty and the electrical panel is only 5 years old, which makes it move-in ready. It is located near schools, grocery stores and many restaurants and also gives access to the Deer Creek Park Pool just a few blocks away. Come home and enjoy the beautiful west sunsets right outside your master bedroom, around the fire pit in the back yard or enjoy all the many activities just minutes away. Located right next to Chatfield Lake, the dog park, Deer Creek Canyon and more.



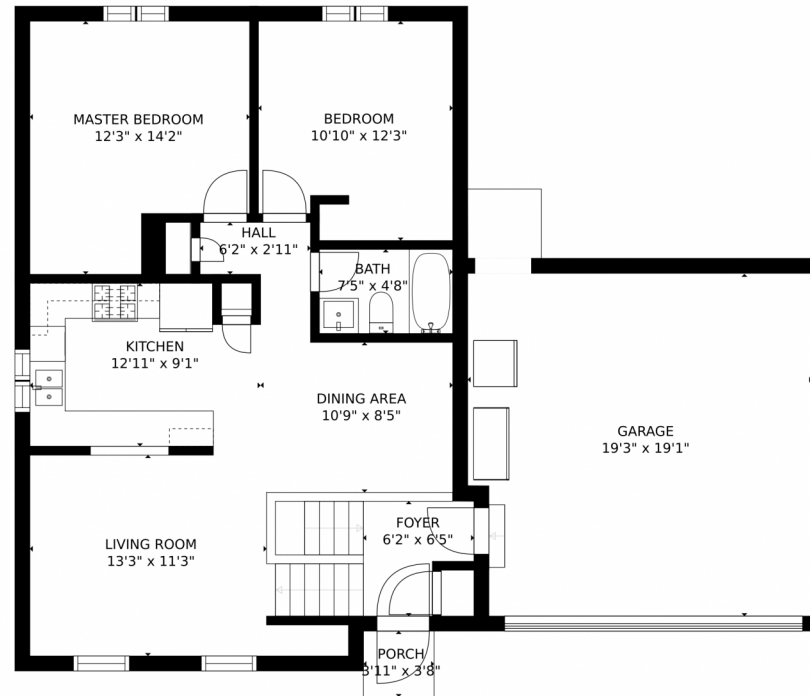
**Ally Faulkner**  
970-485-4574  
allyfaulkner6@gmail.com



# 8605 South Field Street, Littleton, CO 80128 – All Levels



FLOOR 1



FLOOR 2

GROSS INTERNAL AREA  
FLOOR 1: 785 sq. ft. FLOOR 2: 832 sq. ft.  
EXCLUDED AREAS: , PORCH: 15 sq. ft.  
GARAGE: 360 sq. ft.  
TOTAL: 1616 sq. ft.  
SIZES AND DIMENSIONS ARE APPROXIMATE, ACTUAL MAY VARY.

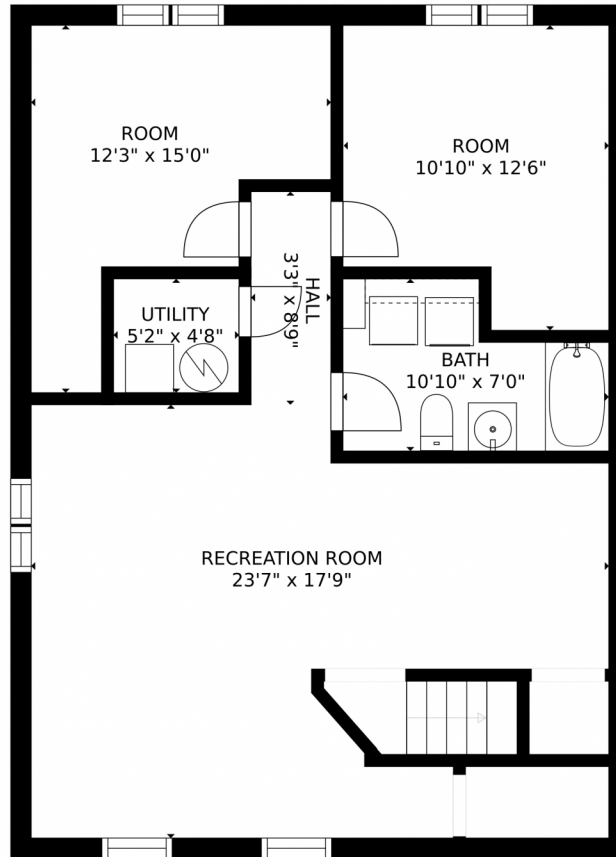
Disclaimer: Sizes and Dimensions are Approximate, Actual May Vary.



**Ally Faulkner**  
970-485-4574  
allyfaulkner6@gmail.com



8605 South Field Street, Littleton, CO 80128 – Lower Level



GROSS INTERNAL AREA  
FLOOR 1: 785 sq. ft, FLOOR 2: 832 sq. ft  
EXCLUDED AREAS: , PORCH: 15 sq. ft  
GARAGE: 360 sq. ft  
TOTAL: 1616 sq. ft  
SIZES AND DIMENSIONS ARE APPROXIMATE, ACTUAL MAY VARY.

Disclaimer: Sizes and Dimensions are Approximate, Actual May Vary.

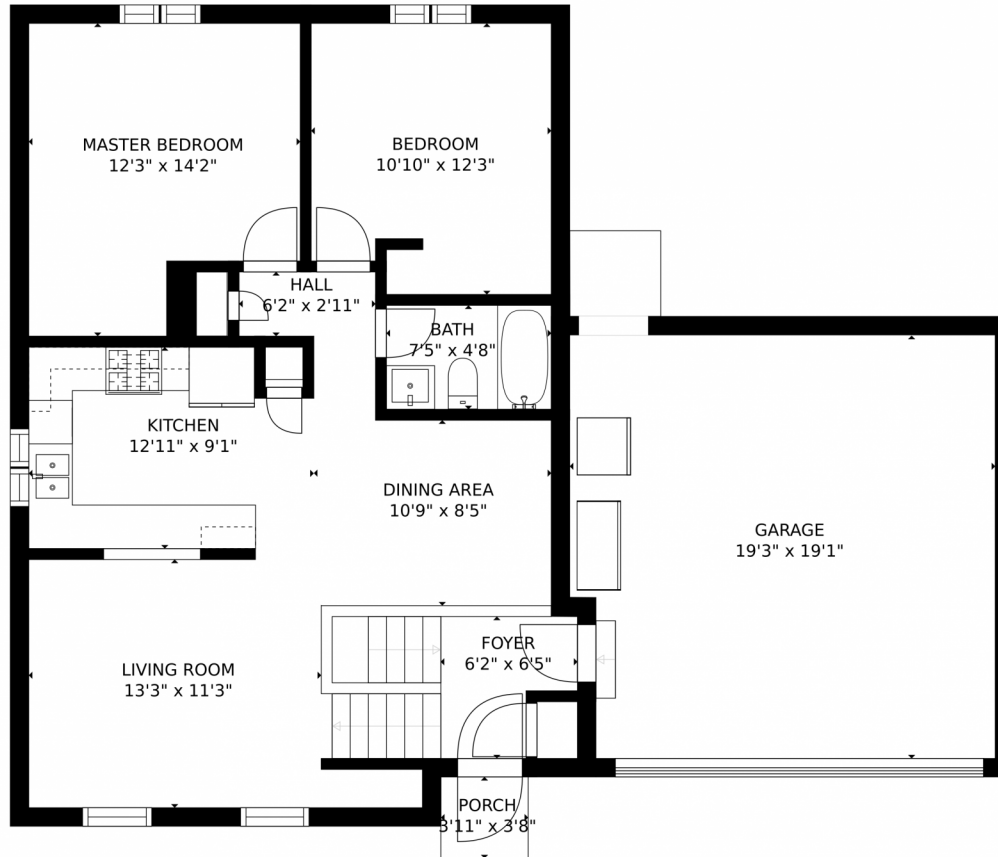


**Ally Faulkner**  
970-485-4574  
allyfaulkner6@gmail.com





# 8605 South Field Street, Littleton, CO 80128 – Main Level



GROSS INTERNAL AREA  
FLOOR 1: 785 sq. ft. FLOOR 2: 832 sq. ft.  
EXCLUDED AREAS: , PORCH: 15 sq. ft.  
GARAGE: 360 sq. ft.  
TOTAL: 1616 sq. ft.  
SIZES AND DIMENSIONS ARE APPROXIMATE, ACTUAL MAY VARY.

Disclaimer: Sizes and Dimensions are Approximate, Actual May Vary.



**Ally Faulkner**  
970-485-4574  
allyfaulkner6@gmail.com

