



677 North 48th Avenue
 Brighton, CO 80601
 COMMUNITY: Brighton East Farms

MLS # 3709704
 PRICE \$530,000



Single Family



3976 SQFT



4 Beds



2/1 Baths



2 Car



0.16 Acre

PROPERTY DETAILS

One of the largest floorplans in development that fronts to open space! This sunny home offers a living room, dining room, family room with cozy gas fireplace, spacious kitchen with maple cabinets, Corian counter tops, kitchen island for large gatherings, spectacular walk-in pantry, eating area, main floor 1/2 bath and laundry room. Upstairs offers a ample loft area, primary bedroom with private 5 piece bathroom to include double sinks and soaking tub plus a walk-in closet that you will say WOW, 3 additional bedrooms and a full bathroom. Basement is unfinished and waiting for you to make your own. Outside enjoy the private backyard with mature trees, patio, sprinkler system and graveled area for pets/play equipment. Plus no worries with a new furnace, new central air conditioning, newer hot water heater and newer garage door! Easy access to major highways, DIA, Barr Lake State Park and new shopping area.



Danielle Marcus

303-669-7974

danielle@themarkusteam.com

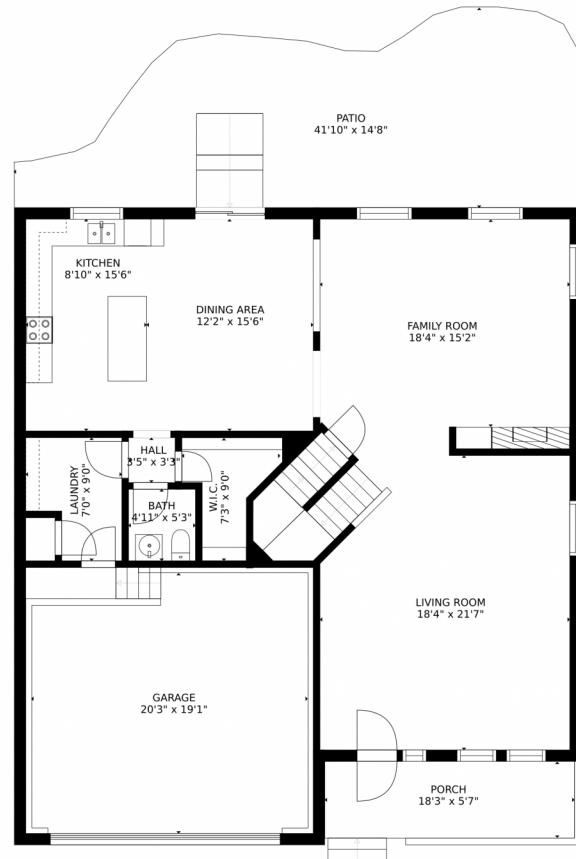
<https://www.themarkusteam.com>



Scan code
 for more
 property
 details



677 North 48th Avenue, Brighton, CO 80601 – Main Level



GROSS INTERNAL AREA
FLOOR 1: 1213 sq. ft, FLOOR 2: 1251 sq. ft
FLOOR 3: 1565 sq. ft, EXCLUDED AREAS:
PATIO: 465 sq. ft, PORCH: 103 sq. ft
GARAGE: 410 sq. ft
TOTAL: 4028 sq. ft
SIZES AND DIMENSIONS ARE APPROXIMATE, ACTUAL MAY VARY.

Disclaimer: Sizes and Dimensions are Approximate, Actual May Vary.



Danielle Marcus

303-669-7974

danielle@themarcusteam.com

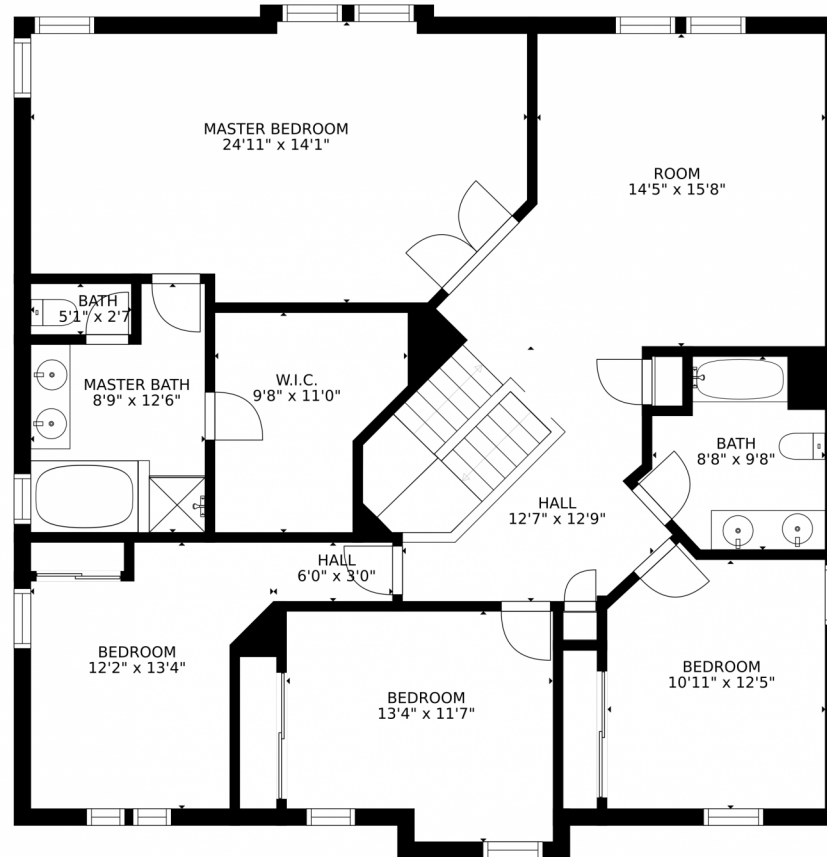
<https://www.themarcusteam.com>



Scan code
for more
property
details



677 North 48th Avenue, Brighton, CO 80601 – Upper Level



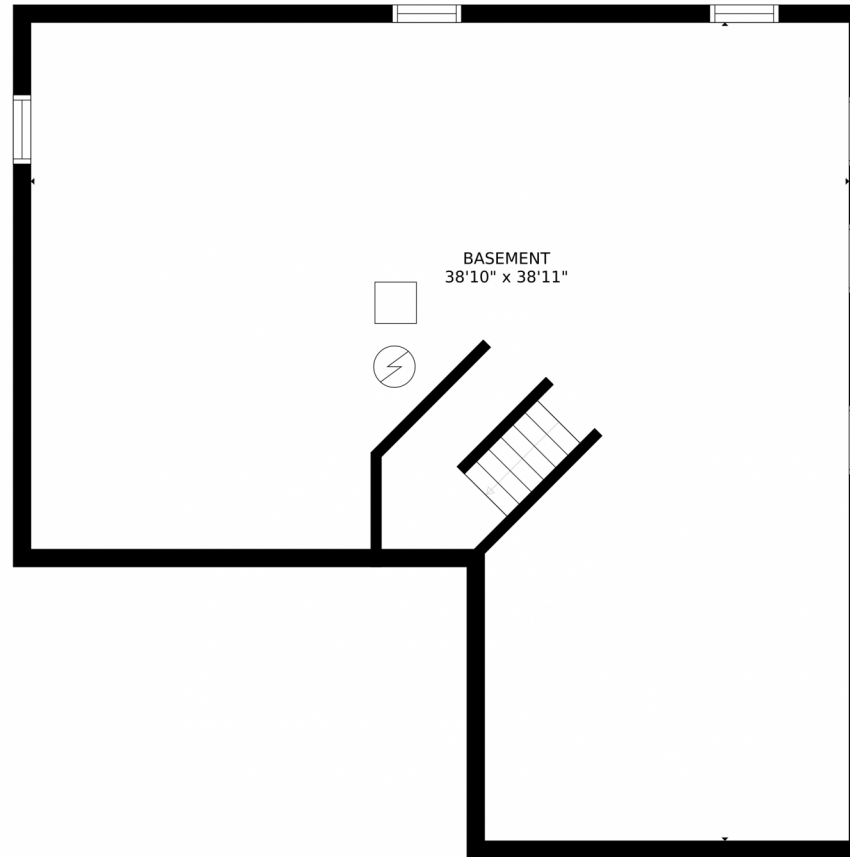
GROSS INTERNAL AREA
FLOOR 1: 1213 sq. ft. FLOOR 2: 1251 sq. ft.
FLOOR 3: 1565 sq. ft. EXCLUDED AREAS:
PATIO: 465 sq. ft. PORCH: 103 sq. ft.
GARAGE: 410 sq. ft.
TOTAL: 4028 sq. ft.
SIZES AND DIMENSIONS ARE APPROXIMATE, ACTUAL MAY VARY.

Disclaimer: Sizes and Dimensions are Approximate, Actual May Vary.



Danielle Marcus
303-669-7974
danielle@themarkusteam.com
<https://www.themarkusteam.com>





GROSS INTERNAL AREA
FLOOR 1: 1213 sq. ft, FLOOR 2: 1251 sq. ft
FLOOR 3: 1565 sq. ft, EXCLUDED AREAS:
PATIO: 465 sq. ft, PORCH: 103 sq. ft
GARAGE: 410 sq. ft
TOTAL: 4028 sq. ft
SIZES AND DIMENSIONS ARE APPROXIMATE, ACTUAL MAY VARY.

Disclaimer: Sizes and Dimensions are Approximate, Actual May Vary.



Danielle Marcus
303-669-7974
danielle@themarkusteam.com
<https://www.themarkusteam.com>



677 North 48th Avenue, Brighton, CO 80601 – All Levels



GROSS INTERNAL AREA
FLOOR 1: 1213 sq. ft. FLOOR 2: 1251 sq. ft
FLOOR 3: 1565 sq. ft. EXCLUDED AREAS:
PATIO: 465 sq. ft. PORCH: 103 sq. ft
GARAGE: 410 sq. ft
TOTAL: 4028 sq. ft
SIZES AND DIMENSIONS ARE APPROXIMATE, ACTUAL MAY VARY.

Disclaimer: Sizes and Dimensions are Approximate, Actual May Vary.



Danielle Marcus
303-669-7974
danielle@themarkusteam.com
<https://www.themarkusteam.com>



Scan code
for more
property
details