



24765 E Louisiana Circle  
Aurora, CO 80018

MLS # 8333864  
PRICE \$450,000



Single Family   1927 SQFT   4 Beds   2/1 Baths   2 Car   0.13 Acre

## PROPERTY DETAILS

Arguably the most turn-key ready home available in Murphy Creek is found in this thoughtfully planned four-bedroom beauty on Louisiana Circle! This home was perfectly designed with your every lifestyle convenience in mind from Smart GE appliances to a Nest doorbell and thermostat staying with the home to tons of storage including a 600 square foot crawl space and walk-in closets. Most of the eastward-facing windows were replaced with triple panes for heat blocking that also offer UV protection. A brilliant and luminous 2-story formal living room greets you upon arrival featuring easy to care for wood-look laminate flooring that carries you throughout the main level of the home. The back section of the main level is an entertainer's paradise with an open concept, great room style family room, dining area, and spacious kitchen flawlessly connected. Upstairs the owner's suite is your personal oasis boasting plenty of space for many furniture design options and is finished with a private en-suite bath further accessing the generously sized walk-in closet. Three additional bedrooms and a secondary full bath complete the upper level of this wonderful layout offering endless potential allowing for room to grow or a home office and so much more. Quietly nestled on a corner lot backing to open space, the yard is an absolute dream boasting mature landscaping for added privacy along with a sizable patio and garden area. You will love living in Murphy Creek in East Aurora! Home to six community parks and tot lots along with the Murphy Creek Golf Course and clubs. The spacious



**Tatyana Sturm**  
720-350-5909  
tatyana@exitrealttydc.com  
<https://thestorckteam.com>



Homestead Park is host to many community events during the year including Summer movies in the park, an Easter egg hunt, and neighborhood live music. Cool off and meet your neighbors at the community private pool complete with staffed lifeguards on duty. Just minutes away from Buckley Air Force Base along with e470 and I-70 making any commute a breeze whether you are headed Downtown or to the Tech Center.

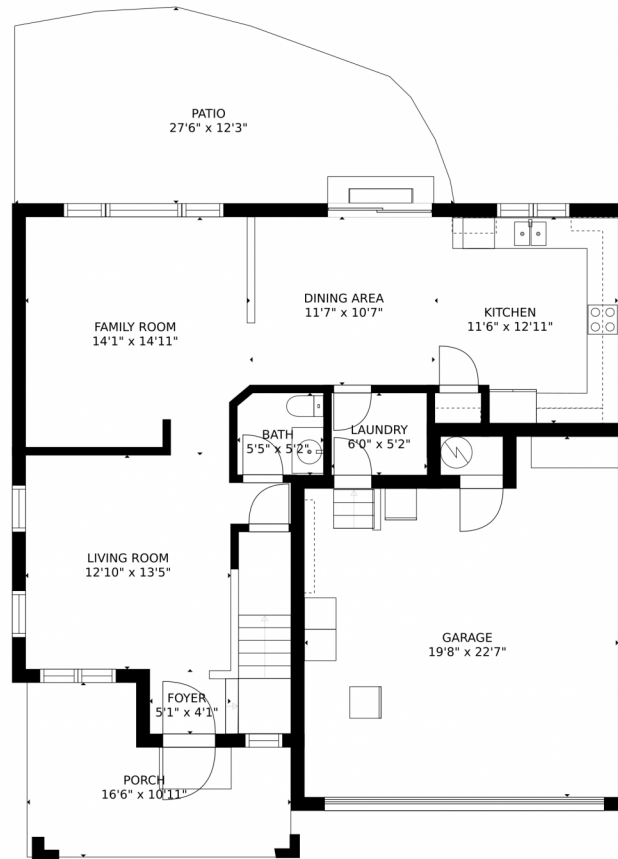


**Tatyana Sturm**  
720-350-5909  
tatyana@exitrealtydtc.com  
<https://thestorckteam.com>



Scan code  
for more  
property  
details





GROSS INTERNAL AREA  
FLOOR 1: 810 sq. ft, FLOOR 2: 1001 sq. ft  
EXCLUDED AREAS: , PATIO: 279 sq. ft  
PORCH: 142 sq. ft, GARAGE: 402 sq. ft  
TOTAL: 1811 sq. ft  
SIZES AND DIMENSIONS ARE APPROXIMATE, ACTUAL MAY VARY.

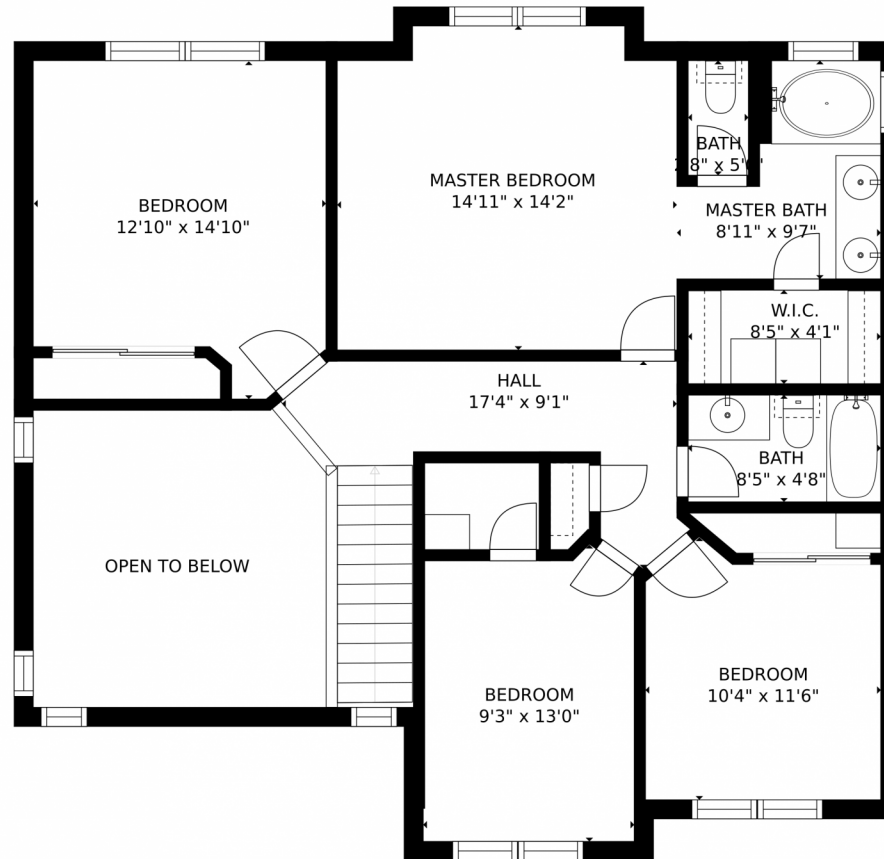
Disclaimer: Sizes and Dimensions are Approximate, Actual May Vary.



**Tatyana Sturm**  
720-350-5909  
tatyana@exitrealtydtc.com  
<https://thestorckteam.com>



24765 E Louisiana Circle, Aurora, CO 80018 – 2nd Level



GROSS INTERNAL AREA  
FLOOR 1: 810 sq. ft, FLOOR 2: 1001 sq. ft  
EXCLUDED AREAS: , PATIO: 279 sq. ft  
PORCH: 142 sq. ft, GARAGE: 402 sq. ft  
TOTAL: 1811 sq. ft  
SIZES AND DIMENSIONS ARE APPROXIMATE, ACTUAL MAY VARY.

Disclaimer: Sizes and Dimensions are Approximate, Actual May Vary.

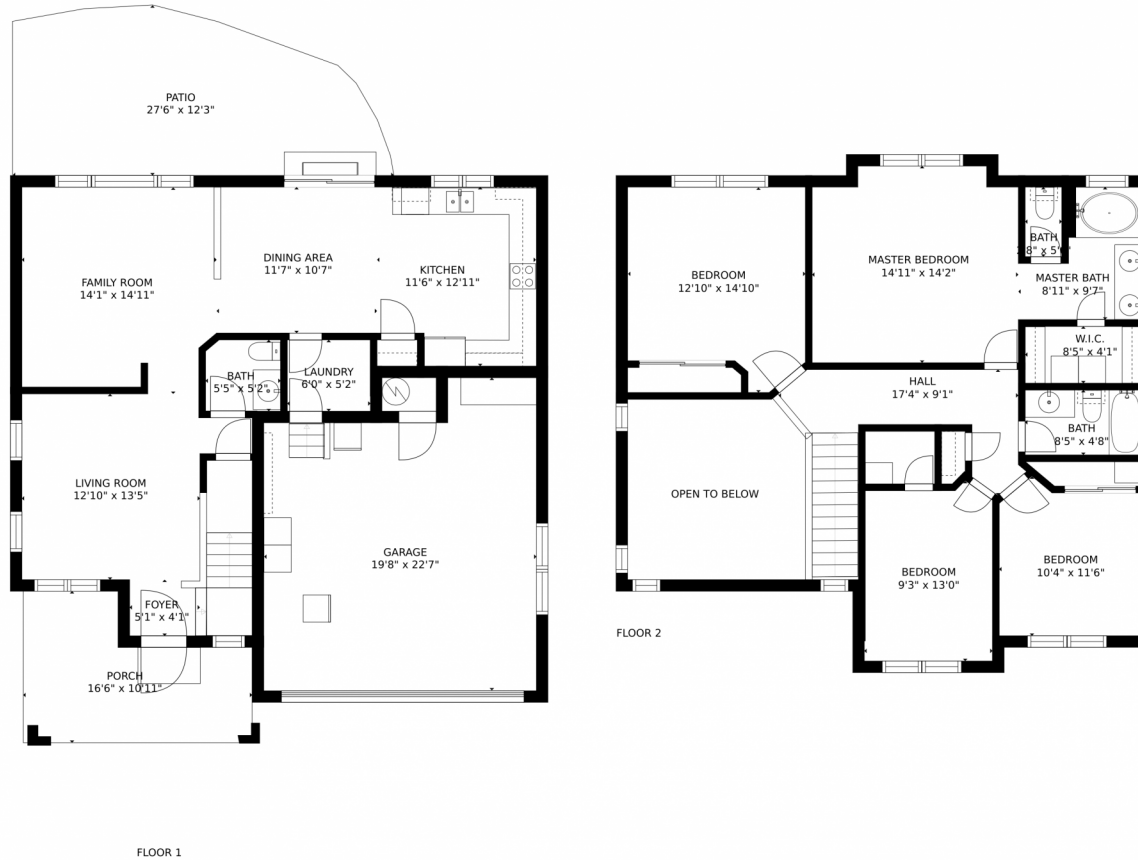


**Tatyana Sturm**  
720-350-5909  
tatyana@exitrealtydtc.com  
<https://thestorckteam.com>



Scan code  
for more  
property  
details

# 24765 E Louisiana Circle, Aurora, CO 80018 – All Levels



GROSS INTERNAL AREA  
FLOOR 1: 810 sq. ft, FLOOR 2: 1001 sq. ft  
EXCLUDED AREAS: , PATIO: 279 sq. ft  
PORCH: 142 sq. ft, GARAGE: 402 sq. ft  
TOTAL: 1811 sq. ft  
SIZES AND DIMENSIONS ARE APPROXIMATE, ACTUAL MAY VARY.

Disclaimer: Sizes and Dimensions are Approximate, Actual May Vary.



**Tatyana Sturm**  
720-350-5909  
tatyana@exitrealtydtc.com  
<https://thestorckteam.com>



Scan code  
for more  
property  
details