



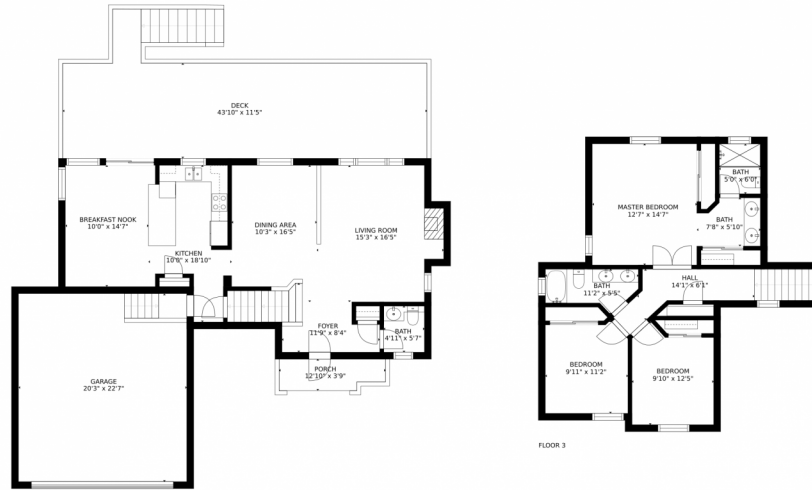
 Single Family  2724 SQFT



**Laura Rosca**  
720-951-2187  
laura@laurarosca.com

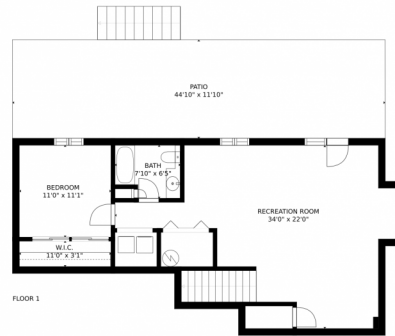


# 1509 Pinyon Drive, Castle Rock, CO 80104 – All Levels



FLOOR 2

FLOOR 3



FLOOR 1

GROSS INTERNAL AREA  
FLOOR 1: 798 sq. ft, FLOOR 2: 823 sq. ft  
FLOOR 3: 718 sq. ft, EXCLUDED AREAS:  
PATIO: 533 sq. ft, DECK: 525 sq. ft  
PORCH: 45 sq. ft, GARAGE: 459 sq. ft  
TOTAL: 2339 sq. ft  
SIZES AND DIMENSIONS ARE APPROXIMATE, ACTUAL MAY VARY.

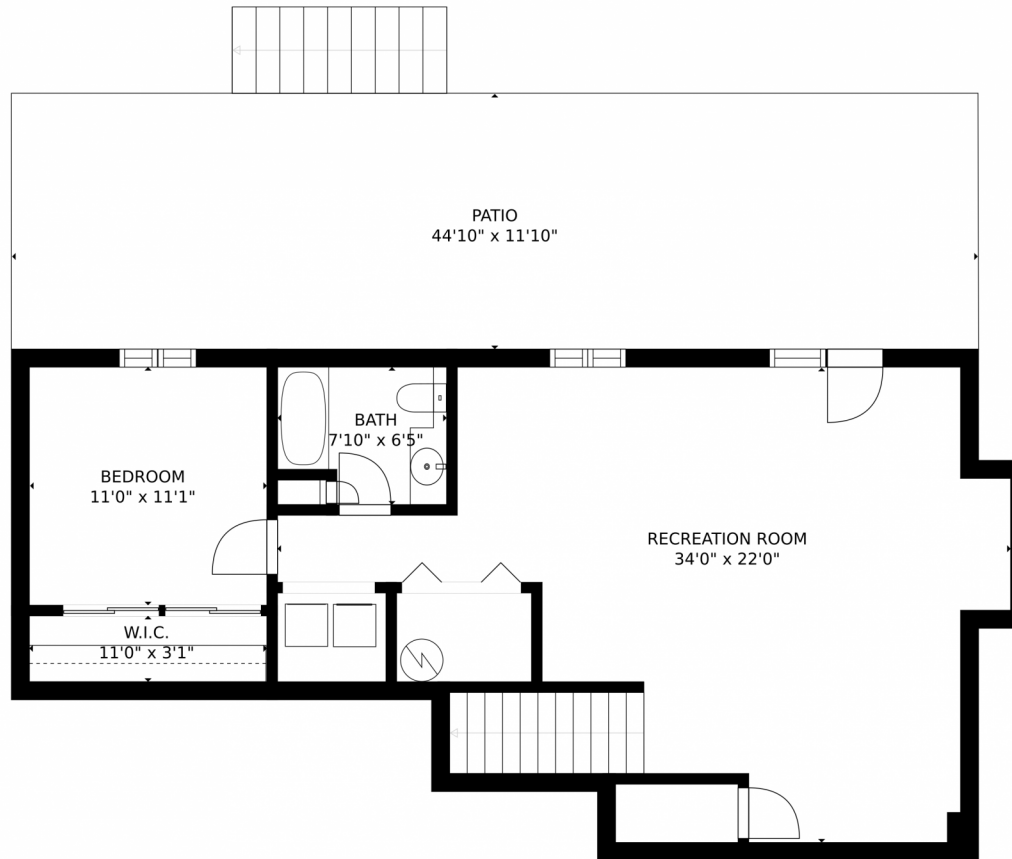
Disclaimer: Sizes and Dimensions are Approximate, Actual May Vary.



Laura Rosca  
720-951-2187  
laura@laurarosca.com



# 1509 Pinyon Drive, Castle Rock, CO 80104 – Lower Level



GROSS INTERNAL AREA  
FLOOR 1: 798 sq. ft. FLOOR 2: 823 sq. ft.  
FLOOR 3: 718 sq. ft. EXCLUDED AREAS:  
PATIO: 533 sq. ft. DECK: 525 sq. ft.  
PORCH: 45 sq. ft. GARAGE: 459 sq. ft.  
TOTAL: 2339 sq. ft.  
SIZES AND DIMENSIONS ARE APPROXIMATE, ACTUAL MAY VARY.

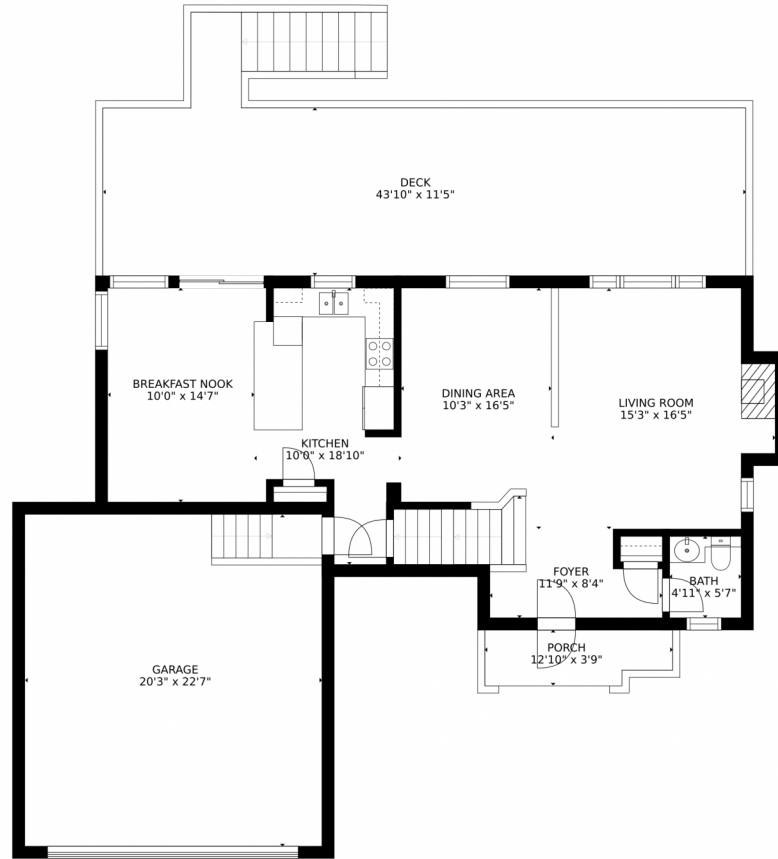
Disclaimer: Sizes and Dimensions are Approximate, Actual May Vary.



**Laura Rosca**  
720-951-2187  
laura@laurarosca.com



# 1509 Pinyon Drive, Castle Rock, CO 80104 – Main Level



GROSS INTERNAL AREA  
FLOOR 1: 798 sq. ft. FLOOR 2: 823 sq. ft.  
FLOOR 3: 718 sq. ft. EXCLUDED AREAS:  
PATIO: 533 sq. ft. DECK: 525 sq. ft.  
PORCH: 45 sq. ft. GARAGE: 459 sq. ft.  
TOTAL: 2339 sq. ft.  
SIZES AND DIMENSIONS ARE APPROXIMATE, ACTUAL MAY VARY.

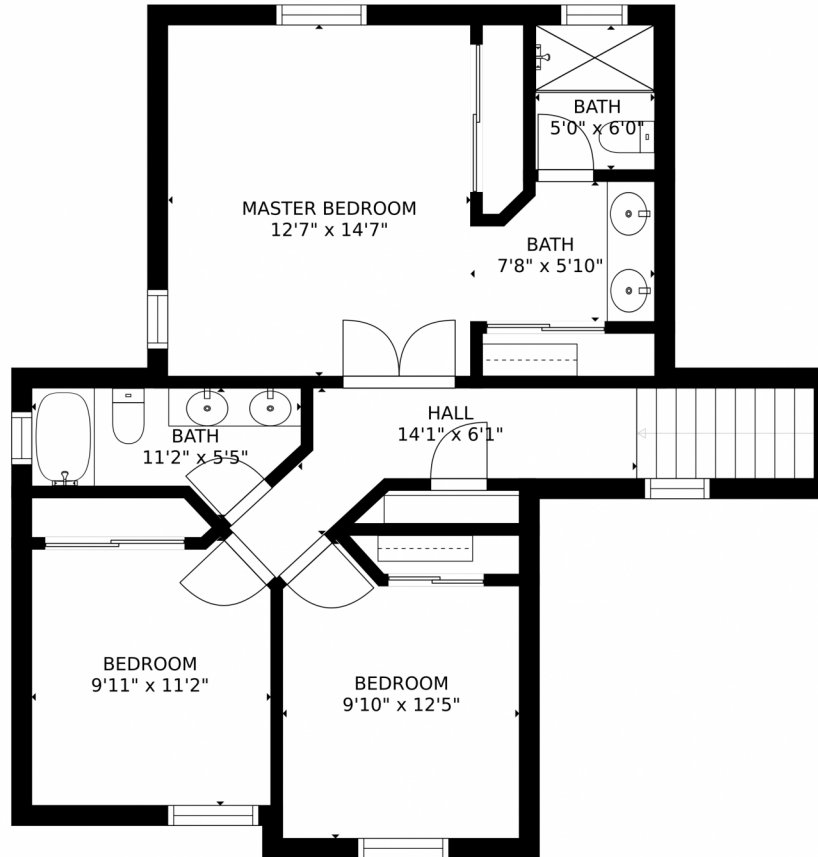
Disclaimer: Sizes and Dimensions are Approximate, Actual May Vary.



**Laura Rosca**  
720-951-2187  
laura@laurarosca.com



1509 Pinyon Drive, Castle Rock, CO 80104 – 2nd Level



GROSS INTERNAL AREA  
FLOOR 1: 798 sq. ft. FLOOR 2: 823 sq. ft.  
FLOOR 3: 718 sq. ft. EXCLUDED AREAS:  
PATIO: 533 sq. ft. DECK: 525 sq. ft.  
PORCH: 45 sq. ft. GARAGE: 459 sq. ft.  
TOTAL: 2339 sq. ft.  
SIZES AND DIMENSIONS ARE APPROXIMATE, ACTUAL MAY VARY.

Disclaimer: Sizes and Dimensions are Approximate, Actual May Vary.



**Laura Rosca**  
720-951-2187  
laura@laurarosca.com

