



 Multi Family  2149 SQFT  2 Beds  2/1 Baths  2 Car

PROPERTY DETAILS

Nestled between Marston Lake and Bowles Reservoir within walking distance of each, an amazing opportunity to own this beautiful home original owner with the most incredible location. This home is a legal duplex but feels cozy like a traditional home with 2 car attached garage, main floor master bedroom and bathroom. Living large with vaulted ceiling and spacious rooms, hardwood floors, eat in kitchen with a panty, main floor laundry, cozy dining and living rooms and gas fireplace for those cozy evenings. The 2nd floor boasts an incredible loft space with skylights with options galore - you can finish with walls, closet and door to make a 3rd bedroom or leave as is. 2nd large bedroom and full bathroom. Basement is a blank canvas awaiting your final touches with 2 egress windows, mechanicals and crawl space. This beauty will not last and is just waiting for you to make it your own! Home features custom security doors on the front and back, ceiling fans, private patio, attic fan and air conditioner.

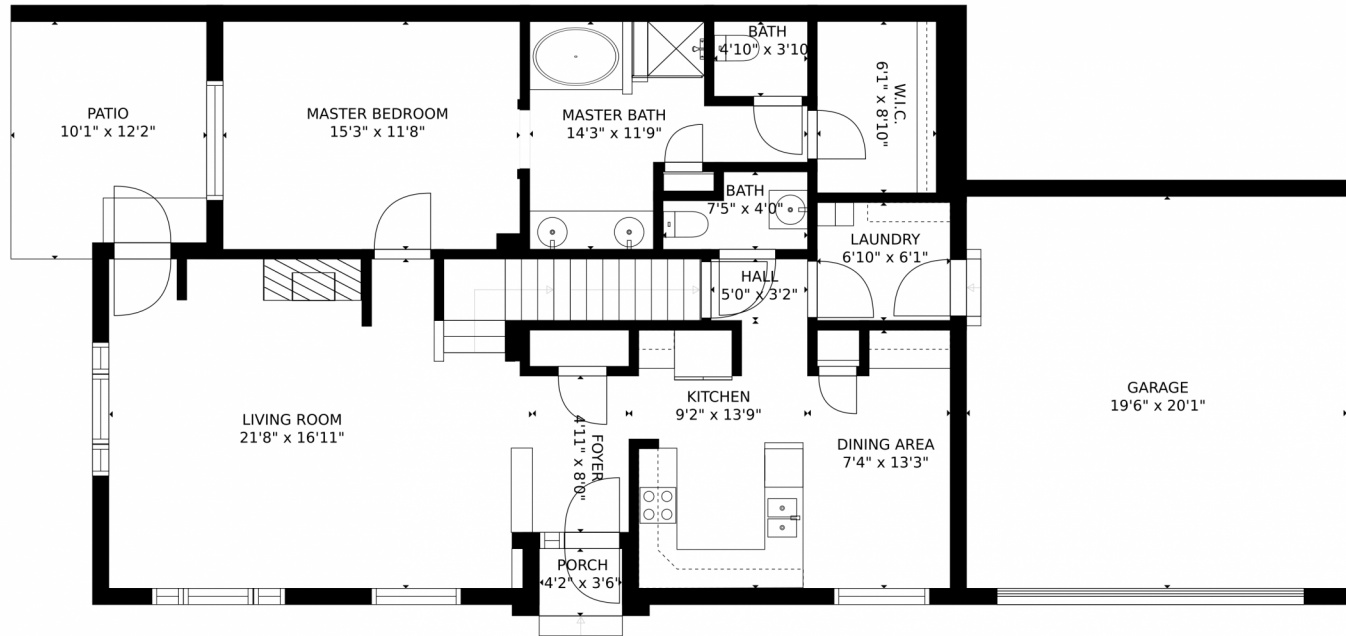
Showings begin Thursday, September 9 Seller reserves the right to accept an incredible offer at any time. In the event of multiple offers we will continue to show through Sunday, September 12 with all offers due in by 7:00 p.m. and a decision to be made by 1 p.m. on Monday, September 13.



Tonie Benetti
303-210-7336
tonie@tbkrealstate.com
<https://www.tbkrealstate.com>



7489 W Saratoga Place, Littleton, CO 80123 – Main



GROSS INTERNAL AREA
FLOOR 1: 570 sq. ft, FLOOR 2: 1168 sq. ft
FLOOR 3: 580 sq. ft, EXCLUDED AREAS:
REDUCED HEADROOM BELOW 1.5M: 314 sq. ft, PATIO: 118 sq. ft
PORCH: 15 sq. ft, GARAGE: 393 sq. ft
TOTAL: 2318 sq. ft
SIZES AND DIMENSIONS ARE APPROXIMATE, ACTUAL MAY VARY.

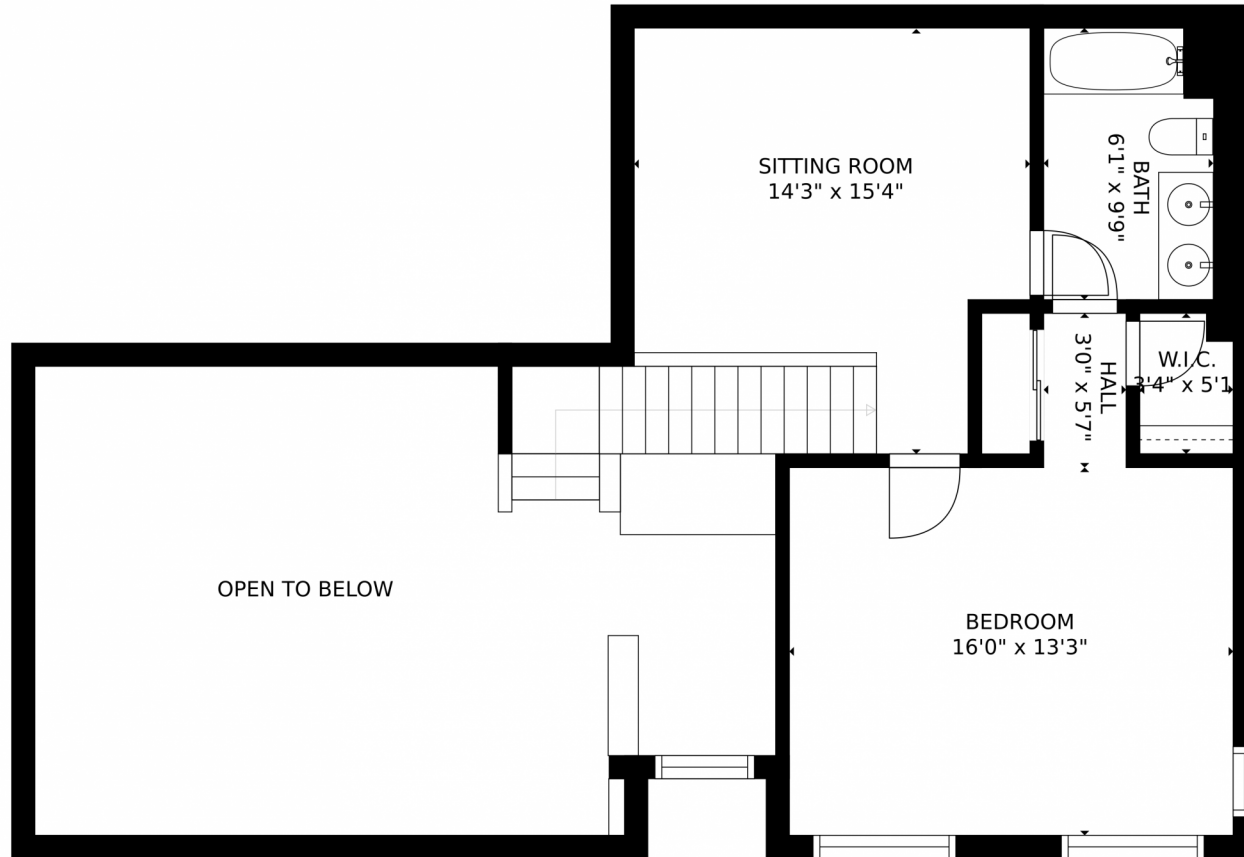
Disclaimer: Sizes and Dimensions are Approximate, Actual May Vary.



Tonie Benetti
303-210-7336
tonie@tbkrealstate.com
<https://www.tbkrealstate.com>



Scan code
for more
property
details



GROSS INTERNAL AREA
FLOOR 1: 570 sq. ft, FLOOR 2: 1168 sq. ft
FLOOR 3: 580 sq. ft, EXCLUDED AREAS:
REDUCED HEADROOM BELOW 1.5M: 314 sq. ft, PATIO: 118 sq. ft
PORCH: 15 sq. ft, GARAGE: 393 sq. ft
TOTAL: 2318 sq. ft
SIZES AND DIMENSIONS ARE APPROXIMATE, ACTUAL MAY VARY.

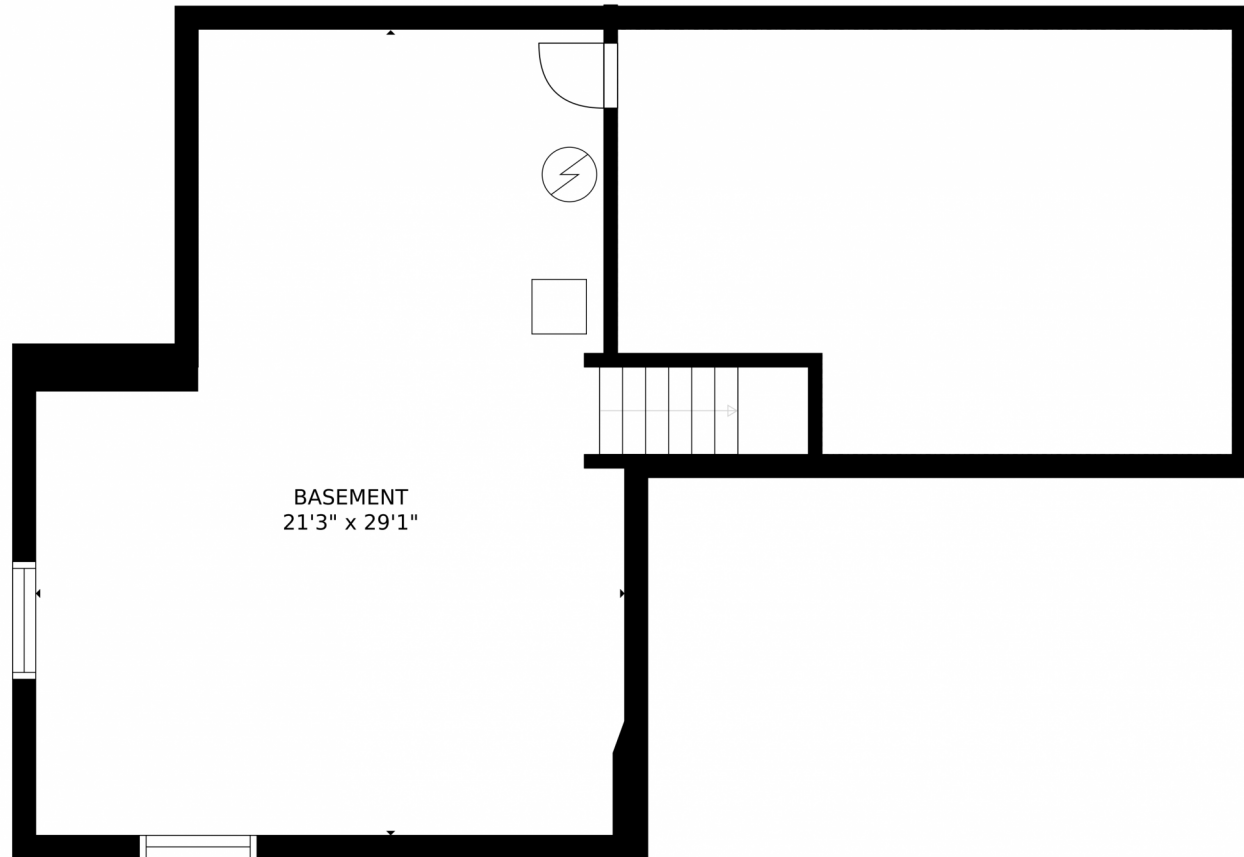
Disclaimer: Sizes and Dimensions are Approximate, Actual May Vary.



Tonie Benetti
303-210-7336
tonie@tbkrealstate.com
<https://www.tbkrealstate.com>



Scan code
for more
property
details



GROSS INTERNAL AREA
FLOOR 1: 570 sq. ft, FLOOR 2: 1168 sq. ft
FLOOR 3: 580 sq. ft, EXCLUDED AREAS:
REDUCED HEADROOM BELOW 1.5M: 314 sq. ft, PATIO: 118 sq. ft
PORCH: 15 sq. ft, GARAGE: 393 sq. ft
TOTAL: 2318 sq. ft
SIZES AND DIMENSIONS ARE APPROXIMATE, ACTUAL MAY VARY.

Disclaimer: Sizes and Dimensions are Approximate, Actual May Vary.



Tonie Benetti
303-210-7336
tonie@tbkrealstate.com
<https://www.tbkrealstate.com>



7489 W Saratoga Place, Littleton, CO 80123 – All Levels



GROSS INTERNAL AREA
FLOOR 1: 570 sq. ft, FLOOR 2: 1168 sq. ft
FLOOR 3: 580 sq. ft, EXCLUDED AREAS:
REDUCED HEADROOM BELOW 1.5M: 314 sq. ft, PATIO: 118 sq. ft
PORCH: 15 sq. ft, GARAGE: 393 sq. ft
TOTAL: 2318 sq. ft
SIZES AND DIMENSIONS ARE APPROXIMATE, ACTUAL MAY VARY.

Disclaimer: Sizes and Dimensions are Approximate, Actual May Vary.



Tonie Benetti
303-210-7336
tonie@tbkrealstate.com
<https://www.tbkrealstate.com>



Scan code
for more
property
details