



 Single Family  2126 SQFT  3 Beds  3 Baths  2 Car

PROPERTY DETAILS

Sweeping Mountain Valley Views

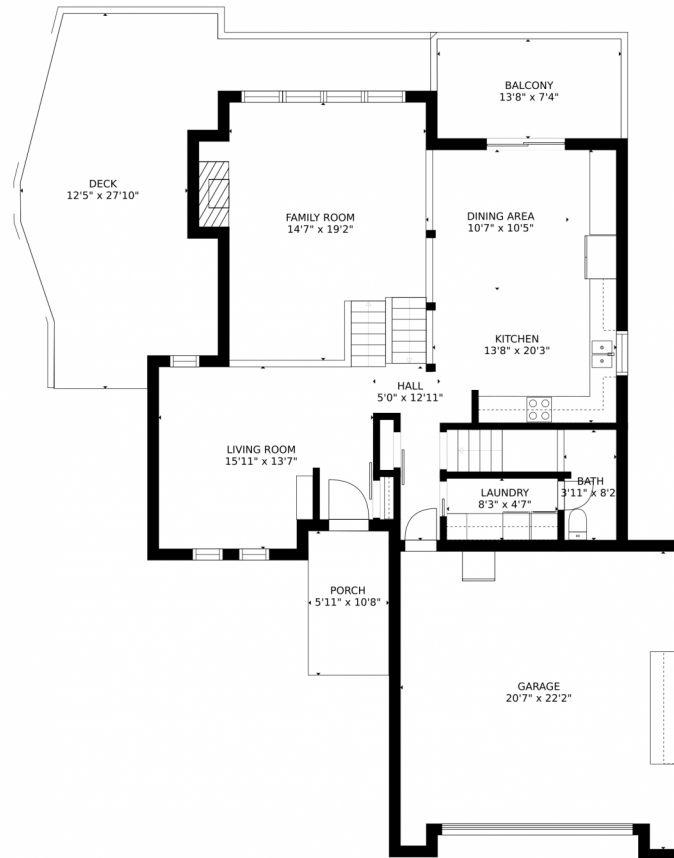


Peg Schroeder
303-885-4404
peg@tuppersteam.com



Scan code
for more
property
details





GROSS INTERNAL AREA
FLOOR 1: 422 sq. ft, FLOOR 2: 962 sq. ft
FLOOR 3: 844 sq. ft, EXCLUDED AREAS:
BALCONY: 101 sq. ft, DECK: 397 sq. ft
PORCH: 64 sq. ft, GARAGE: 423 sq. ft
TOTAL: 2228 sq. ft
SIZES AND DIMENSIONS ARE APPROXIMATE, ACTUAL MAY VARY.

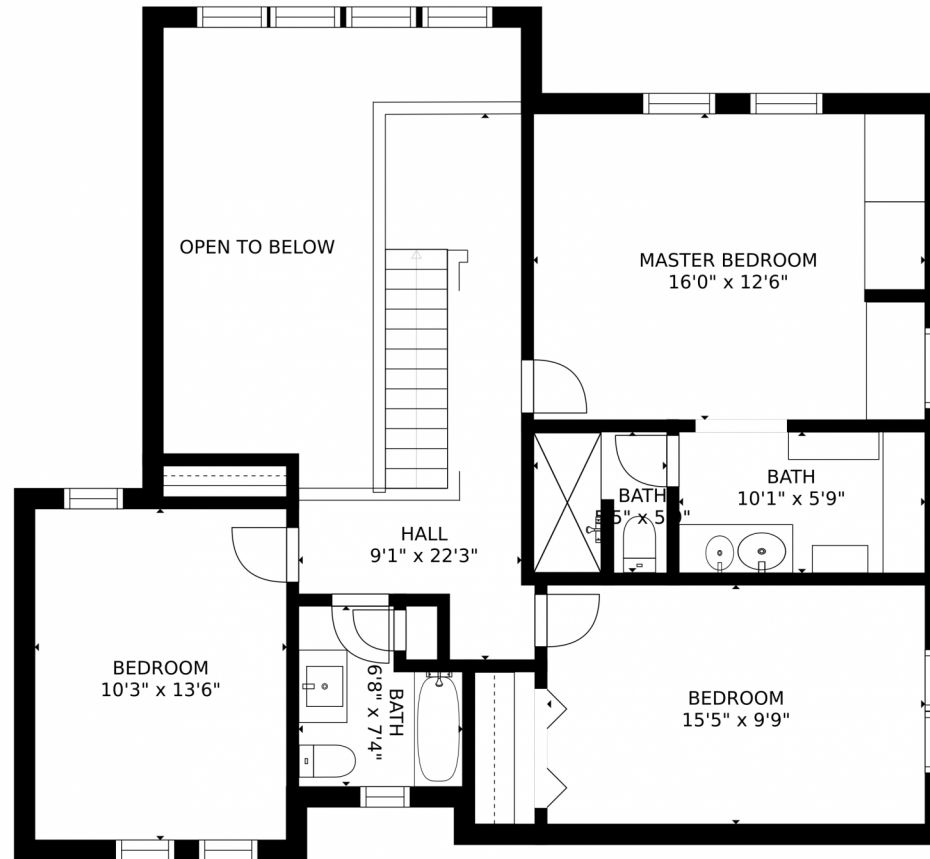
Disclaimer: Sizes and Dimensions are Approximate, Actual May Vary.



Peg Schroeder
303-885-4404
peg@tuppersteam.com



31228 Kings Valley West, Conifer, CO 80433 – 2nd Level



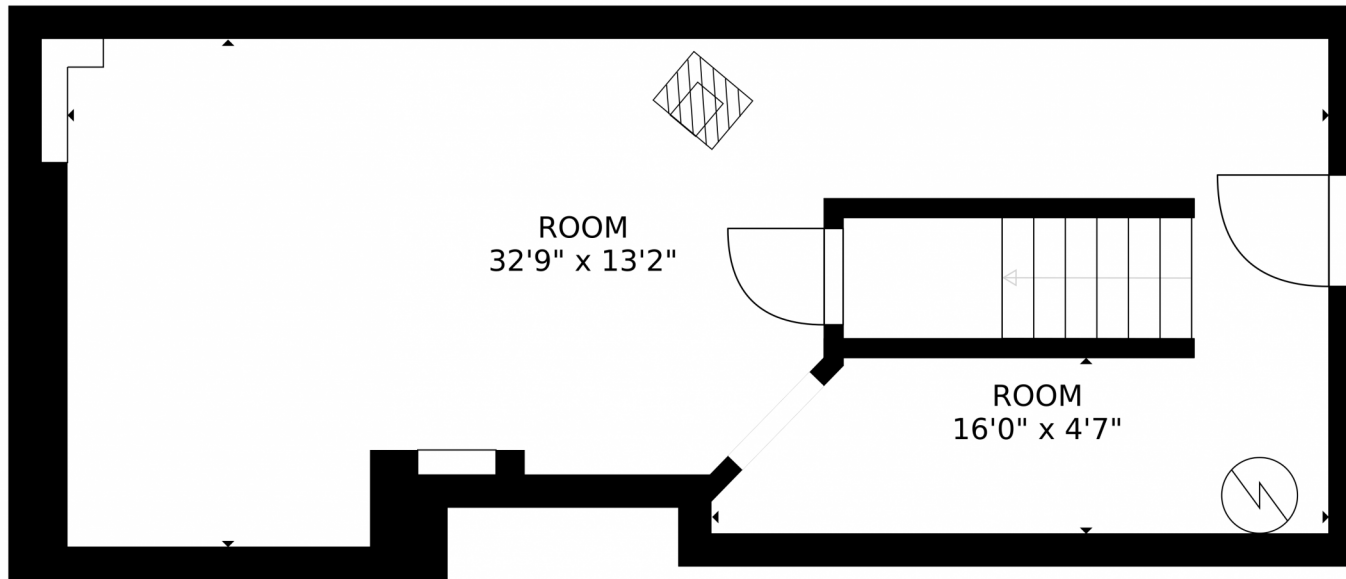
GROSS INTERNAL AREA
FLOOR 1: 422 sq. ft, FLOOR 2: 962 sq. ft
FLOOR 3: 844 sq. ft, EXCLUDED AREAS:
BALCONY: 101 sq. ft, DECK: 397 sq. ft
PORCH: 64 sq. ft, GARAGE: 423 sq. ft
TOTAL: 2228 sq. ft
SIZES AND DIMENSIONS ARE APPROXIMATE, ACTUAL MAY VARY.

Disclaimer: Sizes and Dimensions are Approximate, Actual May Vary.



Peg Schroeder
303-885-4404
peg@tuppersteam.com





GROSS INTERNAL AREA
FLOOR 1: 422 sq. ft, FLOOR 2: 962 sq. ft
FLOOR 3: 844 sq. ft, EXCLUDED AREAS:
BALCONY: 101 sq. ft, DECK: 397 sq. ft
PORCH: 64 sq. ft, GARAGE: 423 sq. ft
TOTAL: 2228 sq. ft
SIZES AND DIMENSIONS ARE APPROXIMATE, ACTUAL MAY VARY.

Disclaimer: Sizes and Dimensions are Approximate, Actual May Vary.



Peg Schroeder
303-885-4404
peg@tuppersteam.com



31228 Kings Valley West, Conifer, CO 80433 – All Levels



GROSS INTERNAL AREA
FLOOR 1: 422 sq. ft, FLOOR 2: 962 sq. ft
FLOOR 3: 844 sq. ft, EXCLUDED AREAS:
BALCONY: 101 sq. ft, DECK: 397 sq. ft
PORCH: 64 sq. ft, GARAGE: 423 sq. ft
TOTAL: 2228 sq. ft
SIZES AND DIMENSIONS ARE APPROXIMATE, ACTUAL MAY VARY.

Disclaimer: Sizes and Dimensions are Approximate, Actual May Vary.



Peg Schroeder
303-885-4404
peg@tuppersteam.com



Scan code
for more
property
details