



4662 South Quitman Street
 Denver, CO 80236
 COMMUNITY: Bow Mar Heights

MLS # 9409582
 PRICE \$690,000



Single Family 3554 SQFT 4 Beds 3 Baths 2 Car 0.18 Acre

PROPERTY DETAILS

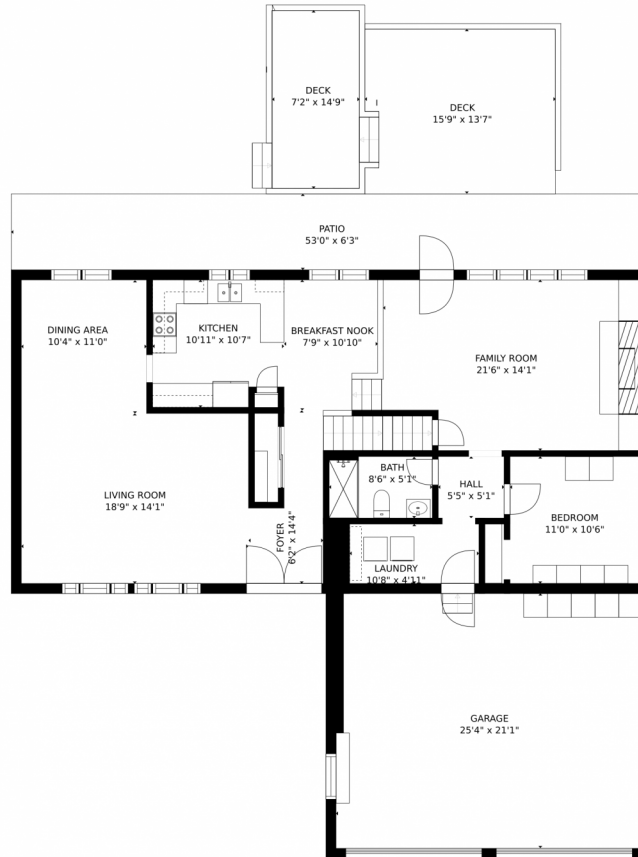
This sunny and well maintained home offers vaulted ceilings, hardwood floors, plantation shutters throughout, spacious front room with newer ceiling fan and opens to the dining room, perfect for entertaining. The kitchen space offers newer stainless steel appliances, pantry and breakfast nook overlooking the family room with gas fireplace. The lower level also includes bedroom with Murphy bed, 3/4 bathroom and laundry area with washer and dryer (gas option available). Upstairs, offer primary bedroom with 2 closets, private bathroom with double sinks and walk-in shower, 2 additional bedrooms with hardwood floors, and full bathroom. Basement in finished with a spacious rec. room and a flex 5th bedroom with cabinet storage. Outside enjoy patio and deck with retractable awning plus mature landscape and sprinkler system-ideal for summer BBQ's and relaxing! Additional features include new roof, newer major systems, and evaporative cooler. This home is located only 5 minutes to HWY 285, Bear Creek trail, shopping and restaurants.



Danielle Marcus
 303-669-7974
 danielle@themarkusteam.com
<https://www.themarkusteam.com>



4662 South Quitman Street, Denver, CO 80236 – 1st Floor



GROSS INTERNAL AREA
FLOOR 1: 716 sq. ft. FLOOR 2: 1290 sq. ft.
FLOOR 3: 696 sq. ft. EXCLUDED AREAS:
DECK: 322 sq. ft. PATIO: 333 sq. ft.
GARAGE: 535 sq. ft.
TOTAL: 2702 sq. ft.
SIZES AND DIMENSIONS ARE APPROXIMATE, ACTUAL MAY VARY.

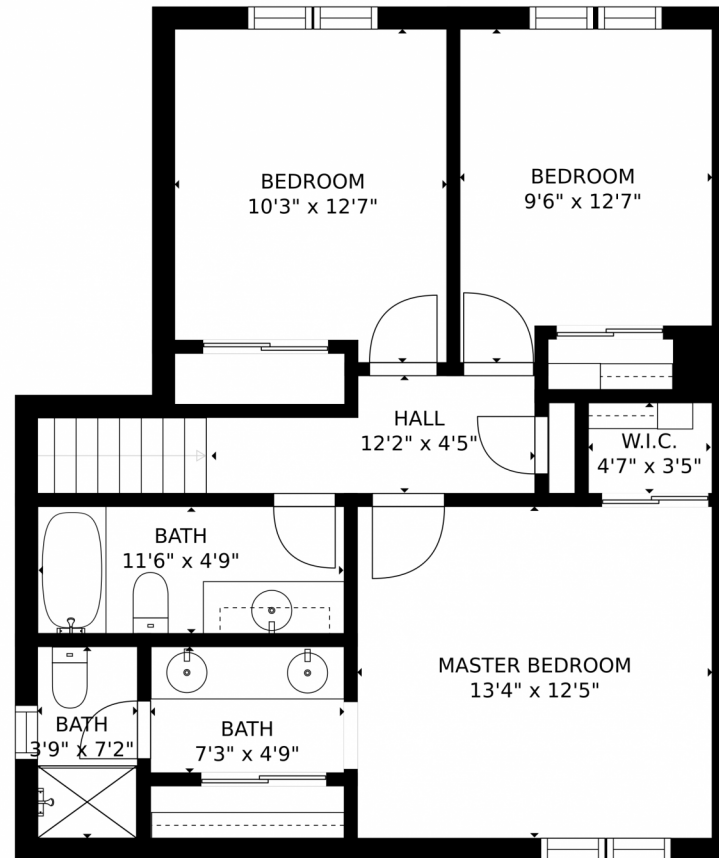
Disclaimer: Sizes and Dimensions are Approximate, Actual May Vary.



Danielle Marcus
303-669-7974
danielle@themarkusteam.com
<https://www.themarkusteam.com>



4662 South Quitman Street, Denver, CO 80236 – 2nd Floor



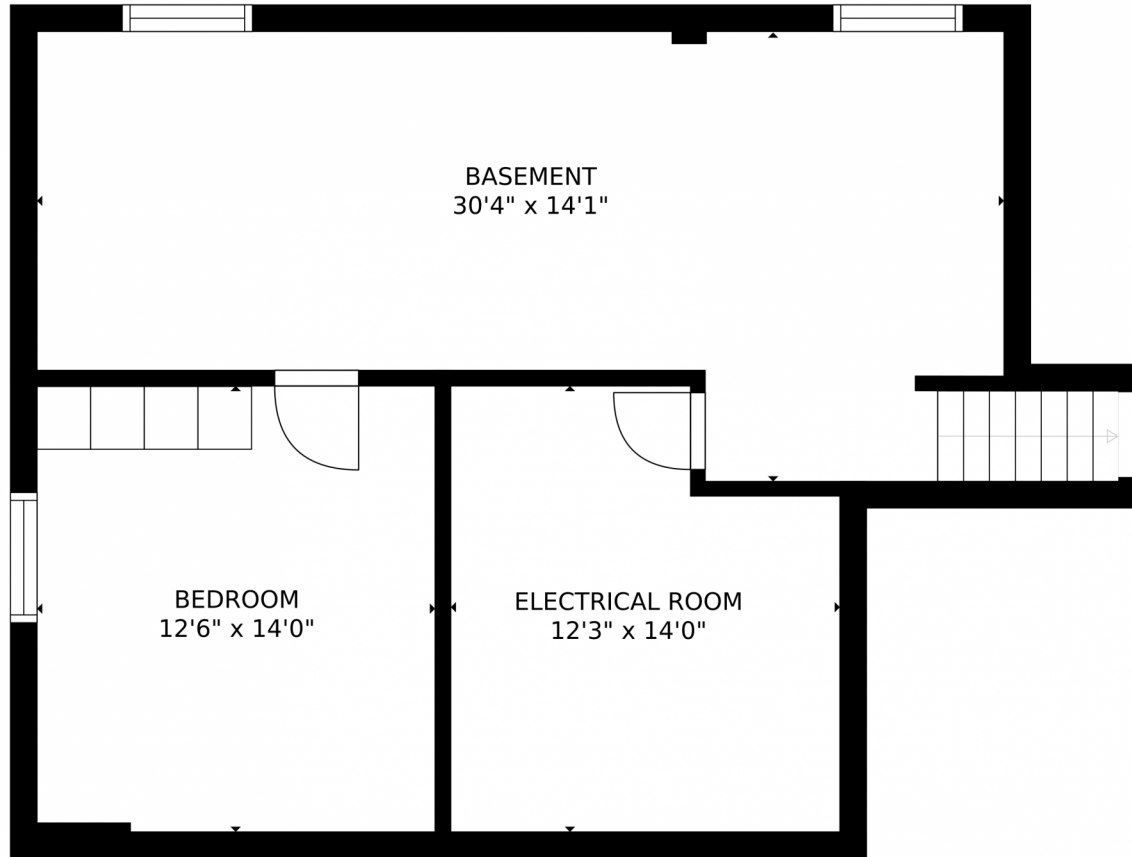
GROSS INTERNAL AREA
FLOOR 1: 716 sq. ft. FLOOR 2: 1290 sq. ft.
FLOOR 3: 696 sq. ft. EXCLUDED AREAS:
DECK: 322 sq. ft. PATIO: 333 sq. ft.
GARAGE: 535 sq. ft.
TOTAL: 2702 sq. ft.
SIZES AND DIMENSIONS ARE APPROXIMATE, ACTUAL MAY VARY.

Disclaimer: Sizes and Dimensions are Approximate, Actual May Vary.



Danielle Marcus
303-669-7974
danielle@themarkusteam.com
<https://www.themarkusteam.com>





GROSS INTERNAL AREA
FLOOR 1: 716 sq. ft, FLOOR 2: 1290 sq. ft
FLOOR 3: 696 sq. ft, EXCLUDED AREAS:
DECK: 322 sq. ft, PATIO: 333 sq. ft
GARAGE: 535 sq. ft
TOTAL: 2702 sq. ft
SIZES AND DIMENSIONS ARE APPROXIMATE, ACTUAL MAY VARY.

Disclaimer: Sizes and Dimensions are Approximate, Actual May Vary.



Danielle Marcus
303-669-7974
danielle@themarkusteam.com
<https://www.themarkusteam.com>



4662 South Quitman Street, Denver, CO 80236 – All Floors



GROSS INTERNAL AREA
FLOOR 1: 716 sq. ft, FLOOR 2: 1290 sq. ft
FLOOR 3: 696 sq. ft, EXCLUDED AREAS:
DECK: 322 sq. ft, PATIO: 333 sq. ft
GARAGE: 535 sq. ft
TOTAL: 2702 sq. ft
SIZES AND DIMENSIONS ARE APPROXIMATE, ACTUAL MAY VARY.

Disclaimer: Sizes and Dimensions are Approximate, Actual May Vary.



Danielle Marcus
303-669-7974
danielle@themarkusteam.com
<https://www.themarkusteam.com>

