

Single Family



2400 SQFT



1 Bed



1 Baths



2 Car



**Taylor Haas**

303-665-7368

taylorh@coloradorpm.com

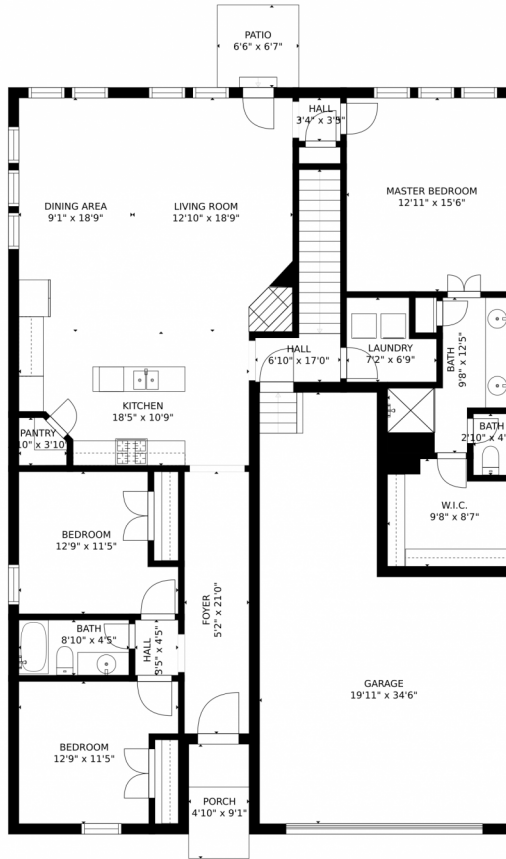
<https://www.coloradorpm.com/available-rental-properties-denver>



Scan code  
for more  
property  
details



# 2114 Autumn Moon Drive, Windsor, CO 80550 – Main Level



GROSS INTERNAL AREA  
FLOOR 1: 1585 sq. ft, FLOOR 2: 1645 sq. ft  
EXCLUDED AREAS: , PATIO: 43 sq. ft  
PORCH: 44 sq. ft, GARAGE: 533 sq. ft  
TOTAL: 3230 sq. ft  
SIZES AND DIMENSIONS ARE APPROXIMATE, ACTUAL MAY VARY.

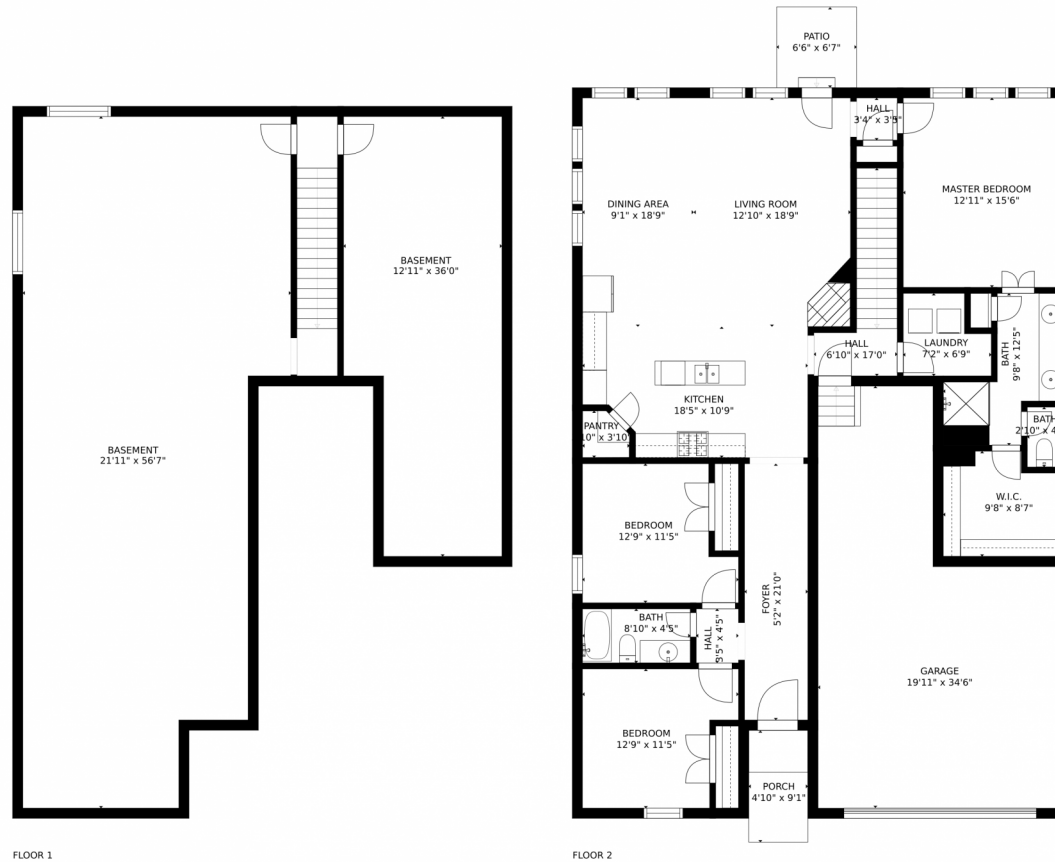
Disclaimer: Sizes and Dimensions are Approximate, Actual May Vary.



**Taylor Haas**  
303-665-7368  
taylorh@coloradorpm.com  
<https://www.coloradorpm.com/available-rental-properties-denver>



# 2114 Autumn Moon Drive, Windsor, CO 80550 – Lower Level



GROSS INTERNAL AREA  
FLOOR 1: 1585 sq. ft, FLOOR 2: 1645 sq. ft  
EXCLUDED AREAS: , PATIO: 43 sq. ft  
PORCH: 44 sq. ft, GARAGE: 533 sq. ft  
TOTAL: 3230 sq. ft  
SIZES AND DIMENSIONS ARE APPROXIMATE, ACTUAL MAY VARY.

Disclaimer: Sizes and Dimensions are Approximate, Actual May Vary.



**Taylor Haas**  
303-665-7368  
taylorh@coloradorpm.com  
<https://www.coloradorpm.com/available-rental-properties-denver>

