



25458 Red Cloud Drive
Conifer, CO 80433

MLS # 9083216
PRICE \$1,200,000



Single Family



4382 SQFT



3 Beds



2 Baths



3 Car



2.7 Acre

PROPERTY DETAILS

This stunning mountain home is the family oasis you've been waiting for! Private with a secluded feel, yet just minutes to Conifer town center, parks, schools, shopping and dining plus a quick commute to Denver. Retreat from your busy day in the huge master with two sided fireplace and melt away your cares in the luxurious soaking tub followed by a steam shower. Whether entertaining or hosting the family holidays, you'll love the open and bright kitchen with both island seating and large dining space. The adjacent covered deck features a built in gas grill and hot tub! The 2 bedrooms above share a center bath and are ideal for kids or guests. The loft area is perfect for homework or remote working. The large pantry has plenty of storage capacity as does the huge laundry room with an abundance of cabinets. The family room is ideally suited for a home theater and gaming area. The workshop area has plenty of space for projects large and small and there are both 1 and 2 car attached garages, both heated via the central boiler by separate thermostats. The addition is fully permitted and the required fire mitigation completed as well.

The yard is level and usable and all together, this is an amazing package that you'll love to call home for many years. Don't wait, call Tom today for a private showing!



Tom Roy

303-829-2735

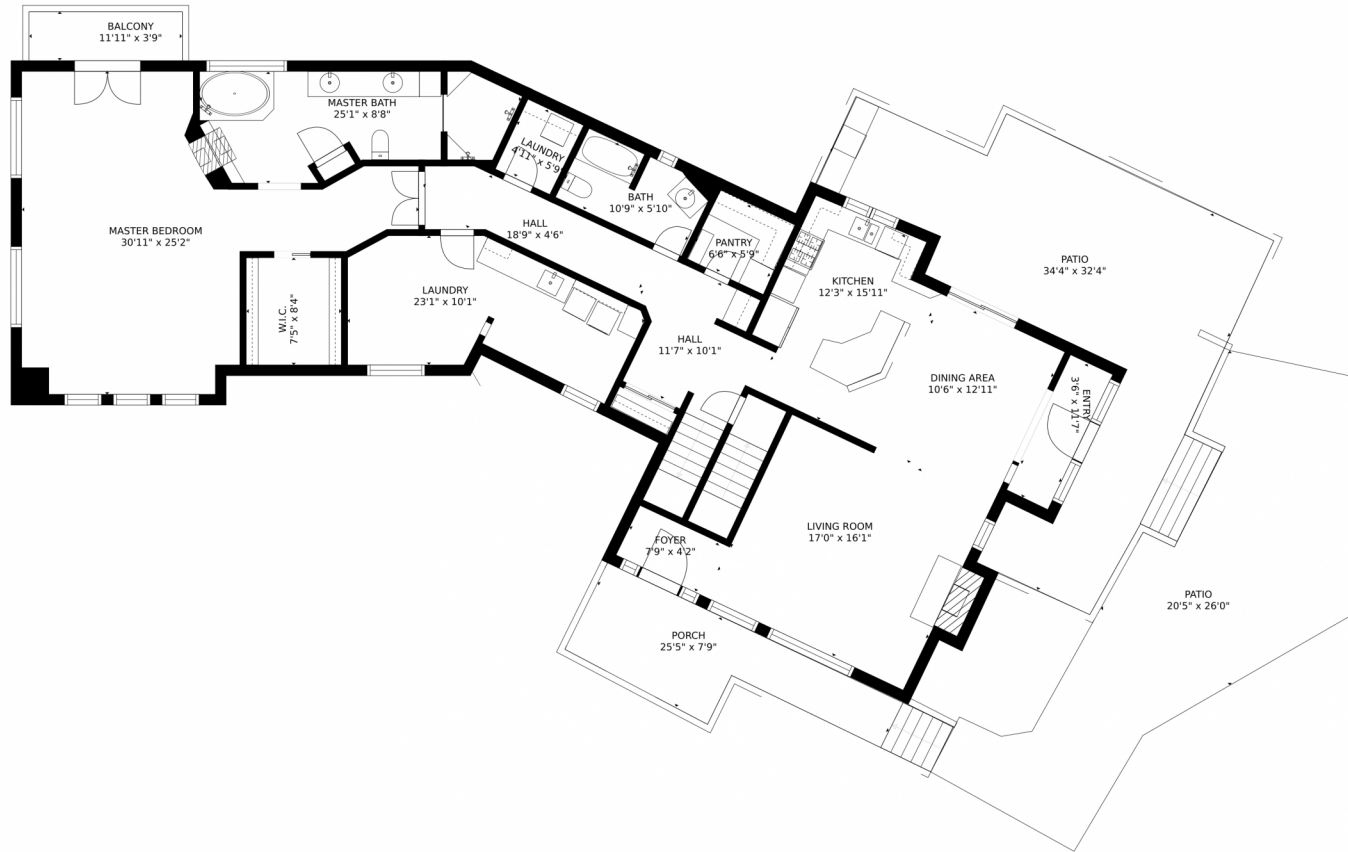
tom@tomroy.com

<https://www.therealtywerks.com/>

Scan code
for more
property
details



25458 Red Cloud Drive, Conifer, CO 80433 – Main



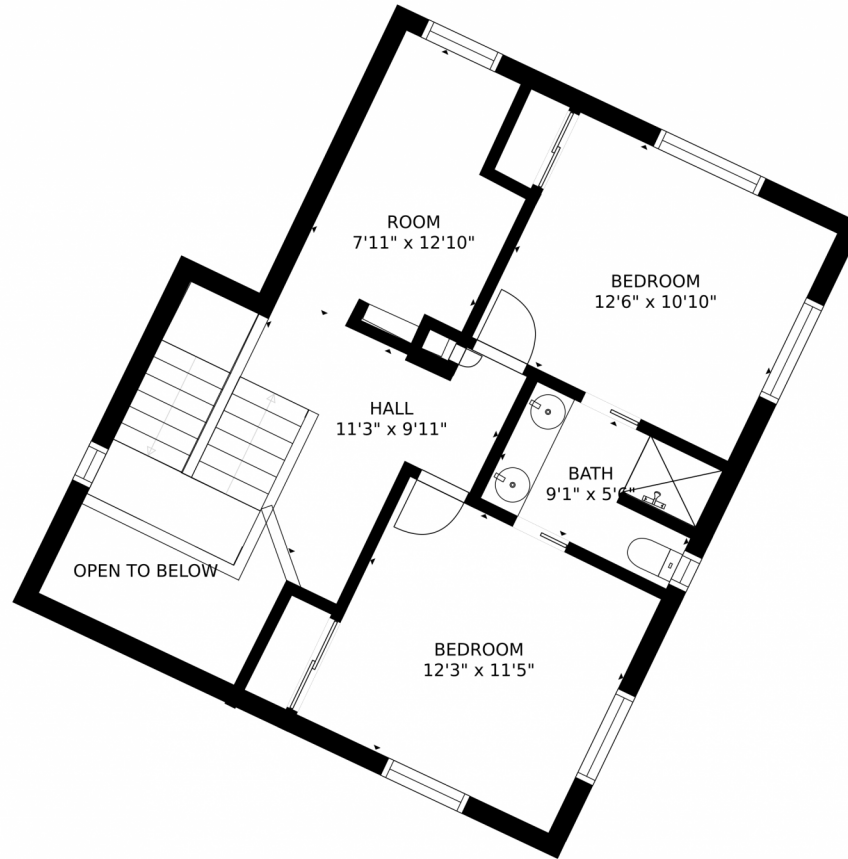
GROSS INTERNAL AREA
FLOOR 1: 1035 sq. ft. FLOOR 2: 2056 sq. ft
FLOOR 3: 549 sq. ft. EXCLUDED AREAS:
PATIO: 2203 sq. ft. GARAGE: 875 sq. ft
BALCONY: 46 sq. ft. PORCH: 164 sq. ft
TOTAL: 3640 sq. ft
SIZES AND DIMENSIONS ARE APPROXIMATE, ACTUAL MAY VARY.

Disclaimer: Sizes and Dimensions are Approximate, Actual May Vary.



Tom Roy
303-829-2735
tom@tomroy.com
<https://www.therealtywerks.com/>





GROSS INTERNAL AREA
FLOOR 1: 1035 sq. ft. FLOOR 2: 2056 sq. ft.
FLOOR 3: 549 sq. ft. EXCLUDED AREAS:
PATIO: 2203 sq. ft. GARAGE: 875 sq. ft.
BALCONY: 46 sq. ft. PORCH: 164 sq. ft.
TOTAL: 3640 sq. ft.
SIZES AND DIMENSIONS ARE APPROXIMATE, ACTUAL MAY VARY.

Disclaimer: Sizes and Dimensions are Approximate, Actual May Vary.

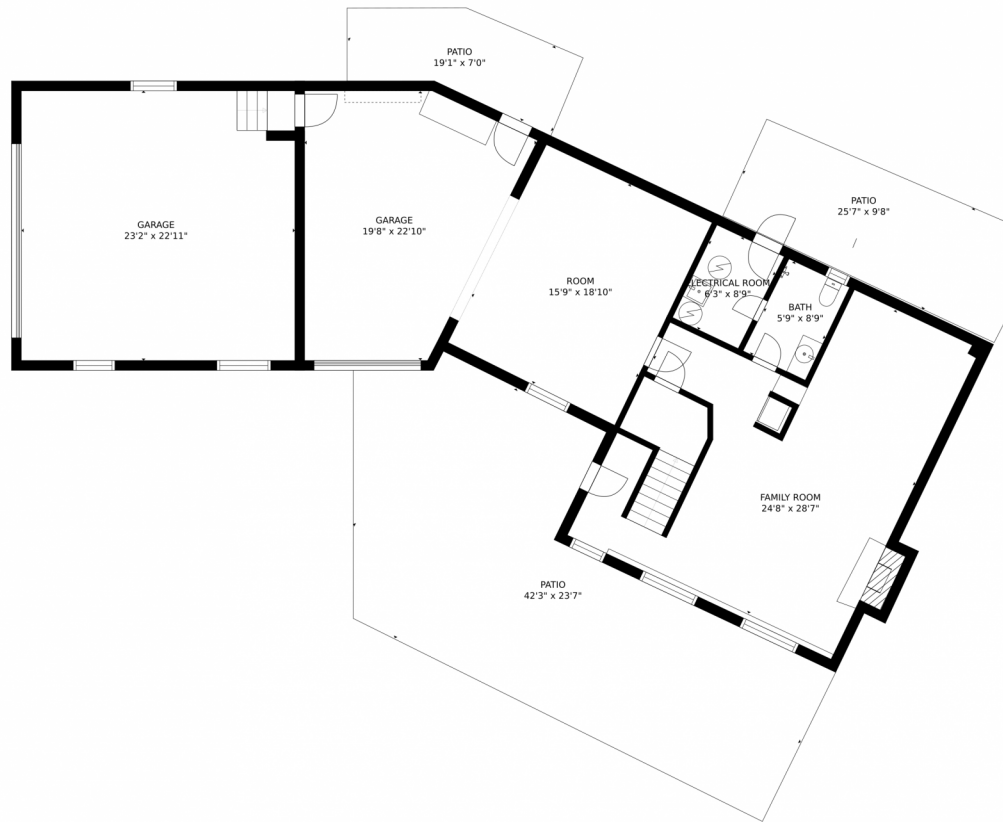


Tom Roy
303-829-2735
tom@tomroy.com
<https://www.therealtywerks.com/>



Scan code
for more
property
details

25458 Red Cloud Drive, Conifer, CO 80433 – Lower Level



GROSS INTERNAL AREA
FLOOR 1: 1035 sq. ft. FLOOR 2: 2056 sq. ft.
FLOOR 3: 549 sq. ft. EXCLUDED AREAS:
PATIO: 2203 sq. ft. GARAGE: 875 sq. ft.
BALCONY: 46 sq. ft. PORCH: 164 sq. ft.
TOTAL: 3640 sq. ft.
SIZES AND DIMENSIONS ARE APPROXIMATE, ACTUAL MAY VARY.

Disclaimer: Sizes and Dimensions are Approximate, Actual May Vary.



Tom Roy
303-829-2735
tom@tomroy.com
<https://www.therealtywerks.com/>



25458 Red Cloud Drive, Conifer, CO 80433 – All Levels



GROSS INTERNAL AREA
FLOOR 1: 1035 sq. ft. FLOOR 2: 2056 sq. ft.
FLOOR 3: 549 sq. ft. EXCLUDED AREAS:
PATIO: 2203 sq. ft. GARAGE: 875 sq. ft.
BALCONY: 46 sq. ft. PORCH: 164 sq. ft.
TOTAL: 3640 sq. ft.
SIZES AND DIMENSIONS ARE APPROXIMATE, ACTUAL MAY VARY.

Disclaimer: Sizes and Dimensions are Approximate, Actual May Vary.



Tom Roy
303-829-2735
tom@tomroy.com
<https://www.therealtywerks.com/>



Scan code
for more
property
details