



 Single Family

 1995 SQFT

 3 Beds

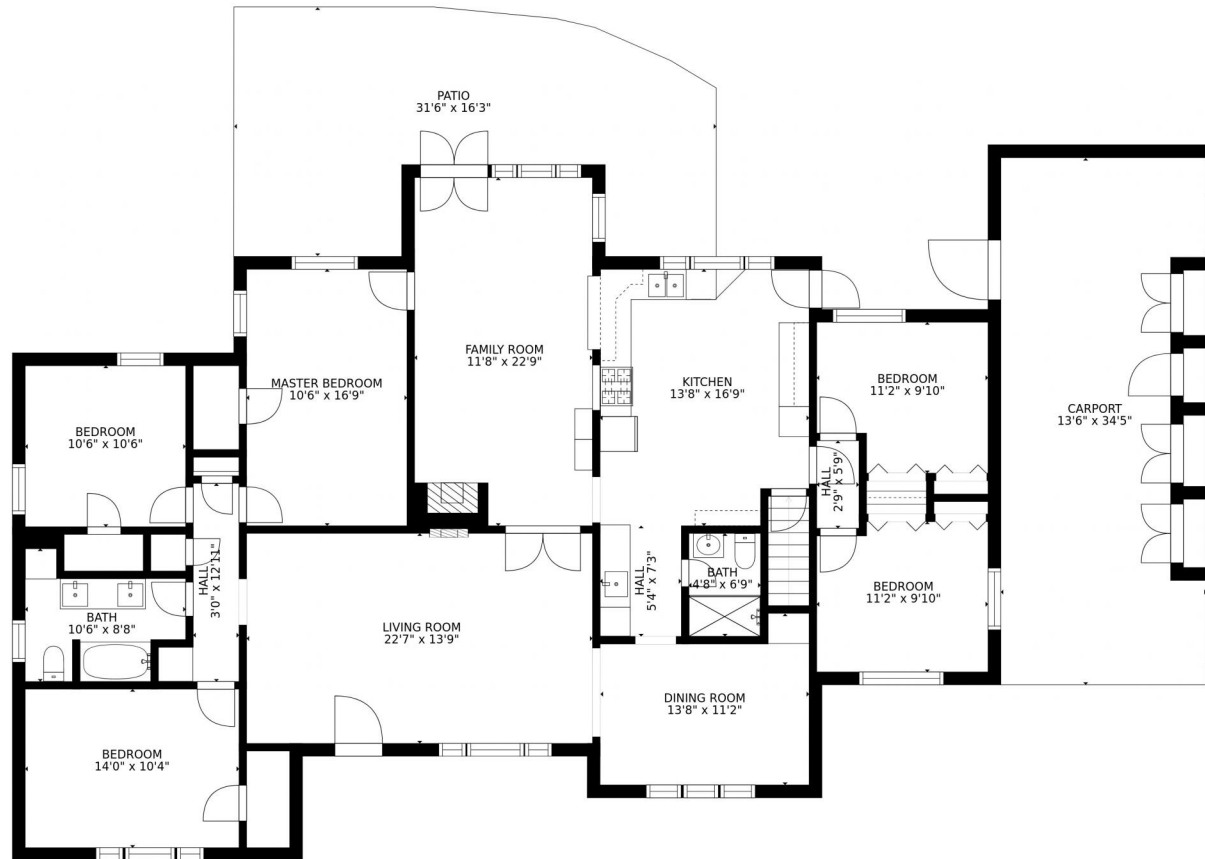
 2 Baths



**Taylor Haas**  
303-665-7368  
taylorh@coloradorpm.com  
<https://www.coloradorpm.com/available-rental-properties-denver>



# 3330 Kendall Street, Wheat Ridge, CO 80033 – Main Level



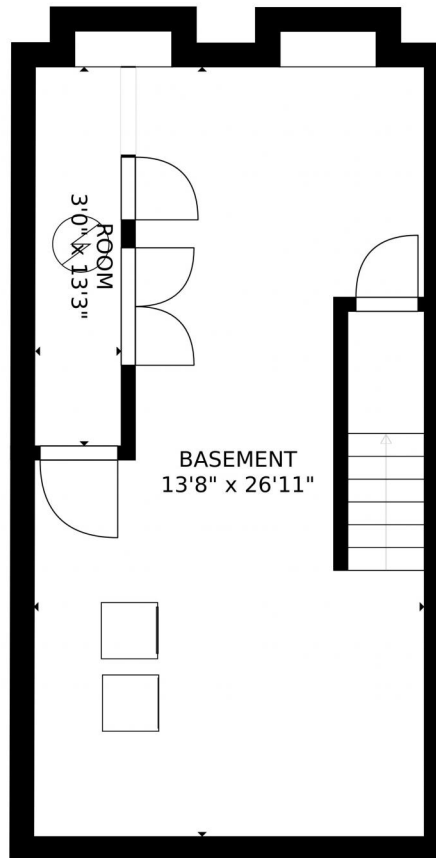
GROSS INTERNAL AREA  
FLOOR 1: 376 sq. ft, FLOOR 2: 2014 sq. ft  
EXCLUDED AREAS: , PATIO: 403 sq. ft  
TOTAL: 2389 sq. ft  
SIZES AND DIMENSIONS ARE APPROXIMATE, ACTUAL MAY VARY.

Disclaimer: Sizes and Dimensions are Approximate, Actual May Vary.



**Taylor Haas**  
303-665-7368  
taylorh@coloradorpm.com  
<https://www.coloradorpm.com/available-rental-properties-denver>





GROSS INTERNAL AREA  
FLOOR 1: 376 sq. ft, FLOOR 2: 2014 sq. ft  
EXCLUDED AREAS: , PATIO: 403 sq. ft  
TOTAL: 2389 sq. ft  
SIZES AND DIMENSIONS ARE APPROXIMATE, ACTUAL MAY VARY.

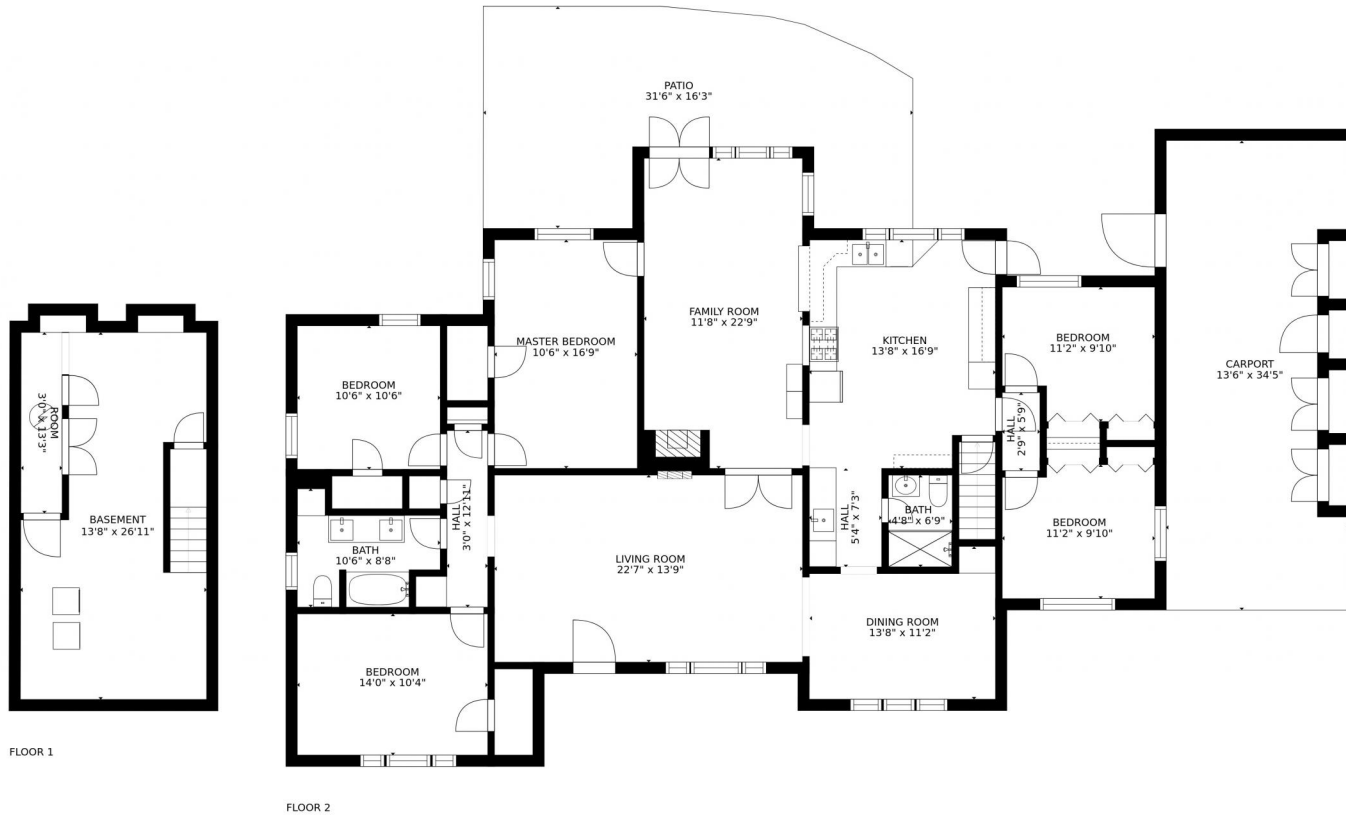
Disclaimer: Sizes and Dimensions are Approximate, Actual May Vary.



**Taylor Haas**  
303-665-7368  
taylorh@coloradorpm.com  
<https://www.coloradorpm.com/available-rental-properties-denver>



# 3330 Kendall Street, Wheat Ridge, CO 80033 – All Levels



GROSS INTERNAL AREA  
FLOOR 1: 376 sq. ft, FLOOR 2: 2014 sq. ft  
EXCLUDED AREAS: , PATIO: 403 sq. ft  
TOTAL: 2389 sq. ft  
SIZES AND DIMENSIONS ARE APPROXIMATE, ACTUAL MAY VARY.

Disclaimer: Sizes and Dimensions are Approximate, Actual May Vary.



**Taylor Haas**  
303-665-7368  
taylorh@coloradorpm.com  
<https://www.coloradorpm.com/available-rental-properties-denver>



Scan code  
for more  
property  
details